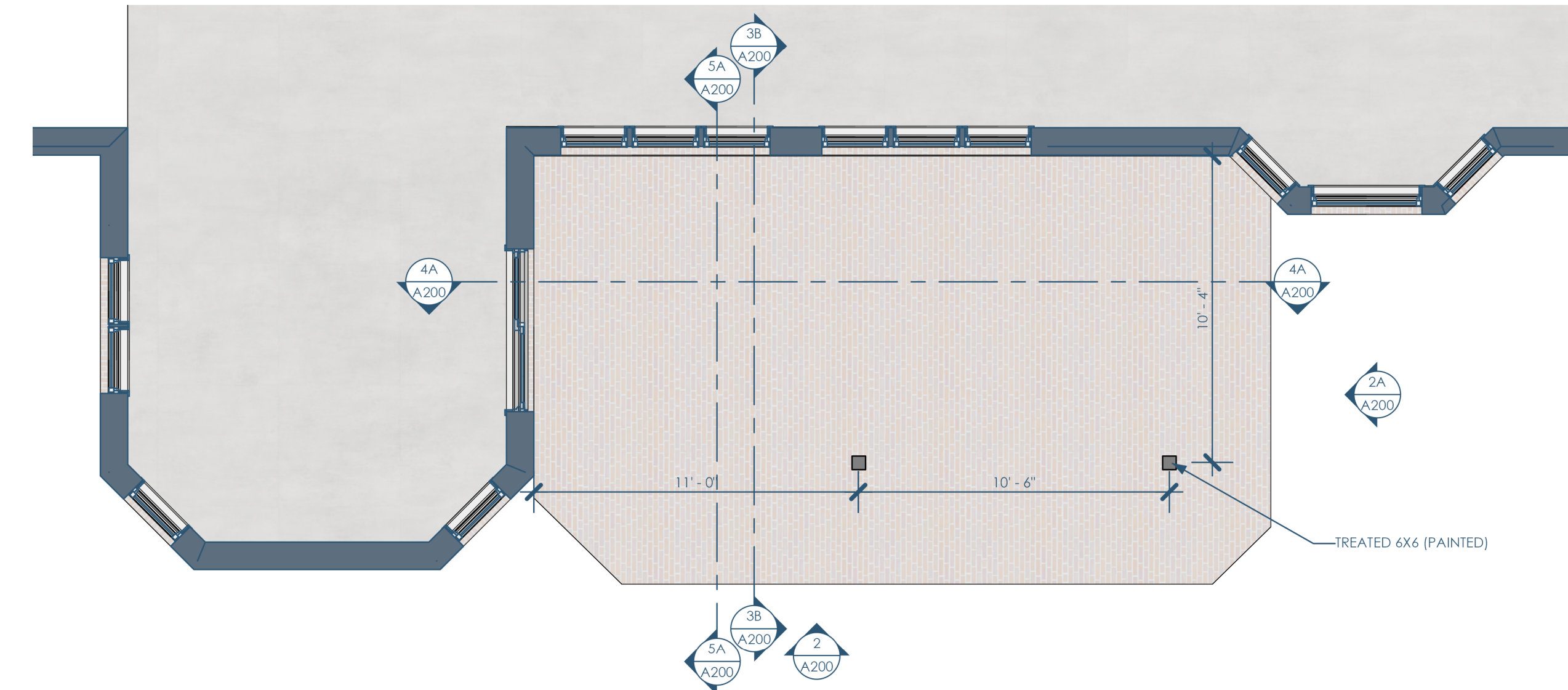


5C/A100 FLOOR PLAN - 1ST FLOOR
1/4"=1'-0"

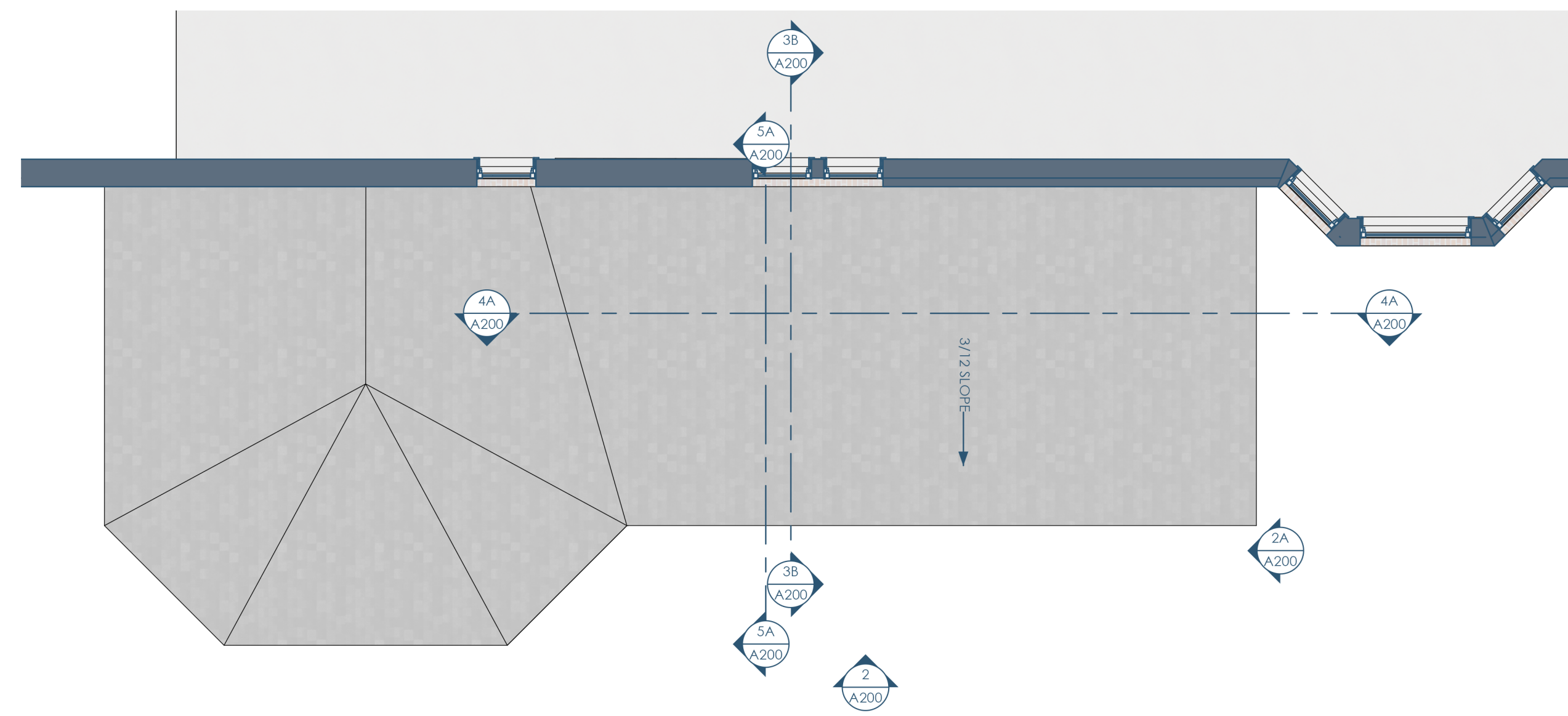
proposing to use
4x4's, between
screens

will be screens only

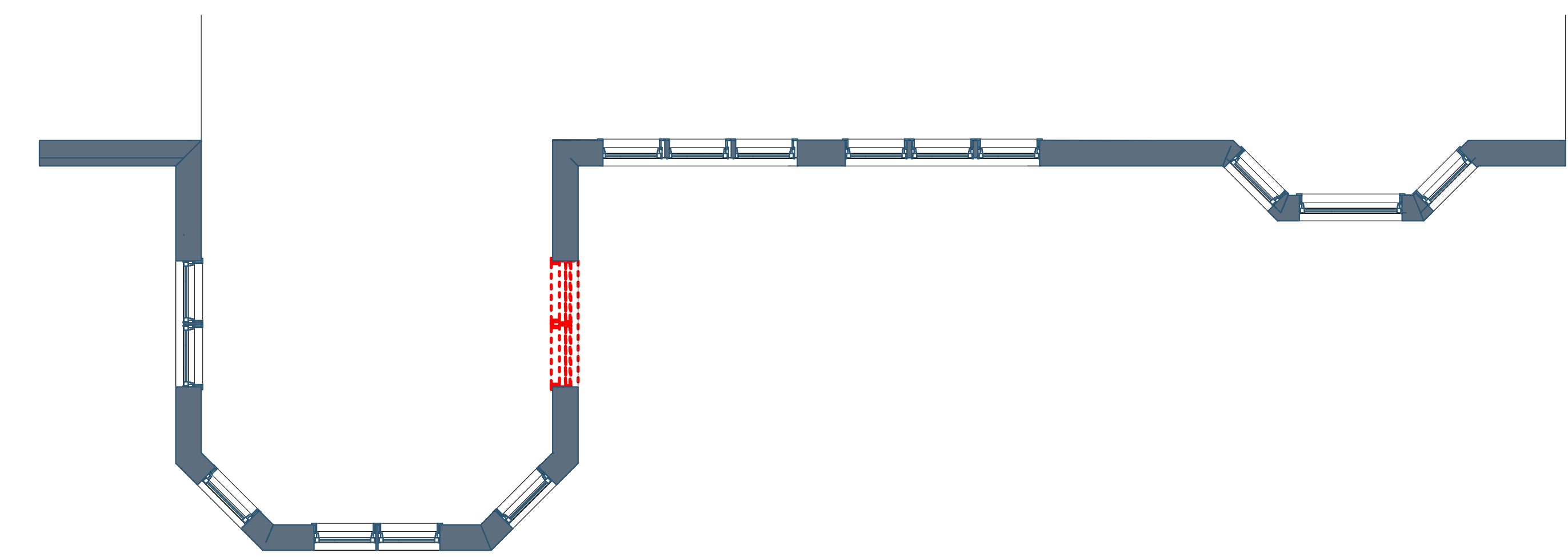


3C/A100 FLOOR PLAN - BASEMENT
1/4"=1'-0"

TREATED 6X6 (PAINTED)



5A/A100 FLOOR PLAN - ROOF
1/4"=1'-0"



3A/A100 DEMO PLAN
1/4"=1'-0"



Architect: Opening Design
17 S Fairchild | FL 7
Madison, WI 53703
ryan@openingdesign.com | 773.425.6456

GC: Lake Country Construction Group
161 Horizon Dr
Verona, WI 53593
608.845.1398

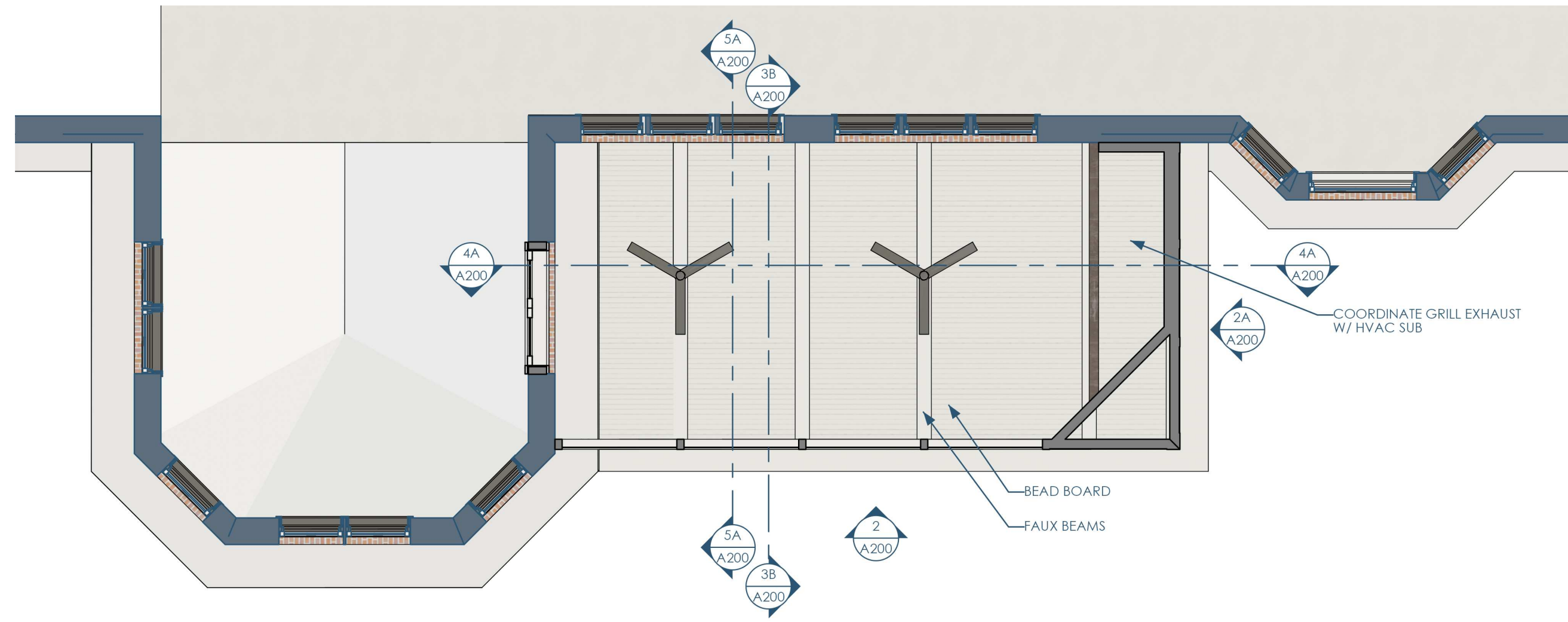
FLOOR PLANS
HERNAN 3 SEASON PORCH
VERONA, WI

A100

This project, like most Opening Design's projects, is open source (Attribution-ShareAlike 4.0 International=CC-BY-SA 4.0) - freely available to any party for future use, assuming the terms such as Attribution and ShareAlike are honored.

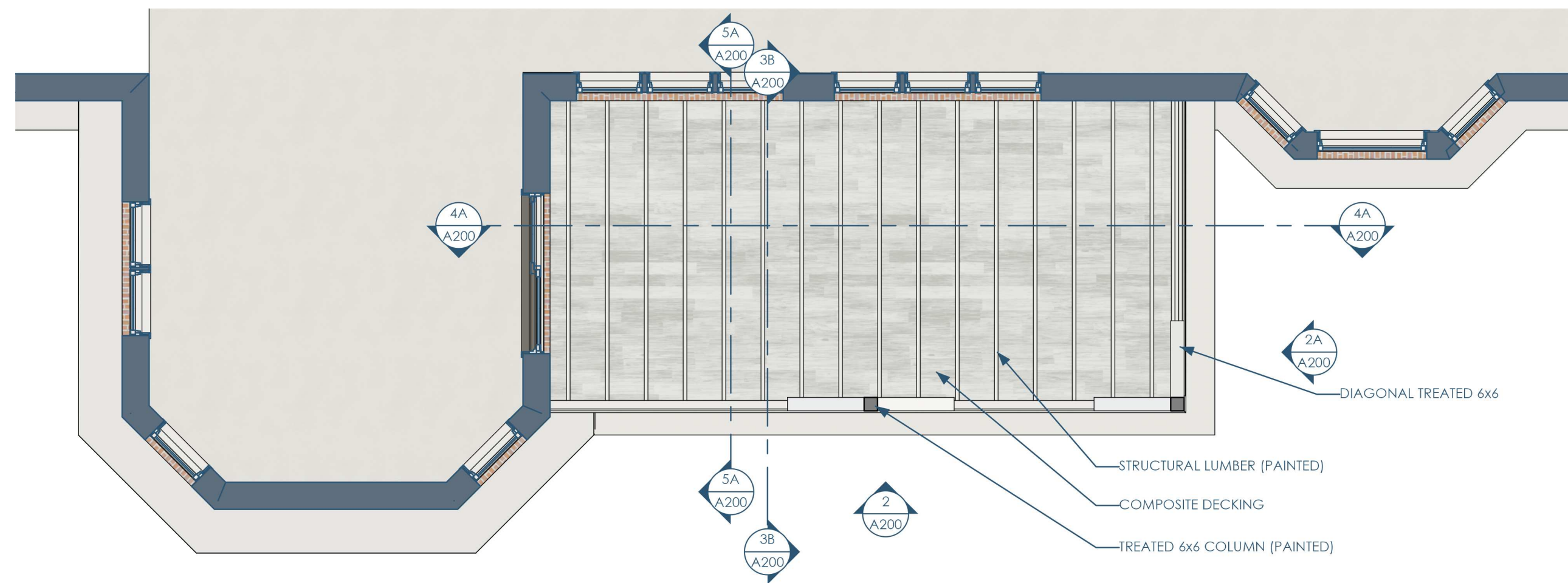
5 4 3 2 1

C



5C/A150 RCP - 1ST FLOOR
1/4"=1'-0"

B



5B/A150 RCP - BASEMENT
1/4"=1'-0"

A



Architect: OpeningDesign
17 S Fairchild | FL 7
Madison, WI 53703
ryan@openingdesign.com | 773.425.6456

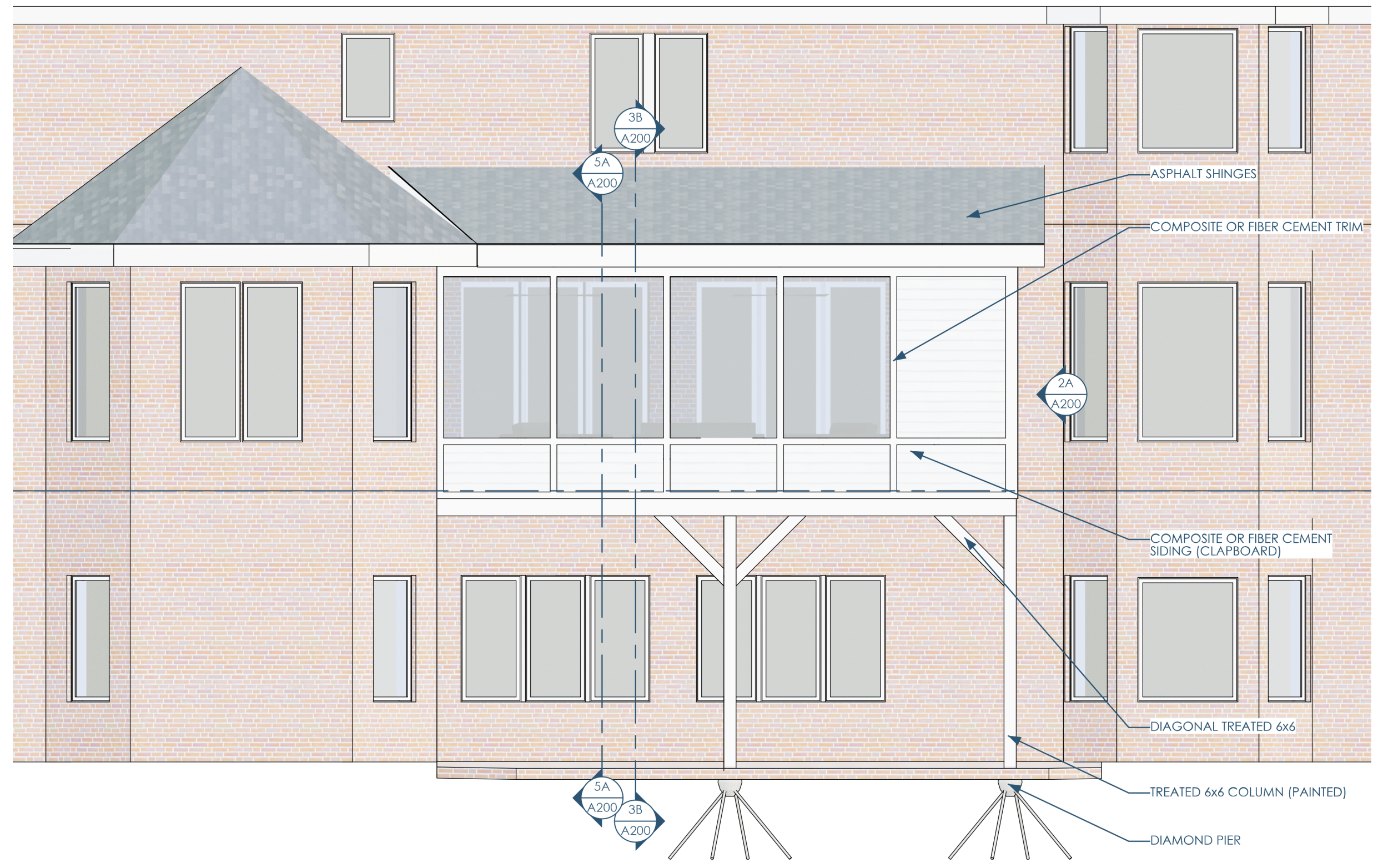
GC: Lake Country Construction Group
161 Horizon Dr
Verona, WI 53593
608.845.1398

REFLECTED CEILING PLANS
HERNAN 3 SEASON PORCH
VERONA, WI

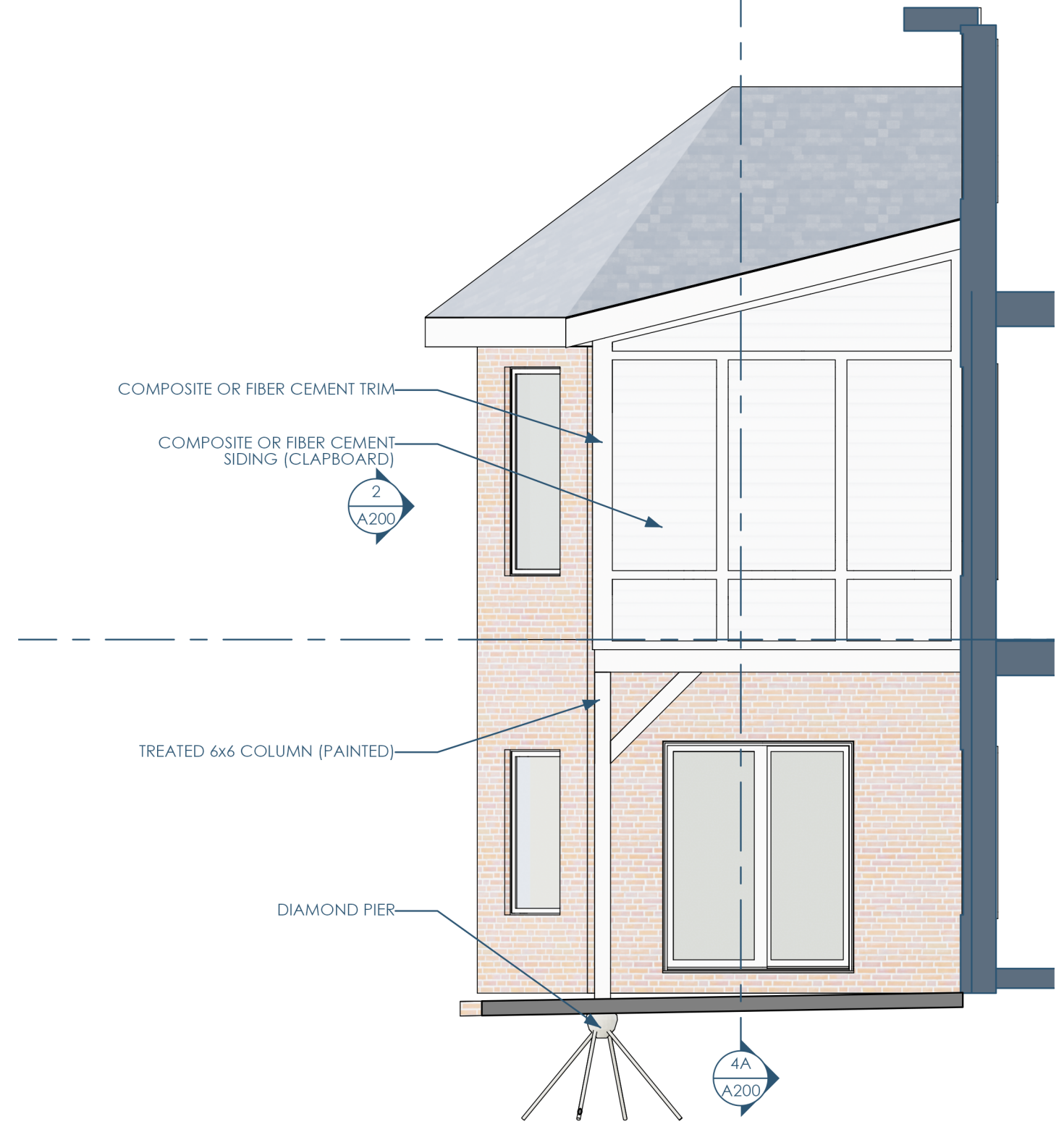
A150

5 4 3 2 1

This project, like most OpeningDesign's projects, is open source (Attribution-ShareAlike 4.0 International=CC BY-SA 4.0) - freely available to any party for future use, assuming the terms such as Attribution and ShareAlike are honored.

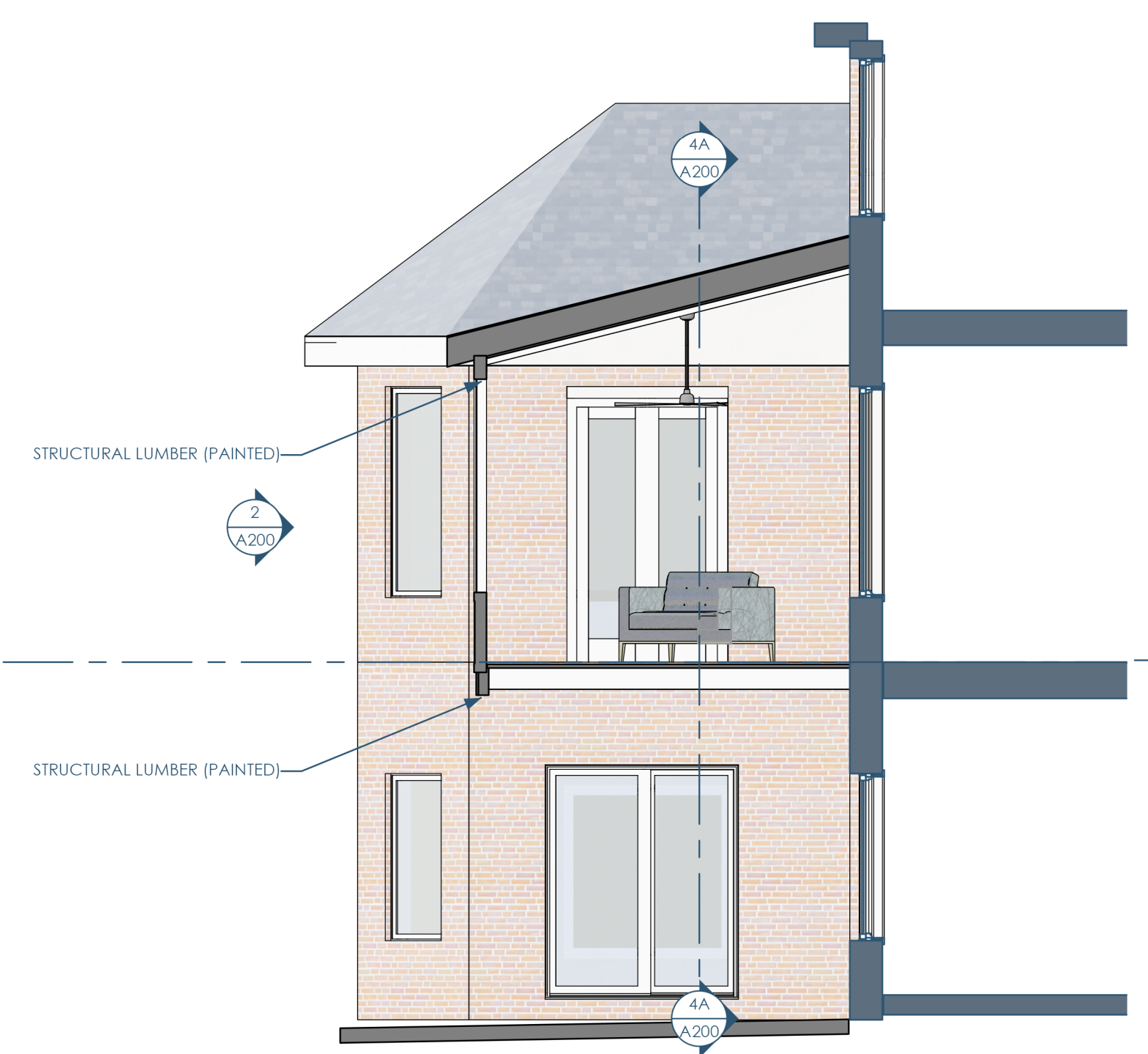


2/A200 ELEVATION - NORTH
1/4"=1'-0"

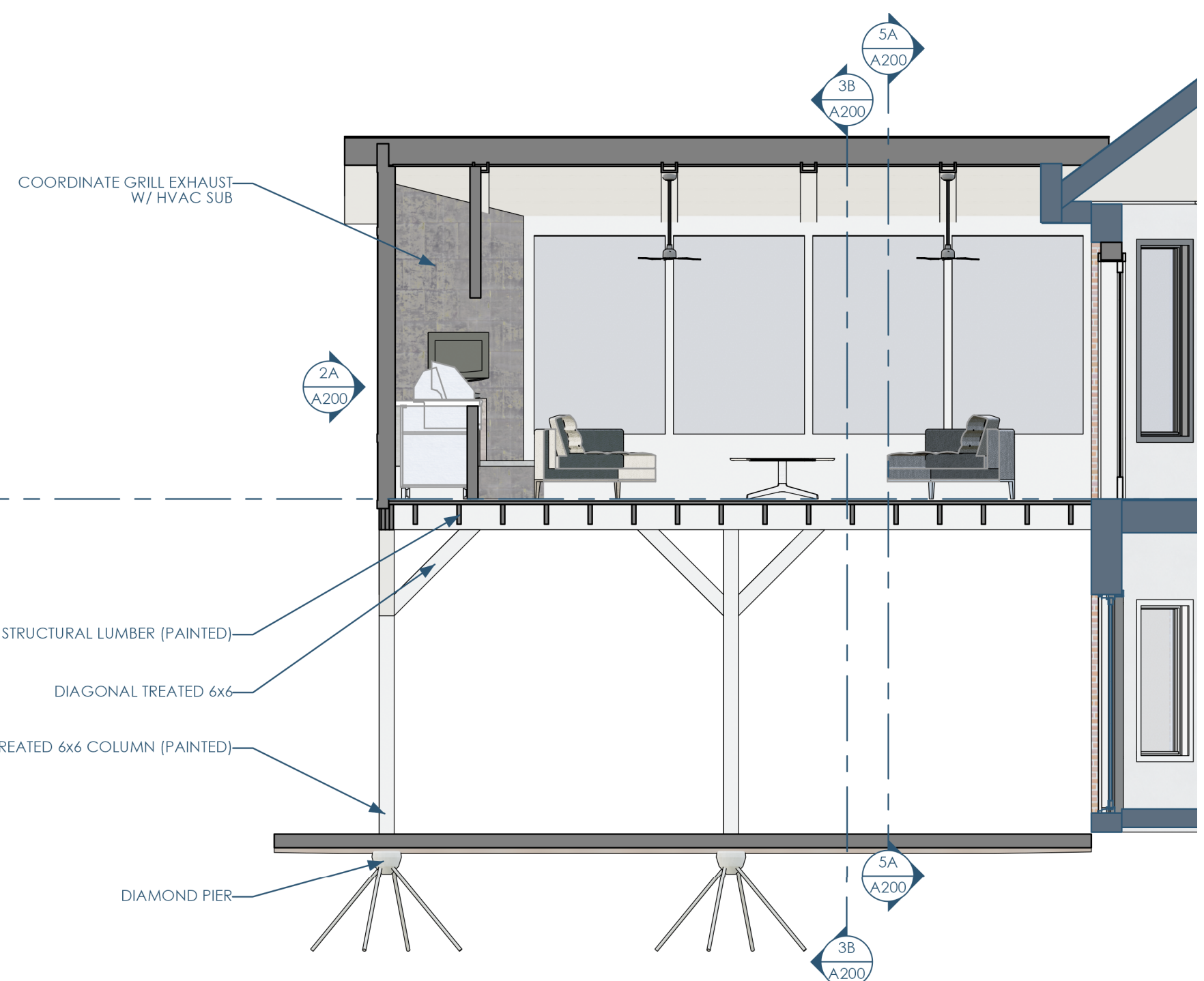


2A/A200 ELEVATION - EAST
1/4"=1'-0"

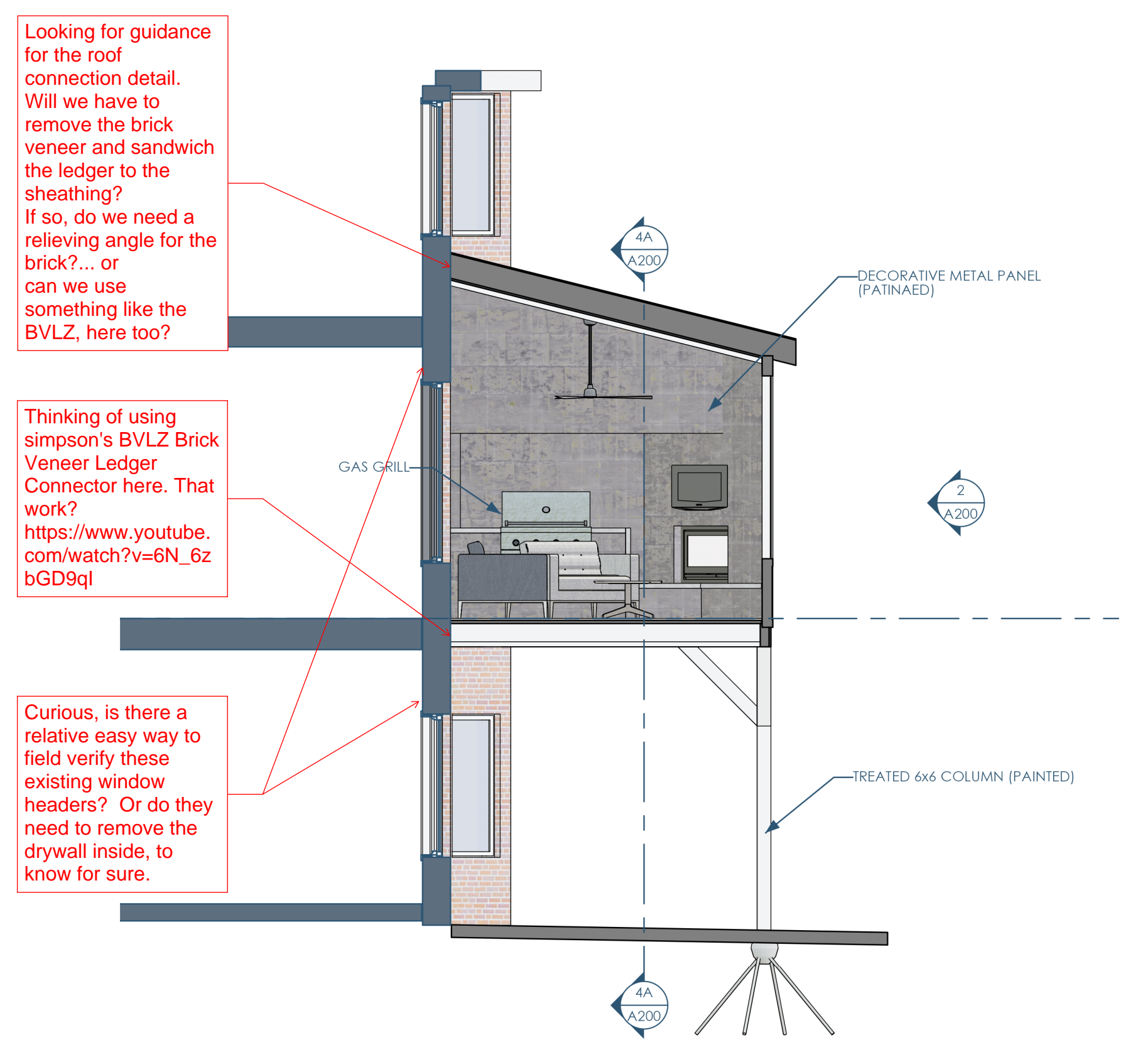
In general need guidance on overall lateral stability of the proposed design.



5A/A200 SECTION - EAST-WEST - LOOKING SOUTH
1/4"=1'-0"



4A/A200 SECTION - NORTH-SOUTH - LOOKING EAST
1/4"=1'-0"



3B/A200 SECTION - EAST-WEST - LOOKING NORTH
1/4"=1'-0"

Looking for guidance for the roof connection detail. Will we have to remove the brick veneer and sandwich the ledger to the sheathing? If so, do we need a relieving angle for the brick?... or can we use something like the BVLZ, here too?

Thinking of using simpson's BVLZ Brick Veneer Ledger Connector here. That work? https://www.youtube.com/watch?v=6N_6z_bGD9qI

Curious, is there a relative easy way to field verify these existing window headers? Or do they need to remove the drywall inside, to know for sure.



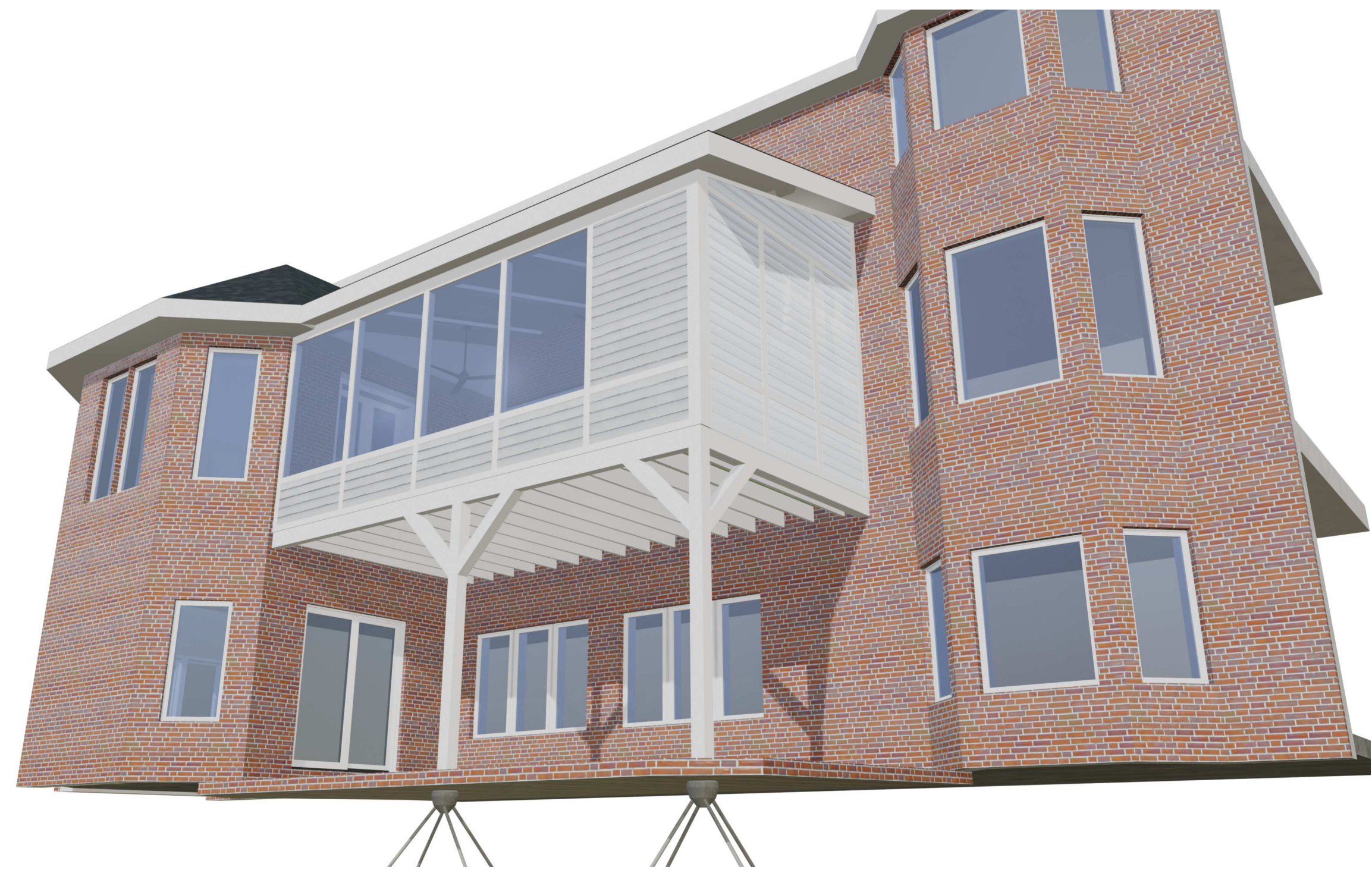
Architect: Opening Design
17 S Fairchild | FL7
Madison, WI 53703
ryan@openingdesign.com | 773.425.6456

GC: Lake Country Construction Group
161 Horizon Dr
Verona, WI 53593
608.845.1398

ELEVATIONS AND SECTIONS
HERNAN 3 SEASON PORCH
VERONA, WI

A200

This project, like most Opening Design's projects, is open source. (Attribution-ShareAlike 4.0 International-CC-BY-SA 4.0)-freely available to any party for future use, assuming the terms such as Attribution and ShareAlike are honored.



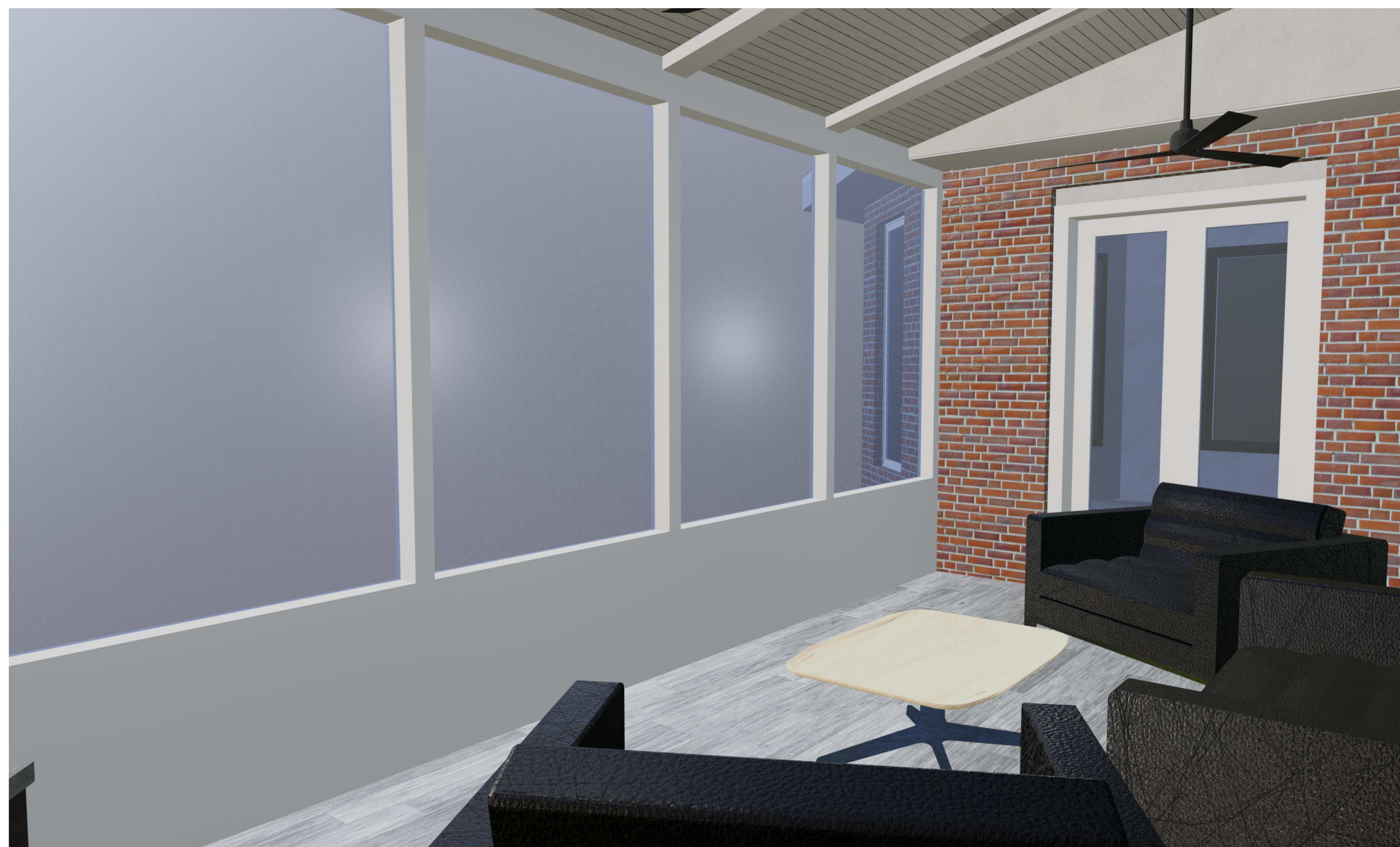
5B/A900 PERSPECTIVE 1
1/4"=1'-0"



3B/A900 PERSPECTIVE 2
1/4"=1'-0"



5A/A900 PERSPECTIVE 3
1/4"=1'-0"



3A/A900 PERSPECTIVE 4
1/4"=1'-0"

