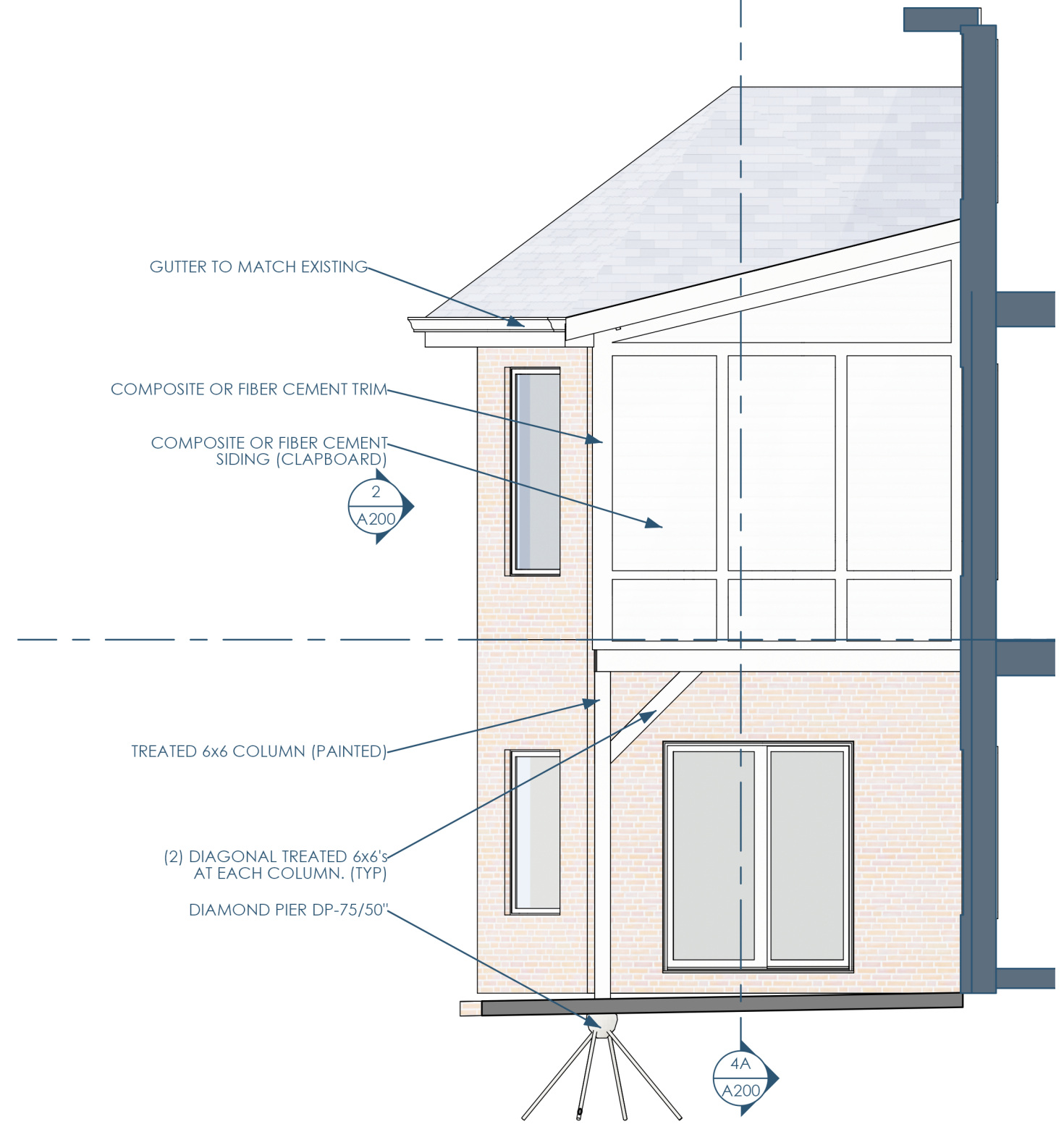
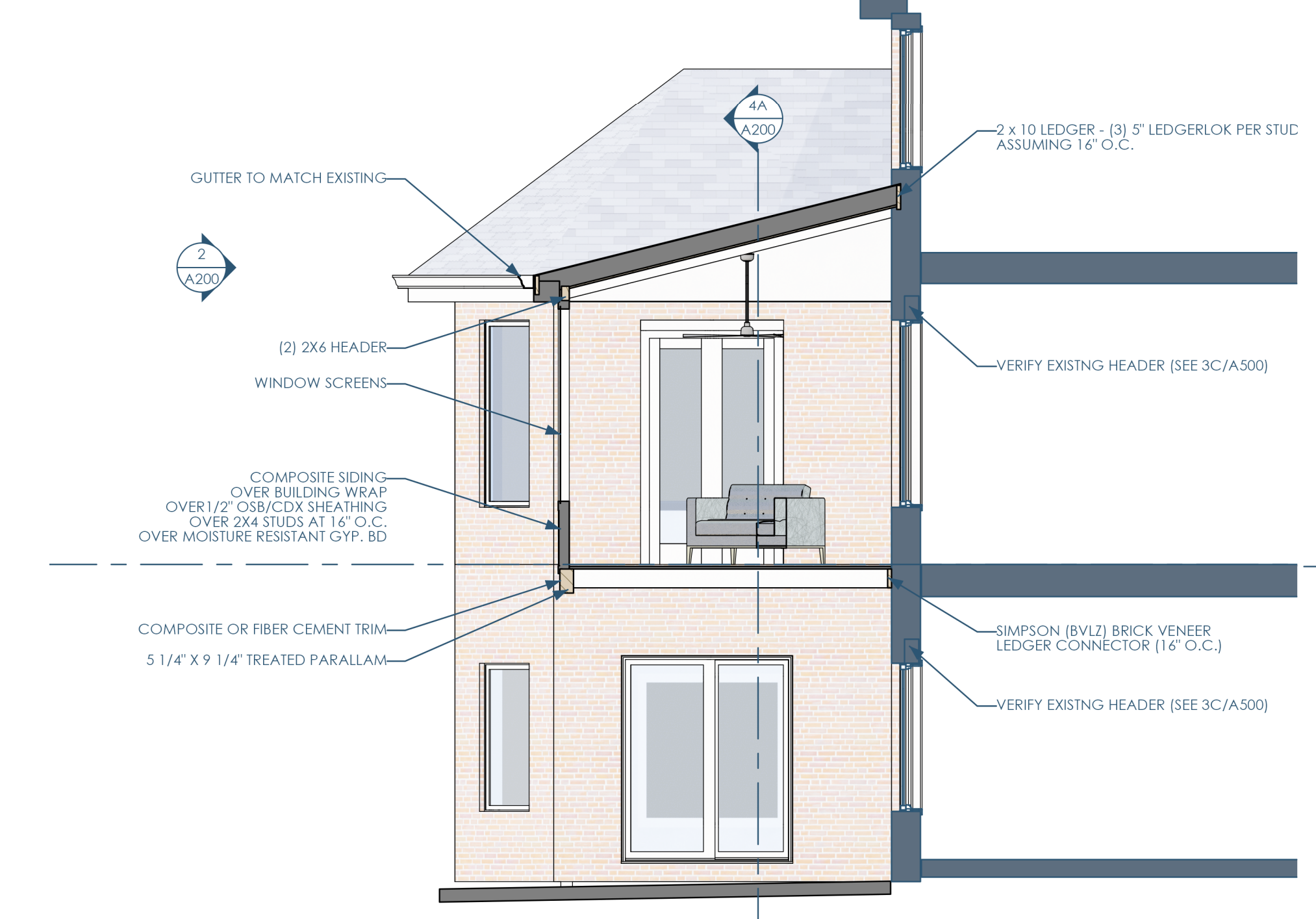


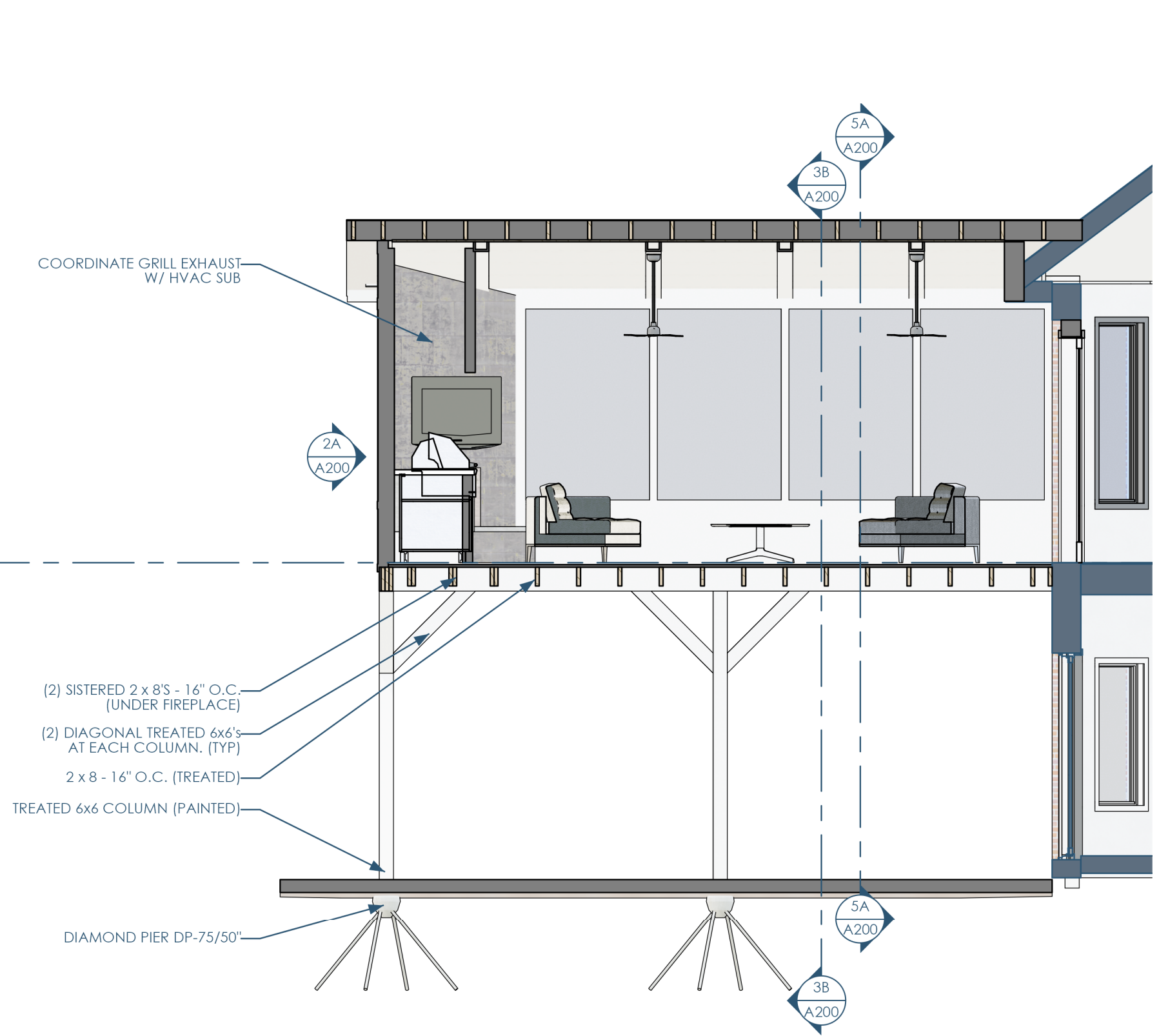
2/A200 ELEVATION - NORTH  
1/4"=1'-0"



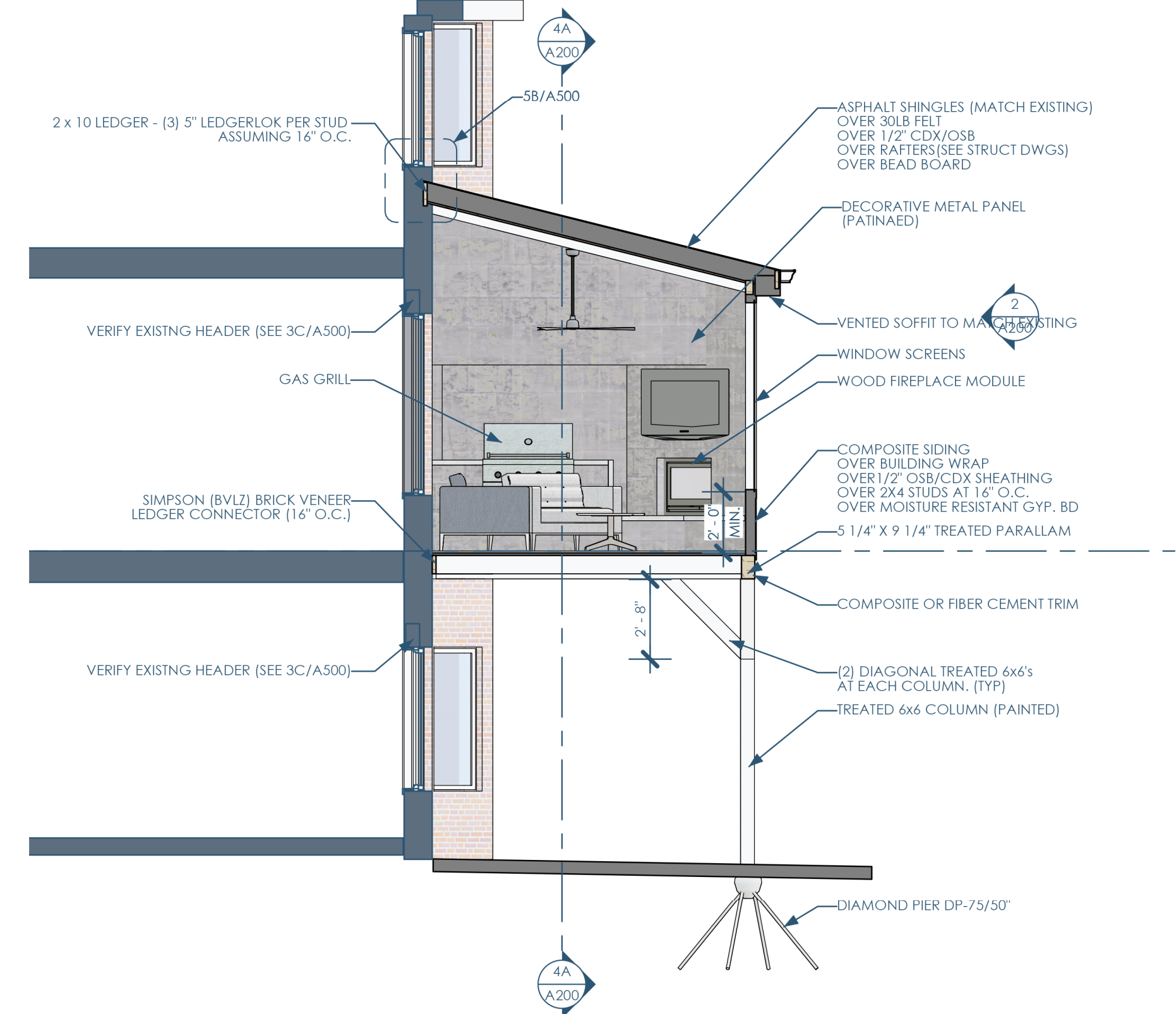
2A/A200 ELEVATION - EAST  
1/4"=1'-0"



5A/A200 SECTION - EAST-WEST - LOOKING SOUTH  
1/4"=1'-0"



4A/A200 SECTION - NORTH-SOUTH - LOOKING EAST  
1/4"=1'-0"



3B/A200 SECTION - EAST-WEST - LOOKING NORTH  
1/4"=1'-0"