

Walcro  
 Retail to Warehouse  
 1940 Fernbrook Lane N, STE C  
 Plymouth, MN 55447

APPROVED: \_\_\_\_\_ DATE: \_\_\_\_\_  
 REQUESTED DATE OF INSTALLATION: \_\_\_\_\_

**SUBMITTAL REVIEW**

This review is for general conformance with the Design concept.  
 The Subcontractor remains responsible for:


- A. Compliance with the contract documents.
- B. Confirming and correlating quantities and dimensions.
- C. Selecting fabrication processes and techniques of construction.
- D. Coordination of this work with other trades.
- E. Performing this work in a safe and satisfactory manner.
- F. Compliance with the Contractor's construction schedule.
- G. All other provisions of the agreements.

It is understood that the General Contractor's notation on the submittal is not to be construed as an authorization for additional work or additional cost.

NO EXCEPTIONS       EXCEPTIONS AS NOTED  
 RESUBMIT             REJECTED (SEE REMARKS)

DATE: 10/2/23  
 BY: Matt Sever  
 PROJECT #: 90055-23  
 PROJECT NAME: Walcro - Plymouth

5151 Edina Industrial Blvd.  
 Suite 650  
 Edina, MN 55439  
 P 952-748-5338  
 F 952-224-5452

 **Sever Construction Company**

**BILL OF MATERIALS**

QUANTITY	UNIT	ITEM
1	EACH	NABCO - Gyro Tech 1175 - Surface Applied Automatic Bi-Part Sliding Door. Full Break Out (P-SX-SX-P). Clear Anodized Finish. Standard Unit Width Package (14' W). Standard Unit Height Package (7'-7.5" H). Narrow Stile (2-1/8"). Standard Muntin Bar (2"). Standard MS Thumbturn Locking. Prep for 1/4" Glazing.

**INCLUDED:**  
 Complete installation of the above equipment. Final hook up. Adjustment for proper operation.

**WORK NOT INCLUDED BY TEE JAY NORTH:**  
 Electrician to run 120V to units. Low-voltage wiring ran to activation devices. Structural support. Rough openings. Glass & glazing. Caulking.

**Tee Jay North, Inc.**

21475 Heath Avenue South, Post Office Box 1089  
 Lakeville, MN 55044-1089 (952) 469-5080  
 PROVIDING QUALITY SERVICE

> Swing Door Operators > Sliding Doors > Bi-Folding Doors > Security Revolving Doors	> Manual Revolving Doors > Automatic Door Service > Manual Door Service > Industrial Applications
---	--

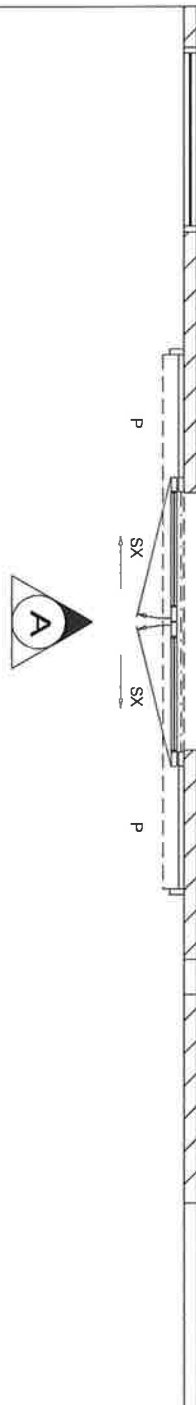
JOB NAME	JOB PURCHASER
Walcro Retail to Warehouse 1940 Fernbrook Lane N, STE C Plymouth, MN 55447	Sever Construction Company 4600 W. 77th Street Ste 275 Edina, MN 55435

DATE DRAWN	09-29-2023	DRAWN BY	ES	CHECKED BY	CHK BY
REV. DATE		DESCRIPTION			
CONTRACT #	85703	DRAWING #	17326	SHEET	1 OF 4

5151 Edina Industrial Blvd. #650

WAREHOUSE  
104

RETAIL  
101



NOTE:  
SLIDING UNIT TO BE  
FURNISHED IN A CLEAR  
ANODIZED ALUMINUM FINISH.

NOTE:  
STRUCTURAL SUPPORT FOR SLIDER(S)  
BY OTHERS. SEE DETAIL #1 & 2  
FOR REQUIREMENTS.

### DOOR LAYOUT PLAN

#### SLIDING DOOR NOMENCLATURE

- X - SLIDING PANEL
- O - FIXED SIDELITE
- SX - SLIDE/SWING PANEL
- SO - SWING OUT SIDELITE
- P - SIDELITE ELIMINATED
- SP - SWING POCKET PANEL

SECTION NUMBER

#

SHEET NUMBER

#



**Tee Jay North, Inc.**

21475 Heath Avenue South, Post Office Box 1089  
Lakeville, MN 55044-1089 (952) 469-5080



#### JOB NAME

Walcro  
Retail to Warehouse  
1940 Fernbrook Lane N, STE C  
Plymouth, MN 55447

#### JOB PURCHASER

Sever Construction Company  
4600 W. 77th Street Ste 275  
Edina, MN 55435

DATE DRAWN 09-29-2023

DRAWN BY ES

CHECKED BY

REV. DATE

DESCRIPTION

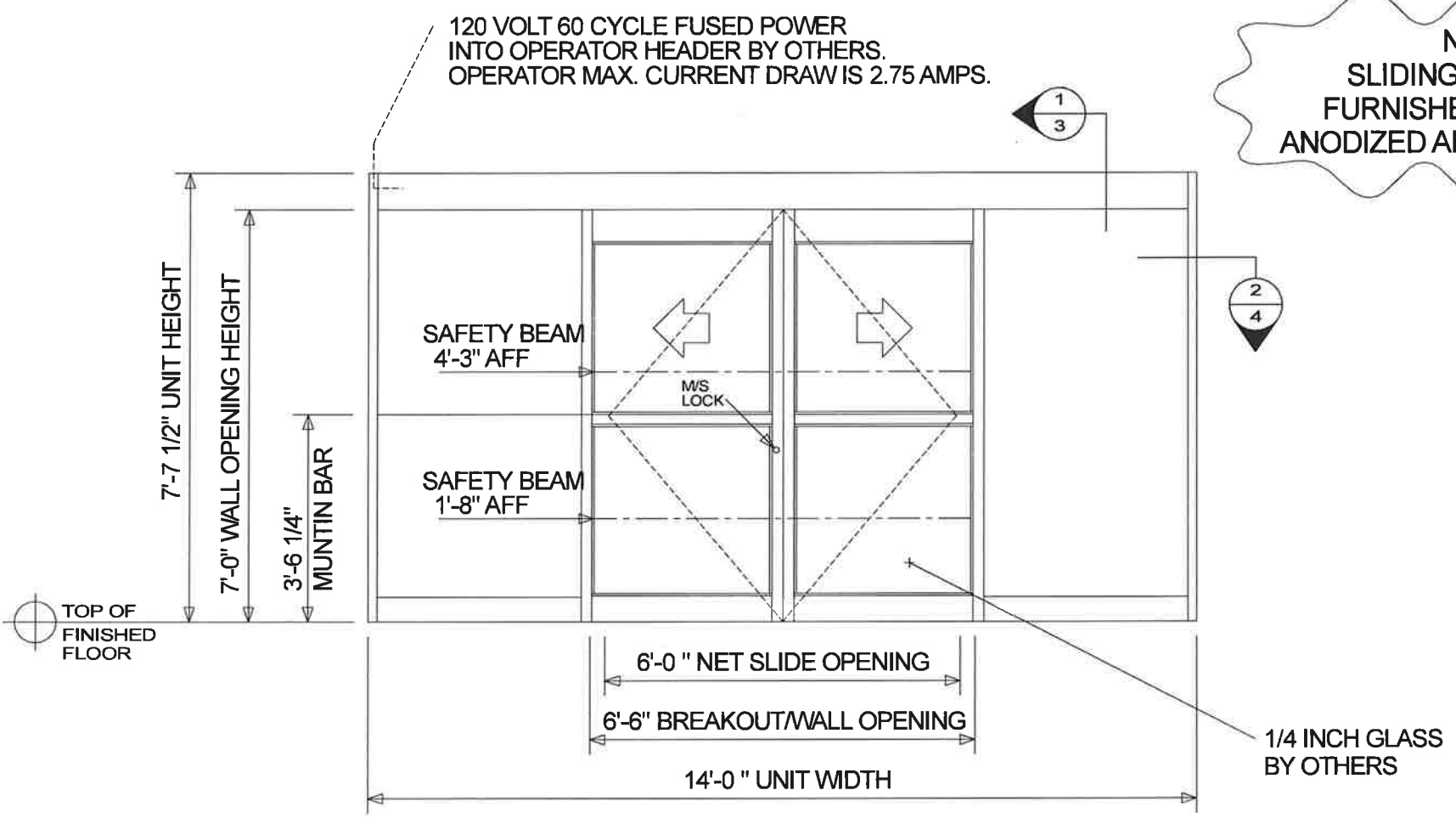
CHK BY

CONTRACT # 85703

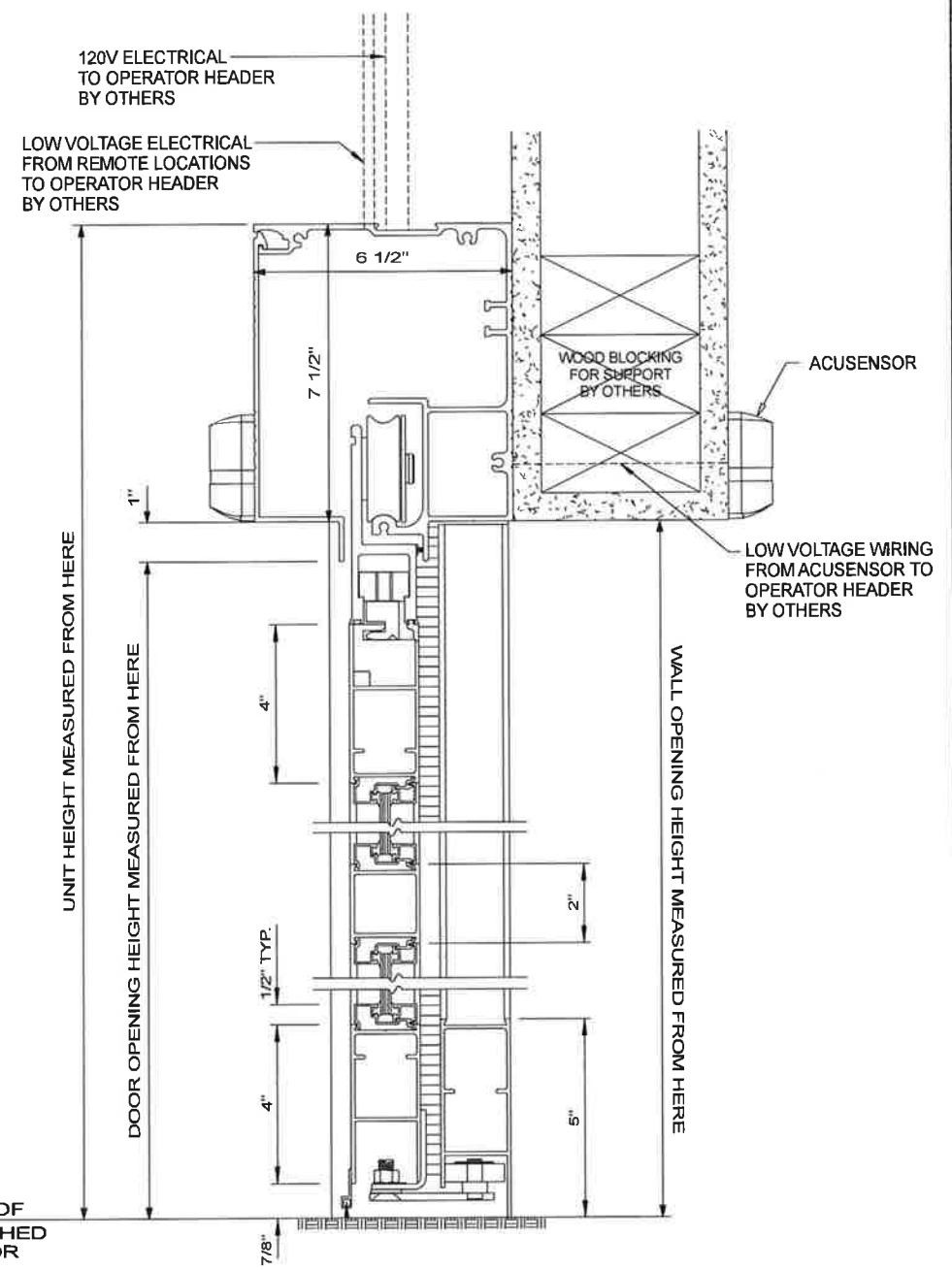
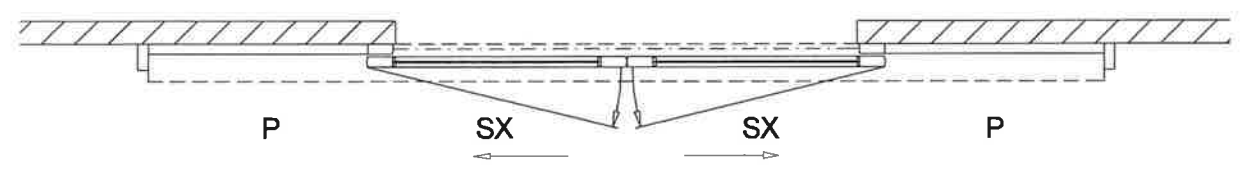
DRAWING # 17326

SHEET 2 OF 4

**NOTE:**  
SLIDING UNIT TO BE  
FURNISHED IN A CLEAR  
ANODIZED ALUMINUM FINISH.



**ELEVATION A**  
**1 THUS**



**VERTICAL SECTION 1**

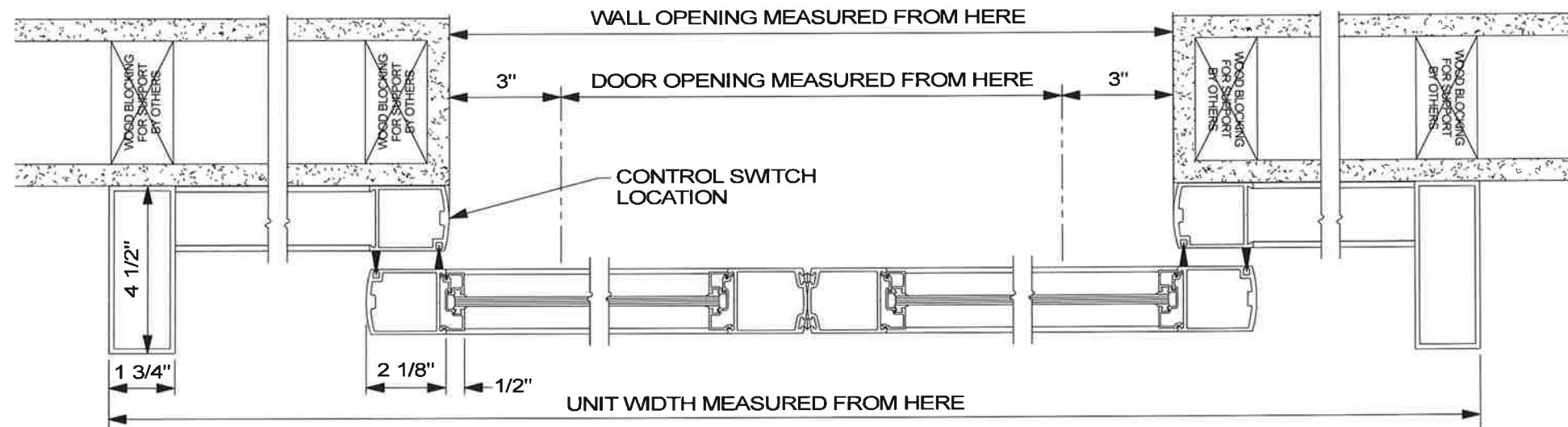
NOTE: SECTION IS TAKEN THROUGH THE DOOR  
OPENING WITH DOORS SHOWN IN THE  
FULL OPEN POSITION.

**Tee Jay North, Inc.**  
21475 Heath Avenue South, Post Office Box 1089  
Lakeville, MN 55044-1089 (952) 469-5080

**JOB NAME**  
Walcro  
Retail to Warehouse  
1940 Fernbrook Lane N, STE C  
Plymouth, MN 55447

**JOB PURCHASER**  
Sever Construction Company  
4600 W. 77th Street Ste 275  
Edina, MN 55435

DATE DRAWN	09-29-2023	DRAWN BY	ES	CHECKED BY	
REV. DATE		DESCRIPTION		CHK BY	
CONTRACT #	85703	DRAWING #	17326	SHEET	3 OF 4



HORIZONTAL SECTION ②

NOTE:  
SLIDING UNIT TO BE  
FURNISHED IN A CLEAR  
ANODIZED ALUMINUM FINISH.

**Tee Jay North, Inc.**  
21475 Heath Avenue South, Post Office Box 1089  
Lakeville, MN 55044-1089 (952) 469-5080

**JOB NAME**  
Walcro  
Retail to Warehouse  
1940 Fernbrook Lane N, STE C  
Plymouth, MN 55447

**JOB PURCHASER**  
Sever Construction Company  
4600 W. 77th Street Ste 275  
Edina, MN 55435

DATE DRAWN	09-29-2023	DRAWN BY	ES	CHECKED BY	
REV. DATE		DESCRIPTION		CHK BY	
CONTRACT #	85703	DRAWING #	17326	SHEET	4 OF 4