

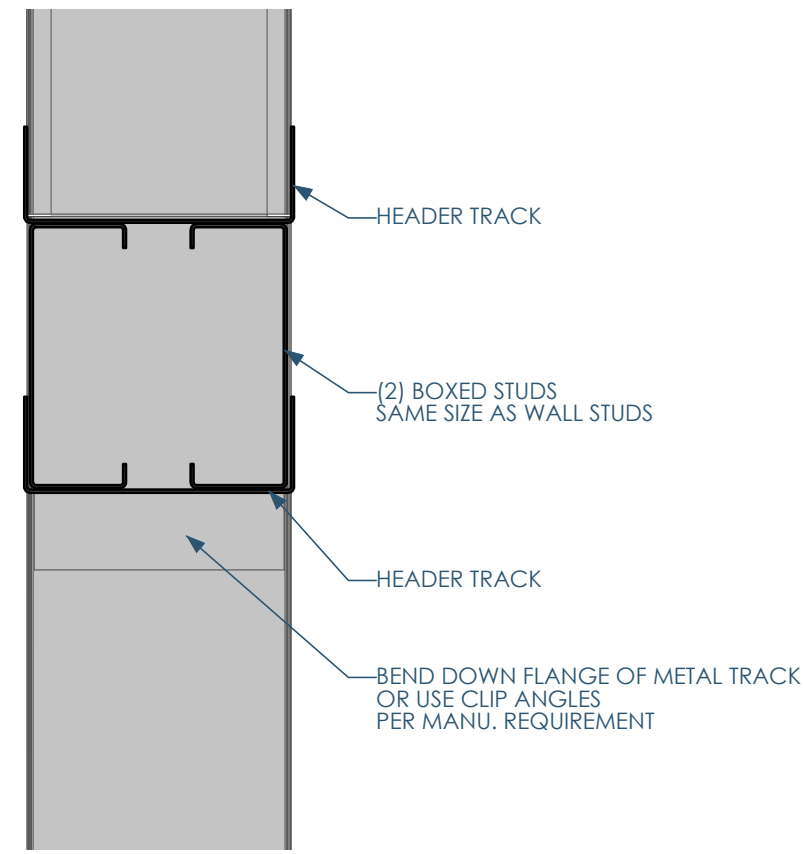
5

4

3

2

1

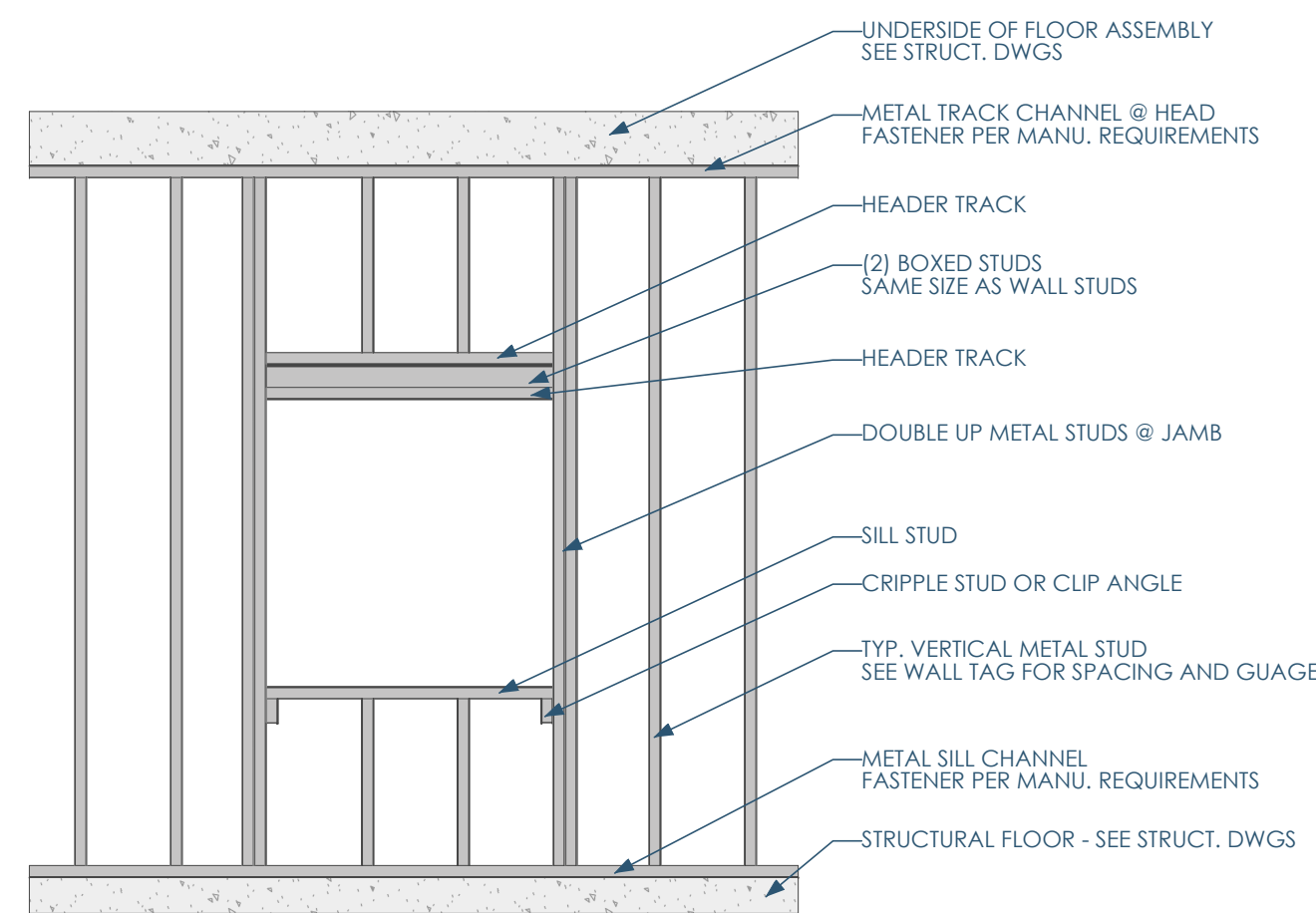
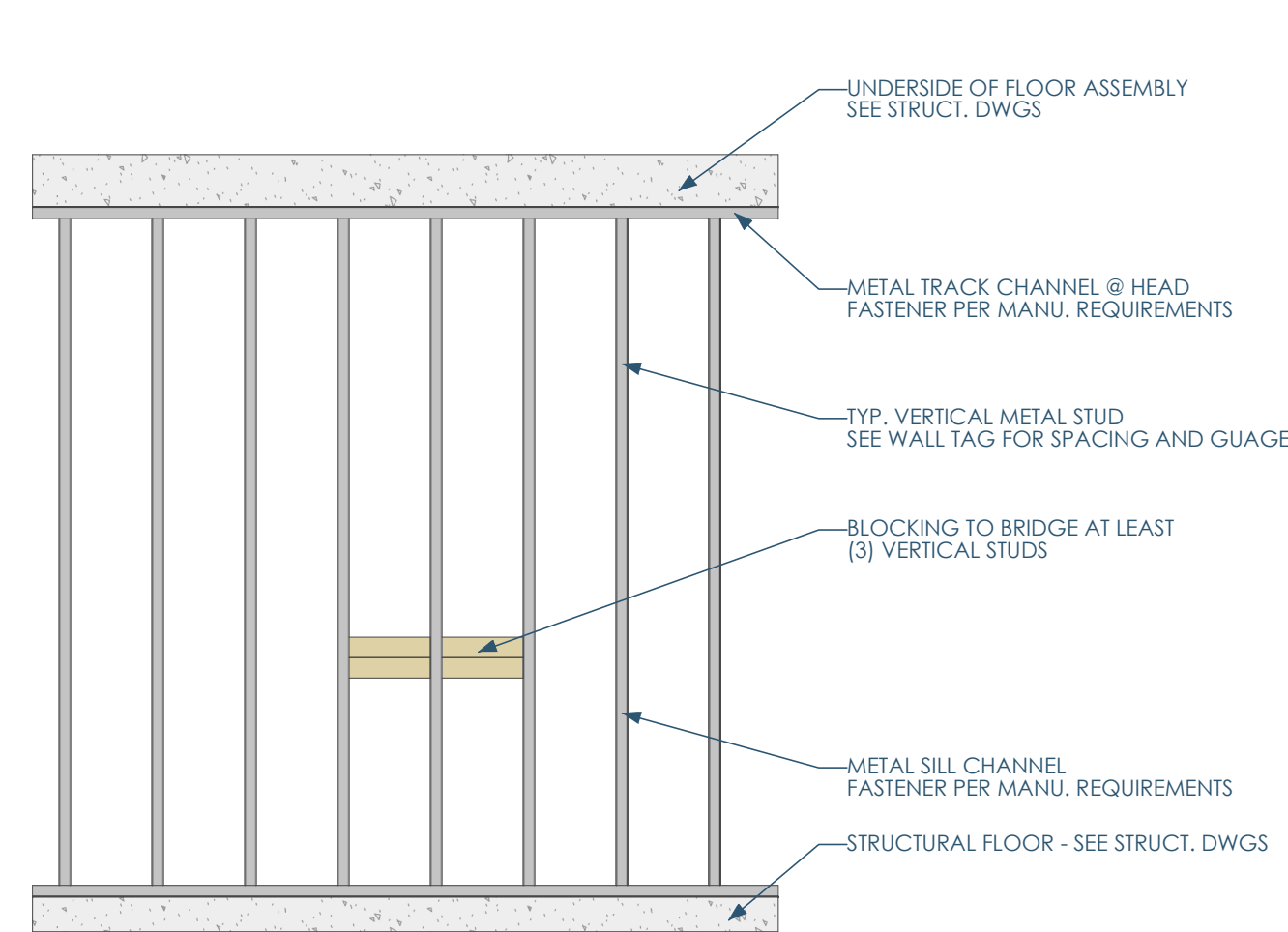


5C/A801 MS - DETAIL - DOOR HEAD  
3/8"=1'-0"

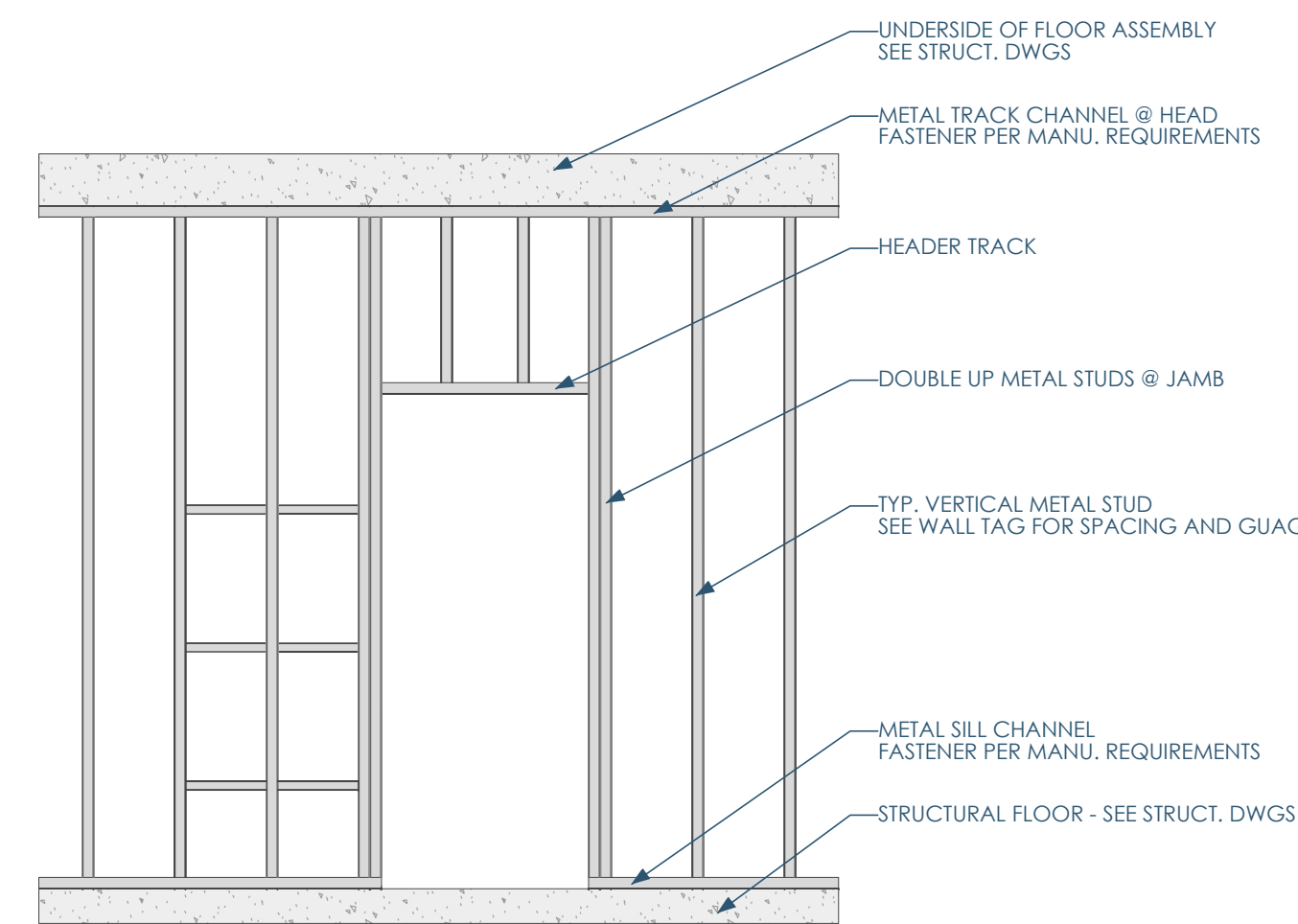
1	<ul style="list-style-type: none"> <li>1ST POSITION = CORE MATERIAL                     <ul style="list-style-type: none"> <li>W= WOOD</li> <li>M= METAL</li> <li>C= CONCRETE</li> <li>B= MASONRY BLOCK</li> </ul> </li> </ul>							
2	<ul style="list-style-type: none"> <li>2ND POSITION = SIZE OF CORE                     <ul style="list-style-type: none"> <li>WOOD: NOMINAL STUD SIZES (EX: 4 x 3 1/2")</li> <li>METAL STUD (EX: 358 = 3 5/8")</li> <li>CONCRETE: ACTUAL WALL THICKNESS (EX: 8 = 8")</li> <li>MASONRY: NOMINAL BRICK MODULES (EX: 8 = 7 5/8")</li> </ul> </li> </ul>							
3	<ul style="list-style-type: none"> <li>3RD POSITION = LAYER MATERIAL</li> </ul>							
	LAYER 4-L	LAYER 3-L	LAYER 2-L	LAYER 1 (CORE)	LAYER 2-R	LAYER 3-R	LAYER 4-R	UL NUMBER
A=			5/8" GYP. BD.	600S137-54-P (16 GA.) METAL STUDS 16" O.C. W/ BATT. INSULATION	5/8" GYP. BD.			
B=			5/8" GYP. BD.	(20 GA.) METAL STUDS 24" O.C. W/ BATT. INSULATION 362S137-33-P, 600S137-33-P or 600S137-33-P	5/8" GYP. BD.			
Z=				(20 GA.) METAL STUDS 24" O.C. W/ BATT. INSULATION	5/8" GYP. BD.			
4	<ul style="list-style-type: none"> <li>4TH POSITION = FIRE RATING                     <ul style="list-style-type: none"> <li>0=0 HOUR</li> <li>1=1 HOUR</li> <li>2=2 HOUR</li> <li>3=3 HOUR</li> <li>5=5/2 HOUR</li> </ul> </li> </ul>							
5	<ul style="list-style-type: none"> <li>5TH POSITION (AND BEYOND) = MODIFIERS                     <ul style="list-style-type: none"> <li>A= PARTIAL HEIGHT PARTITION (WALL LAYER 1, 2, 3 &amp; 4 TO TERMINATE AT OR BELOW HUNG CEILING)</li> <li>B= PARTIAL HEIGHT PARTITION (WALL LAYER 1 TO EXTEND ABOVE THE FINISHED CEILING AS NECESSARY) (WALL LAYER 2, 3 &amp; 4 TO EXTEND 6" ABOVE FINISHED CEILING HEIGHT)</li> <li>C= PARTIAL HEIGHT PARTITION (WALL LAYER 1 TO EXTEND TO BOTTOM OF STRUCTURE) (WALL LAYER 2 &amp; 3 TO EXTEND 6" ABOVE FINISHED CEILING HEIGHT)</li> <li>D= FULL HEIGHT TO UNDERSIDE OF STRUCTURAL DECK/SHEATHING (WALL LAYER 1, 2, 3 &amp; 4 TO TERMINATE STRUCTURAL DECK/SHEATHING)</li> <li>F= FULL HEIGHT TO UNDERSIDE OF STRUCTURAL FLOOR/ROOF ASSEMBLY (WALL LAYER 1, 2, 3 &amp; 4 TO TERMINATE AT THE UNDERSIDE OF STRUCTURAL FLOOR/ROOF ASSEMBLY)</li> <li>K= KNEE WALL PARTITION</li> <li>R= FURRED OUT WALL</li> </ul> </li> </ul>							
	<ul style="list-style-type: none"> <li>EXAMPLE: M358Z0FR                     <ul style="list-style-type: none"> <li>1ST POSITION = M = METAL</li> <li>2ND POSITION = 358 = 3 5/8" METAL STUD</li> <li>3RD POSITION = Z = (20 GA.) METAL STUDS 24" O.C. W/ BATT. INSULATION IN THE CAVITY W/ 5/8" GYP. BD. ON ONLY ONE SIDE</li> <li>4TH POSITION = 0 = 0 HOUR</li> <li>5TH POSITION = F = FULL HEIGHT TO UNDERSIDE OF STRUCTURAL FLOOR/ROOF ASSEMBLY</li> <li>6TH POSITION = R = FURRED OUT WALL</li> </ul> </li> </ul>							

2B/A801 PARTITION TAG NOMENCLATURE

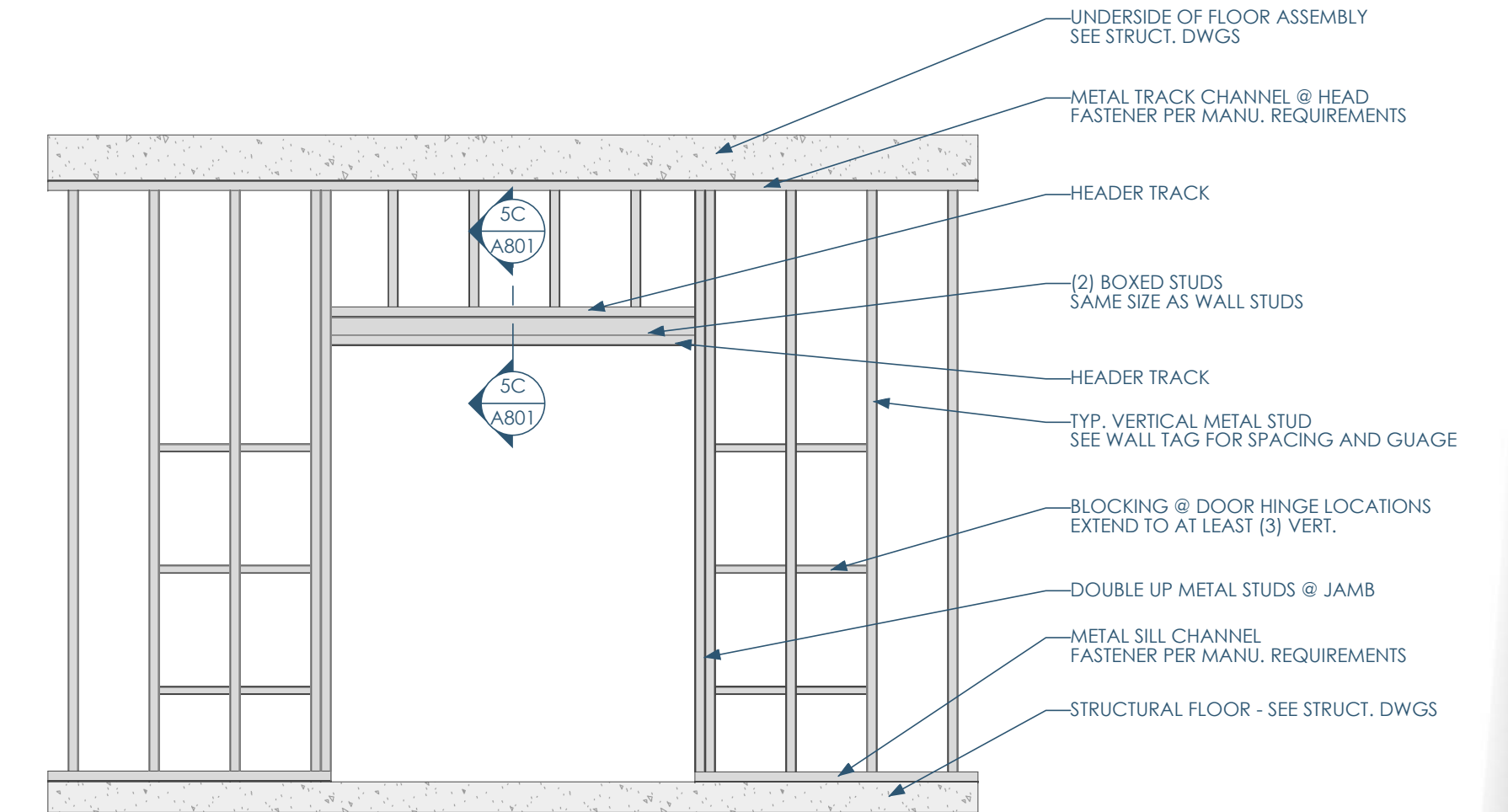
B



4A/A801 MS - ELEVATION AT WINDOW OPENING  
3/8"=1'-0"



3A/A801 MS - ELEVATION AT DOOR THAN 3FT WIDE  
3/8"=1'-0"



2A/A801 MS - ELEVATION AT DOOR OPENING THAN 3FT OPENING  
3/8"=1'-0"

A

5A/A801 MS - ELEVATION AT WALL  
3/8"=1'-0"



Owner: All Surfaces  
5525 Tradesmen Dr  
Madison, WI 53718  
allsurfaces.com | 952.884.6033



GC: Lake Country Construction Group  
161 Horizon Dr  
Verona, WI 53593  
608.845.1398



Architect: Opening Design  
17 S Fairchild | FL 7  
Madison, WI 53703  
ryan@openingdesign.com | 773.425.6456

5

4

3

2

1

This project, like most Opening Design's projects, is open source. (Attribution-ShareAlike 4.0 International) CC-BY-SA 4.0 - freely available to any party for future use, assuming the terms such as Attribution and ShareAlike are honored.