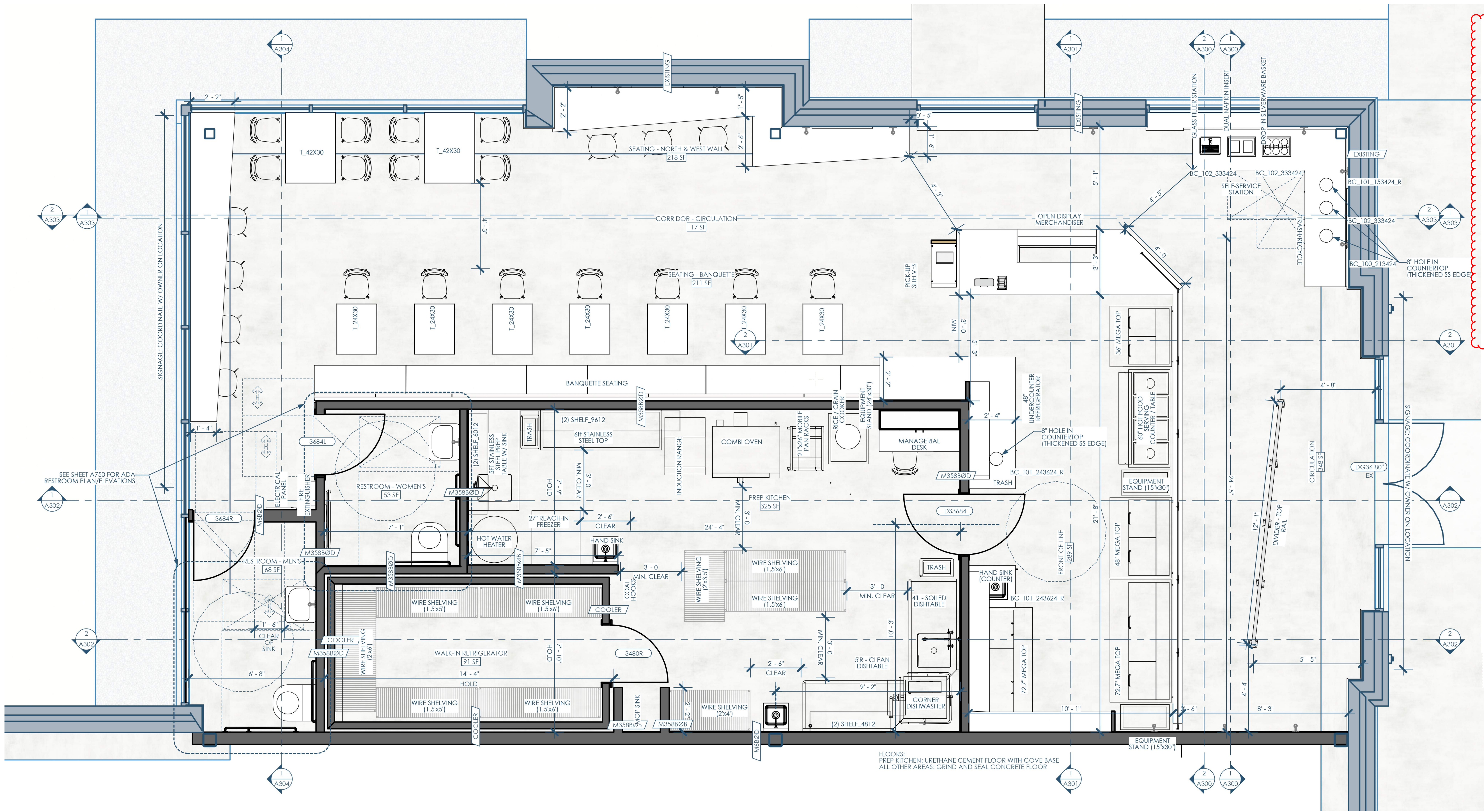


Revisions: 12/11/2025

- Added more dimensions throughout
- Removed the type 2 hood above dishwasher and range/oven
- Relocated lights in prep area
- Updated mislabeled lights along banquet seating—now (L7). Still T.B.D.
- Updated (2) restroom doors to 3684
- Remove scheduled lights from walk-in cooler. Cooler has integral lighting
- Massaged plan to accommodate kitchen equipment layout
  - Changed millwork sizes slightly to accommodate the massaged layout
- Located hot water heater next to walk-in cooler
  - relocated adjacent freezer
- New sink location next to D.W.
- updated dimensions around walk-in cooler
- increased wall thickness near restroom to accommodate electrical panel
  - located fire extinguisher next to electrical panel
- Include of S.S. wall panels behind range and oven
- Floors:
  - Prep Kitchen: Urethane cement floor with cove base
  - All other areas: grind and seal concrete floor



1/A100 FLOOR PLAN - 1ST  
3/8"=1'-0"

NUMBER	NAME	AREA	FUNCTION OF SPACE	AREA PER OCCUPANT	OCCUPANTS	EMERGENCY LIGHTING
100	CIRCULATION	348	CIRCULATION	0	0.00	Y
101	FRONT OF LINE	289	KITCHEN - COMMERCIAL	200	1.50	-
102	SEATING - NORTH & WEST WALL	218	ASSEMBLY - UNCONCENTRATED	14	14.50	Y
103	CORRIDOR - CIRCULATION	117	CIRCULATION	0	0.00	Y
104	SEATING - BANQUETTE	211	ASSEMBLY - UNCONCENTRATED	15	14.10	Y
105	RESTROOM - WOMEN'S	53	CIRCULATION	0	0.00	-
106	RESTROOM - MEN'S	68	CIRCULATION	0	0.00	-
107	WALK-IN REFRIGERATOR	91	STORAGE	300	0.30	-
108	PREP KITCHEN	325	KITCHEN - COMMERCIAL	200	1.60	-
	Sum:	1720			32	
109	OUTDOOR SEATING	180	ASSEMBLY - UNCONCENTRATED	15	12	-
	Sum:				44	

2/A100 ROOM SCHEDULE - OCCUPANCY



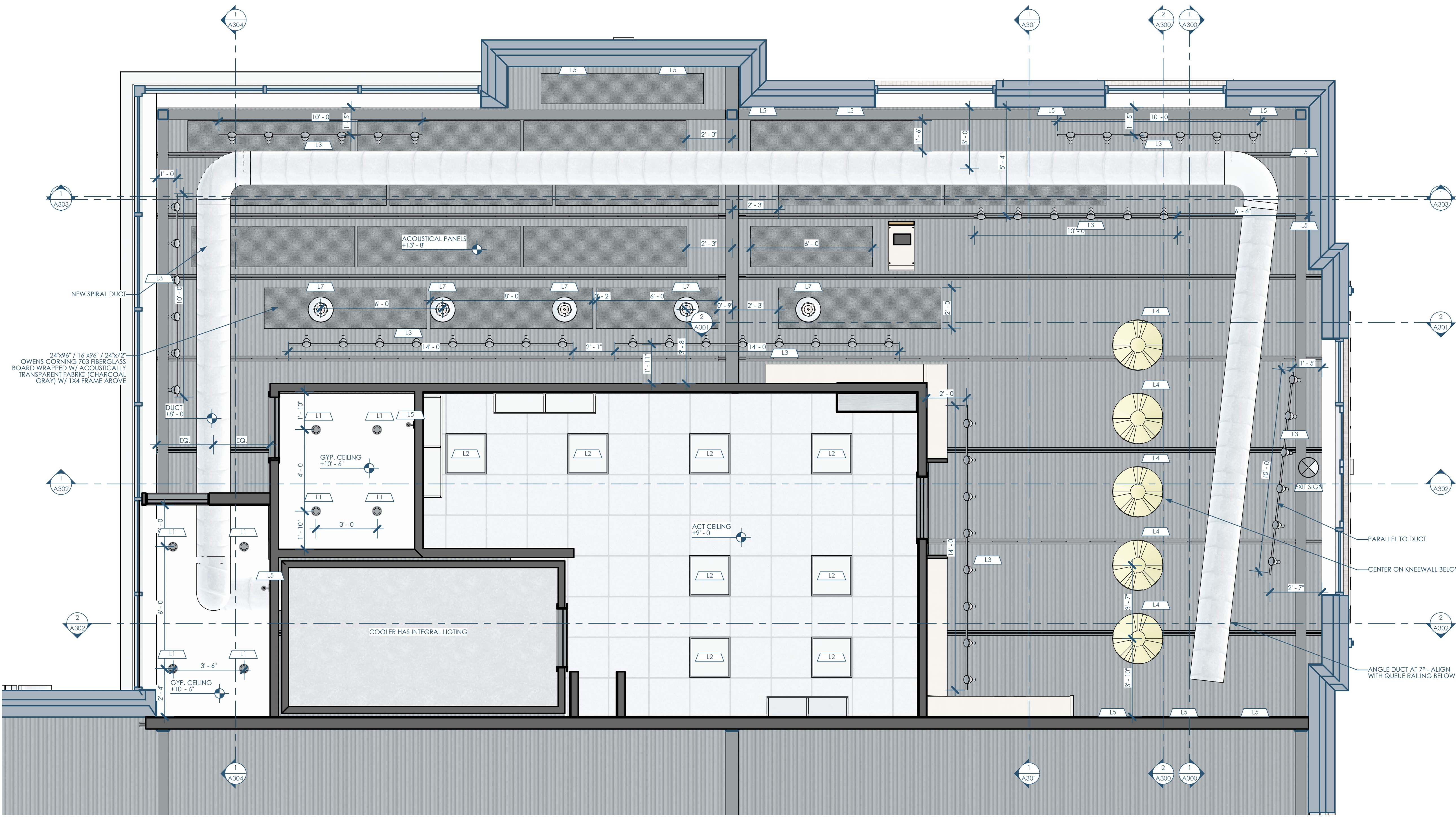
Owner: Forage Kitchen  
5352 King James Way  
Fitchburg, WI 53719  
eatforage.com

GC: Venture Construction Group  
17500 W. Liberty Lane  
New Berlin, WI 53146  
vcginc.com

Architect: Opening Design  
17 S Fairchild | FL 7  
Madison, WI 53703  
ryan@openingdesign.com | 773.425.6456

This project, like most OpeningDesign's projects, is open source (Attribution-ShareAlike 4.0 International—CC BY-SA 4.0)—freely available to any party for future use, assuming the terms such as Attribution and ShareAlike are honored.

- Revisions: 12/11/2025**
- Added more dimensions throughout
  - Removed the type 2 hood above dishwasher and range/oven
  - Relocated lights in prep area
  - Updated mislabeled lights along banquet seating—now (L7). Still T.B.D.
  - Updated (2) restroom doors to 3684
  - Remove scheduled lights from walk-in cooler. Cooler has integral lighting
  - Massaged plan to accommodate kitchen equipment layout
    - Changed millwork sizes slightly to accommodate the massaged layout
  - Located hot water heater next to walk-in cooler
    - relocated adjacent freezer
  - New sink location next to D.W.
  - updated dimensions around walk-in cooler
  - increased wall thickness near restroom to accommodate electrical panel
    - located fire extinguisher next to electrical panel
  - Include of S.S. wall panels behind range and oven
  - Floors:
    - Prep Kitchen: Urethane cement floor with cove base
    - All other areas: grind and seal concrete floor



1/A150 1ST FLR RCP  
3/8"=1'-0"

MARK	TYPE	MANUFACTURER	MODEL	DESCRIPTION	TYPE COMMENTS	URL
L1	CAN LIGHT	LITHONIA	LDN4	4" W BRUSH ALUM TRIM	-	<a href="http://tinyurl.com/Scfawayb">http://tinyurl.com/Scfawayb</a>
L2	2X2 LED FLAT PANEL	LITHONIA	CPX 2X2 3200LM 80 CRI 30K SWL MIN10	-	-	<a href="https://tinyurl.com/3vwvau65">https://tinyurl.com/3vwvau65</a>
L3	TRACK LIGHTING	JUNO LIGHTING	T620	BLACK	HEAD PER 2FT (SEE PLANS FOR LENGTH OF TRACK)	<a href="http://tinyurl.com/3wmsxhuf">http://tinyurl.com/3wmsxhuf</a>
L4	PENDANT	STUFF BY ANDREW NEYER	DUNE LIGHT - 30"	DESERT	w/ G40 WHITE BULB	<a href="http://tinyurl.com/2xehak7">http://tinyurl.com/2xehak7</a>
L5	WALL SCONCE	STUFF BY ANDREW NEYER	PIPE LIGHT	BLACK	w/ G25 WHITE BULB	<a href="http://tinyurl.com/3dxuouse">http://tinyurl.com/3dxuouse</a>
L7	PENDANT	TBD	TBD	TBD	TBD	TBD

2/A150 LIGHTING SCHEDULE

- LIGHTING NOTES:**
- ALL BULBS AS CLOSE TO 3000K (COLOR TEMP.) AS POSSIBLE
  - ALL BULBS TO BE LED
  - EMERGENCY ILLUMINATION PER IBC 1008 (CONTRACTOR/ELECTRICIAN TO ASSURE THE FOLLOWING)
  - SEE OCCUPANCY ROOM SCHEDULE FOR THOSE SPACES THAT NEED EMERGENCY LIGHTING (ILLUMINATION). IN ADDITION, LANDINGS OUTSIDE MAJOR EXITS REQUIRE EMERGENCY LIGHTING AS WELL.
  - EMERGENCY LIGHTING TO BE A MINIMUM 1 FOOT CANDLE THROUGHOUT DESIGNATED SPACES.
  - THE EMERGENCY POWER SYSTEM SHALL PROVIDE POWER FOR A DURATION OF NOT LESS THAN 90 MINUTES AND SHALL CONSIST OF STORAGE BATTERIES, UNIT EQUIPMENT OR AN ON-SITE GENERATOR.
  - EXIT SIGNS SHALL BE INTERNALLY OR EXTERNALLY ILLUMINATED PER IBC 1013.3
  - IF THE AUTHORITY HAVING JURISDICTION (AHJ) REQUIRES IT, THE ELECTRICAL CONTRACTOR MUST SUBMIT PLANS TO DEMONSTRATE COMPLIANCE WITH EMERGENCY LIGHTING AND ENERGY CODE REQUIREMENTS. THE CONTRACTOR NEEDS TO PROVIDE THE ARCHITECT WITH COPIES OF ALL APPROVAL LETTERS.

4/A150 LIGHTING NOTES

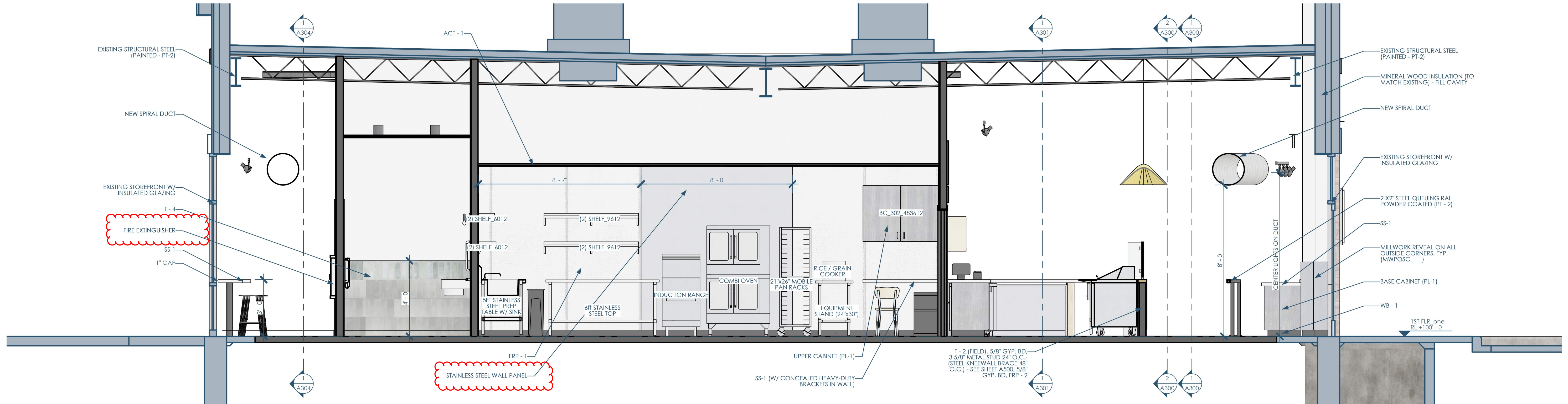


Owner: Forage Kitchen  
5352 King James Way  
Fitchburg, WI 53719  
eatforage.com

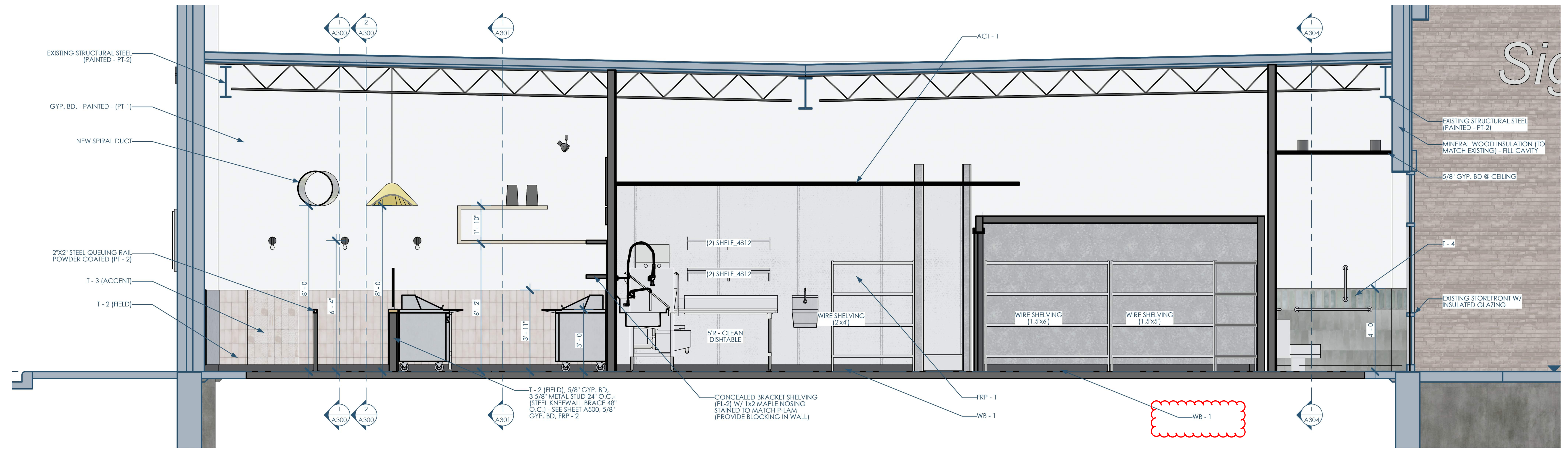
GC: Venture Construction Group  
17500 W. Liberty Lane  
New Berlin, WI 53146  
vcginc.com

Architect: OpeningDesign  
17 S Fairchild | FL 7  
Madison, WI 53703  
ryan@openingdesign.com | 773.425.6456

This project, like most OpeningDesign's projects, is open source (Attribution-ShareAlike 4.0 International—CC BY-SA 4.0)—freely available to any party for future use, assuming the terms such as Attribution and ShareAlike are honored.



1/A302 SECTION - KITCHEN - LOOKING NORTH  
3/8"=1'-0"



2/A302 SECTION - KITCHEN - LOOKING SOUTH  
3/8"=1'-0"



Owner: Forage Kitchen  
5352 King James Way  
Fitchburg, WI 53719  
eatforage.com

GC: Venture Construction Group  
17500 W. Liberty Lane  
New Berlin, WI 53146  
vcginc.com

Architect: OpeningDesign  
17 S Fairchild | FL 7  
Madison, WI 53703  
ryan@openingdesign.com | 773.425.6456

SECTIONS  
FK - BROOKFIELD  
350 DISCOVERY DR, BROOKFIELD, WI 53045

A302

This project, like most OpeningDesign's projects, is open source (Attribution-ShareAlike 4.0 International - CC BY-SA 4.0) - freely available to any party for future use, assuming the terms such as Attribution and ShareAlike are honored.