

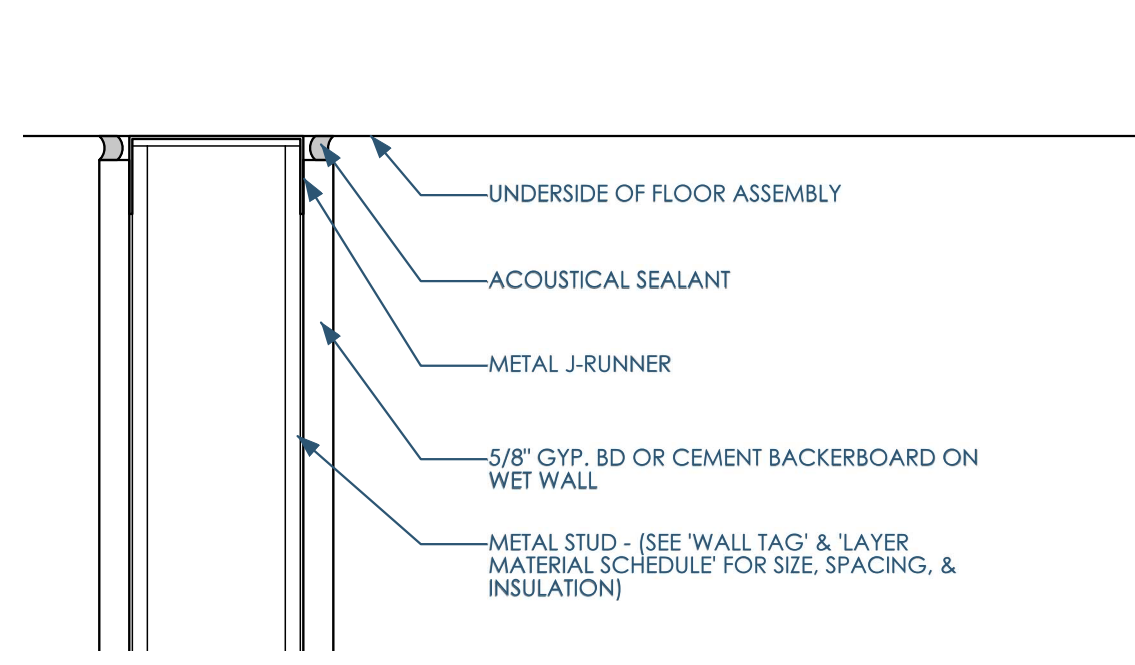
5

4

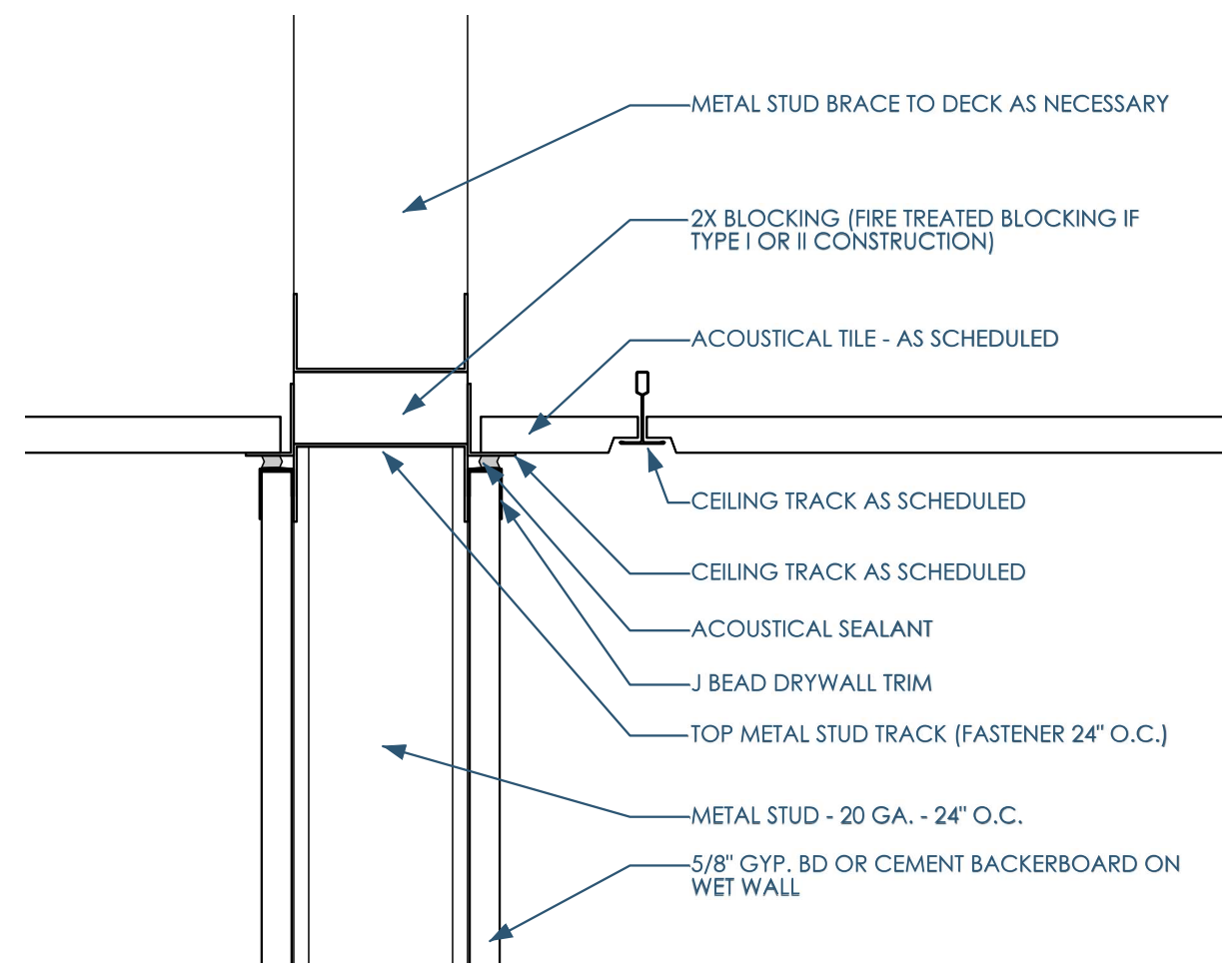
3

2

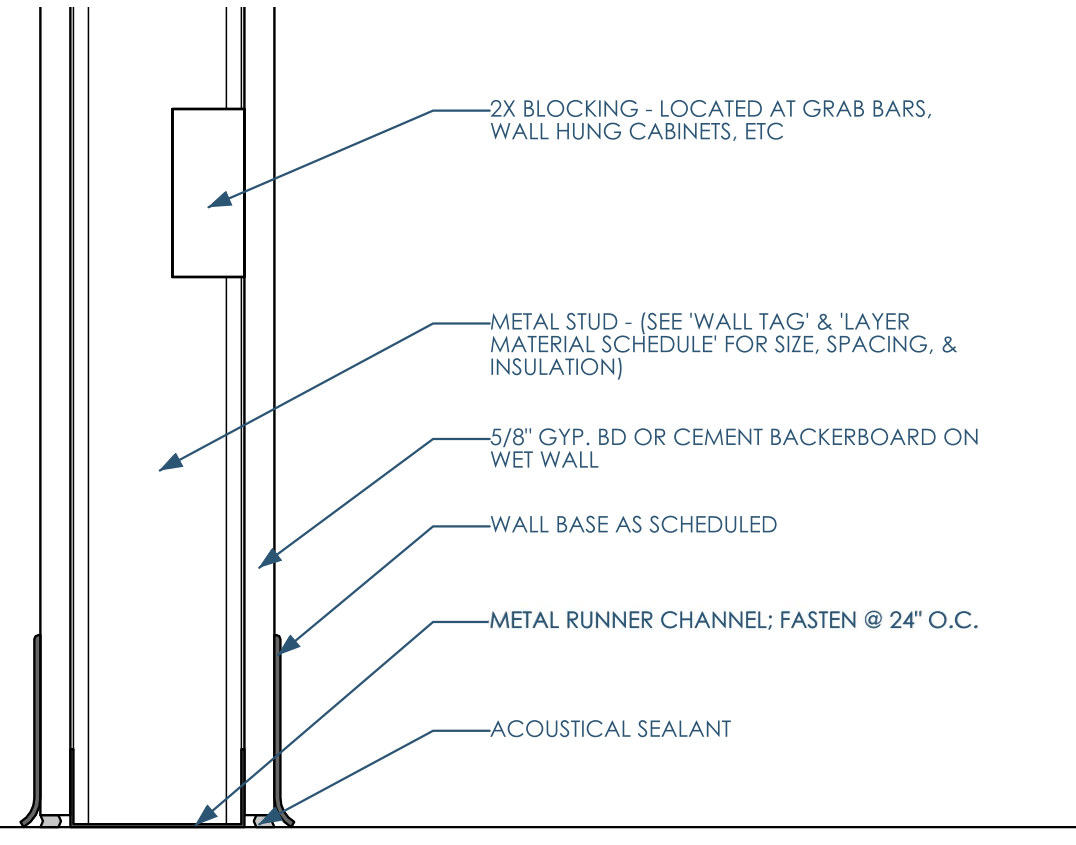
1



2/A800 M_BØD - FULL HEIGHT PARTITION NOT RATED - HEAD
3\"/>



3/A800 M_BØB - PARTIAL HEIGHT PARTITION NOT RATED - HEAD
3\"/>



1/A800 M_BØD - FULL HEIGHT PARTITION NOT RATED - BASE
3\"/>

3RD POSITION = LAYER MATERIAL							
INTERIOR	LAYER 1 (CORE)			EXTERIOR			UL NUMBER
	LAYER 4-L	LAYER 3-L	LAYER 2-L	LAYER 1 (CORE)	LAYER 2-R	LAYER 3-R	
A=			5/8" GYP. BD.	WOOD: N/A METAL: S137 (1-3/8" FLANGE) PUNCHED - 33MILS (20GA) - 16' O.C. W/O BATT. INSULATION	5/8" GYP. BD.		
B=			5/8" GYP. BD.	WOOD: N/A METAL: S137 (1-3/8" FLANGE) PUNCHED - 33MILS (20GA) - 16' O.C. W/ BATT. INSULATION	5/8" GYP. BD.		
C=			5/8" GYP. BD.	WOOD: N/A METAL: S137 (1-3/8" FLANGE) PUNCHED - 33MILS (20GA) - 16' O.C. W/O BATT. INSULATION	1/2" AIR GAP		
D=			5/8" GYP. BD.	WOOD: N/A METAL: S137 (1-3/8" FLANGE) PUNCHED - 33MILS (20GA) - 16' O.C. W/ BATT. INSULATION	1/2" AIR GAP		
E=			5/8" GYP. BD.	WOOD: N/A METAL: S137 (1-3/8" FLANGE) PUNCHED - 33MILS (20GA) - 16' O.C. W/ RIGID INSULATION			
S=			5/8" GYP. BD (VAPOR BARRIER NOT NECESSARY)	WOOD: N/A METAL: EXISTING STUDS W/ MINERAL WOOL INSULATION	EXISTING LAYERS	EXISTING LAYERS	EXISTING LAYERS
T=			5/8" GYP. BD OVER VAPOR BARRIER	WOOD: N/A METAL: S137 (1-3/8" FLANGE) STRUCTURAL STUD PUNCHED - 33MILS (20GA) 33KSI - 16' O.C. W/ BATT. INSULATION	BUILDING WRAP OVER 1/2" CDX SHEATHING	7/8" AIR GAP	BRICK - MODULAR - 3 1/2" x 2 1/4" x 7 1/2" (4 x 2 1/2 x 8)
Z=				WOOD: N/A METAL: S137 (1-3/8" FLANGE) PUNCHED - 33MILS (20GA) - 16' O.C. W/ BATT. INSULATION	5/8" GYP. BD.		
4 • 4TH POSITION: FIRE RATING • Ø=0 HOUR • 1=1 HOUR • 2=2 HOUR • 3=3 HOUR • 5=5/2 HOUR							
5 • 5TH POSITION (AND BEYOND) = MODIFIERS • A=PARTIAL HEIGHT PARTITION: (WALL LAYER 1, 2, 3 & 4 TO TERMINATE AT OR BELOW HUNG CEILING) • B=PARTIAL HEIGHT PARTITION: (LAYER 1 TO EXTEND ABOVE THE FINISHED CEILING AS NECESSARY) (WALL LAYER 2, 3 & 4 TO EXTEND 6" ABOVE FINISHED CEILING HEIGHT) • C=PARTIAL HEIGHT PARTITION: (LAYER 1 TO EXTEND TO BOTTOM OF STRUCTURE) (WALL LAYER 2, 3 & 4 TO EXTEND 6" ABOVE FINISHED CEILING HEIGHT) • D=FULL HEIGHT TO UNDERSIDE OF STRUCTURAL DECK/SHEATHING: (WALL LAYER 1, 2, 3 & 4 TO TERMINATE STRUCTURAL DECK/SHEATHING) • F=FULL HEIGHT TO UNDERSIDE OF STRUCTURAL FLOOR/ROOF ASSEMBLY (WALL LAYER 1, 2, 3 & 4 TO TERMINATE AT THE UNDERSIDE OF STRUCTURAL FLOOR/ROOF ASSEMBLY) • K=KNEE WALL PARTITION • R=FURRED OUT WALL							
• EXAMPLE: M3SRZQFR • 1ST POSITION = M = METAL • 2ND POSITION = 3SR = 3-5/8" METAL STUD • 3RD POSITION = Z = S137 (1-3/8" FLANGE) PUNCHED - 33MILS (20GA) - 16' O.C. - W/ BATT. INSULATION IN THE CAVITY W/ 5/8" GYP. BD. ON ONLY ONE SIDE • 4TH POSITION = Ø = 0 HOUR • 5TH POSITION = F = FULL HEIGHT TO UNDERSIDE OF STRUCTURAL FLOOR/ROOF ASSEMBLY • 6TH POSITION = R = FURRED OUT WALL							

4/A800 PARTITION TAG NOMENCLATURE

B

B

A

A

Owner: Forage Kirchen
 5352 King James Way
 Fitchburg, WI 53719
 eatforage.com

GC: Venture Construction Group
 17500 W. Liberty Lane
 New Berlin, WI 53146
 vcginc.com

Architect: OpeningDesign
 17 S Fairchild | FL 7
 Madison, WI 53703
 ryan@openingdesign.com | 773.425.6456

5

4

3

2

1

This project, like most OpeningDesign's projects, is open source. (Attribution-ShareAlike 4.0 International) CC-BY-SA 4.0. --freely available to any party for future use, assuming the terms such as Attribution and ShareAlike are honored.