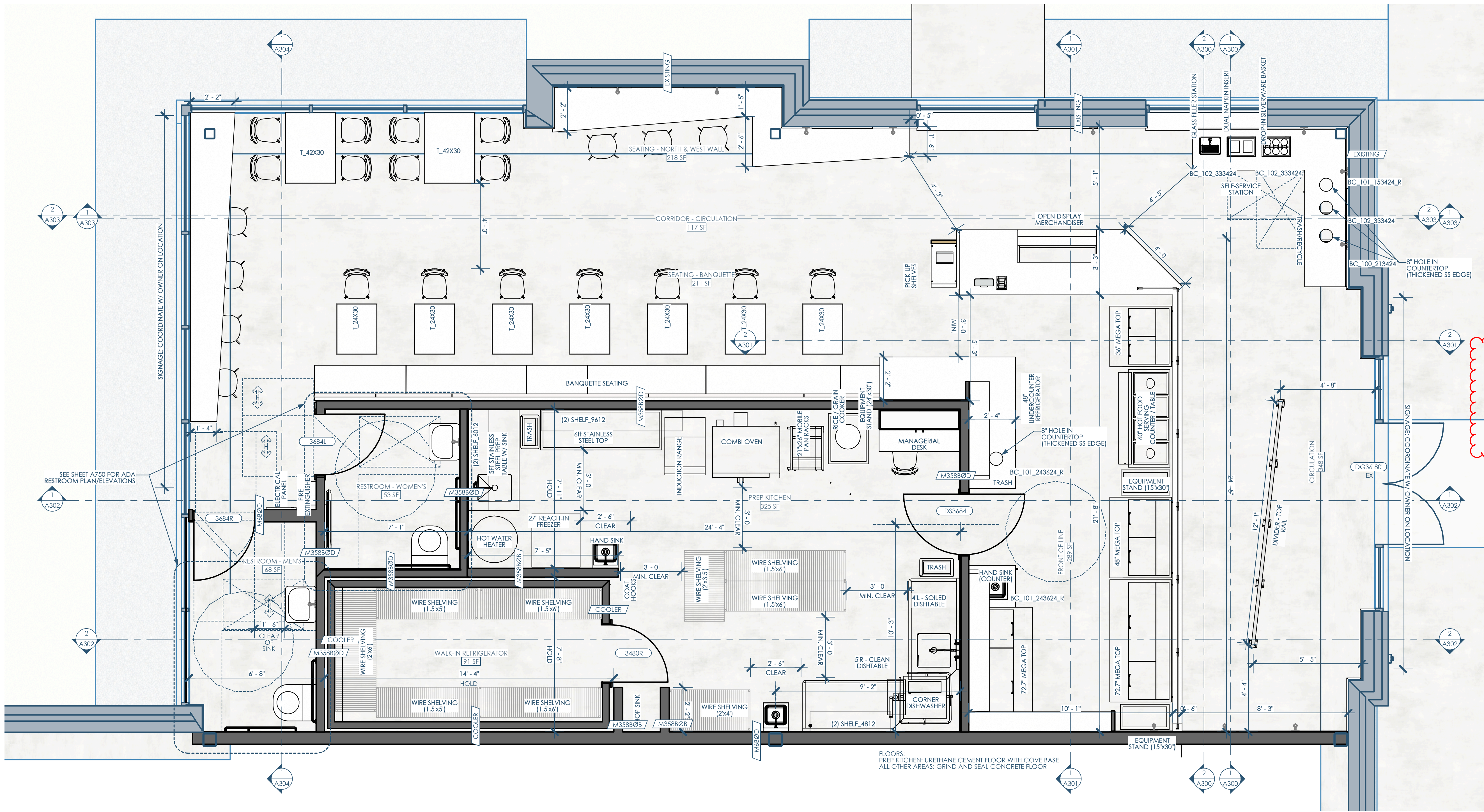


- Revisions: 12/11/2025**
- Added more dimensions throughout
 - Removed the Type 2 hood above dishwasher and range/oven
 - Relocated lights in prep area
 - Updated mislabeled lights along banquet seating - now (L7). Still T.B.D.
 - Updated (2) restroom doors to 3684
 - Remove scheduled lights from walk-in cooler. Cooler has integral lighting
 - Massaged plan to accommodate kitchen equipment layout
 - Changed millwork sizes slightly to accommodate the massaged layout
 - Located hot water heater next to walk-in cooler
 - relocated adjacent freezer
 - New sink location next to D.W.
 - updated dimensions around walk-in cooler
 - increased wall thickness near restroom to accommodate electrical panel
 - located fire extinguisher next to electrical panel
 - Include of S.S. wall panels behind range and oven
 - Floors:
 - Prep Kitchen: Urethane cement floor with cove base
 - All other areas: grind and seal concrete

- Revisions: 12/18/2025**
- Added the Type II, above range and over, again
 - Type II, above the dishwasher, is removed, per revision 12/11/25
 - Changed the end of condition for the sneeze guard.
 - Tweaked the dimension around the walk-in cooler

12/18/2025 Revisions



1/A100 FLOOR PLAN - 1ST
3/8"=1'-0"

NUMBER	NAME	AREA	FUNCTION OF SPACE	AREA PER OCCUPANT	OCCUPANTS	EMERGENCY LIGHTING
100	CIRCULATION	348	CIRCULATION	0	0.00	Y
101	FRONT OF LINE	289	KITCHEN - COMMERCIAL	200	1.50	-
102	SEATING - NORTH & WEST WALL	218	ASSEMBLY - UNCONCENTRATED	14	14.50	Y
103	CORRIDOR - CIRCULATION	117	CIRCULATION	0	0.00	Y
104	SEATING - BANQUETTE	211	ASSEMBLY - UNCONCENTRATED	15	14.10	Y
105	RESTROOM - WOMEN'S	53	CIRCULATION	0	0.00	-
106	RESTROOM - MEN'S	68	CIRCULATION	0	0.00	-
107	WALK-IN REFRIGERATOR	91	STORAGE	300	0.30	-
108	PREP KITCHEN	325	KITCHEN - COMMERCIAL	200	1.60	-
	Sum:	1720			32	
109	OUTDOOR SEATING	180	ASSEMBLY - UNCONCENTRATED	15	12	-
	Sum:				44	

2/A100 ROOM SCHEDULE - OCCUPANCY



Owner: Forage Kitchen
5352 King James Way
Fitchburg, WI 53719
eatforage.com

GC: Venture Construction Group
17500 W. Liberty Lane
New Berlin, WI 53146
vcginc.com

Architect: Opening Design
17 S Fairchild | FL 7
Madison, WI 53703
ryan@openingdesign.com | 773.425.6456

This project, like most OpeningDesign's projects, is open source (Attribution-ShareAlike 4.0 International - CC BY-SA 4.0) - freely available to any party for future use, assuming the terms such as Attribution and ShareAlike are honored.