

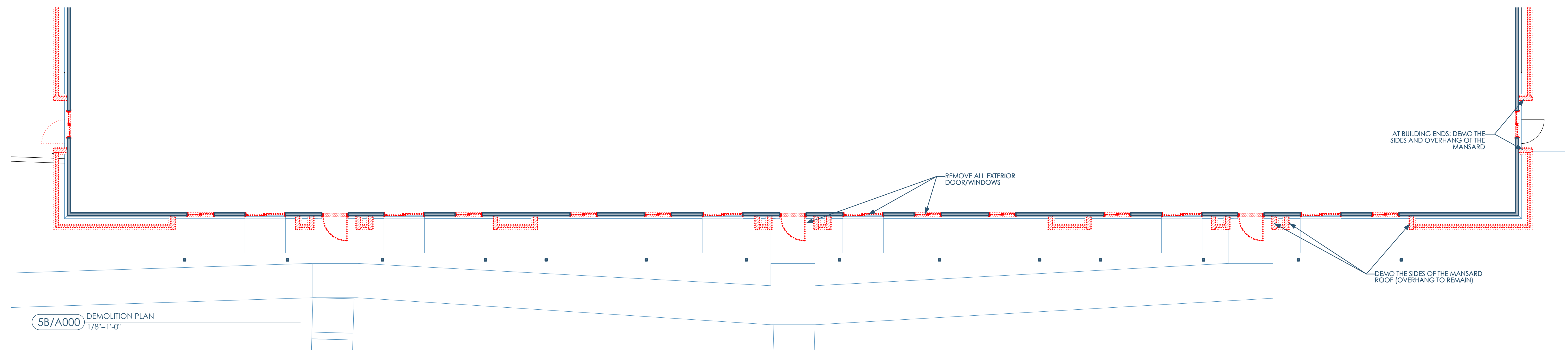
Belmar Apartments - Proposed Facade Renovation

2113 Red Arrow Trail

C

B

A



5A/A000 EXISTING - ALONG RED ARROW TRAIL 1



4A/A000 EXISTING - CORNER OF THURSTON LANE AND RED ARROW 1



2A/A000 EXISTING - ALONG RED ARROW TRAIL 2

PROPOSED REMOVAL OF FAUX MANSARD ROOFS (TYP.)



Owner: J.K. Rock, LLC
4929 Chalef Gardens Rd
Fitchburg WI 53711
josh@jrockhomes.com | 262.573.5310

Architect: OpeningDesign
17 S Fairchild | FL 7
Madison, WI 53703
ryan@openingdesign.com | 773.425.6456

NARRATIVE, EXISTING CONDITIONS & DEMOLITION PLAN
BELMAR APARTMENT HOMES - FACADE RENOVATION
2113 RED ARROW TRAIL, FITCHBURG, WI 53711

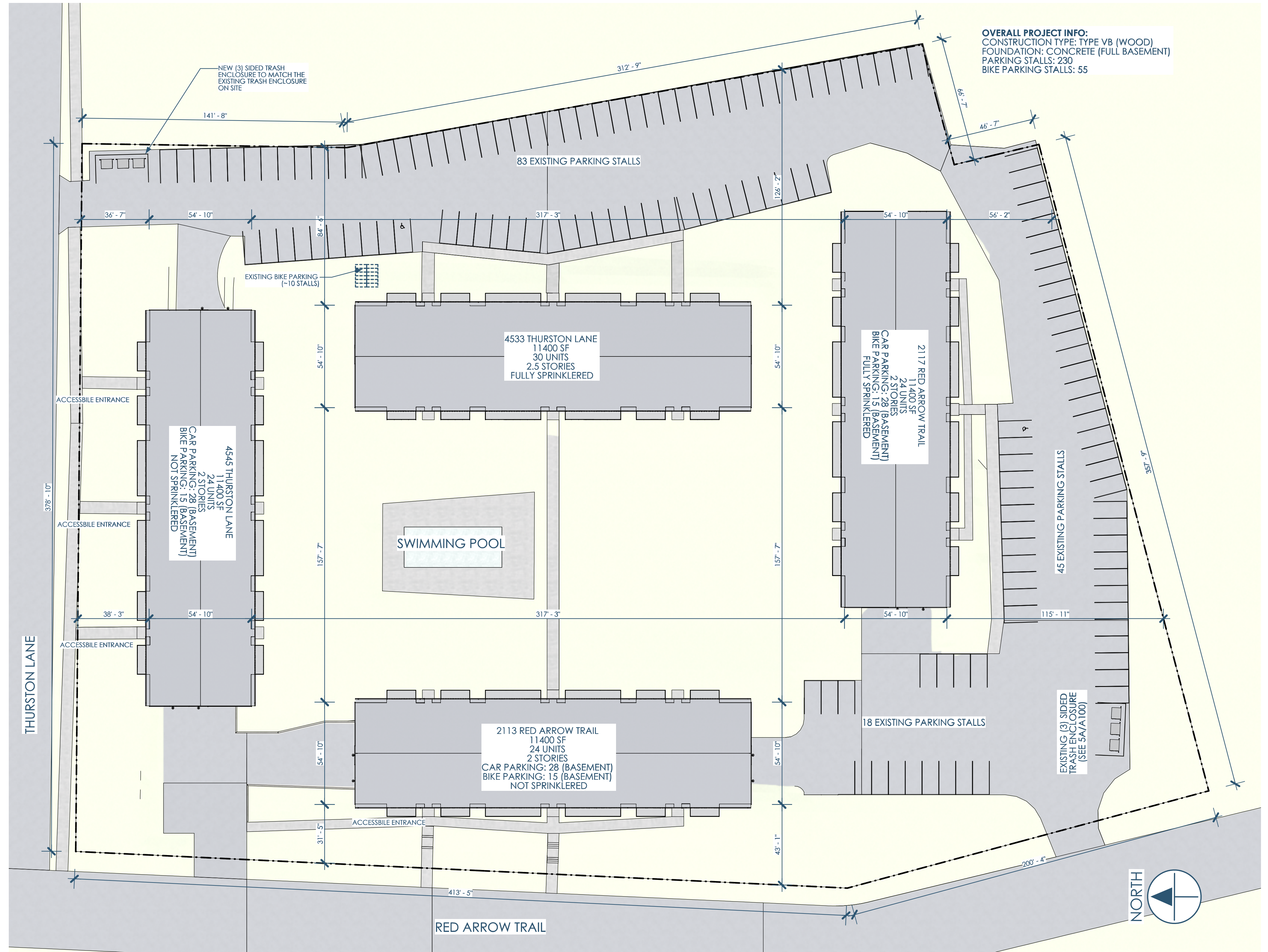
A000

This project, like most OpeningDesign's projects, is open source. (Attribution-ShareAlike 4.0 International-CC-BY-SA 4.0)-freely available to any party for future use, assuming the terms such as Attribution and ShareAlike are honored.

C

B

A



OVERALL PROJECT INFO:
 CONSTRUCTION TYPE: TYPE V8 (WOOD)
 FOUNDATION: CONCRETE (FULL BASEMENT)
 PARKING STALLS: 230
 BIKE PARKING STALLS: 55



5A/A100 EXISTING TRASH ENCLOSURE

4A/A100 OVERALL SITE PLAN
 1"=30'



Owner: J.K. Rock, LLC
 4929 Chalef Gardens Rd
 Fitchburg WI 53711
 josh@jrockhomes.com | 262.573.5310

Architect: OpeningDesign
 17 S Fairchild | FL 7
 Madison, WI 53703
 ryan@openingdesign.com | 773.425.6456

SITE PLAN
 BELMAR APARTMENT HOMES - FACADE RENOVATION
 2113 RED ARROW TRAIL, FITCHBURG, WI 53711

A100

This project, like most OpeningDesign's projects, is open source. (Attribution-ShareAlike 4.0 International=CC-BY-SA 4.0) - freely available to any party for future use, assuming the terms such as Attribution and ShareAlike are honored.

5

4

3

2

1

TOTAL VENTING ALONG RIDGE:
 5,760 IN²
 IF (7) VENTS: 823 IN² OPEN AREA PER VENT
 IF (8) VENTS: 720 IN² OPEN AREA PER VENT
 IF (9) VENTS: 640 IN² OPEN AREA PER VENT
 IF (10) VENTS: 576 IN² OPEN AREA PER VENT
 AREA PER VENT TALL DESIGN RECOMMENDED TO PREVENT SNOW COVER



AREAS WITH NEWLY FRAMED SOFFIT (TYP.)

FULLY ADHERED EPDM MEMBRANE

6"x6" BOX GUTTER

NEW COMPOSITE DECKING

1/4" SLOPE (EXISTING)
 1/4" SLOPE (EXISTING)



5C/A103 ROOF PLAN
 1/8"=1'-0"



Owner: J.K. Rock, LLC
 4929 Chalef Gardens Rd
 Fitchburg WI 53711
 josh@jrockhomes.com | 262.573.5310

Architect: OpeningDesign
 17 S Fairchild | FL 7
 Madison, WI 53703
 ryan@openingdesign.com | 773.425.6456

ROOF PLAN
 BELMAR APARTMENT HOMES - FACADE RENOVATION
 2113 RED ARROW TRAIL, FITCHBURG, WI 53711

A103

5

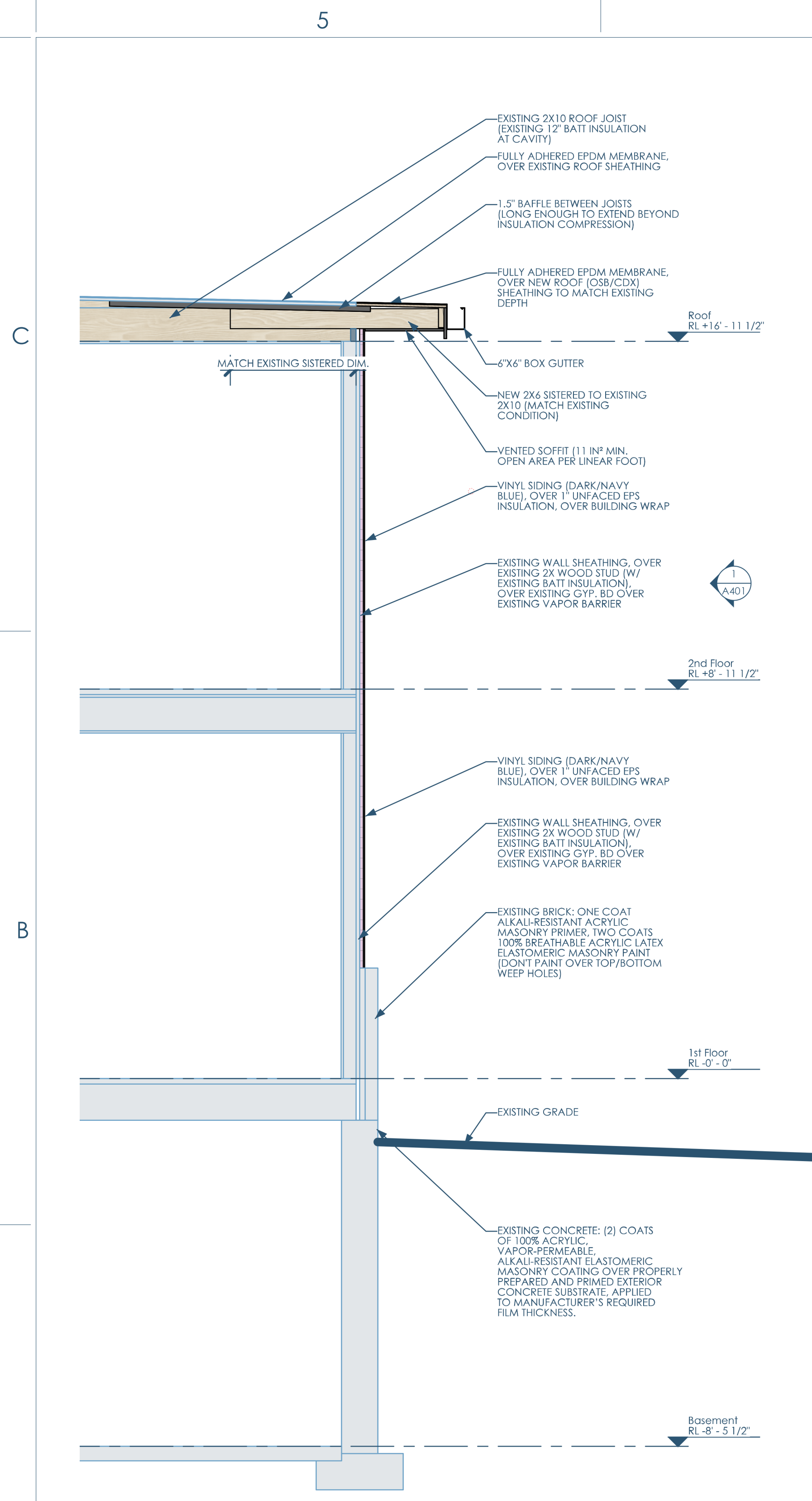
4

3

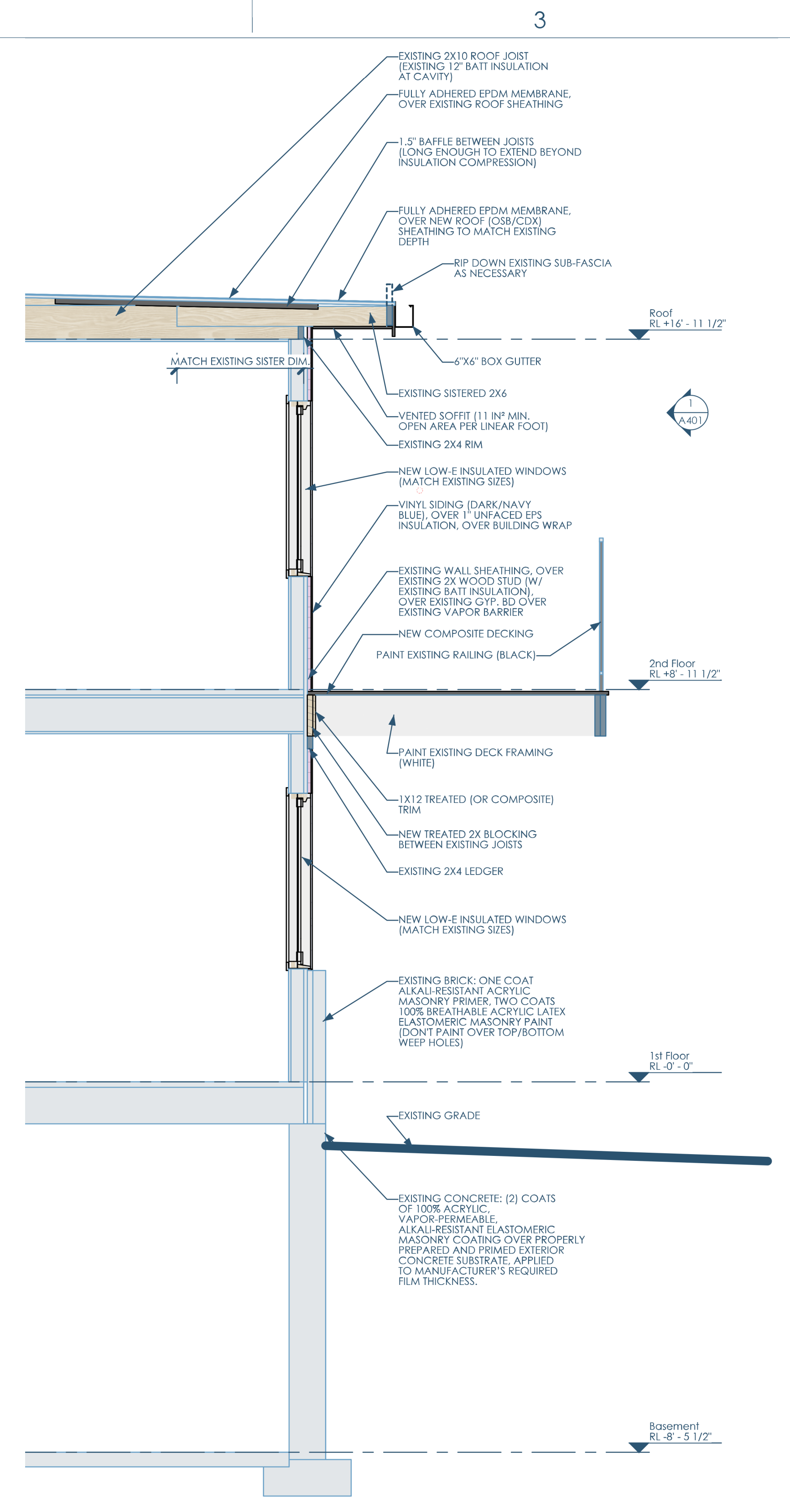
2

1

This project, like most OpeningDesign's projects, is open source (Attribution-ShareAlike 4.0 International=CC-BY-SA 4.0)---freely available to any party for future use, assuming the terms such as Attribution and ShareAlike are honored.



5A/A300 SECTION - E-W - AT WALL - LOOKING SOUTH
1/2"=1'-0"



4A/A300 SECTION - E-W - AT WINDOWS - LOOKING SOUTH
1/2"=1'-0"



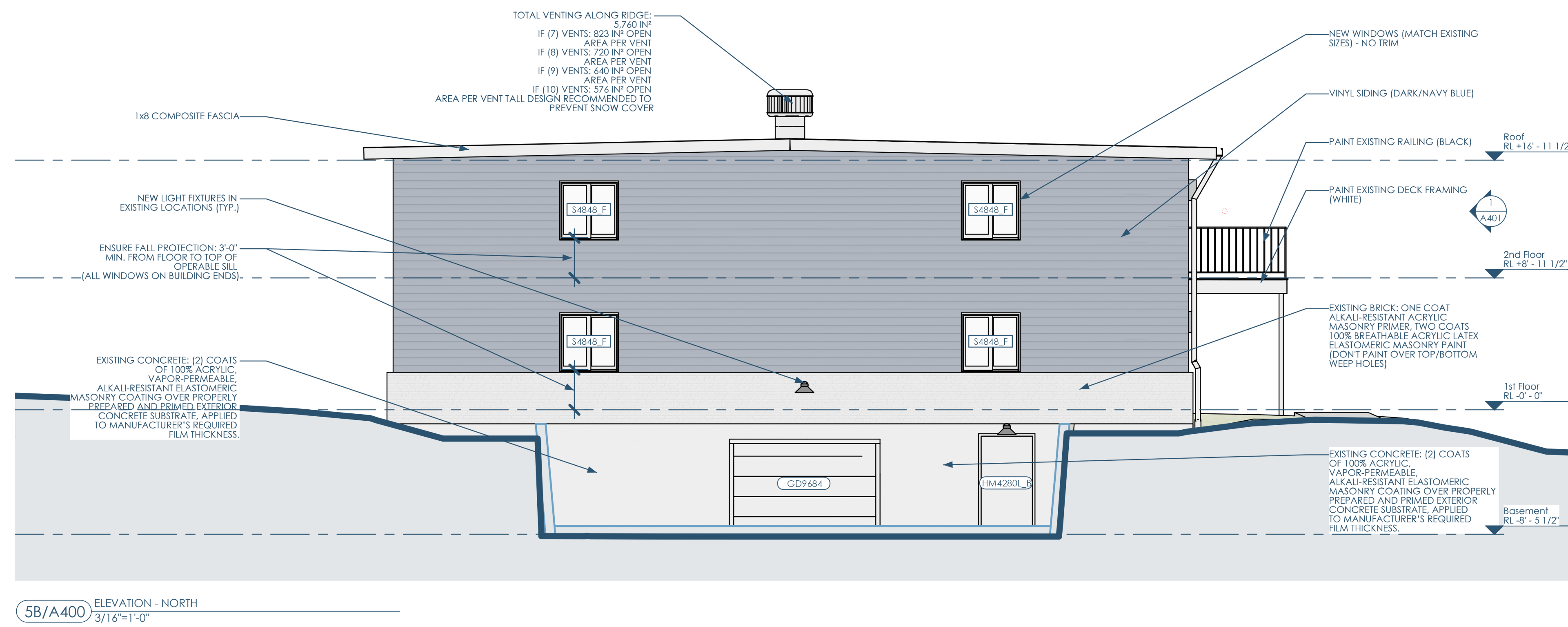
Owner: J.K. Rock, LLC
 4929 Chalef Gardens Rd
 Fitchburg WI 53711
 josh@jrockhomes.com | 262.573.5310

Architect: OpeningDesign
 17 S Fairchild | Fl 7
 Madison, WI 53703
 ryan@openingdesign.com | 773.425.6456

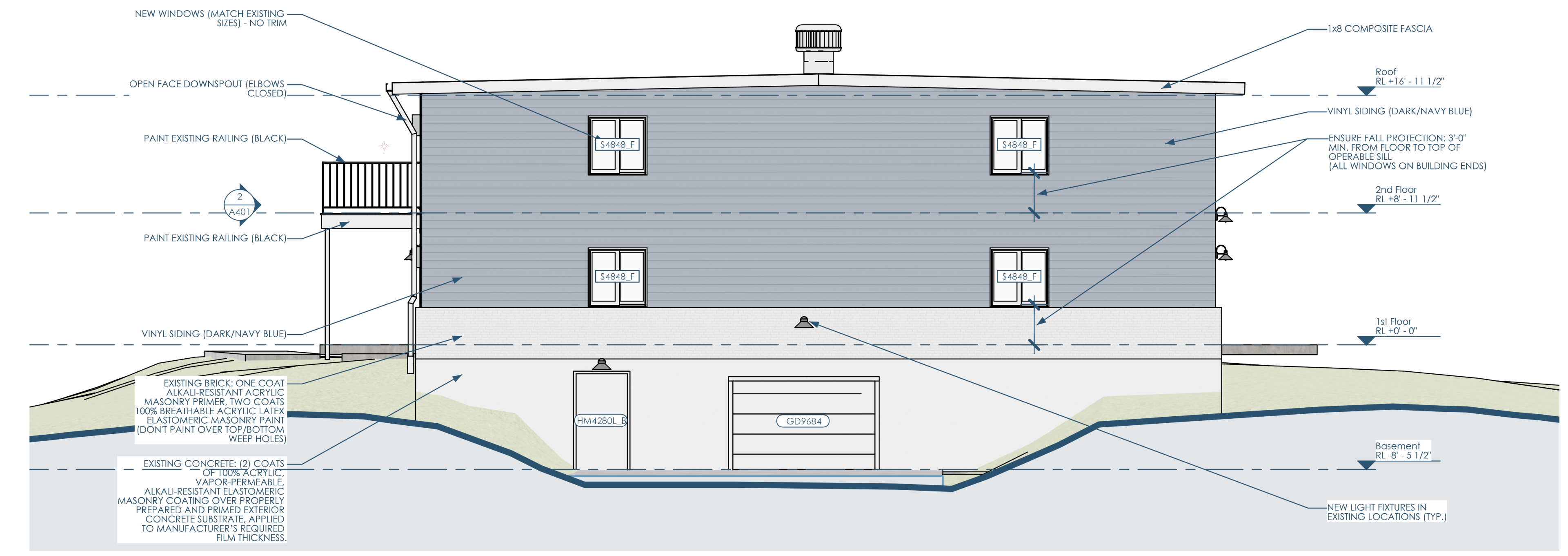
SECTIONS
 BELMAR APARTMENT HOMES - FACADE RENOVATION
 2113 RED ARROW TRAIL, FITCHBURG, WI 53711

A300

This project, like most OpeningDesign's projects, is open source (Attribution-ShareAlike 4.0 International=CC-BY-SA 4.0)=freely available to any party for future use, assuming the terms such as Attribution and ShareAlike are honored.



5B/A400 ELEVATION - NORTH
3/16"=1'-0"



3B/A400 ELEVATION - SOUTH
3/16"=1'-0"



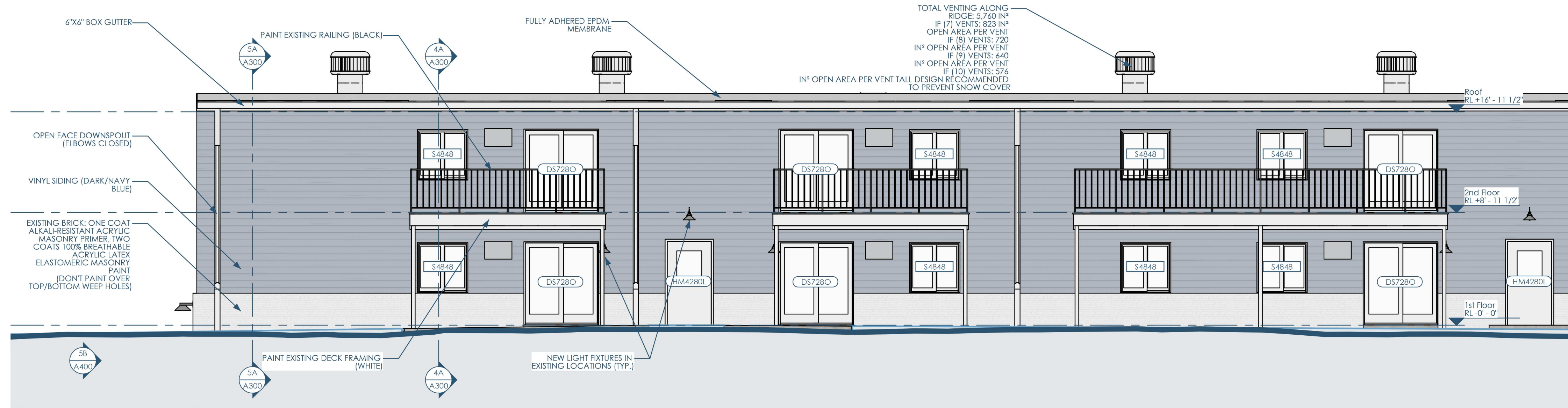
Owner: J.K. Rock, LLC
4929 Chalef Gardens Rd
Fitchburg WI 53711
josh@jrockhomes.com | 262.573.5310

Architect: OpeningDesign
17 S Fairchild | FL 7
Madison, WI 53703
ryan@openingdesign.com | 773.425.6456

ELEVATIONS
BELMAR APARTMENT HOMES - FACADE RENOVATION
2113 RED ARROW TRAIL, FITCHBURG, WI 53711

A400

This project, like most OpeningDesign's projects, is open source (Attribution-ShareAlike 4.0 International-CC-BY-SA 4.0)-freely available to any party for future use, assuming the terms such as Attribution and ShareAlike are honored.



1/A401 ELEVATION - WEST (NORTH END)
3/16"=1'-0"



2/A401 ELEVATION - WEST (SOUTH END)
3/16"=1'-0"



Owner: J.K. Rock, LLC
4929 Chalef Gardens Rd
Fitchburg WI 53711
josh@jrockhomes.com | 262.573.5310

Architect: OpeningDesign
17 S Fairchild | FL 7
Madison, WI 53703
ryan@openingdesign.com | 773.425.6456

ELEVATIONS
BELMAR APARTMENT HOMES - FACADE RENOVATION
2113 RED ARROW TRAIL, FITCHBURG, WI 53711

A401

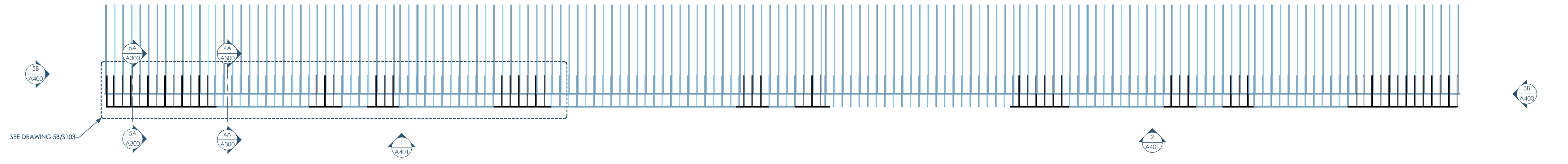
This project, like most OpeningDesign's projects, is open source. (Attribution-ShareAlike 4.0 International--CC-BY-SA 4.0)--freely available to any party for future use, assuming the terms such as Attribution and ShareAlike are honored.

5 4 3 2 1

C

C

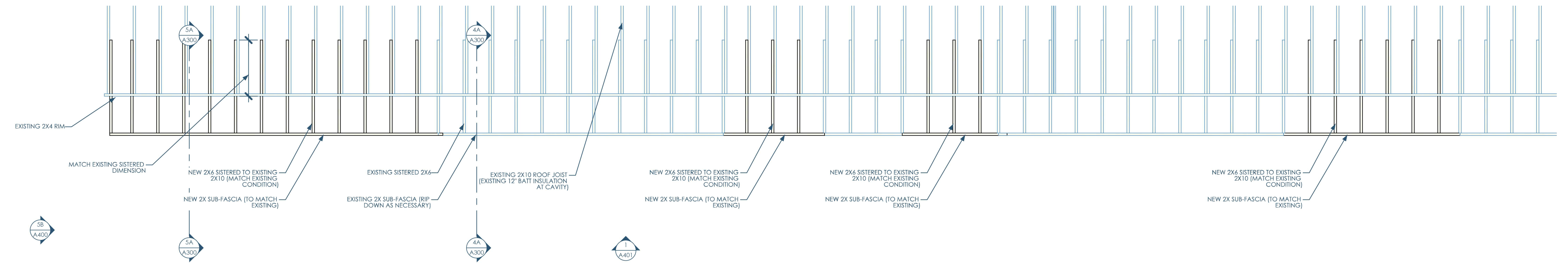
5C/S103 RCP - ROOF FRAMING
1/8"=1'-0"



B

B

5B/S103 RCP - ENLARGED PLAN - ROOF FRAMING
3/8"=1'-0"



A

A



Owner: J.K. Rock, LLC
4929 Chalef Gardens Rd
Fitchburg WI 53711
josh@jrockhomes.com | 262.573.5310

Architect: OpeningDesign
17 S Fairchild | FL 7
Madison, WI 53703
ryan@openingdesign.com | 773.425.6456

ROOF FRAMING
BELMAR APARTMENT HOMES - FACADE RENOVATION
2113 RED ARROW TRAIL, FITCHBURG, WI 53711

S103

5 4 3 2 1

This project, like most OpeningDesign's projects, is open source (Attribution-ShareAlike 4.0 International=CC-BY-SA 4.0) - freely available to any party for future use, assuming the terms such as Attribution and ShareAlike are honored.