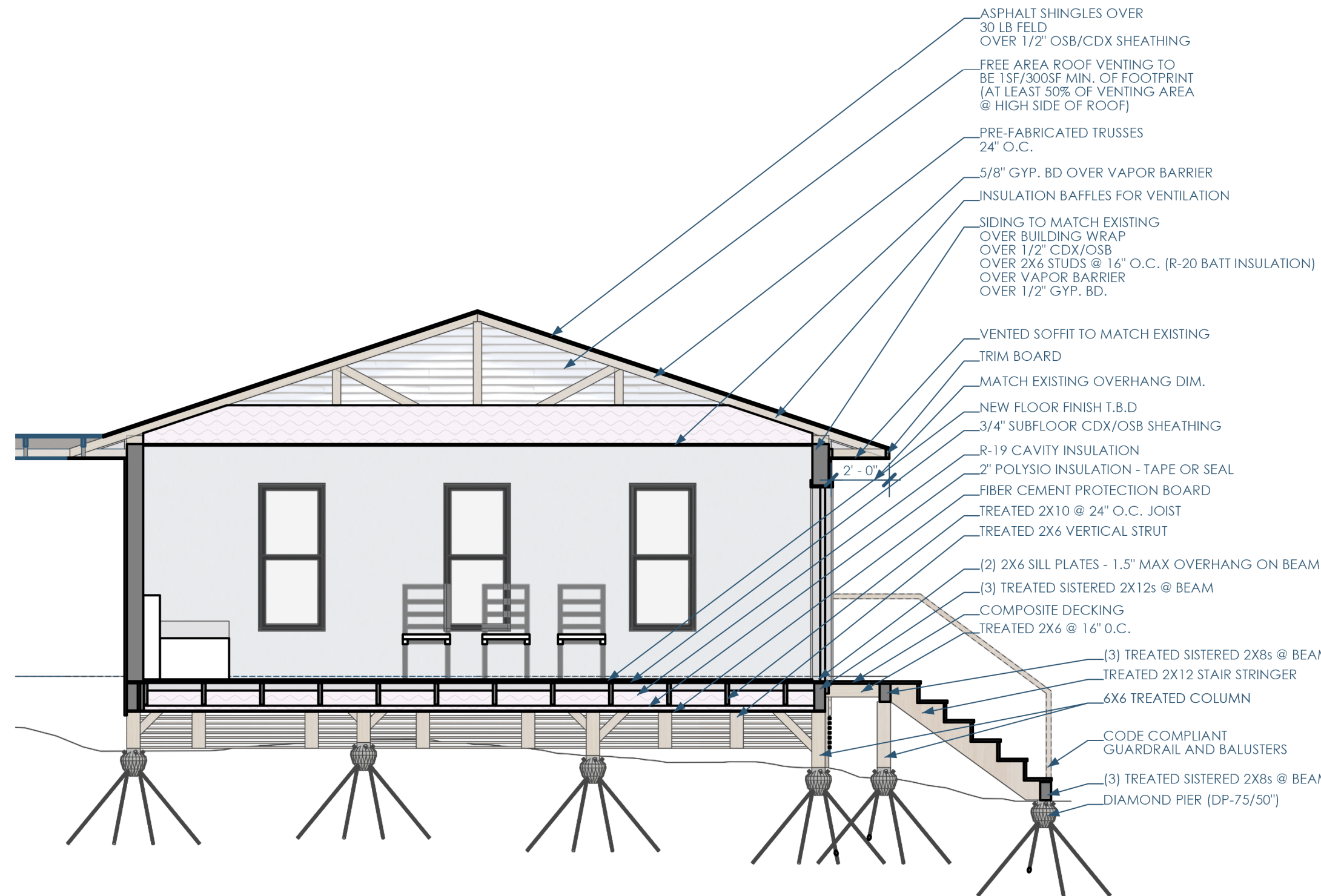
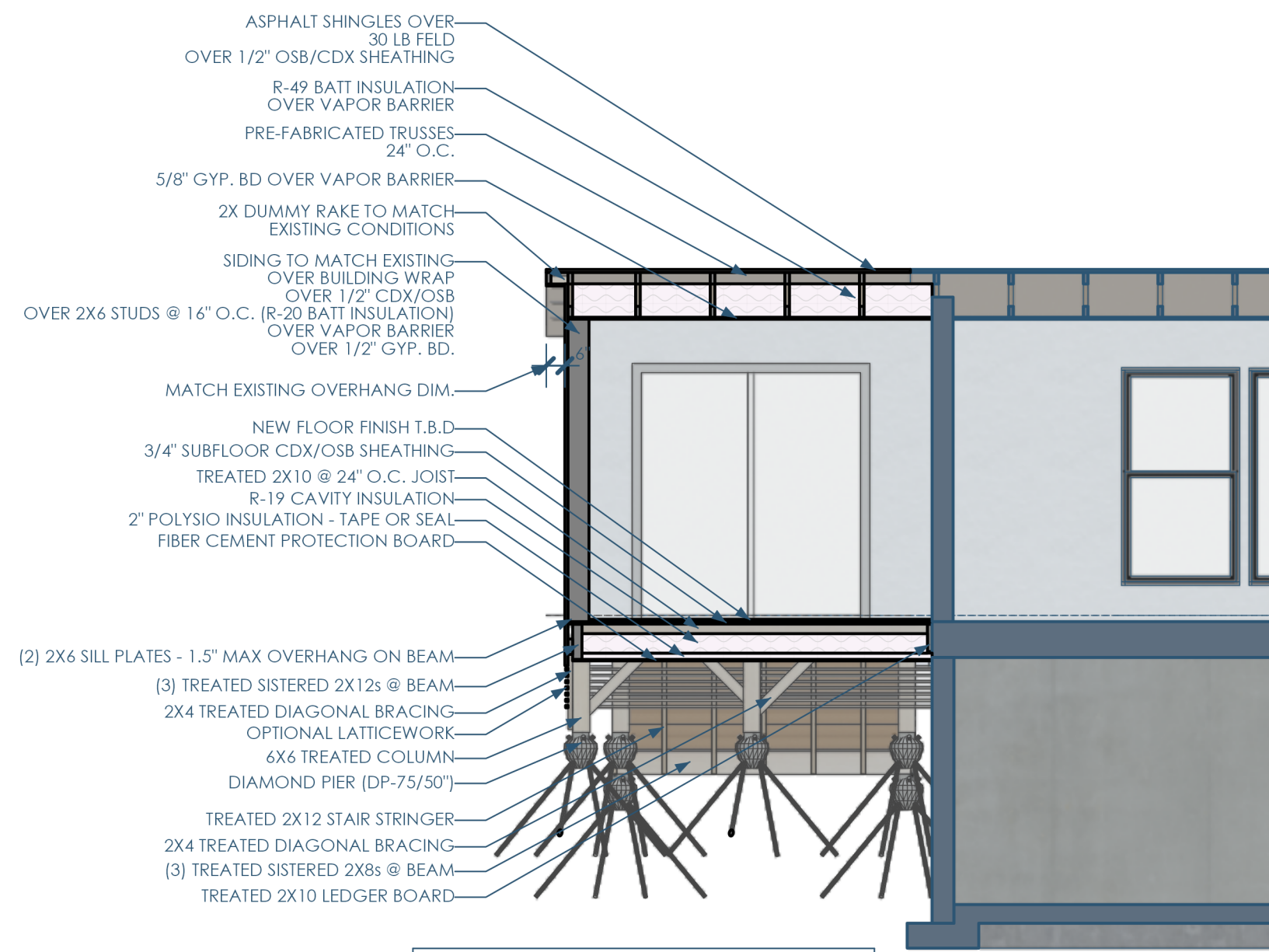


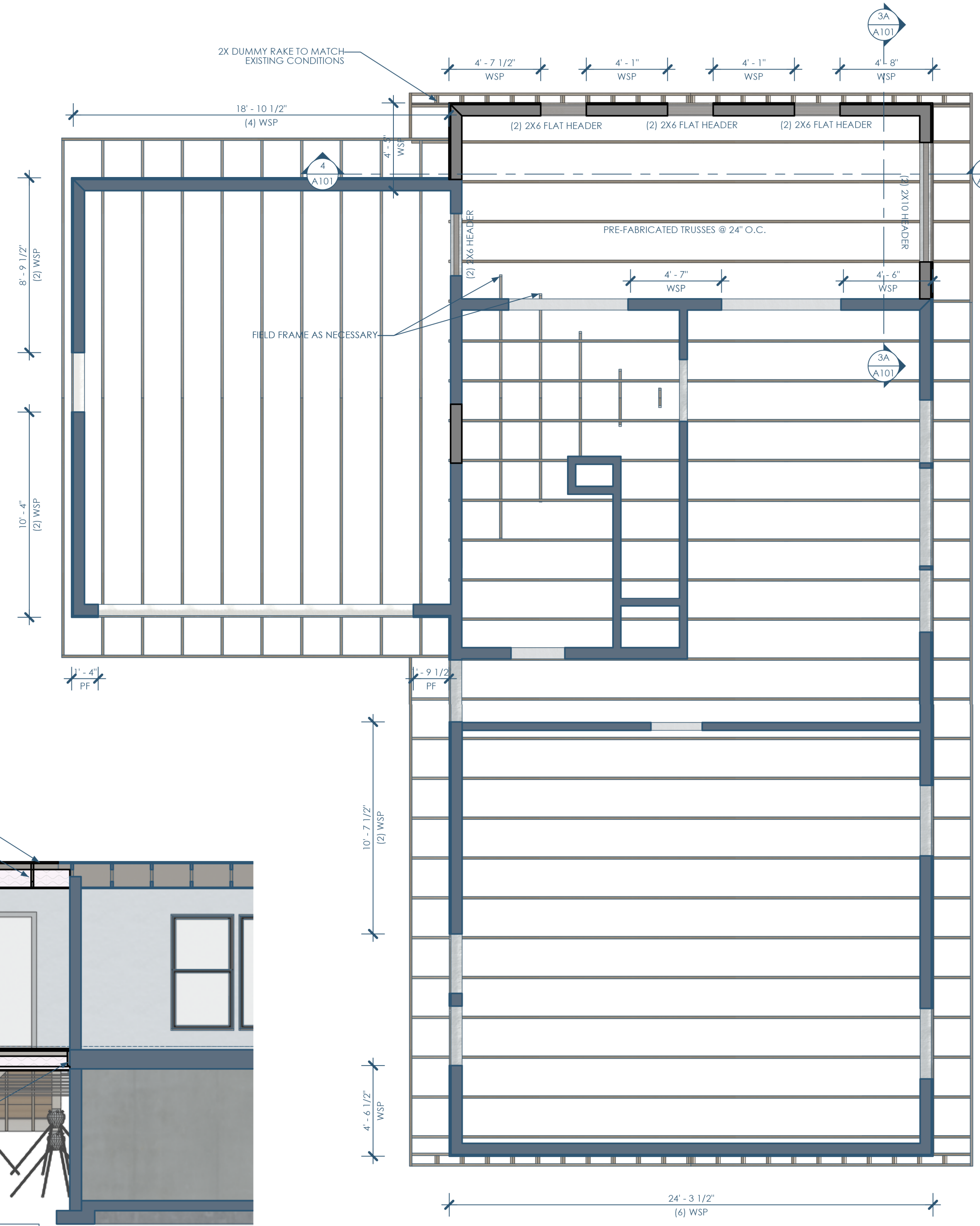
4B/A101 FLOOR PLAN - 1ST FLOOR
1/4"=1'-0"



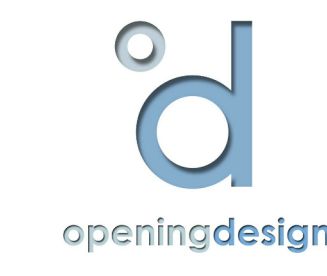
4/A101 SECTION - NORTH
1/4"=1'-0"



3A/A101 SECTION - EAST
1/4"=1'-0"



2A/A101 RCP - ROOF FRAMING
1/4"=1'-0"



GC: EXCEPTIONAL EXTERIORS
441 Glacier Moraine Dr Unit 10
Stoughton, WI 52589
exceptionalexteriors608@gmail.com | 608.354.6887

Architect: OpeningDesign
17 S Fairchild | FL 7
Madison, WI 53703
ryan@openingdesign.com | 773.425.6456

FLOOR PLAN, ROOF FRAMING PLAN, SECTIONS (NORTH & EAST) 08/26/2024

DINING ROOM ADDITION
1318 RAE LN, MADISON, WI 53711

A101

This project, like most OpeningDesign's projects, is open source (Attribution-ShareAlike 4.0 International - CC BY-SA 4.0) - freely available to any party for future use, assuming the terms such as Attribution and ShareAlike are honored.