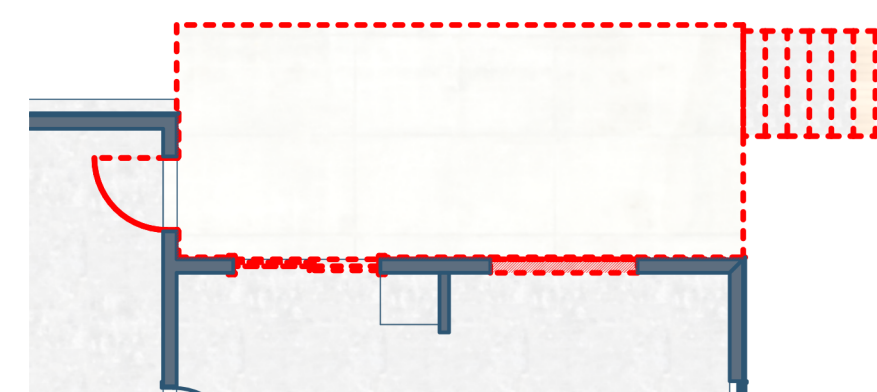
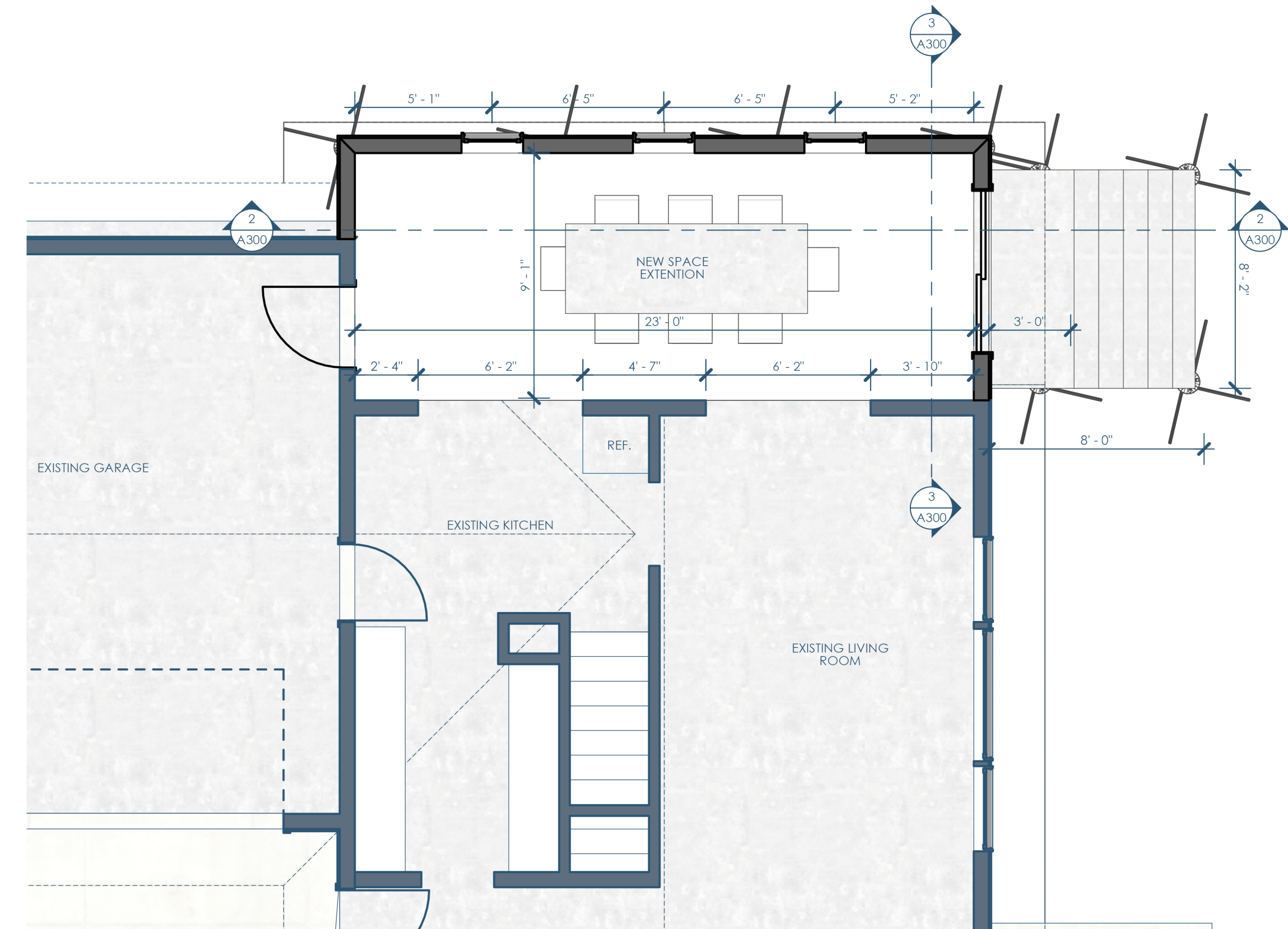


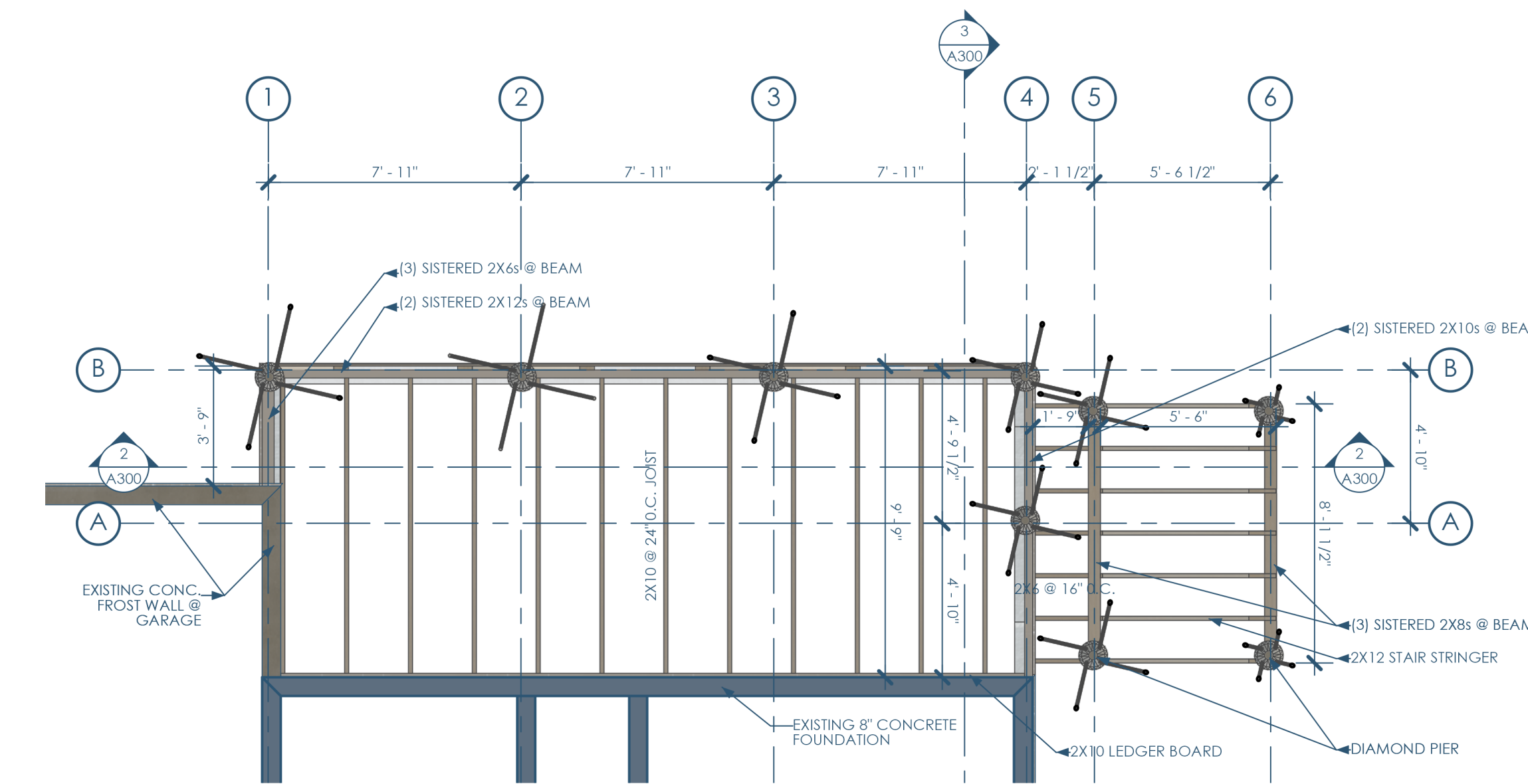
5B/A100 SITE PLAN  
1/8"=1'-0"



5A/A100 DEMO PLAN - 1ST FLOOR  
1/8"=1'-0"



3B/A100 FLOOR PLAN - 1ST FLOOR  
1/4"=1'-0"



2A/A100 FLOOR PLAN FRAMING  
1/4"=1'-0"



GC: EXCEPTIONAL EXTERIORS  
441 Glacier Moraine Dr Unit 10  
Stoughton, WI 52589

Architect: OpeningDesign  
17 S Fairchild | FL 7  
Madison, WI 53703

exceptionalexteriors608@gmail.com | 608.354.6887

ryan@openingdesign.com | 773.425.6456

FLOOR PLANS 08/01/2024  
DINING ROOM ADDITION  
1318 RAE LN, MADISON, WI 53711

A100

This project, like most OpeningDesign's projects, is open source. (Attribution-ShareAlike 4.0 International=CC-BY-SA 4.0)=freely available to any party for future use, assuming the terms such as Attribution and ShareAlike are honored.

5

4

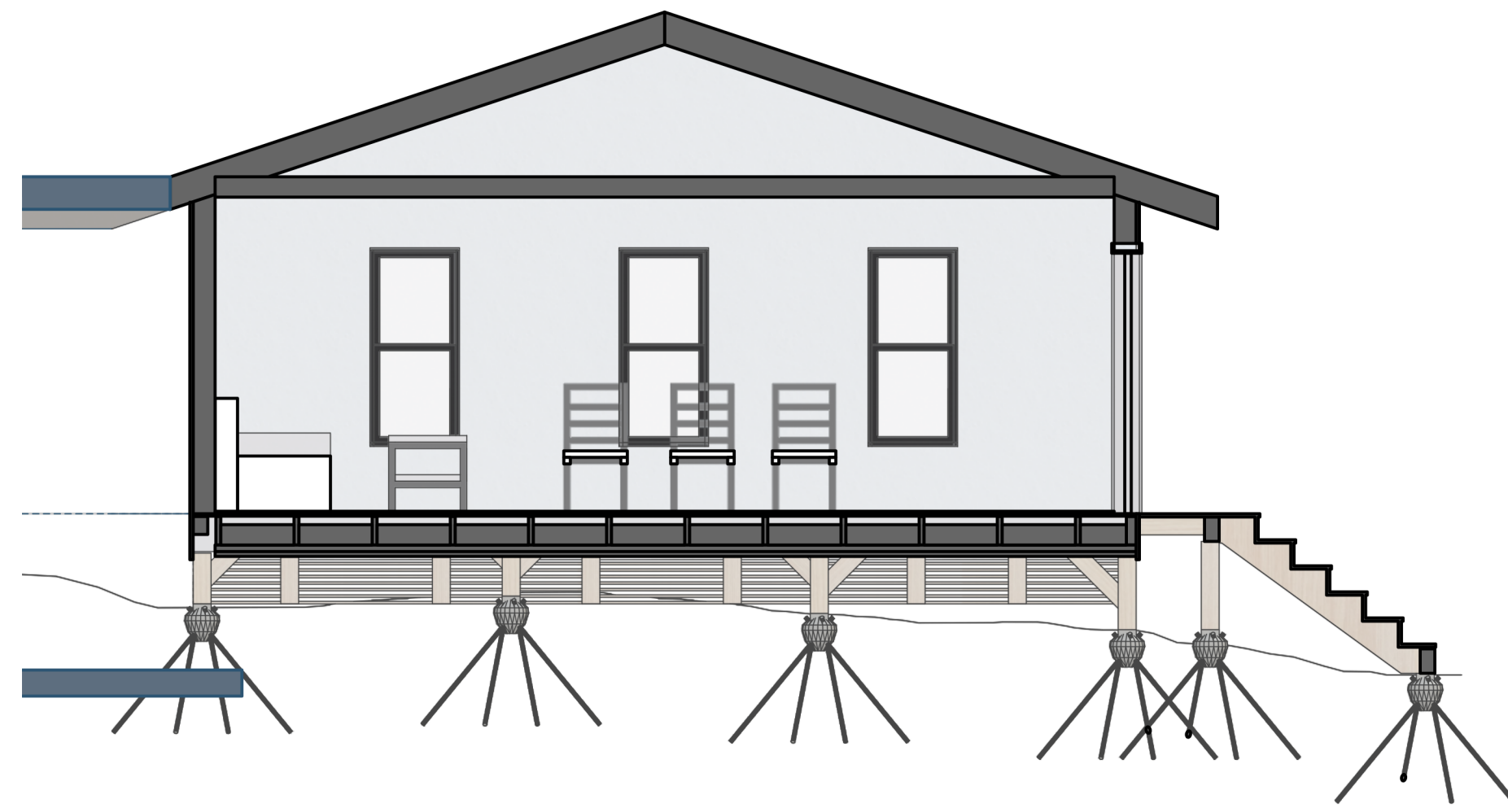
3

2

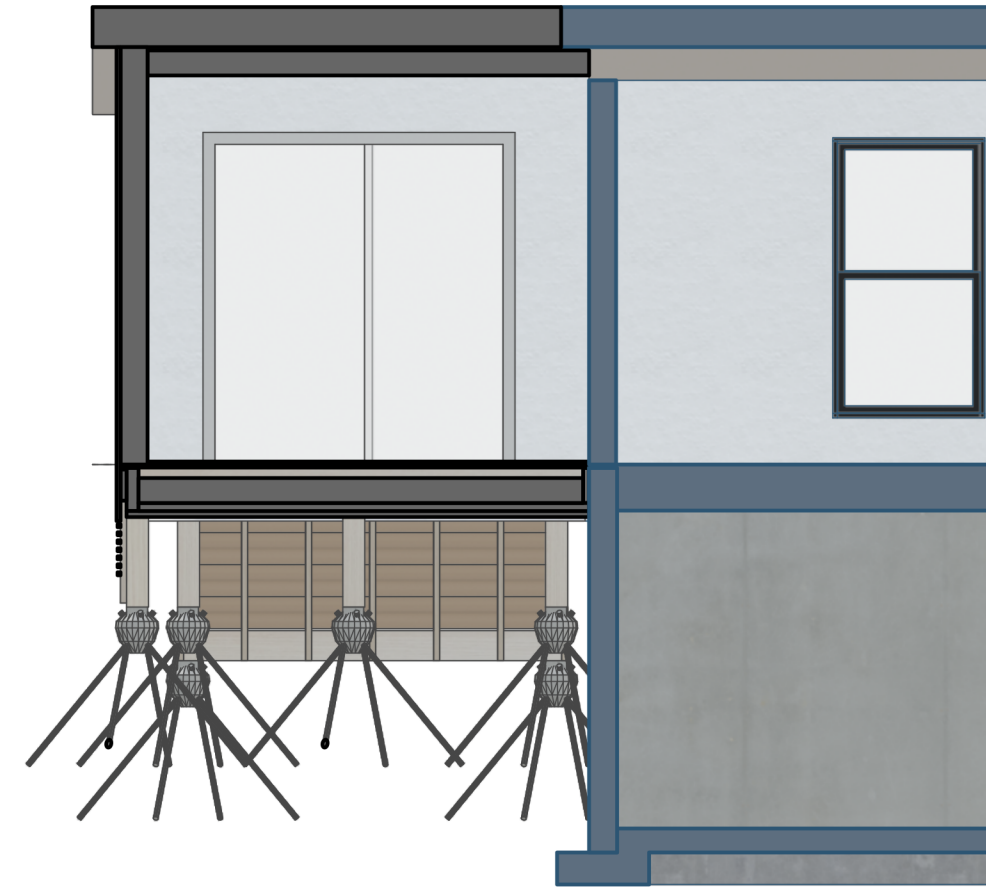
1

C

C



2/A300 SECTION - NORTH  
1/4"=1'-0"



3/A300 SECTION - EAST  
1/4"=1'-0"

B

B



2/A300 NORTH ELEVATION  
1/4"=1'-0"



4/A300 EAST ELEVATION  
1/4"=1'-0"

A

A



Exceptional Exteriors

GC: EXCEPTIONAL EXTERIORS  
441 Glacier Moraine Dr Unit 10  
Stoughton, WI 52589  
exceptionalexteriors608@gmail.com | 608.354.6887



openingdesign

Architect: OpeningDesign  
17 S Fairchild | FL 7  
Madison, WI 53703  
ryan@openingdesign.com | 773.425.6456

ELEVATIONS & SECTIONS 08/01/2024  
DINING ROOM ADDITION  
1318 RAE LN, MADISON, WI 53711

A300

5

4

3

2

1

This project, like most OpeningDesign's projects, is open source (Attribution-ShareAlike 4.0 International=CC-BY-SA 4.0)=freely available to any party for future use, assuming the terms such as Attribution and ShareAlike are honored.