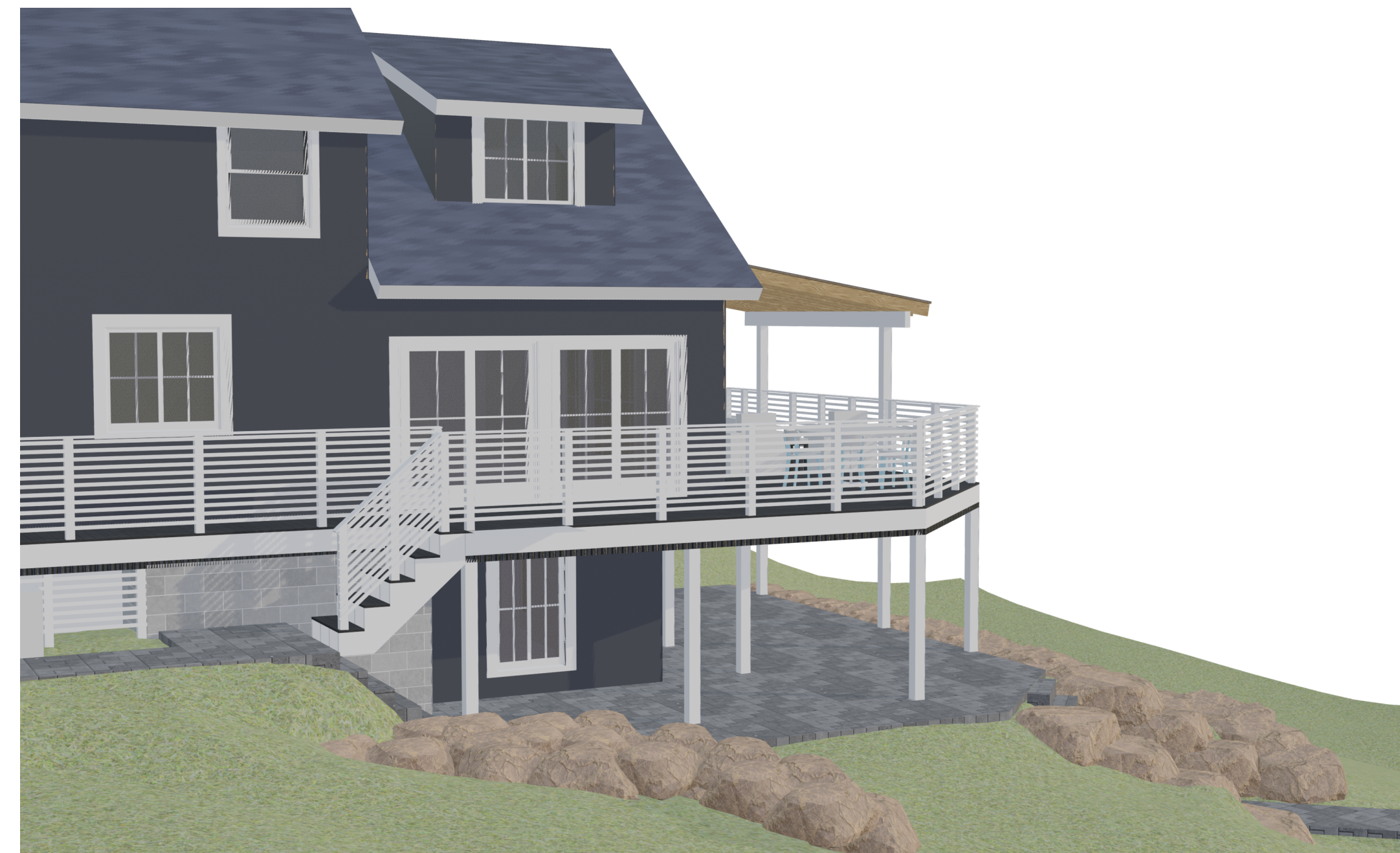
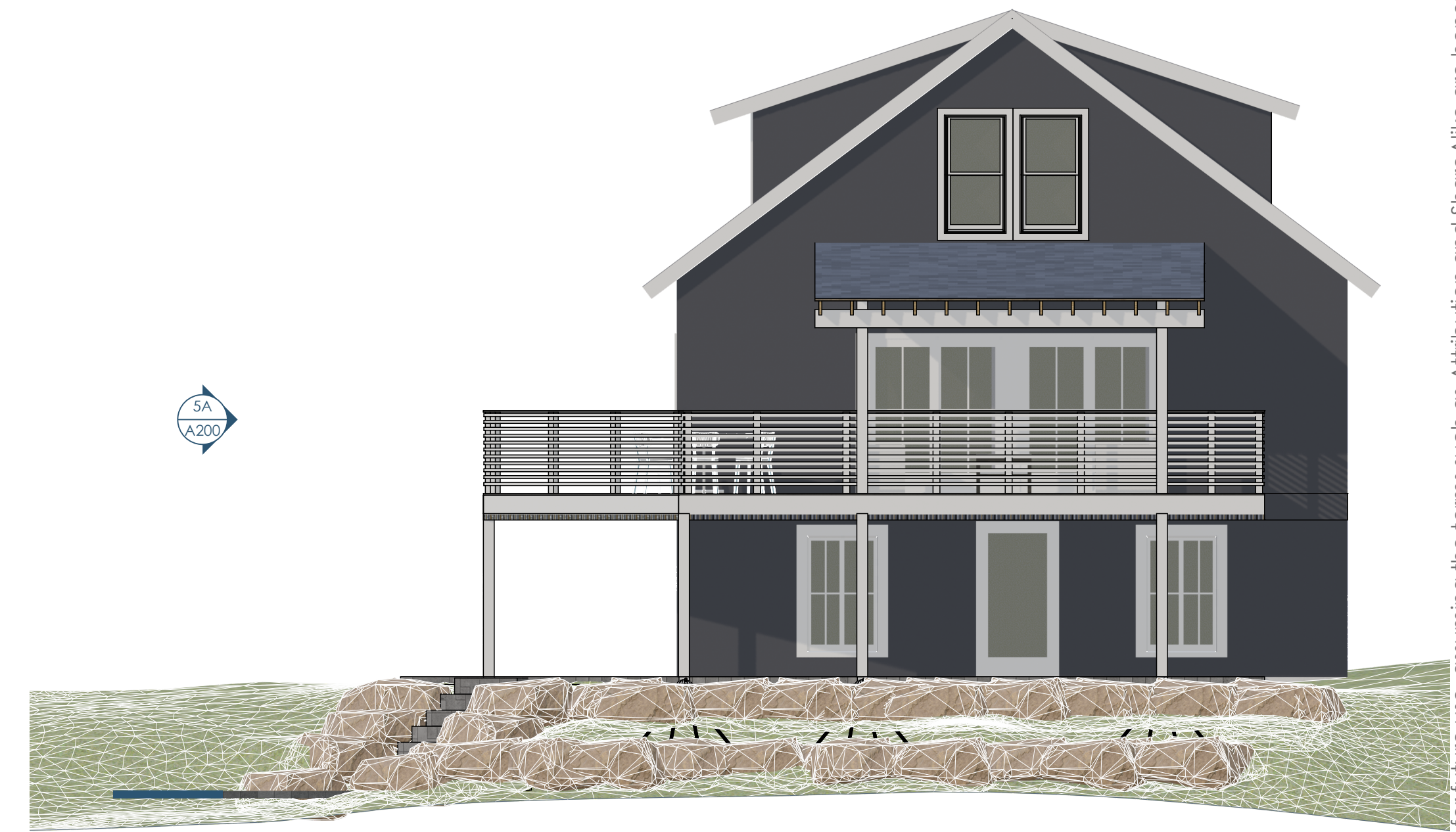


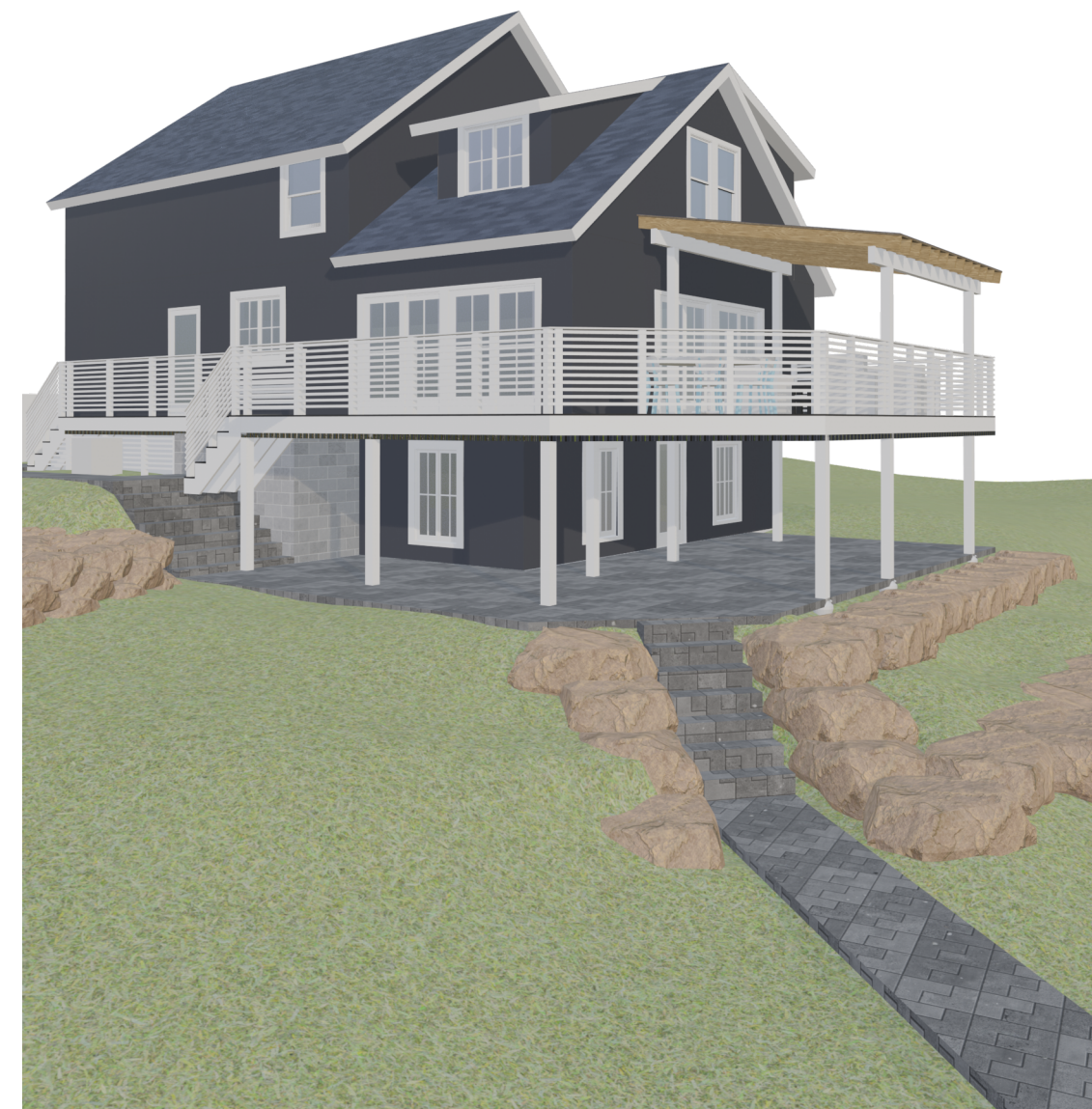
5B/A200 NORTH SECTION
3/16"=1'-0"



4B/A200 PERSPECTIVE VIEW 2



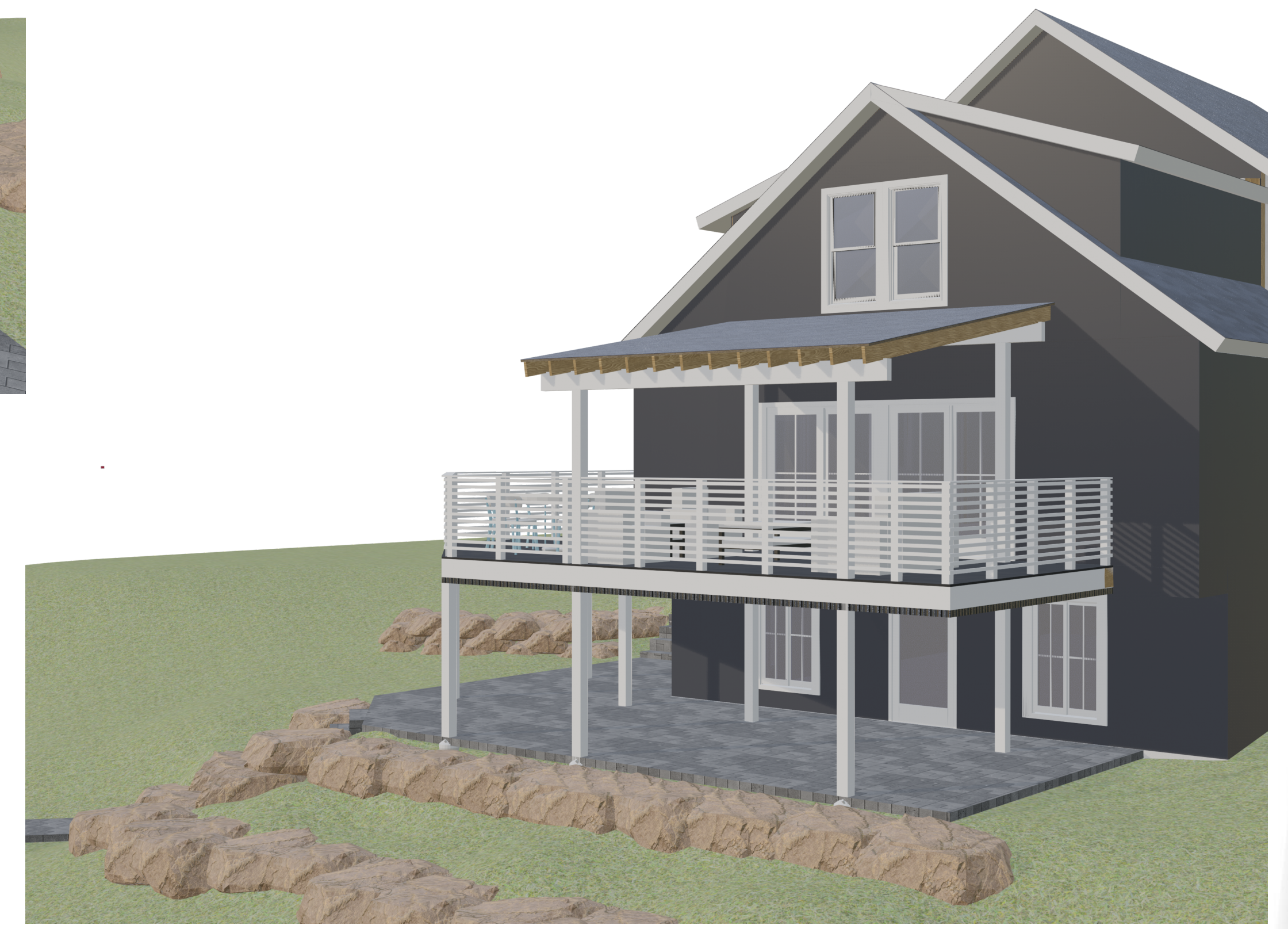
2B/A200 ELEVATION EAST
3/16"=1'-0"



3A/A200 PERSPECTIVE VIEW 1



5A/A200 ELEVATION SOUTH
3/16"=1'-0"



2A/A200 PERSPECTIVE VIEW 3

