

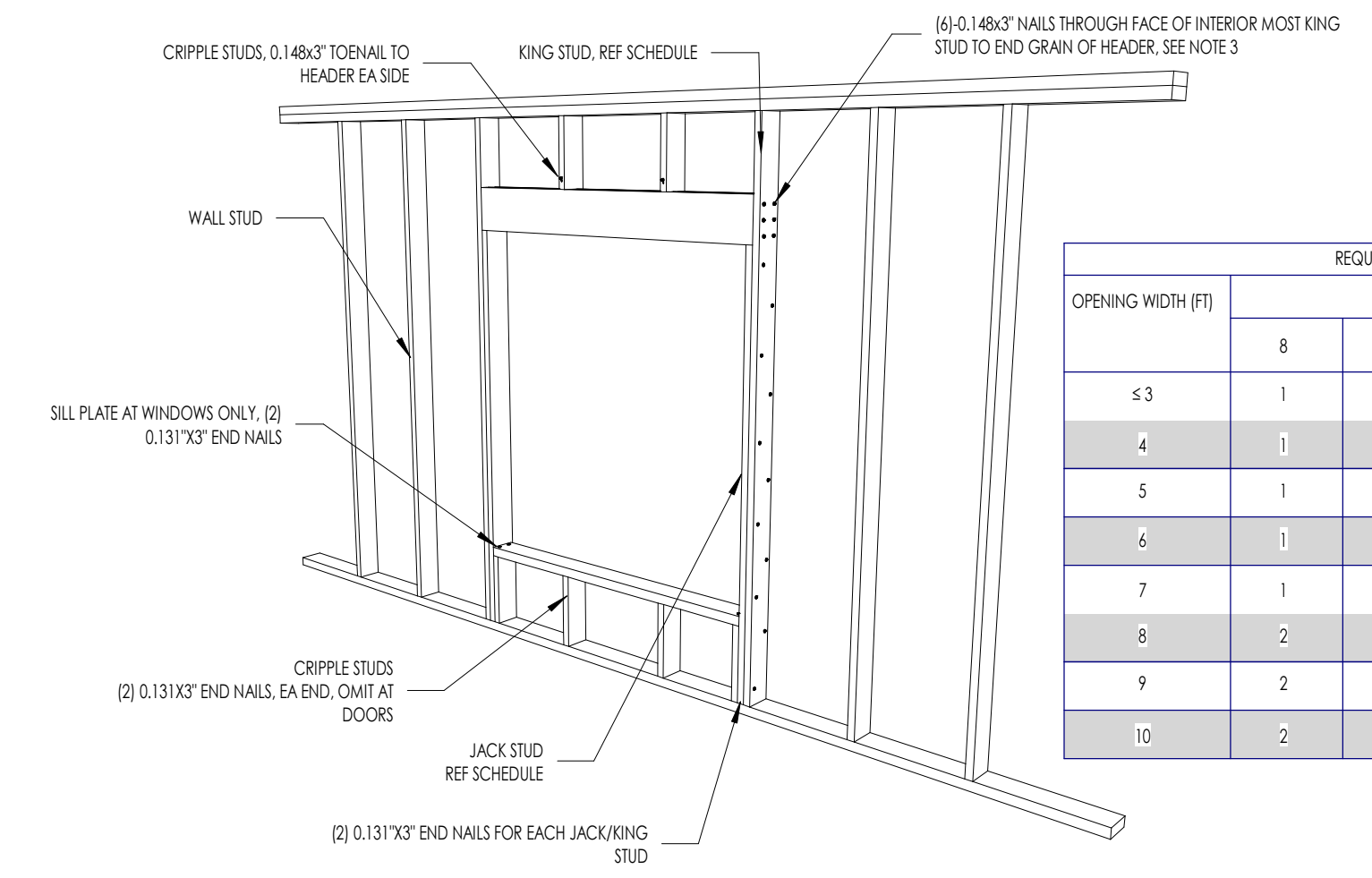
2X4 STUD WALL

OPENING WIDTH (FT)	REQUIRED NO. OF KING STUDS				NO. JACK STUDS	STRAP LAP LENGTH (IN)
	8	9	10	12		
≤3	1	1	1	2	2	1
4	1	1	2	2	2	1
5	2	2	2	3	3	1
6	2	2	3	3	3	1
7	2	2	3	3	4X6	1
8	3	3	3	4X6	4X6	2
9	3	3	4X6	4X6	4X6	2
10	3	3	4X6	4X6	4X6	2

2X6 STUD WALL

OPENING WIDTH (FT)	REQUIRED NO. OF KING STUDS				NO. JACK STUDS	STRAP LAP LENGTH (IN)
	8	9	10	12		
≤3	1	1	1	1	1	1
4	1	1	1	1	1	1
5	1	1	1	1	2	1
6	1	1	1	2	2	1
7	1	1	2	2	2	1
8	1	1	2	2	2	2
9	1	2	2	2	2	2
10	1	2	2	2	3	2

NOTES:
1. MULTIPLE PLYS MUST BE ATTACHED PER THE MECHANICALLY LAMINATED BUILT-UP COLUMN, NAIL DETAIL.
2. TABLE IS BASED OFF A HORIZONTAL WIND PRESSURE OF 20 PSF AND GRAVITY LOADING OF 200 PLF.
3. NAILS MUST BE CENTERED ON THE INDIVIDUAL PLYS OF THE HEADERS.
4. N/R = NOT REQUIRED. IF N/R, THEN REFERENCE NARROW OPENING DIAGRAM FOR CONNECTION REQUIREMENTS, OTHERWISE REFERENCE THE WIDE OPENING DIAGRAM.



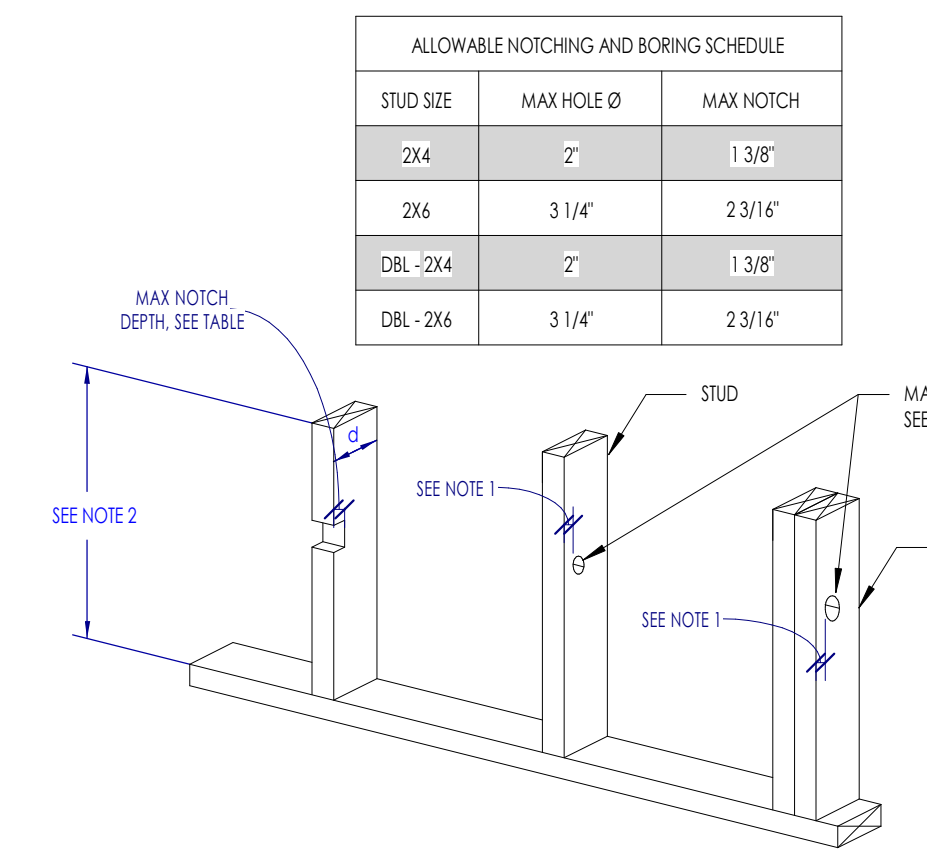
LOAD BEARING WALL

OPENING WIDTH (FT)	REQUIRED NO. OF KING STUDS				NO. JACK STUDS
	8	9	10	12	
≤3	1	1	1	1	1
4	1	1	1	1	1
5	1	1	1	2	2
6	1	1	2	2	2
7	1	1	2	2	3
8	2	2	2	3	3
9	2	2	3	3	3
10	2	2	3	3	3

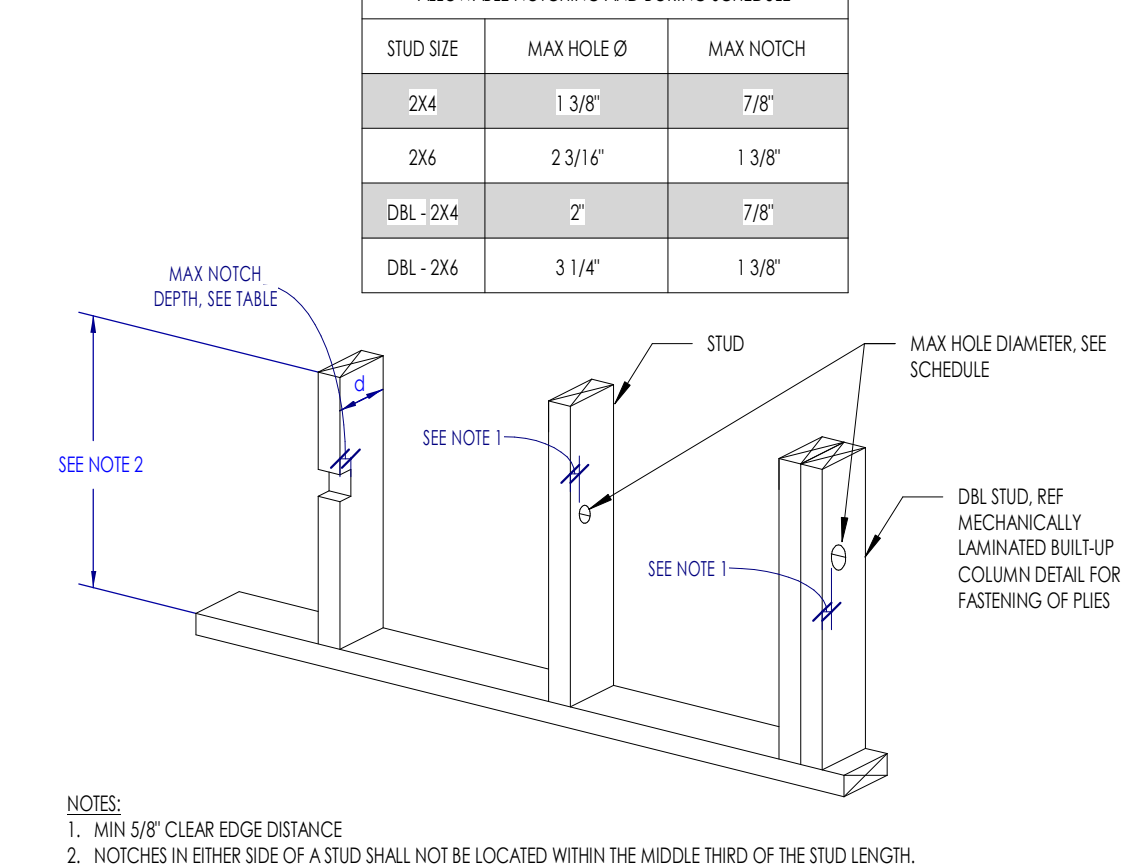
NON-LOAD BEARING WALL

OPENING WIDTH (FT)	REQUIRED NO. OF KING STUDS				NO. JACK STUDS	HEADER SIZE
	8	9	10	12		
≤3	1	1	1	1	1	2X4 STUD WALL, 2X6 STUD WALL
4	1	1	1	1	1	2X4 STUD WALL, 2X6 STUD WALL
5	1	1	1	2	2	2X4 STUD WALL, 2X6 STUD WALL
6	1	1	2	2	2	2X4 STUD WALL, 2X6 STUD WALL
7	1	1	2	2	3	2X4 STUD WALL, 2X6 STUD WALL
8	2	2	2	3	3	2X4 STUD WALL, 2X6 STUD WALL
9	2	2	3	3	3	2X4 STUD WALL, 2X6 STUD WALL
10	2	2	3	3	3	2X4 STUD WALL, 2X6 STUD WALL

NOTES:
1. LOAD BEARING WALLS AND ASSOCIATED HEADERS ARE INDICATED ON PLAN.



NOTES:
1. MIN 5/8" CLEAR EDGE DISTANCE.
2. NOTCHES IN EITHER SIDE OF A STUD SHALL NOT BE LOCATED WITHIN THE MIDDLE THIRD OF THE STUD LENGTH.
3. NOTCHES AND BORINGS SHALL NOT OCCUR IN THE SAME CROSS SECTION.

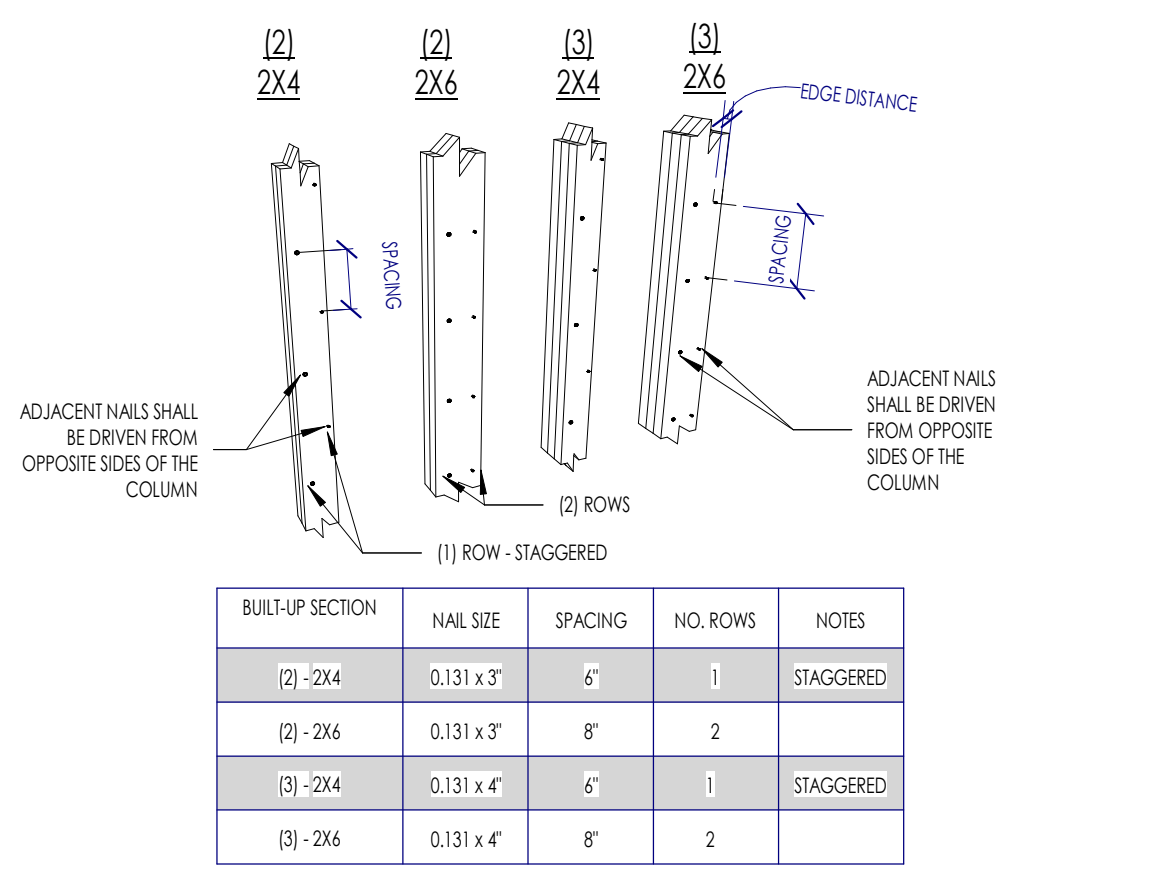


NOTES:
1. MIN 5/8" CLEAR EDGE DISTANCE.
2. NOTCHES IN EITHER SIDE OF A STUD SHALL NOT BE LOCATED WITHIN THE MIDDLE THIRD OF THE STUD LENGTH.
3. NOTCHES AND BORINGS SHALL NOT OCCUR IN THE SAME CROSS SECTION.

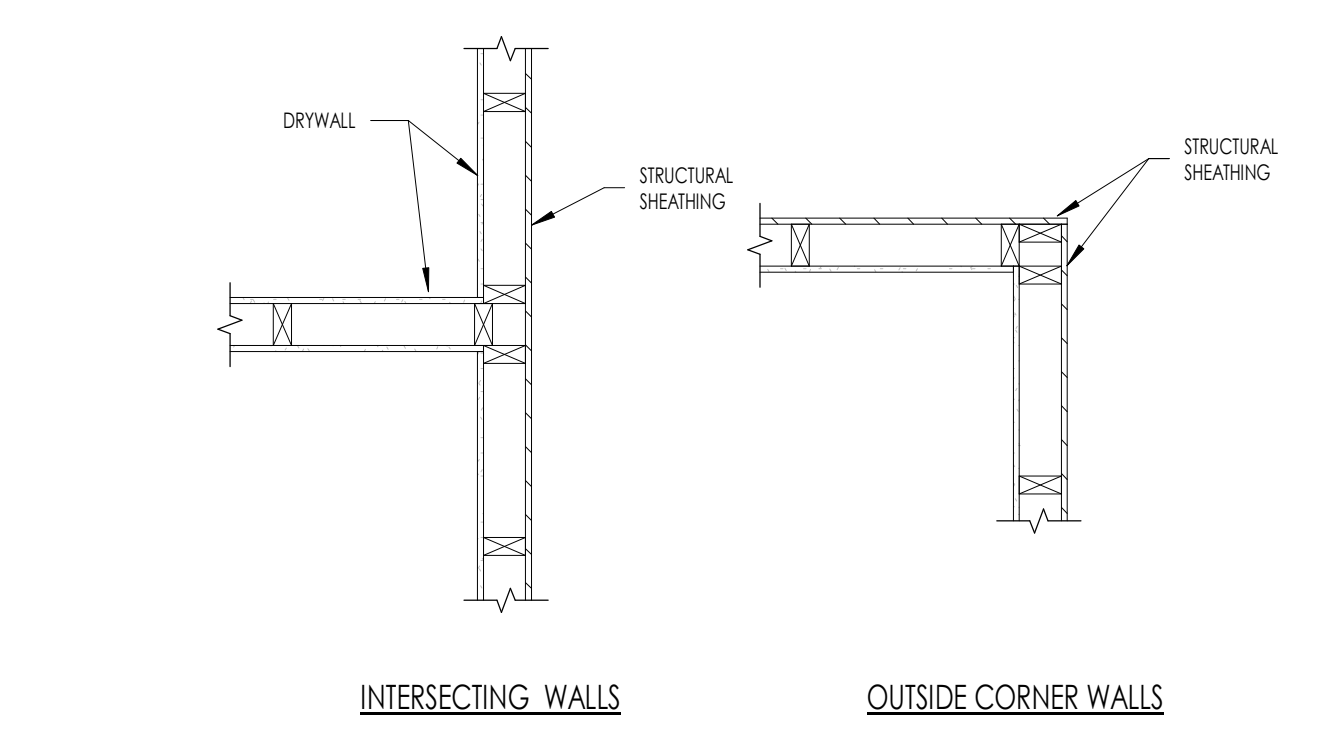
5B TYPICAL INTERIOR OPENING FRAMING

2B ALLOWABLE STUD NOTCHING AND BORING IN INTERIOR NON-LOAD BEARING WALLS

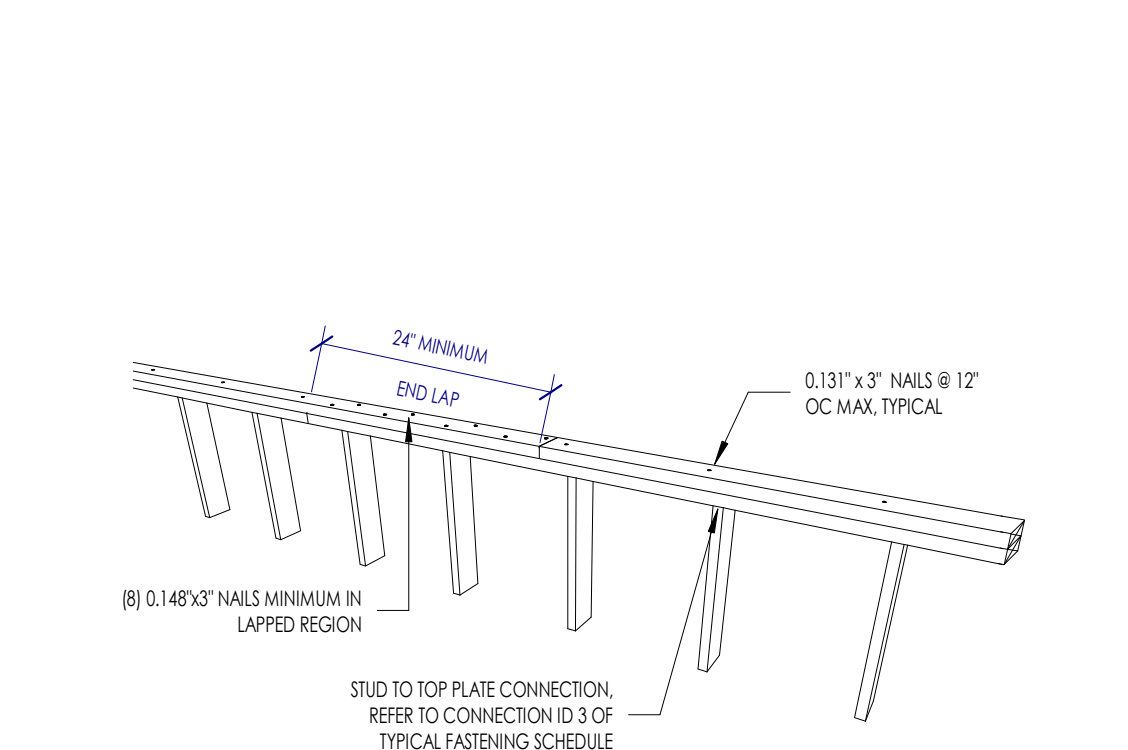
1B ALLOWABLE STUD NOTCHING AND BORING IN EXTERIOR & LOAD BEARING WALLS



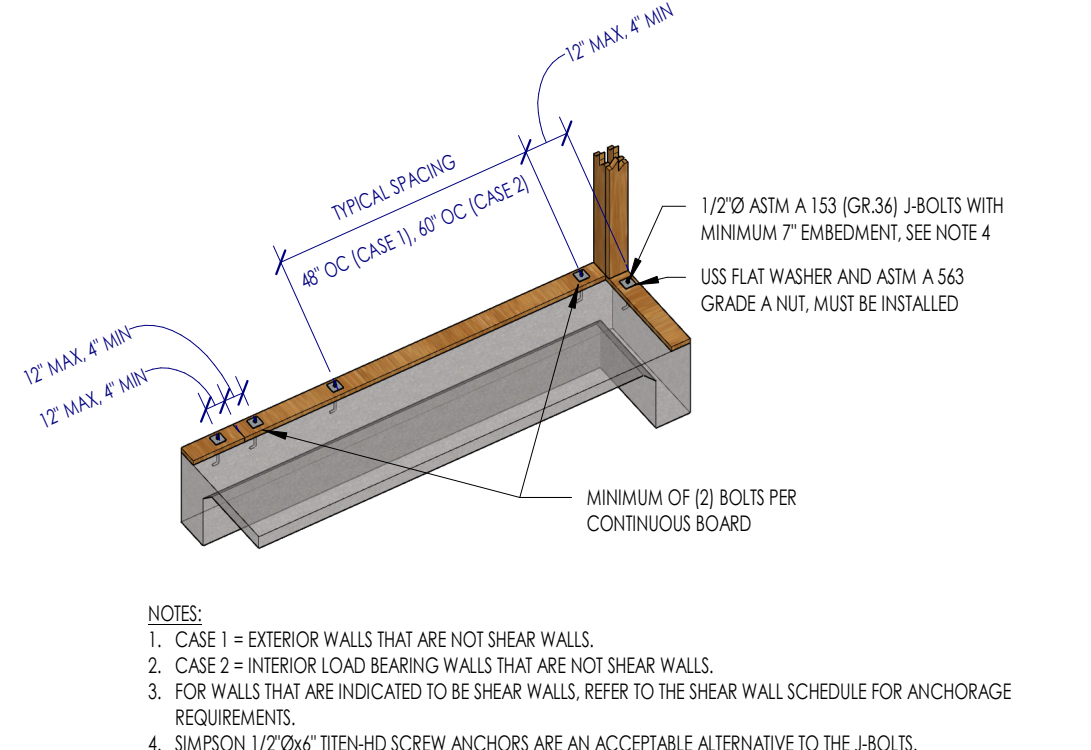
5A TYPICAL STRAP AT WIDE EXTERIOR OPENINGS



4A TYPICAL CORNER AND INTERSECTION WALL STUDS (NOT AT SHEAR WALL)



3A TYPICAL LOAD BEARING / SHEAR WALL DOUBLE TOP PLATE SPLICE



2A TYPICAL BOTTOM PLATE ANCHORAGE

6A MECHANICALLY LAMINATED BUILT-UP COLUMN (STUD PACK) - NAIED

5A TYPICAL STRAP AT WIDE EXTERIOR OPENINGS

4A TYPICAL CORNER AND INTERSECTION WALL STUDS (NOT AT SHEAR WALL)

3A TYPICAL LOAD BEARING / SHEAR WALL DOUBLE TOP PLATE SPLICE

2A TYPICAL BOTTOM PLATE ANCHORAGE

TYPICAL WOOD FRAMING WALL DETAILS

This project, like most OpeningDesign's projects, is open source (Attribution-ShareAlike 4.0 International-CC BY-SA 4.0)—freely available to any party for future use, assuming the terms such as Attribution and ShareAlike are honored.