

PARTITION TAG NOMENCLATURE

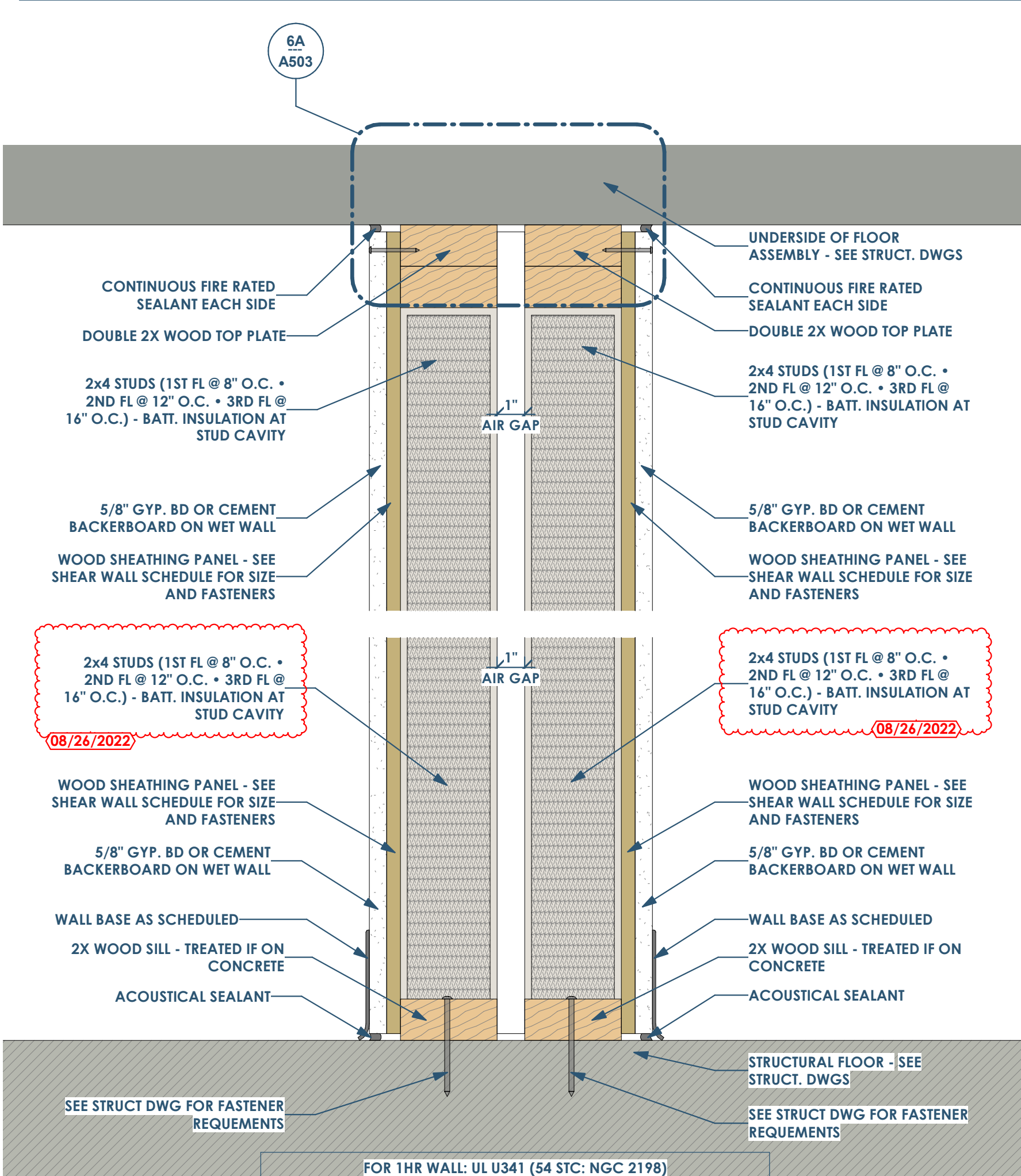
- 1ST LETTER = CORE MATERIAL
 - W= WOOD
 - M=METAL
 - C=CONCRETE
 - B=MASONRY BLOCK
- 2ND LETTER = SIZE OF CORE
 - WOOD: NOMINAL STUD SIZES (EX: 4 = 3 1/2")
 - METAL STUD: (EX 358 = 3 5/8")
 - CONCRETE: ACTUAL WALL THICKNESS (EX: 8 = 8")
 - MASONRY: NOMINAL BRICK MODULES (EX: 8 = 7 5/8")
- 3RD LETTER = LAYER MATERIAL

TAG	LAYER MATERIAL (3RD LETTER)							IF FIRE RATED - UL NUMBER
	LAYER 3	LAYER 2	LAYER 1	CORE	LAYER 1	LAYER 2	LAYER 3	
A=	-	-	5/8" GYP. BD OR CEMENT BACKERBOARD ON WET WALL	STUDS 16" O.C. (20 GA. IF METAL)	5/8" GYP. BD OR CEMENT BACKERBOARD ON WET WALL	-	-	UL U305
B=	-	-	5/8" GYP. BD OR CEMENT BACKERBOARD ON WET WALL	STUDS 16" O.C. (20 GA. IF METAL) BATT INSULATION	5/8" GYP. BD OR CEMENT BACKERBOARD ON WET WALL	-	-	UL U305
C=	-	-	5/8" GYP. BD OR CEMENT BACKERBOARD ON WET WALL	STUDS 16" O.C. (20 GA. IF METAL)	(PROVIDE 1/4" AIR GAP IF AGAINST CONCRETE OR MASONRY)	-	-	-
D=	-	-	5/8" GYP. BD OR CEMENT BACKERBOARD ON WET WALL	STUDS 16" O.C. (20 GA. IF METAL) BATT INSULATION	(PROVIDE 1/4" AIR GAP IF AGAINST CONCRETE OR MASONRY) - USE TREATED WOOD STUDS IF IN CONTACT WITH CONCRETE/MASONRY	-	-	-
G=	-	-	5/8" GYP. BD OR CEMENT BACKERBOARD ON WET WALL	SEE WALL STUD SCHEDULE - STRUCT. DWGS. - W/(R-19) BATT INSULATION	1" AIR GAP (PART OF A DOUBLE STUD WALL)	-	-	UL 341
H=	-	5/8" GYP. BD OR CEMENT BACKERBOARD ON WET WALL	SHEATHING - SEE STRUCT. DWGS	SEE WALL STUD SCHEDULE - STRUCT. DWGS. - W/(R-19) BATT INSULATION	1" AIR GAP (PART OF A DOUBLE STUD WALL)	-	-	UL 341
Q=	FIBER CEMENT - CLAPBOARD SIDING	DRAINAGE WRAP - ASTM 2273	SHEATHING - SEE STRUCT. DWGS	SEE WALL STUD SCHEDULE - STRUCT. DWGS. - W/(R-19) BATT INSULATION	5/8" GYP. BD OR CEMENT BACKERBOARD ON WET WALL	-	-	-
R=	FIBER CEMENT - BATTEN AND BOARD SIDING	DRAINAGE WRAP - ASTM 2273	SHEATHING - SEE STRUCT. DWGS	SEE WALL STUD SCHEDULE - STRUCT. DWGS. - W/(R-19) BATT INSULATION	5/8" GYP. BD OR CEMENT BACKERBOARD ON WET WALL & SHEATHING LAYER, IF AT PARTY WALL (SEE STRUCT DWGS)	-	-	-
S=	7/8" CORRUGATED METAL SIDING	DRAINAGE WRAP - ASTM 2273	SHEATHING - SEE STRUCT. DWGS	SEE WALL STUD SCHEDULE - STRUCT. DWGS. - W/(R-19) BATT INSULATION	5/8" GYP. BD OR CEMENT BACKERBOARD ON WET WALL & SHEATHING LAYER, IF AT PARTY WALL (SEE STRUCT DWGS)	-	-	-
T=	FIBER CEMENT - CLAPBOARD SIDING	DRAINAGE WRAP - ASTM 2273	5/8" FIBERGLASS MAT GYPSUM SHEATHING	SEE WALL STUD SCHEDULE - STRUCT. DWGS. - W/(R-19) BATT INSULATION	5/8" GYP. BD OR CEMENT BACKERBOARD ON WET WALL & SHEATHING LAYER, IF AT PARTY WALL (SEE STRUCT DWGS)	-	-	UL U305
U=	FIBER CEMENT - BATTEN AND BOARD SIDING	DRAINAGE WRAP - ASTM 2273	5/8" FIBERGLASS MAT GYPSUM SHEATHING	SEE WALL STUD SCHEDULE - STRUCT. DWGS. - W/(R-19) BATT INSULATION	5/8" GYP. BD OR CEMENT BACKERBOARD ON WET WALL & SHEATHING LAYER, IF AT PARTY WALL (SEE STRUCT DWGS)	-	-	UL U305
V=	7/8" CORRUGATED METAL SIDING	DRAINAGE WRAP - ASTM 2273	5/8" FIBERGLASS MAT GYPSUM SHEATHING	SEE WALL STUD SCHEDULE - STRUCT. DWGS. - W/(R-19) BATT INSULATION	5/8" GYP. BD OR CEMENT BACKERBOARD ON WET WALL & SHEATHING LAYER, IF AT PARTY WALL (SEE STRUCT DWGS)	-	-	UL U305
W=	7/8" CORRUGATED METAL SIDING	DRAINAGE WRAP - ASTM 2273	SHEATHING - SEE STRUCT. DWGS	SEE WALL STUD SCHEDULE - STRUCT. DWGS. - W/(R-19) BATT INSULATION	SHEATHING - SEE STRUCT. DWGS	DRAINAGE WRAP - ASTM 2273	7/8" CORRUGATED METAL SIDING	-
X=	7/8" CORRUGATED METAL SIDING	DRAINAGE WRAP - ASTM 2273	5/8" FIBERGLASS MAT GYPSUM SHEATHING	SEE WALL STUD SCHEDULE - STRUCT. DWGS. - W/(R-19) BATT INSULATION	5/8" FIBERGLASS MAT GYPSUM SHEATHING	DRAINAGE WRAP - ASTM 2273	7/8" CORRUGATED METAL SIDING	UL U305
Z=	-	-	16 GA PERFORATED GALV. STEEL	2.5" 12GA. STRUCTURAL METAL STUD - C/P90 GALV.	-	-	-	-

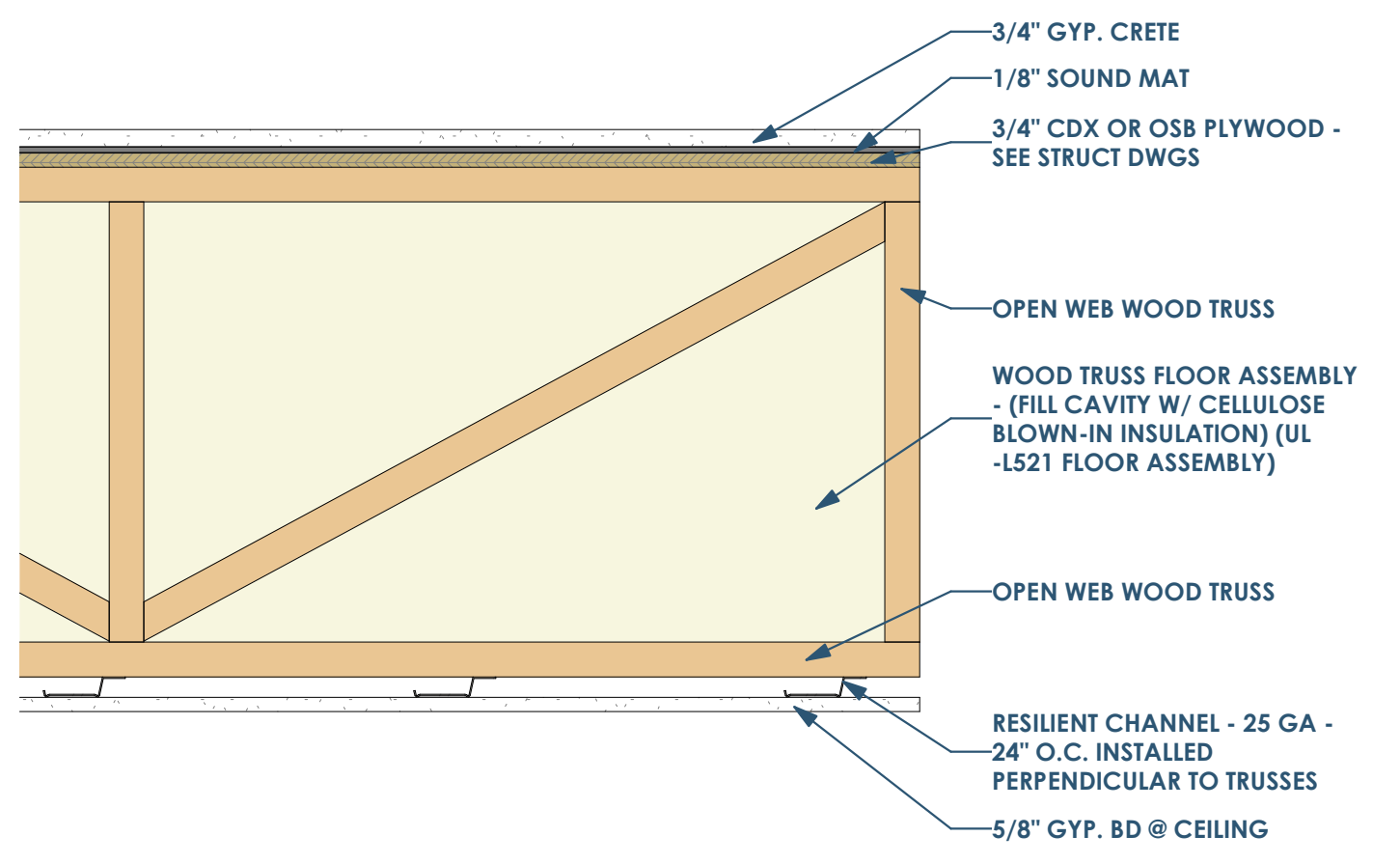
- 4TH NUMBER: FIRE RATING
 - 0=0 HOUR
 - 1=1 HOUR
 - 2=2 HOUR
 - 3=3 HOUR
 - 5=5 HOUR

- 5TH (AND BEYOND) LETTERS = MODIFIERS
 - A=PARTIAL HEIGHT PARTITION (WALL LAYER 1, 2, & 3 TO EXTEND 4" ABOVE FINISHED CEILING HEIGHT)
 - B=PARTIAL HEIGHT WALL (WALL LAYER 1, 2, & 3 TO TERMINATE AT OR BELOW HUNG CEILING)
 - D=FULL HEIGHT TO UNDERSIDE OF STRUCTURAL DECK/SHEATHING (CORE AND WALL LAYER 1, 2, & 3 TO TERMINATE AT STRUCTURAL DECK)
 - F=FULL HEIGHT TO THE BOTTOM OF STRUCTURE
 - K=KNEE WALL PARTITION
 - R=FURRED OUT WALL

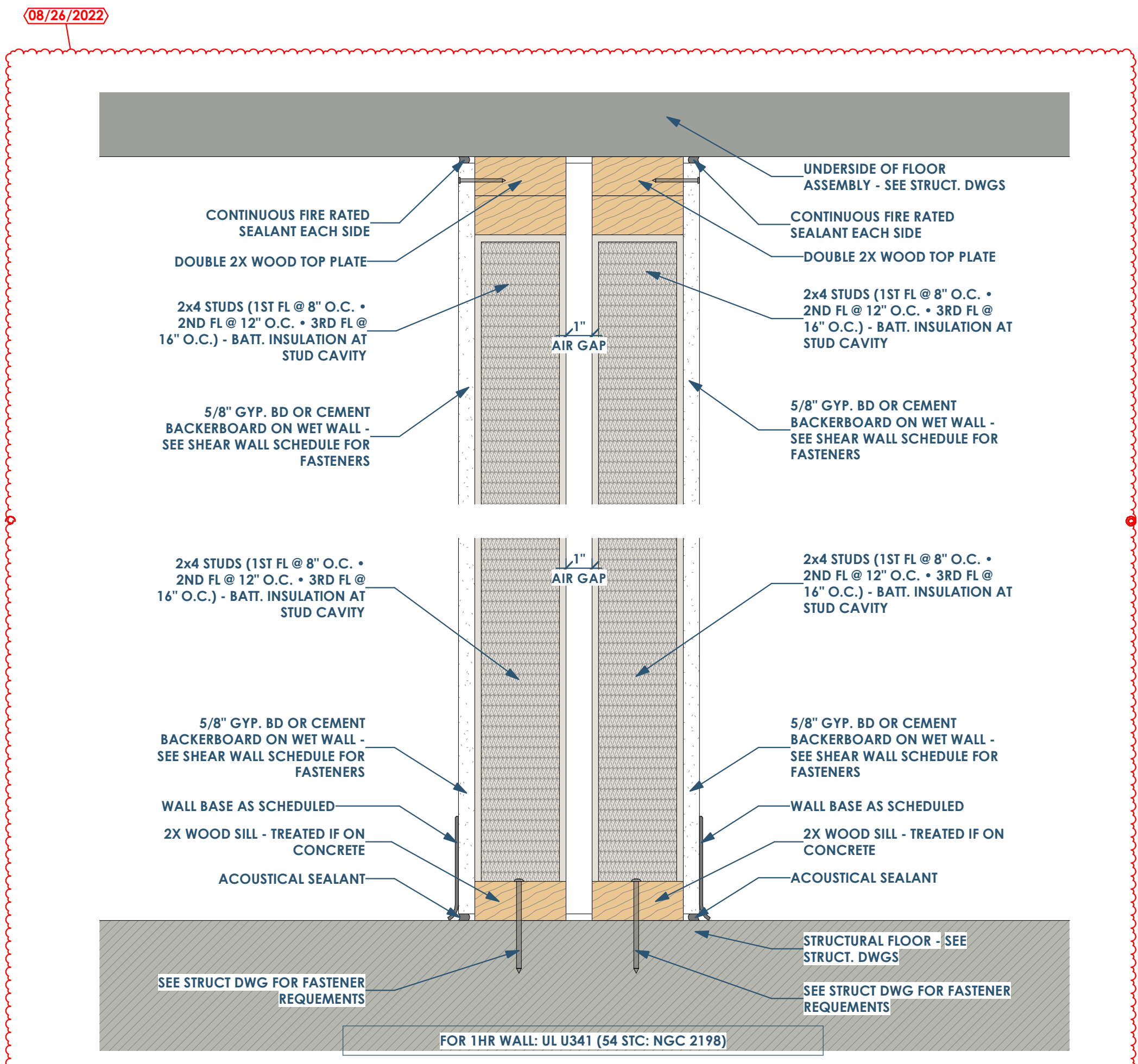
- EXAMPLE: M358B0AR
 - M=METAL
 - 358=3 5/8" METAL STUD
 - B=20 GA METAL STUDS 16" O.C. W/ BATT INSULATION
 - 0=0 HOUR
 - A=PARTIAL HEIGHT PARTITION (WALL LAYER 1, 2, & 3 TO EXTEND 4" ABOVE FINISHED CEILING HEIGHT)
 - R=FURRED OUT WALL



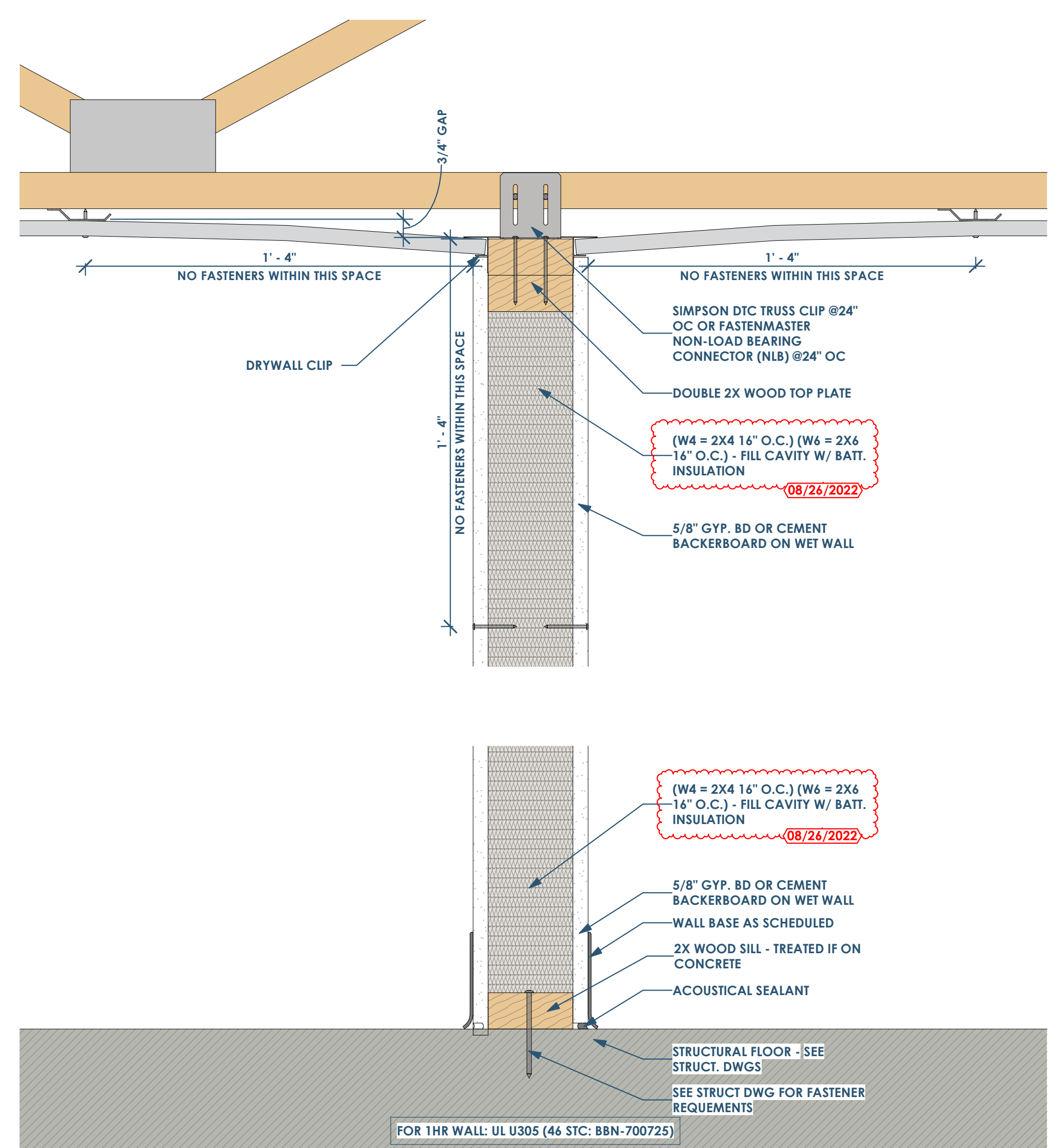
2A A800
W4H5F PARTY WALL - 1 HR RATED WALL (ONLY NEEDS TO BE 1/2 HR RATED)
 3" = 1'-0"



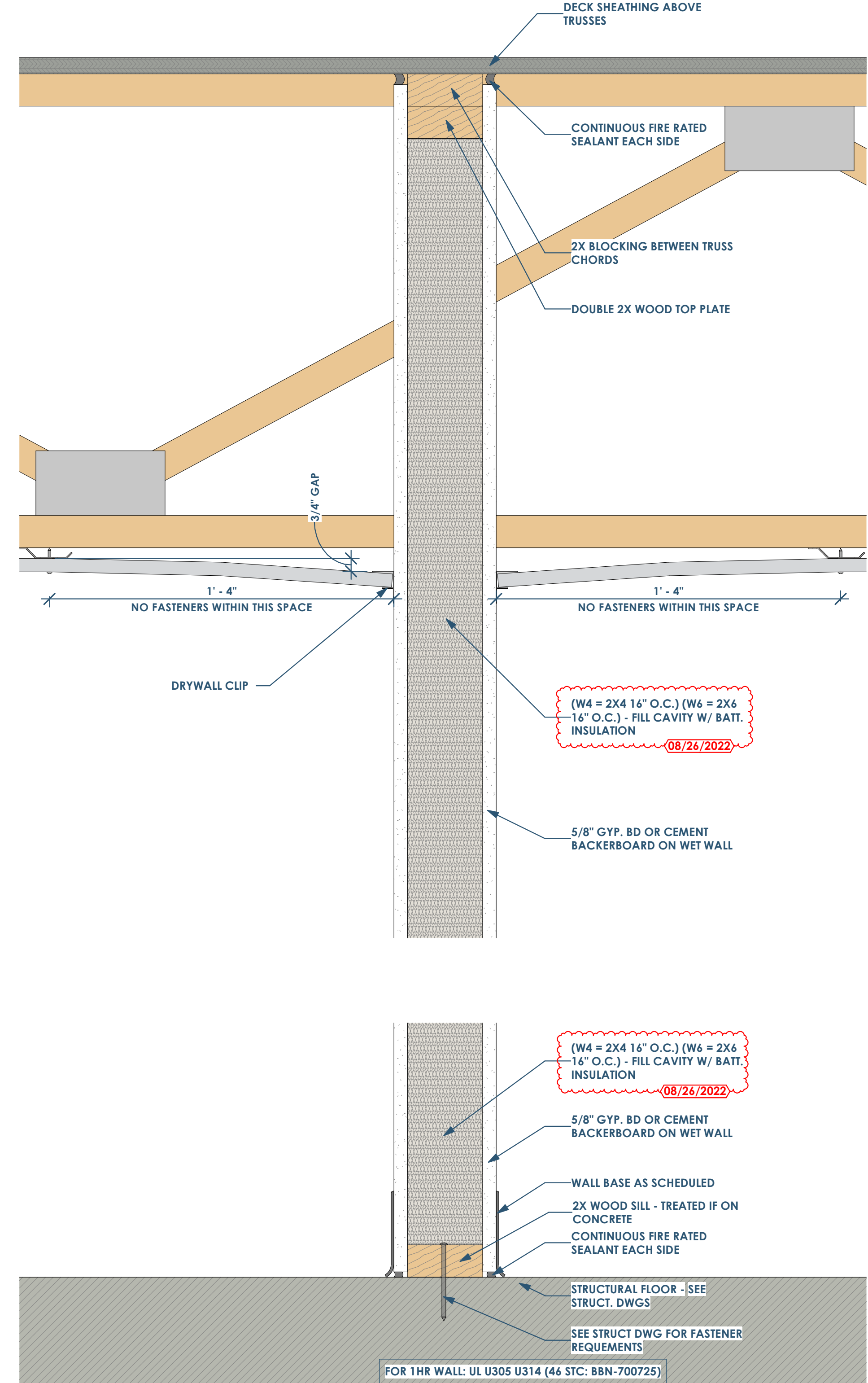
6E A800
FLOOR/CEILING ASSEMBLY - L521
 1 1/2" = 1'-0"



5C A800
W4G5F PARTY WALL - 1 HR RATED WALL (ONLY NEEDS TO BE 1/2 HR RATED)
 3" = 1'-0"



5A A800
W4B0F PARTY WALL - FULL HEIGHT PARTITION
 3" = 1'-0"



6A A800
W4B1D PARTY WALL - FULL HEIGHT - TO DECK - PARTITION (1 HR RATED)
 3" = 1'-0"

This project, like most OpeningDesign's projects, is open source (Attribution-ShareAlike 4.0 International-CC BY-SA 4.0)-freely available to any party for future use, assuming the terms such as Attribution and ShareAlike are honored.

Date	Description
08/10/2022	Issued for Permit
08/26/2022	Permit Revisions



openingdesign

 Architect: OpeningDesign

 17 S Fairchild | FL 7

 Madison, WI 53703

 ryan@openingdesign.com | 773.425.6456