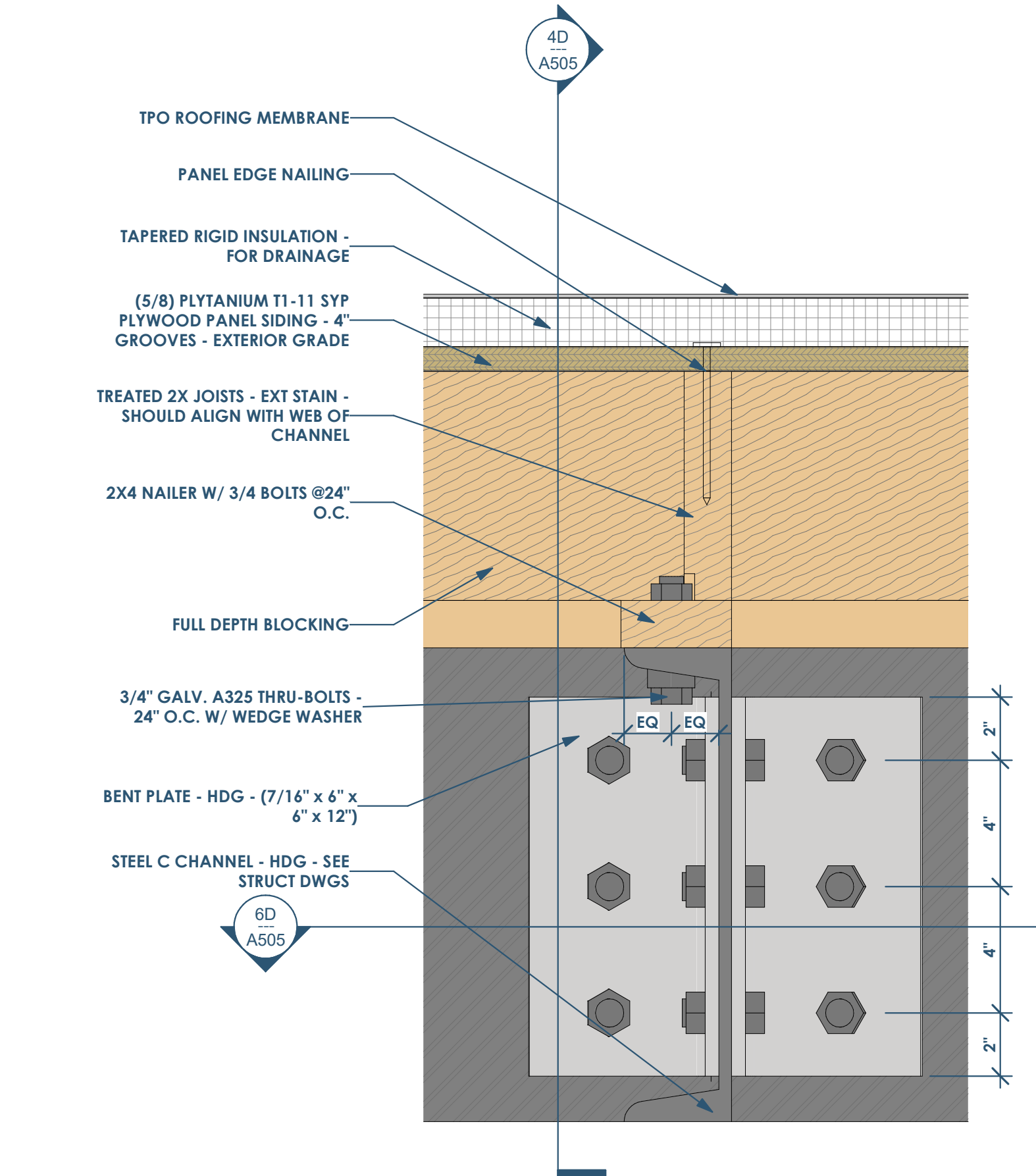
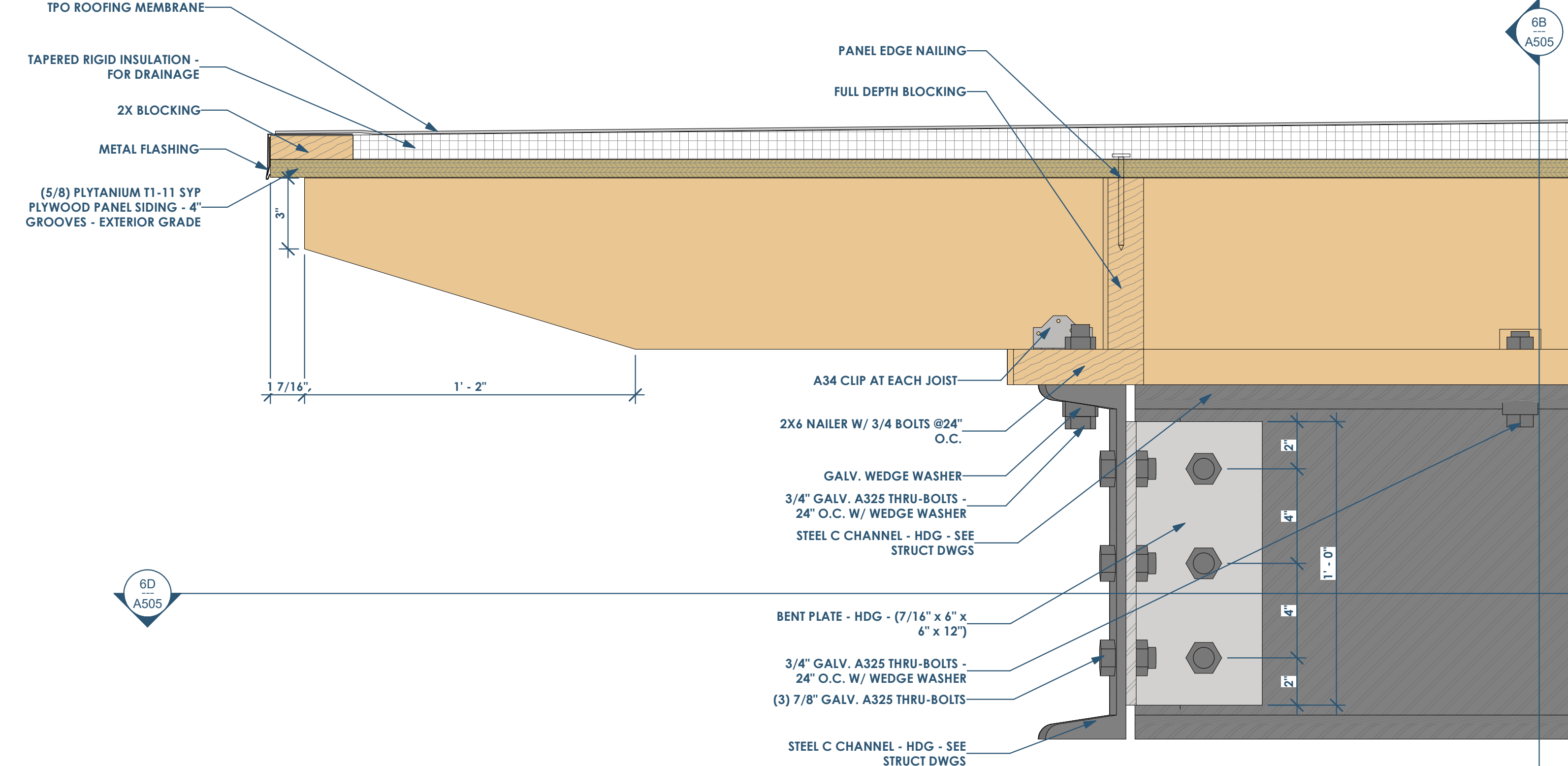


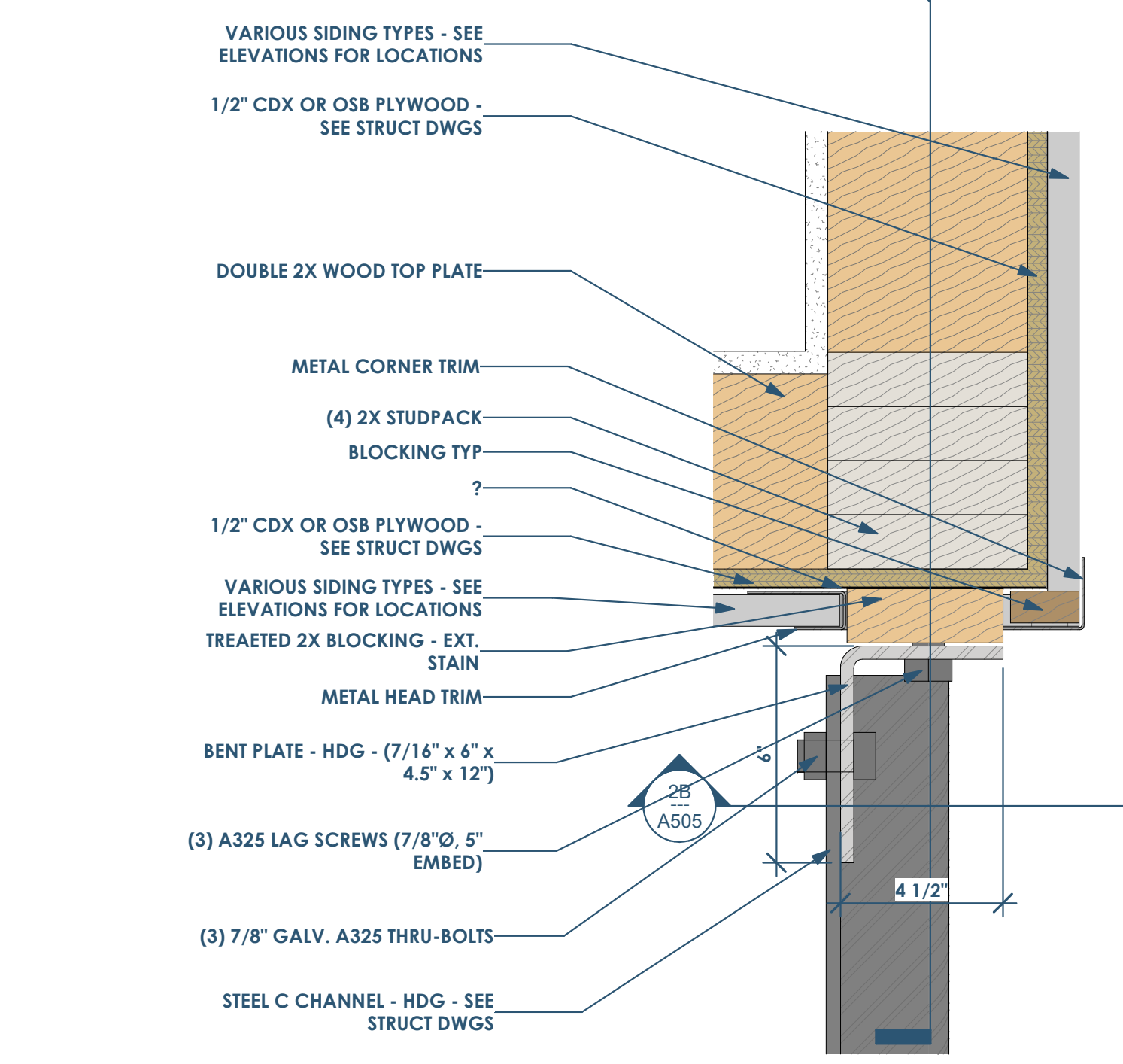
4D A505 DETAIL - ROOF - C CHANNEL PLAN
3" = 1'-0"



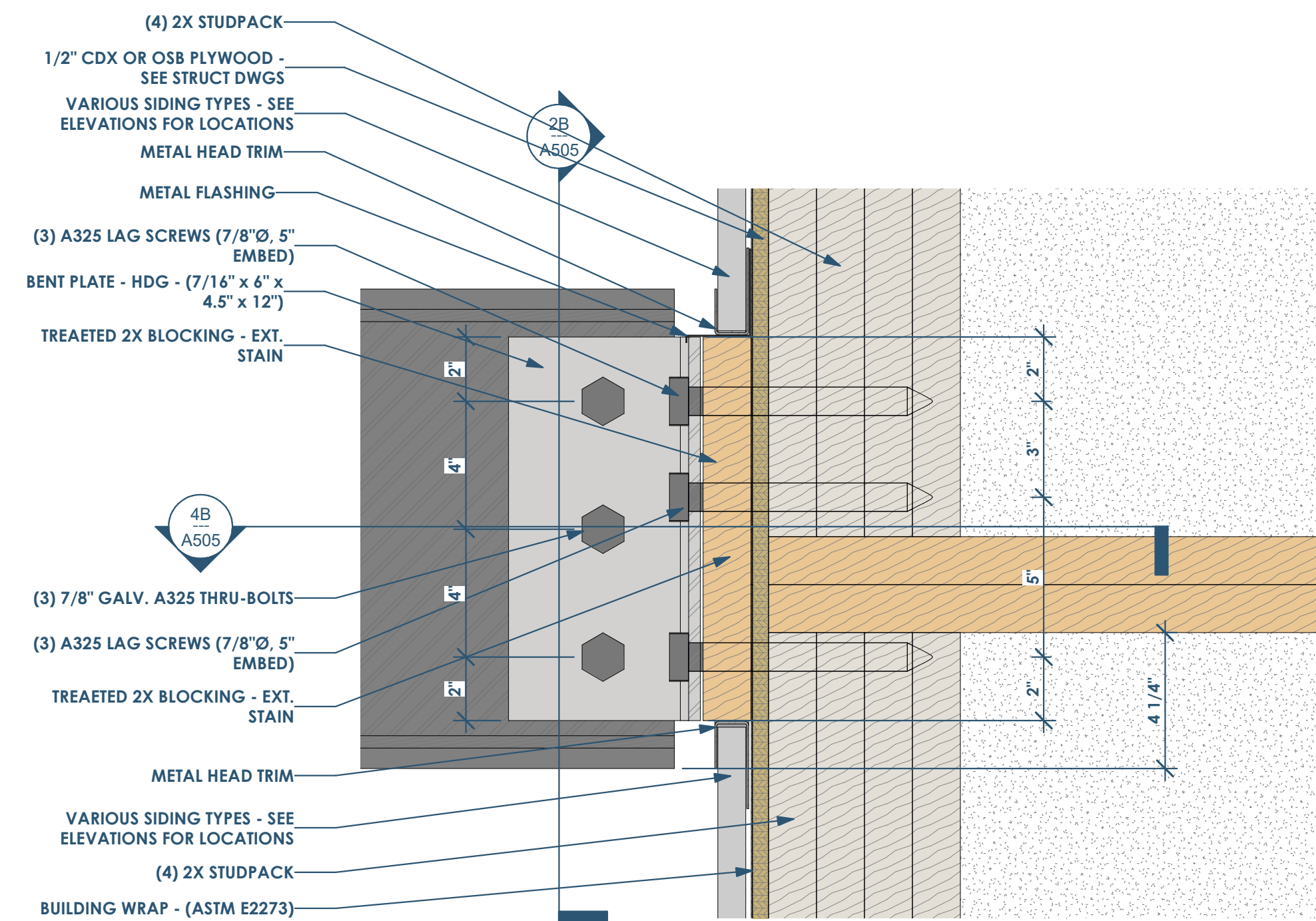
4B A505 DETAIL - ROOF - C CHANNEL SECTION 1
3" = 1'-0"



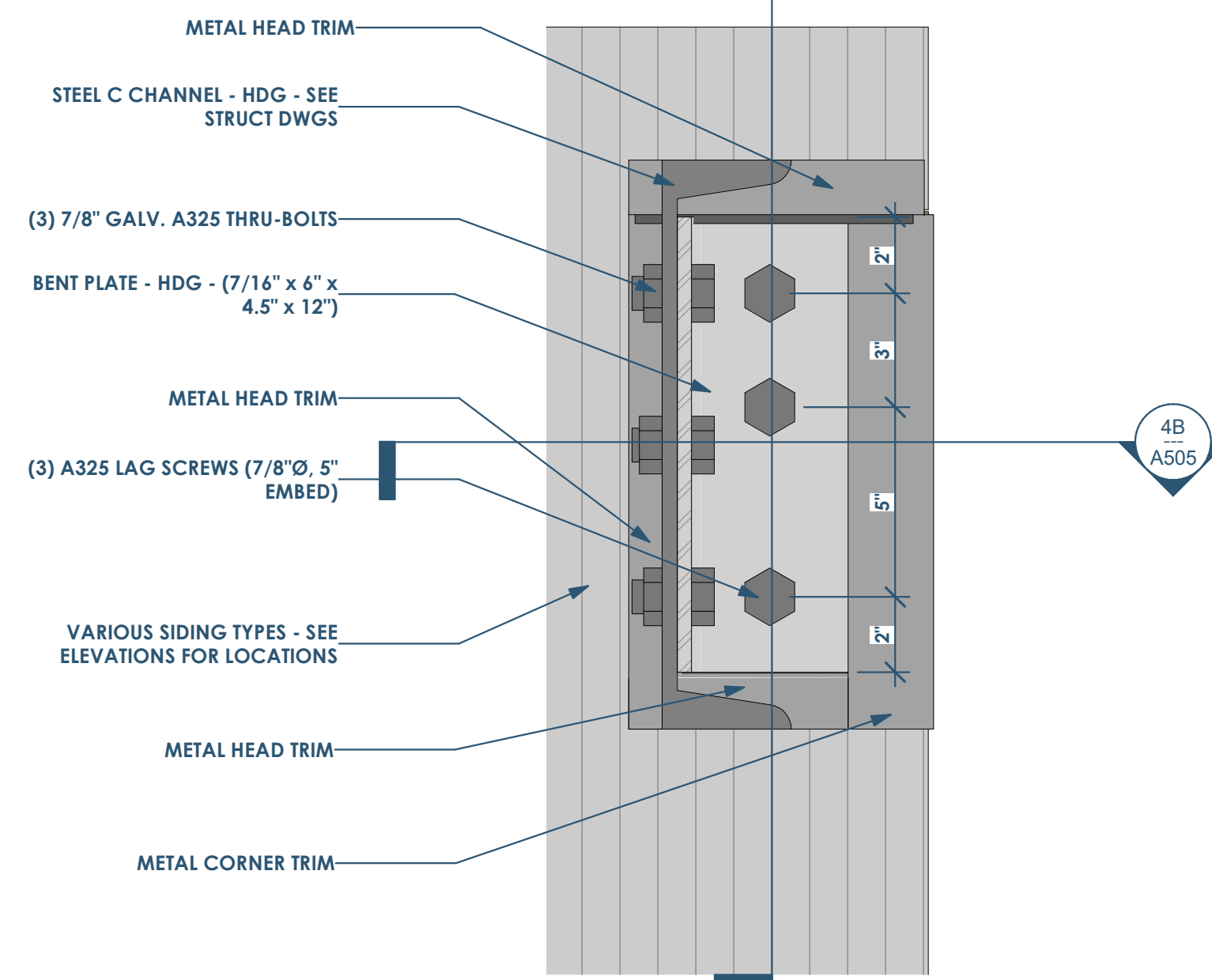
4D A505 DETAIL - ROOF - C CHANNEL SECTION 2
3" = 1'-0"



4B A505 DETAIL - ROOF 2 - C CHANNEL PLAN
3" = 1'-0"



4A A505 DETAIL - ROOF 2 - C CHANNEL SECTION 1
3" = 1'-0"



2B A505 DETAIL - ROOF 2 - C CHANNEL SECTION 2
3" = 1'-0"

RENOVATION
Wranglers
ENGINEERS

Owner: Renovation Wranglers
102 E 26th St
Bryan, TX 77803
katerencason@time.com | 979.450.9969

LKB
ARCHITECTURE

Architect of Record: LKB Architecture
2929 Allen Pkwy Suite 200
Houston, TX 77019
isa@lkbarchitecture.com | 713.425.3076

DUDDLEY
STRUCTURAL

Structural: Dudley
Firm # 18677
6102 Imperial Loop Drive
College Station, TX 77845
corieka@dudleyeng.com | (979) 777-0720

amc
ENGINEERS

MEP: AMC Engineers
Texas Firm #9441
508 E Jackson St # 552
Bunel, TX 78611
info@amcengineers.com | 512.535.6427

This project, like most OpeningDesign's projects, is open source. (Attribution-ShareAlike.4.0 International-CC BY-SA 4.0)-freely available to any party for future use, assuming the terms such as Attribution and ShareAlike are honored.

openingdesign

Architect: OpeningDesign
17 S Fairchild | FL 7
Madison, WI 53703
ryan@openingdesign.com | 773.425.6456

Date	Description
04/10/2022	Issued for Permit
08/26/2022	Permit Revisions