

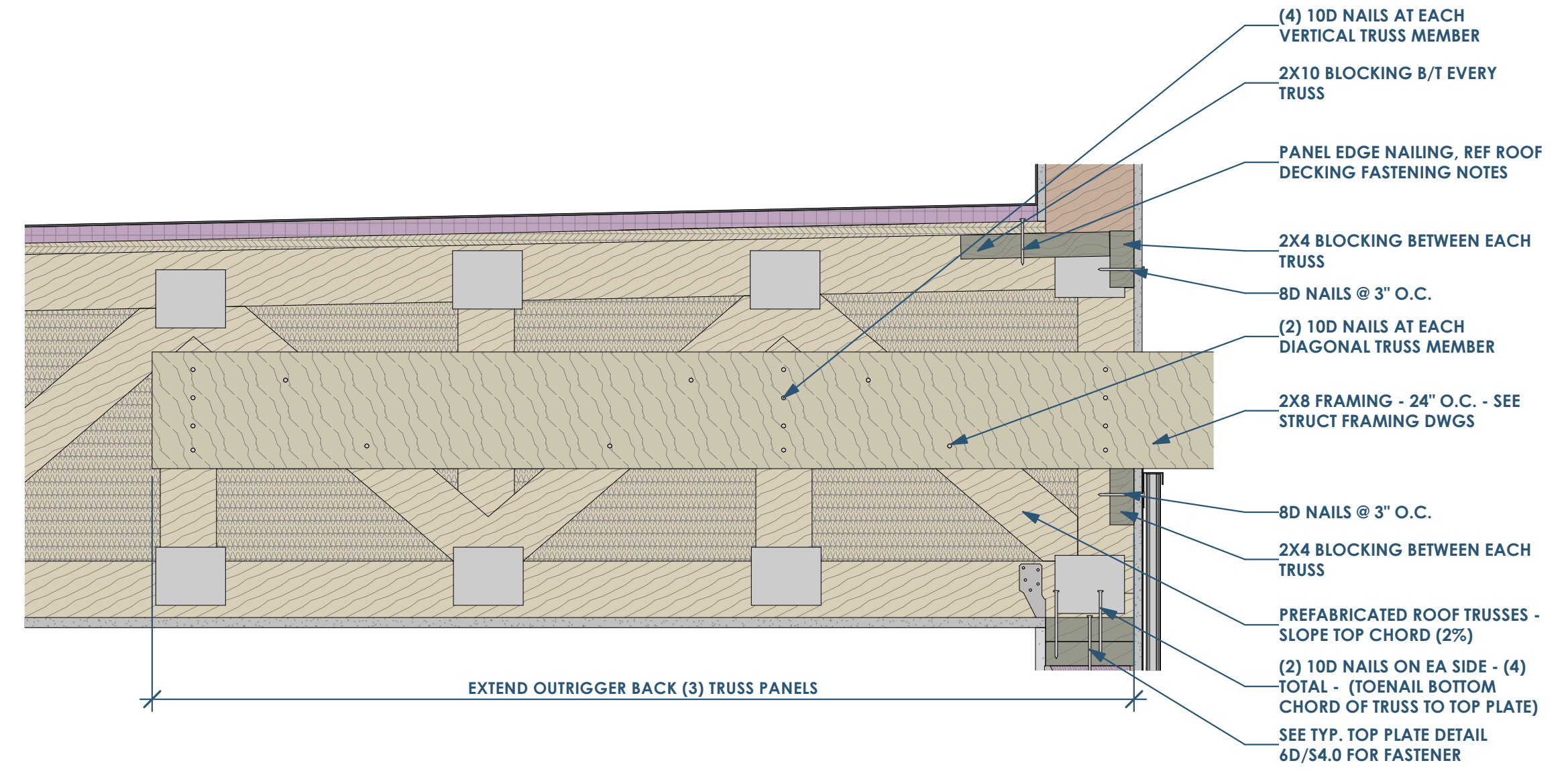
**RENOVATION**  
Wranglers

Owner: Renovation Wranglers  
102 E 26th St  
Bryan, TX 77803  
kate@renovations.com | 979.450.9969

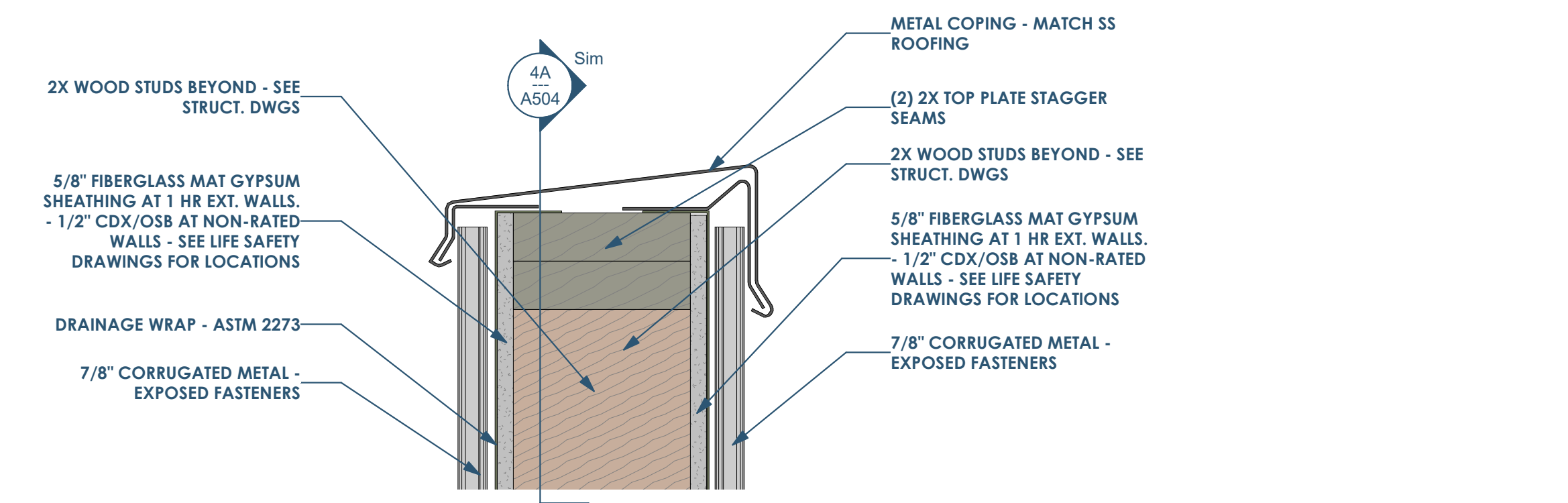
**ARCHITECTURE**  
Architect of Record: LKB Architecture  
2929 Allen Pkwy Suite 200  
Houston, TX 77019  
isa@lkbarchitecture.com | 713.425.3076

**DUDDLEY**  
Structural: Dudley  
Firm# 18677  
6102 Imperial Loop Drive  
College Station, TX 77845  
corieka@dudleyeng.com | (979) 777-0720

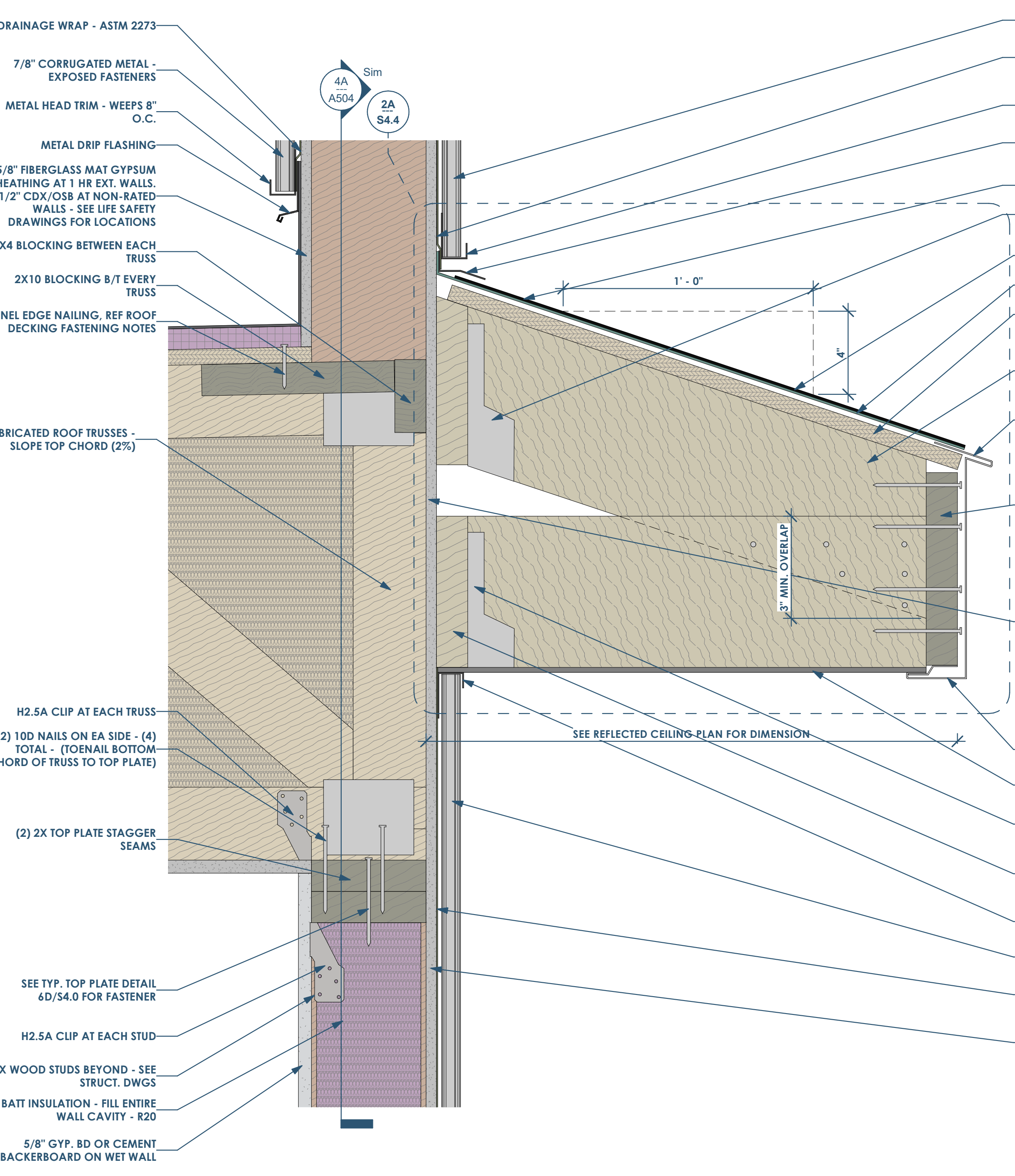
**amc**  
ENGINEERS  
MEP: AMC Engineers  
Texas Firm #9441  
508 E Jackson St # 552  
Burrket, TX 78611  
info@amcengineers.com | 512.535.6427



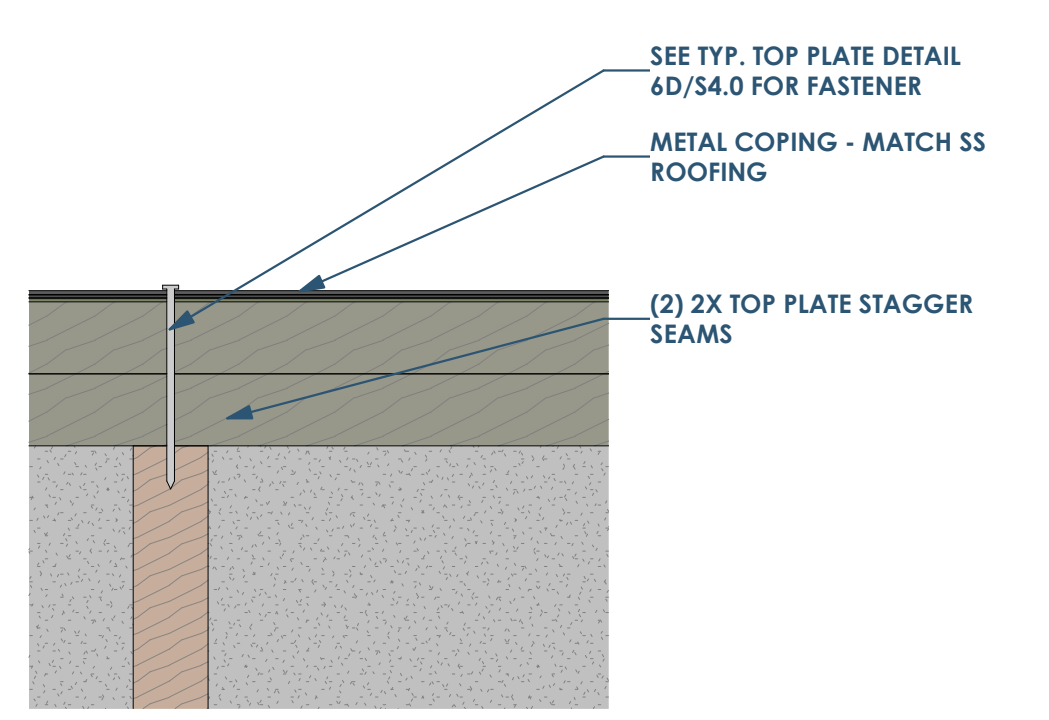
6E SECTION DETAIL AT OUTRIGGER 1 1/2" = 1'-0"



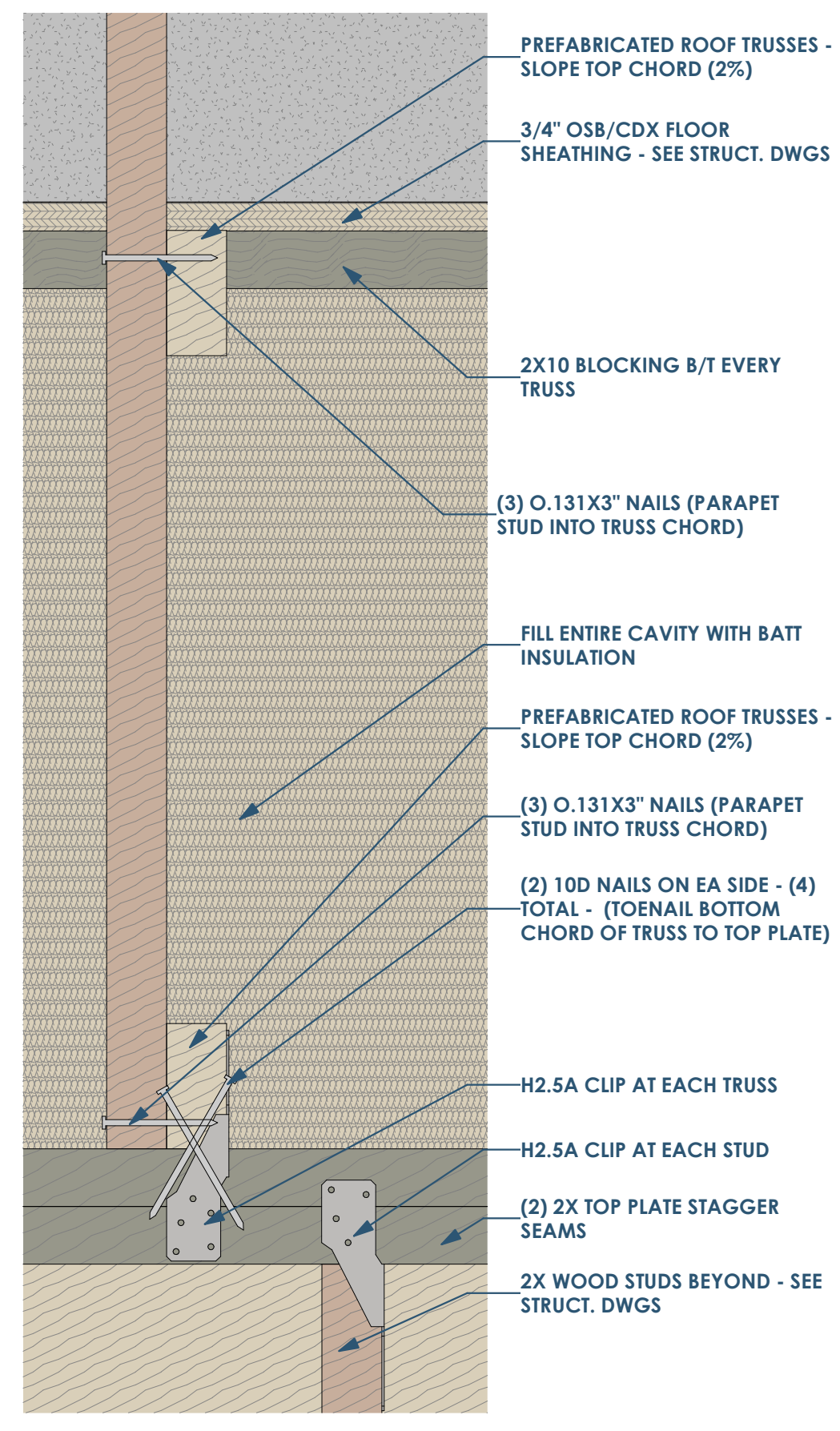
6D SECTION DETAIL - TOP OF PARAPET 3" = 1'-0"



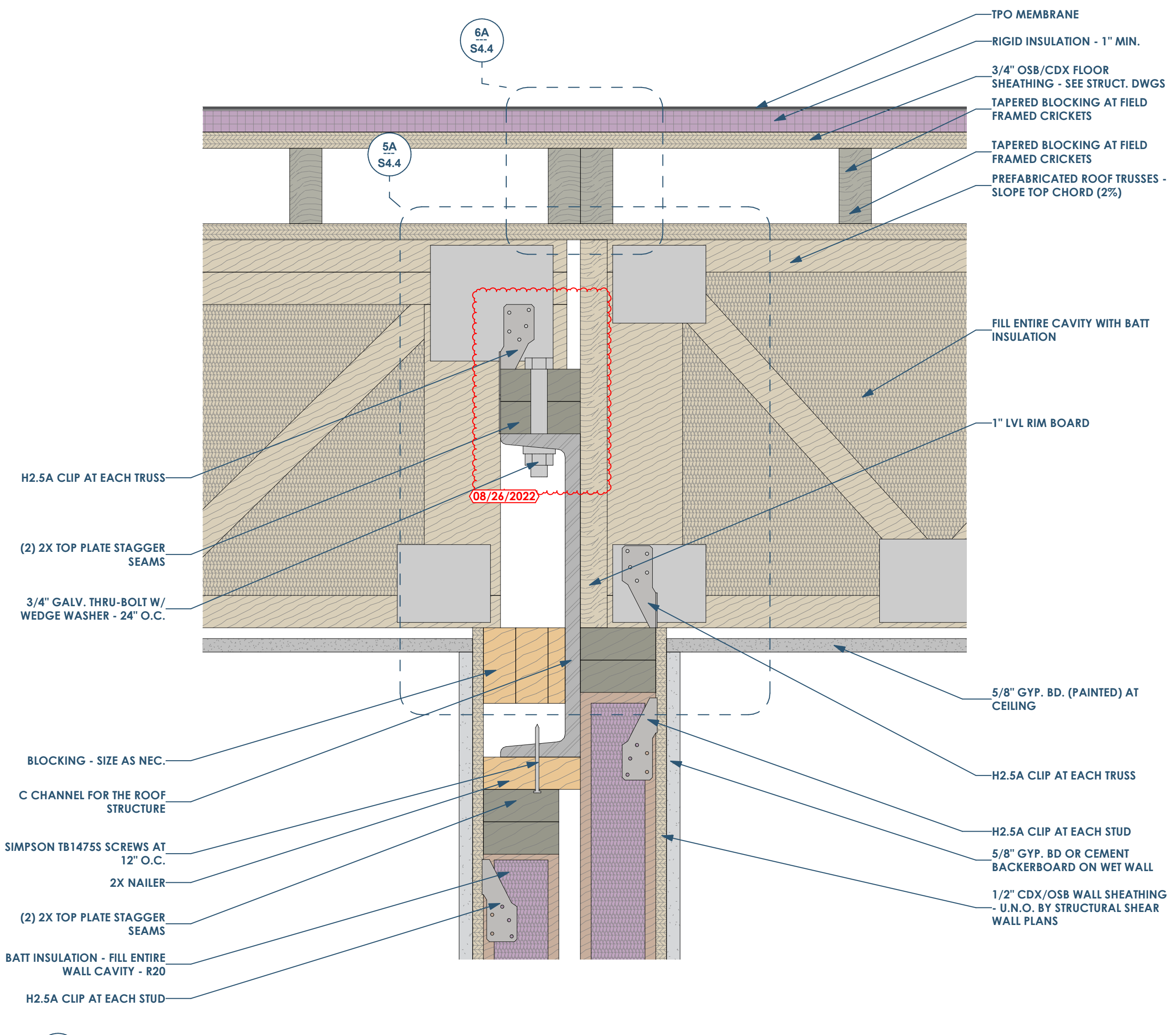
6A SECTION DETAIL - ROOF AND SOFFIT 3" = 1'-0"



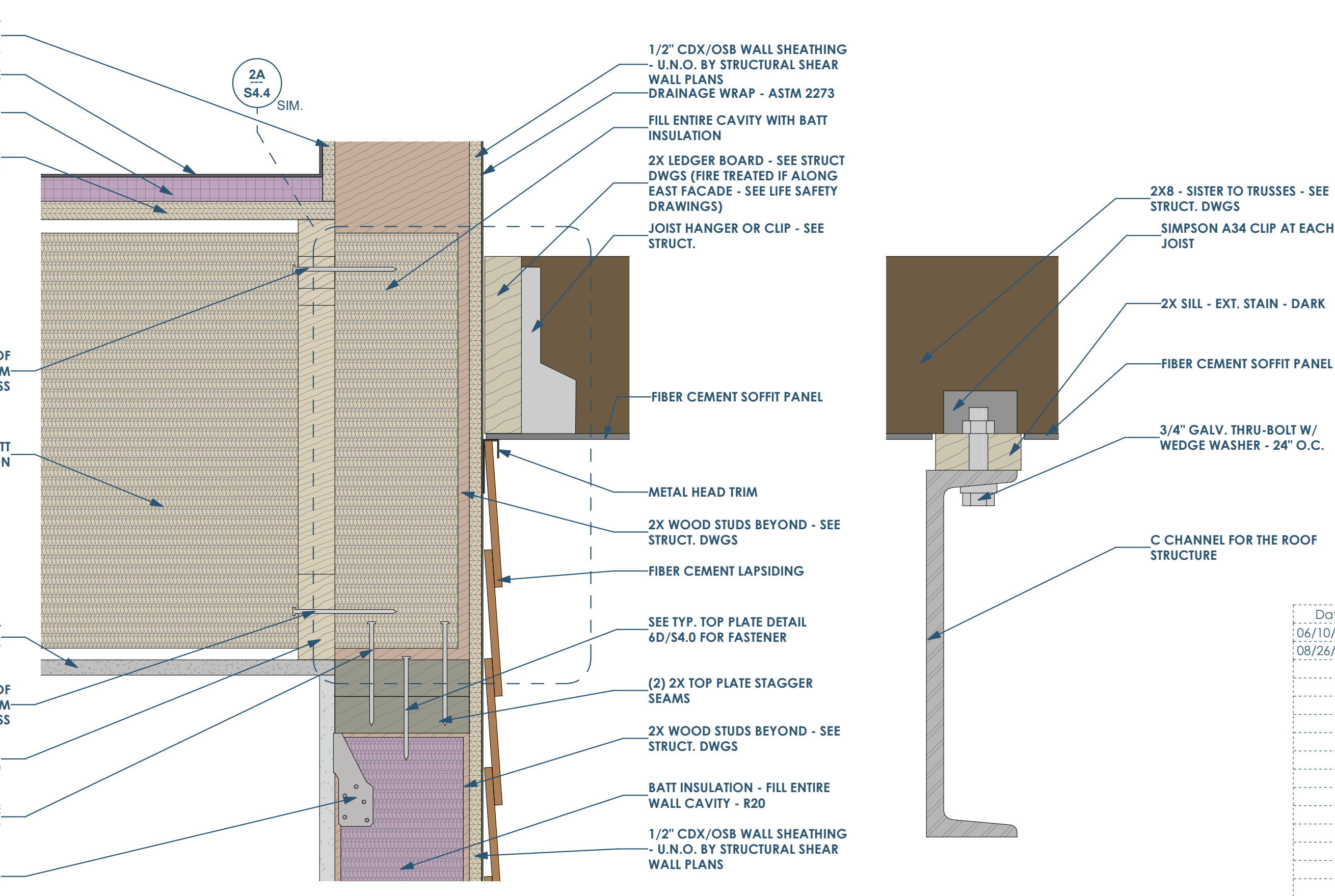
4A SECTION DETAIL - AT PARAPET WALL 3" = 1'-0"



3A SECTION DETAIL - AT SOFFIT AND ALCOVE 3" = 1'-0"



3C SECTION DETAIL - AT ROOF BEAM 3" = 1'-0"



2A SECTION DETAIL - ALCOVE AT ROOF BEAM 3" = 1'-0"

This project, like most OpeningDesign's projects, is open source. (Attribution-ShareAlike 4.0 International-CC BY-SA 4.0) - freely available to any party for future use, assuming the terms such as Attribution and ShareAlike are honored.

Date	Description
06/10/2022	Issued for Permit
08/26/2022	Permit Revisions

**openingdesign**  
Architect: OpeningDesign  
17 S Fairchild | FL 7  
Madison, WI 53703  
ryan@openingdesign.com | 773.425.6456