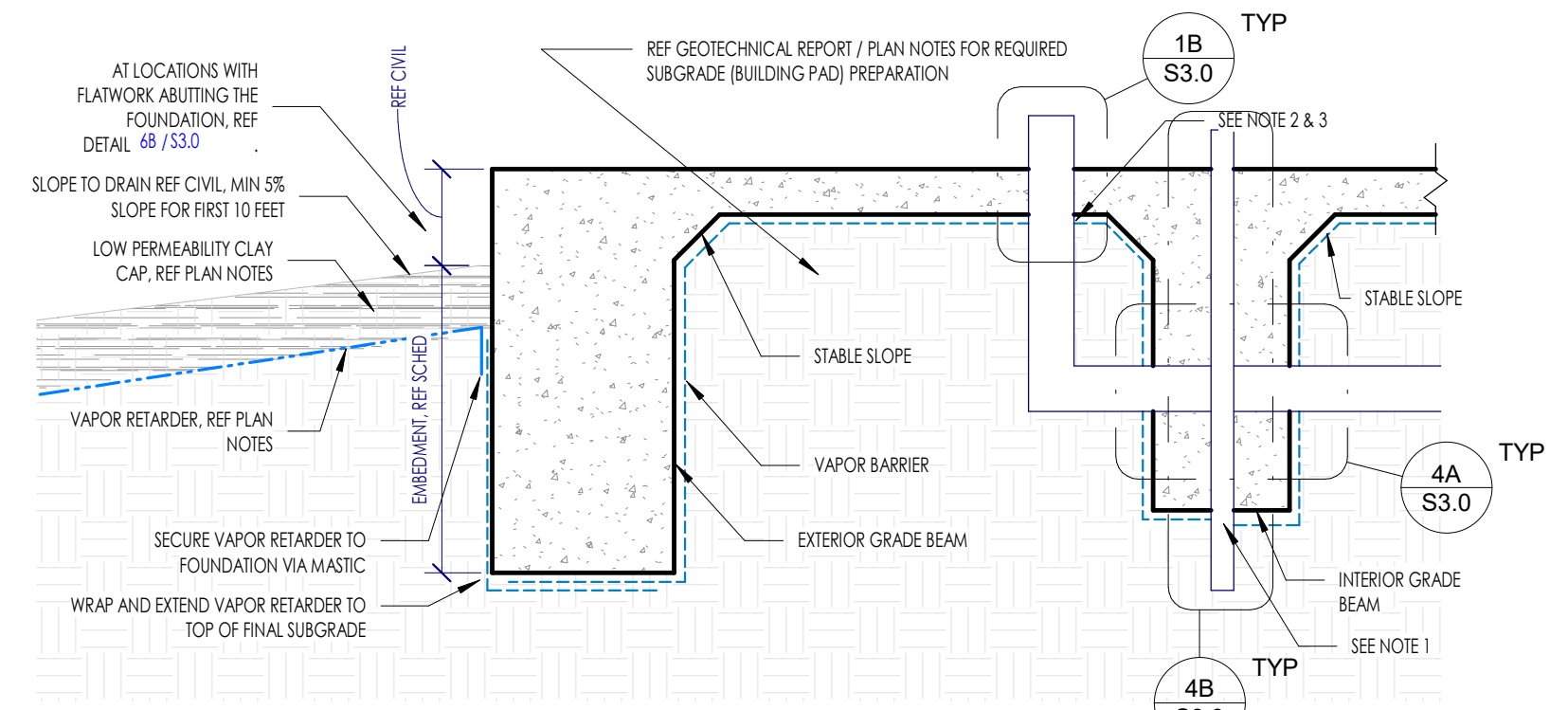
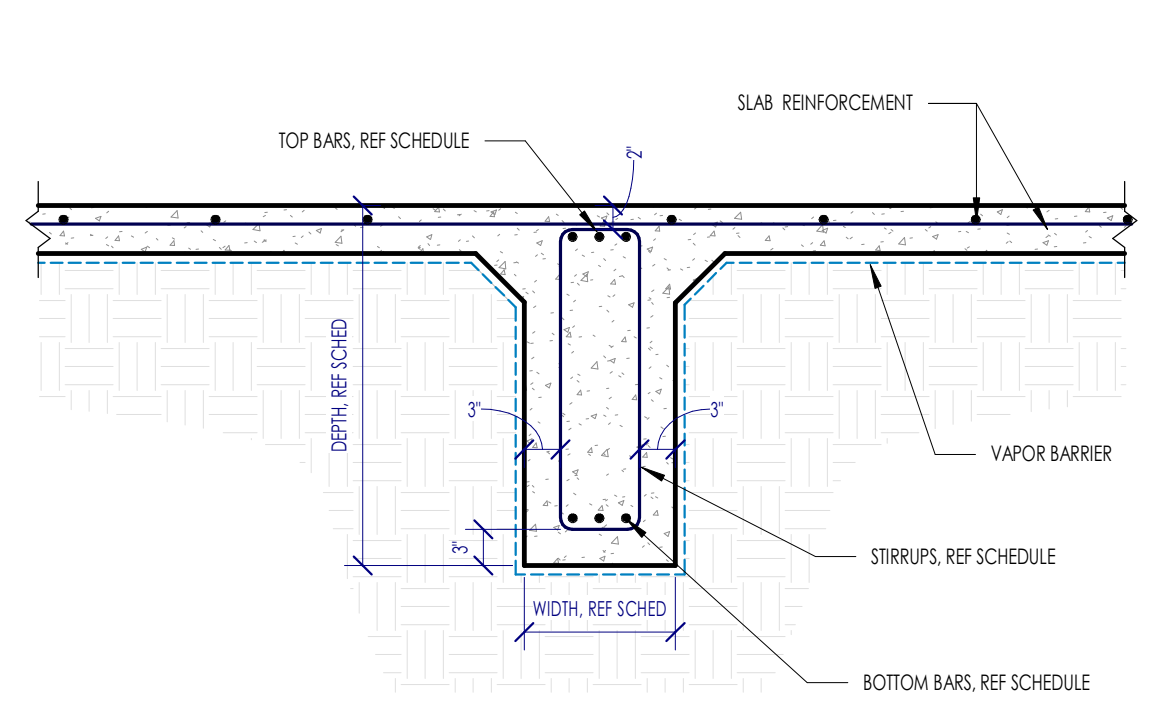


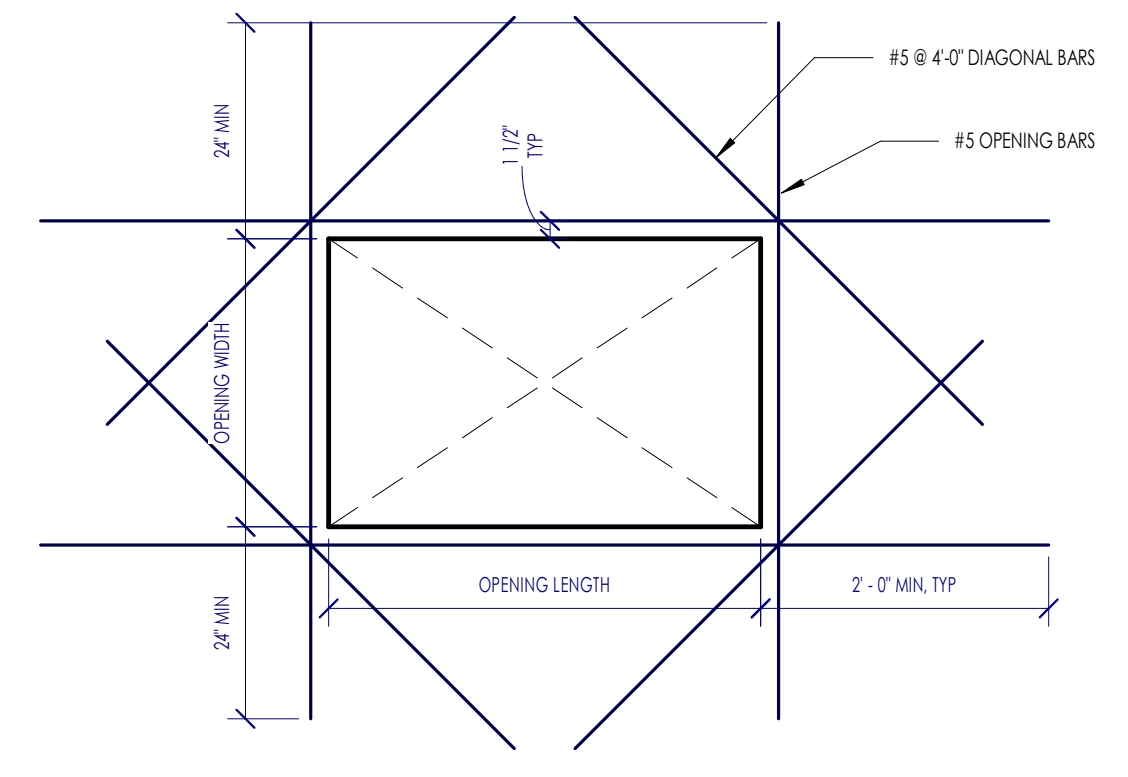
This project, like most OpeningDesign's projects, is open source. (Attribution-ShareAlike 4.0 International-CC BY-SA 4.0)-freely available to any party for future use, assuming the terms such as Attribution and ShareAlike are honored.



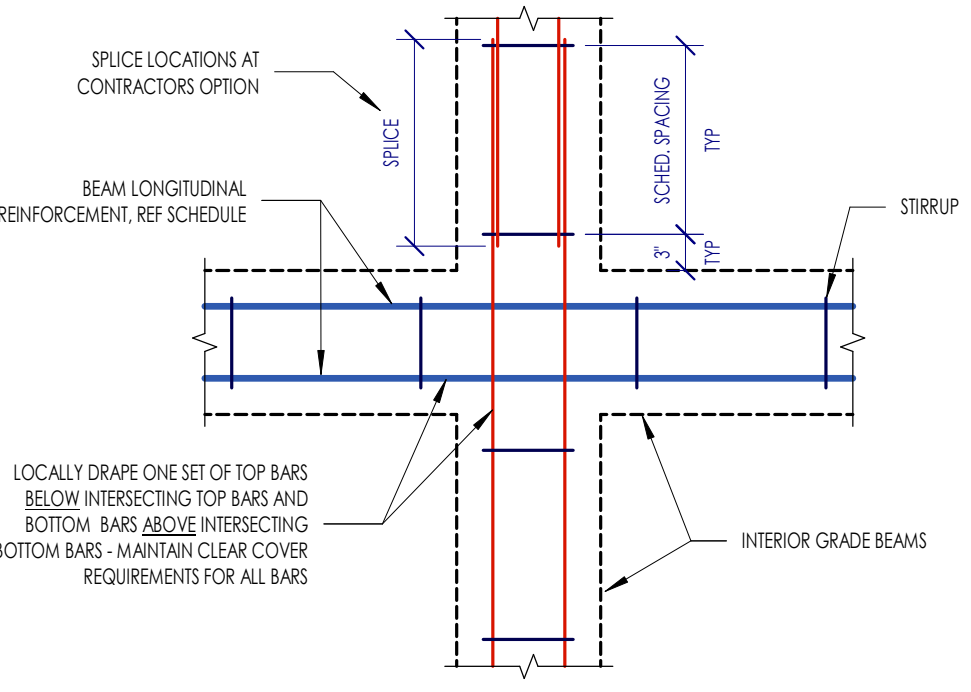
**4B**  
S3.0  
TYPICAL SUBGRADE AND VAPOR RETARDER PREPARATION



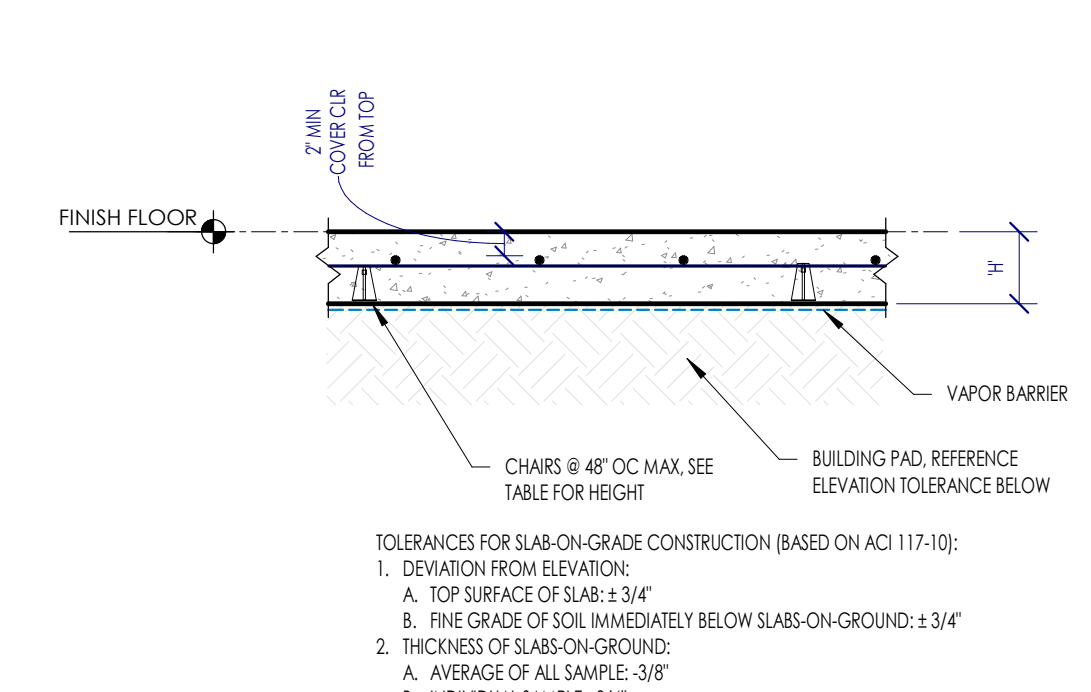
**2D**  
S3.0  
TYPICAL INTERIOR GRADE BEAM



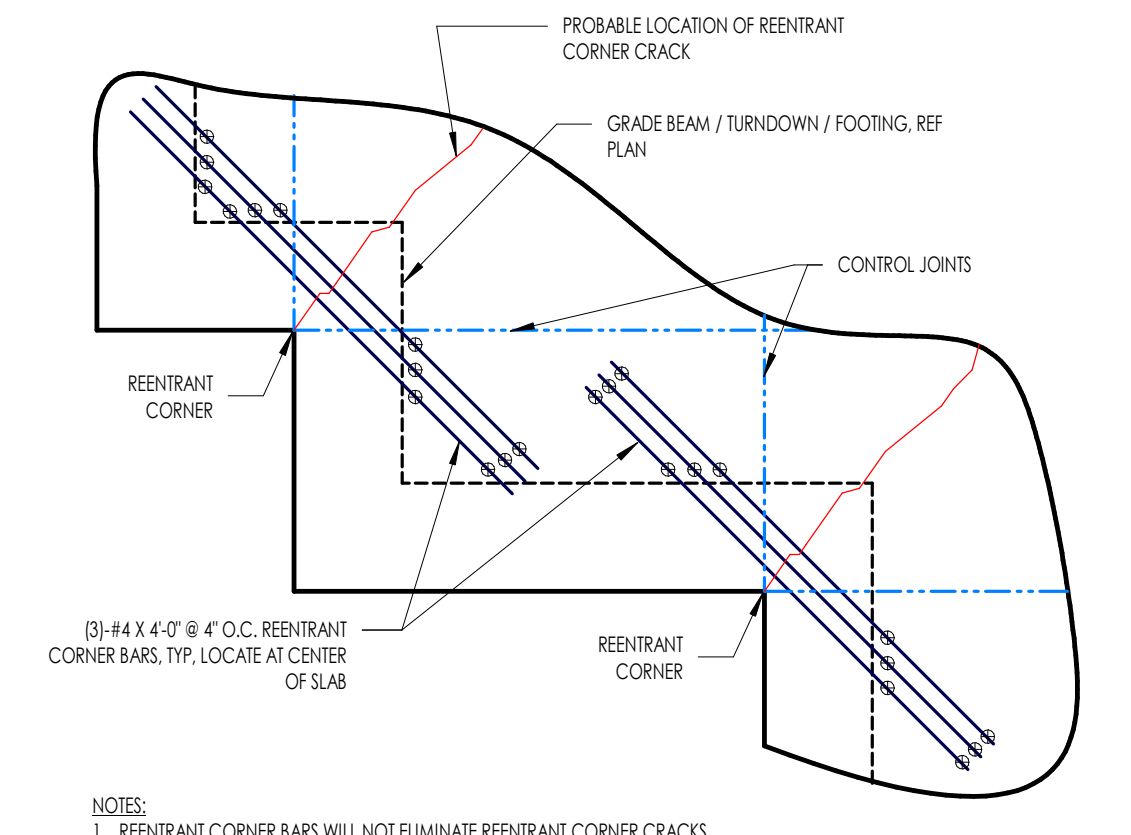
**1D**  
S3.0  
TYPICAL REINFORCEMENT AT SLAB BLOCKOUT



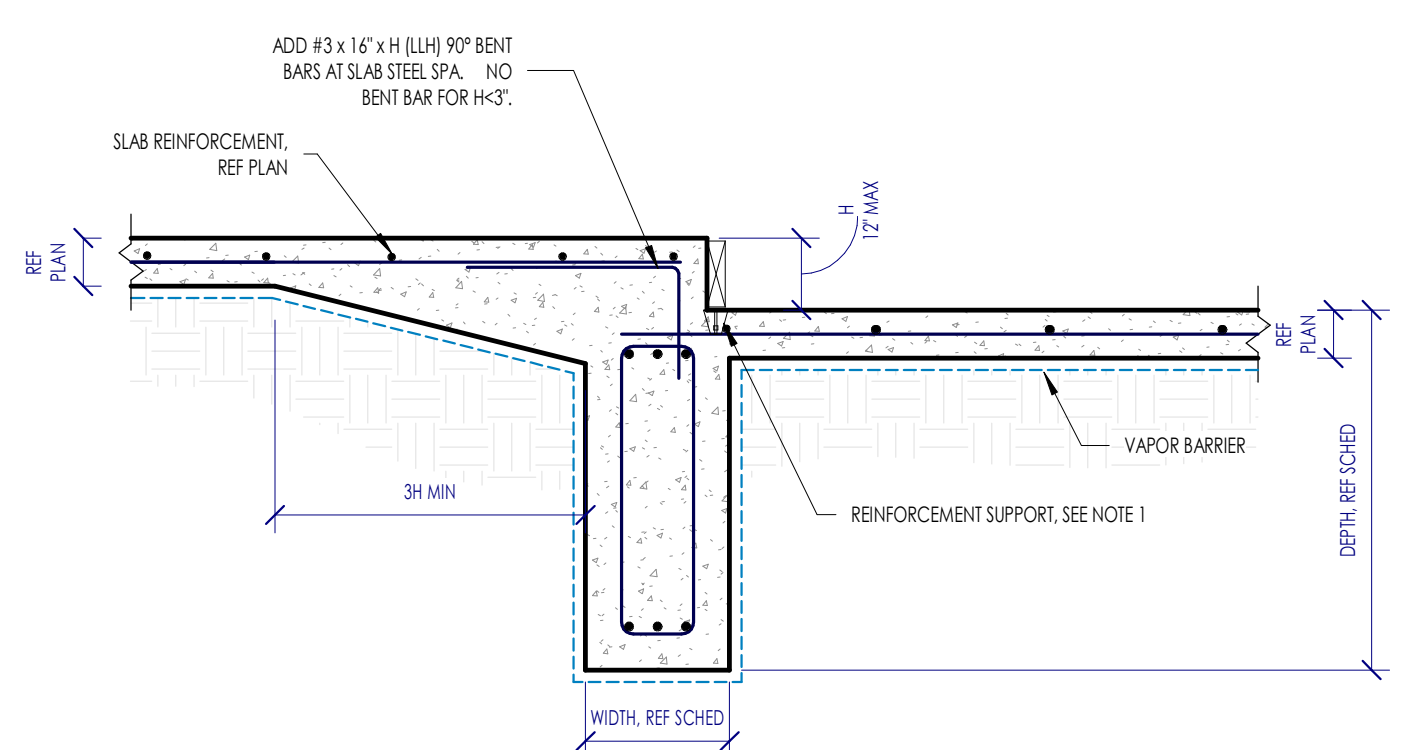
**6C**  
S3.0  
TYPICAL INTERIOR BEAM INTERSECTION



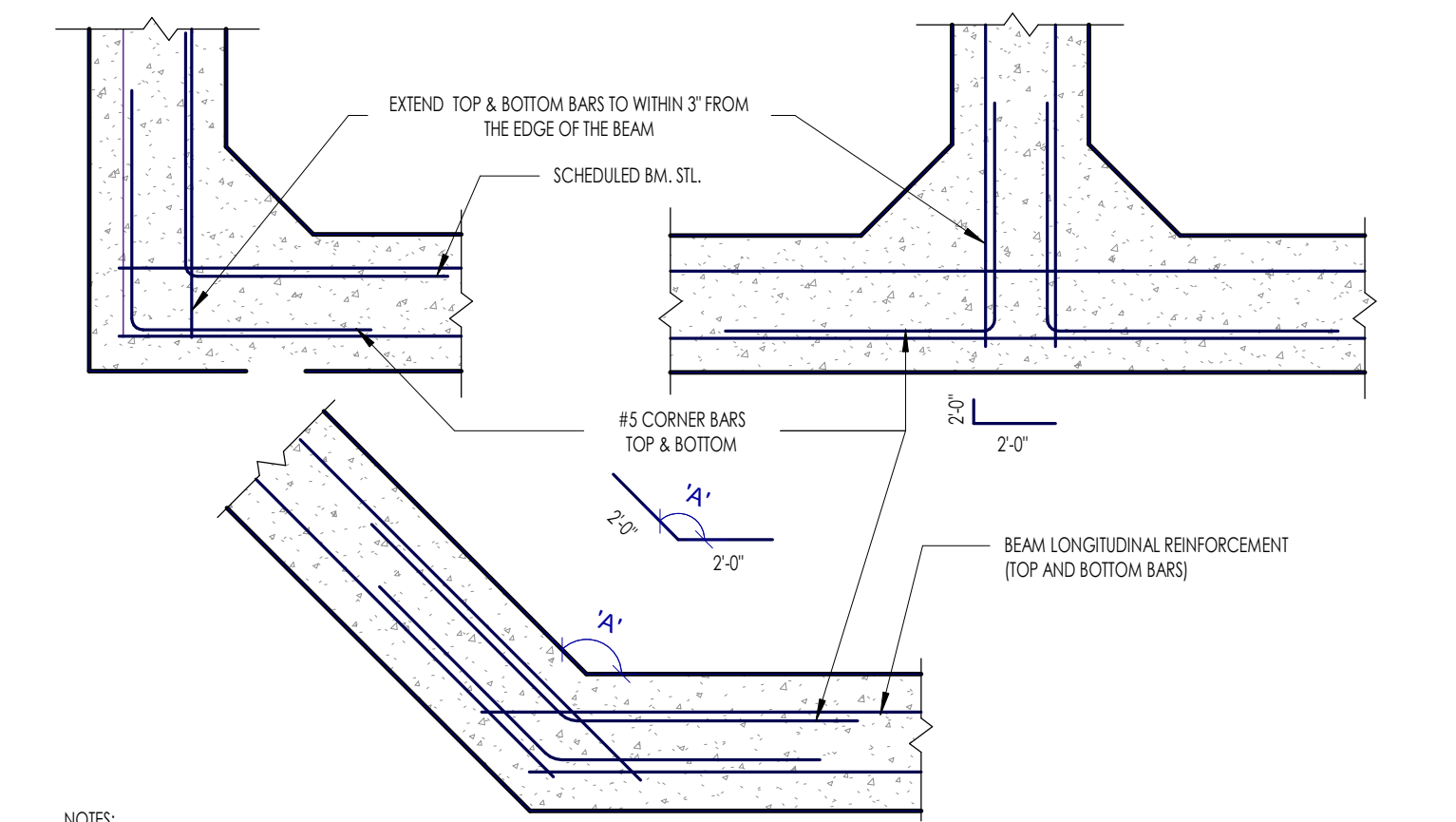
**5C**  
S3.0  
TYPICAL SLAB-ON-GRADE SECTION



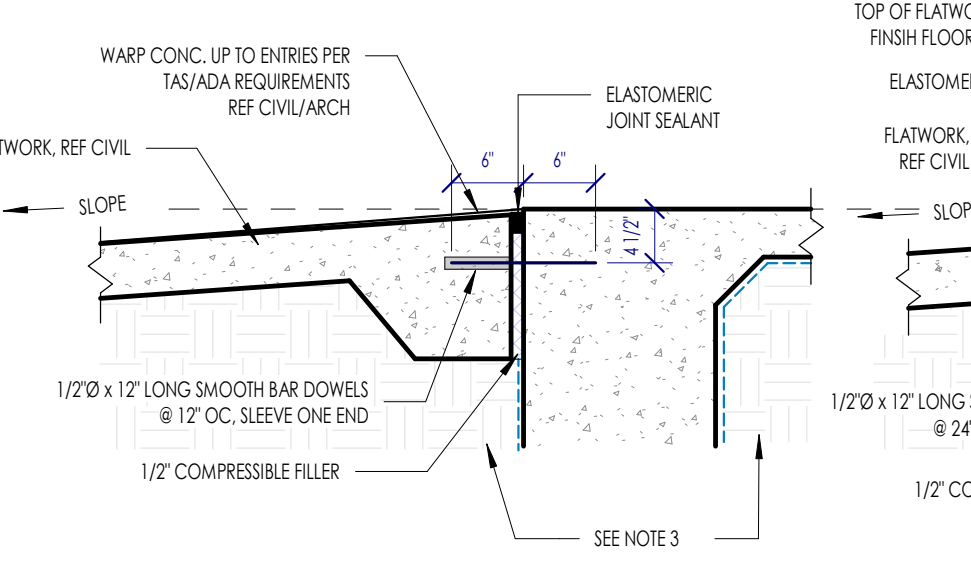
**4C**  
S3.0  
TYPICAL REINFRANT CORNER BARS



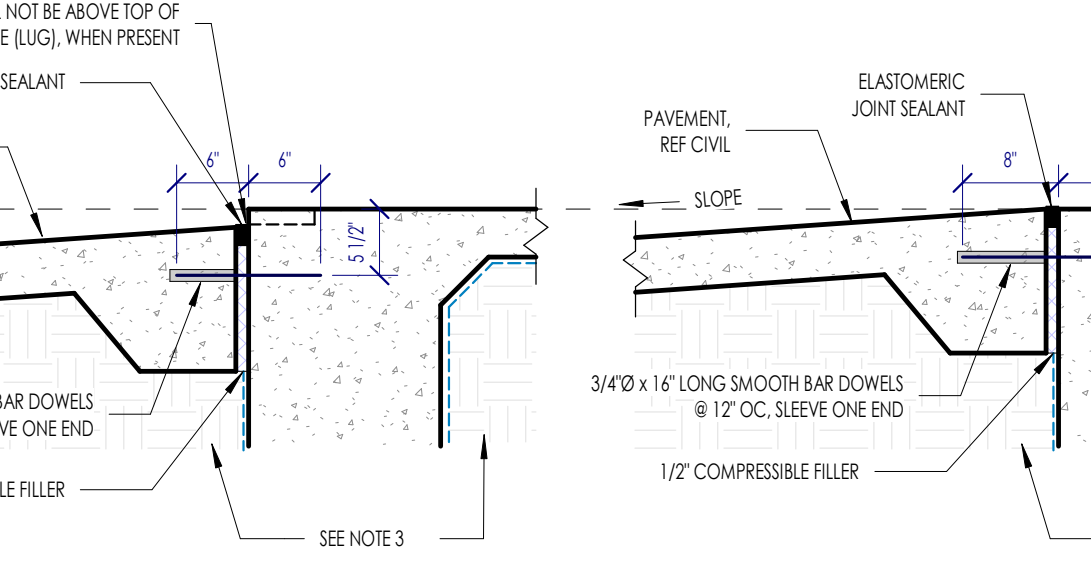
**3C**  
S3.0  
TYPICAL SLAB DROP AT GRADE BEAM



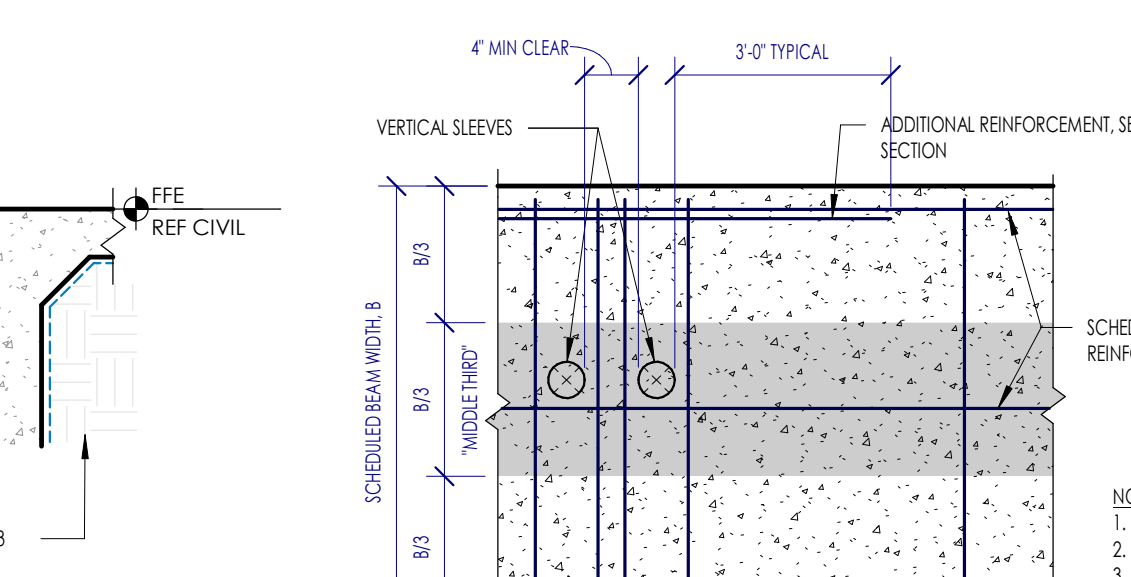
**1C**  
S3.0  
TYPICAL CORNER BARS



**FLATWORK AT ENTRY DOOR**



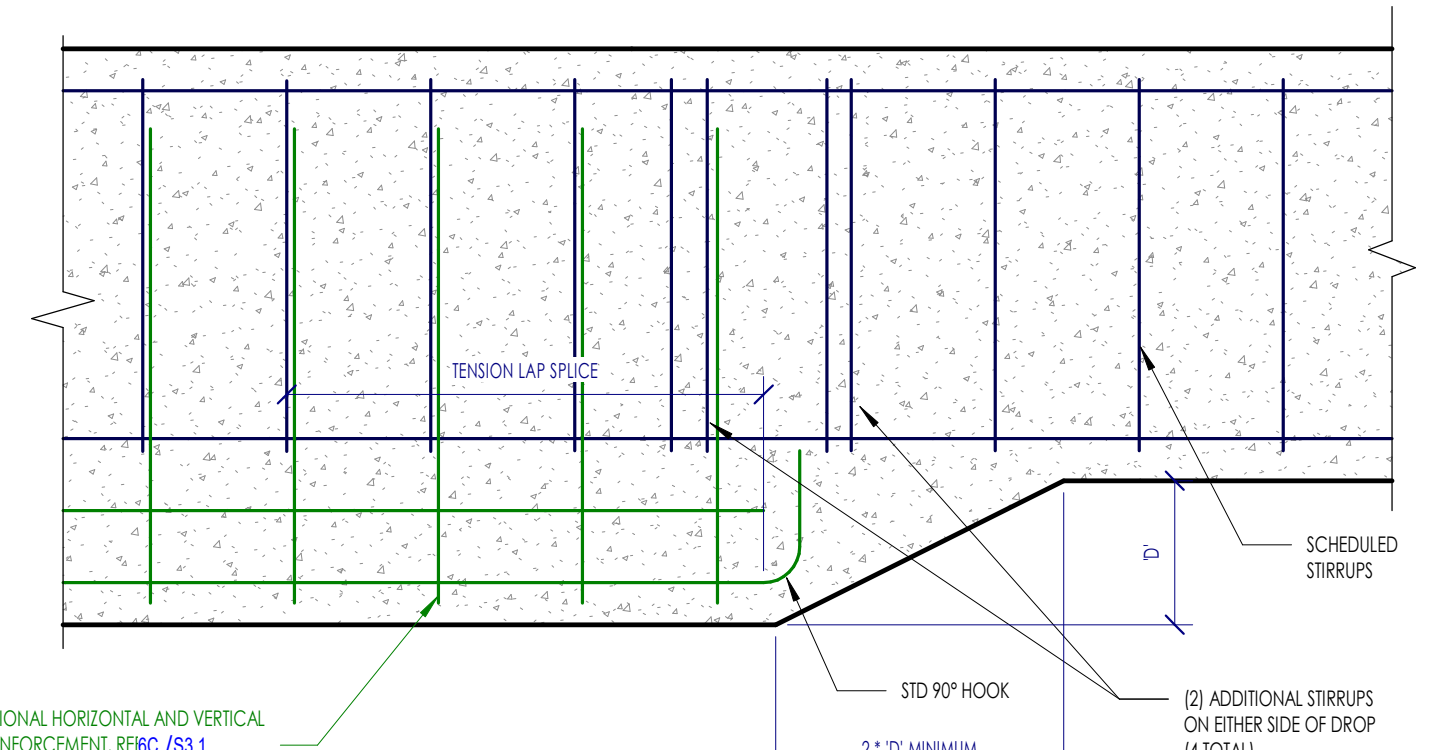
**FLATWORK NOT AT ENTRY DOOR**



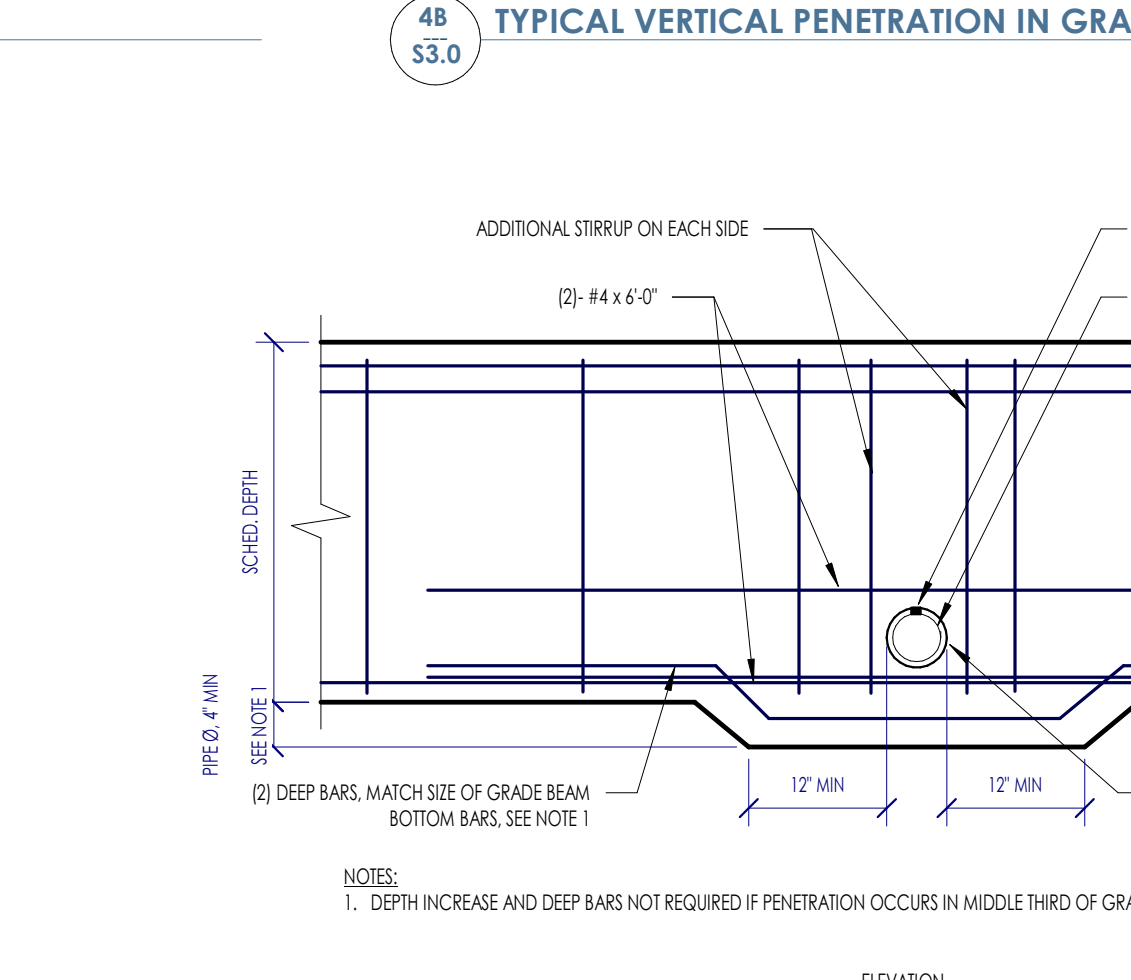
**AT PAVEMENT (DRIVE-IN)**

**NOTES:**  
1. CONTRACTOR TO SUBMIT TO OWNER, ARCHITECT AND ENGINEER THE PRODUCT DATA FOR THE ELASTOMERIC JOINT SEALANT WHICH MUST INCLUDE A RECOMMENDED MAINTENANCE PROGRAM FOR THE SEALANT.  
2. REFERENCE ARCHITECTURE / CIVIL FOR ADA REQUIREMENTS, TOP OF FLATWORK / PAVEMENT.  
3. BUILDING PAD SUBGRADE IMPROVEMENT TO CONTINUE FOR A MINIMUM OF 3' OUTSIDE THE FOUNDATION UNDER FLATWORK / PAVEMENT

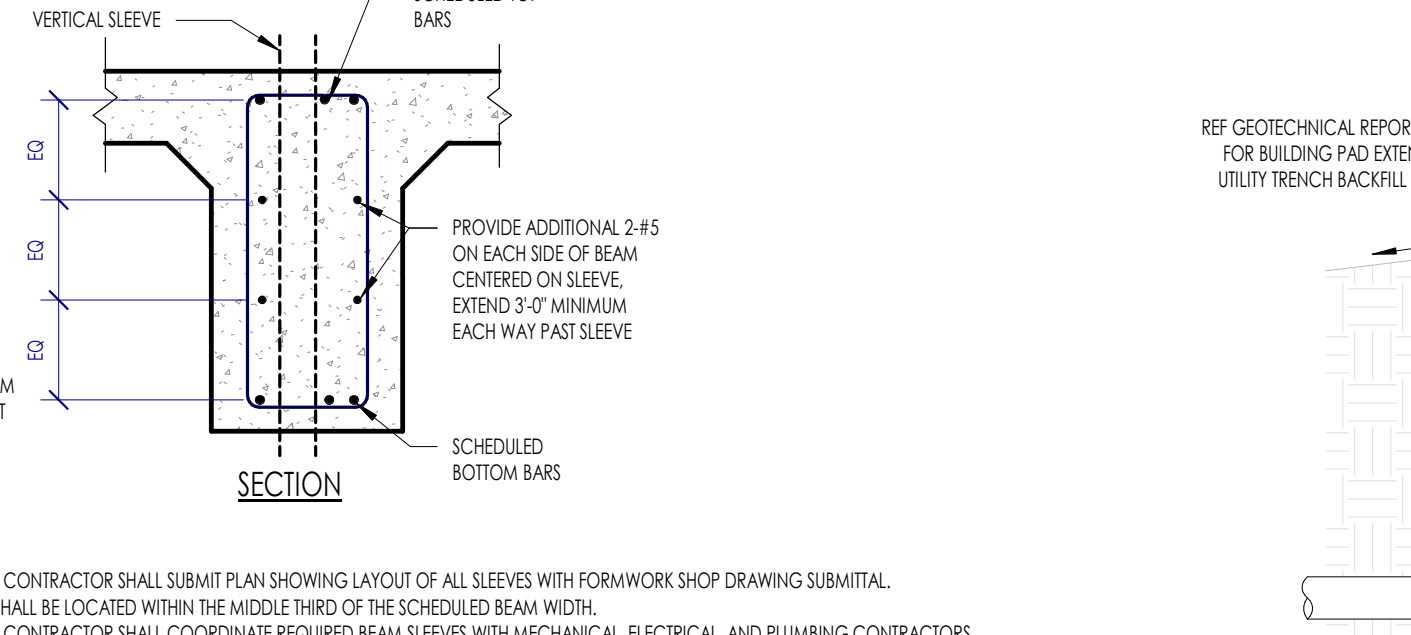
**4B**  
S3.0  
TYPICAL FLATWORK / PAVEMENT DOWELS AT BUILDING



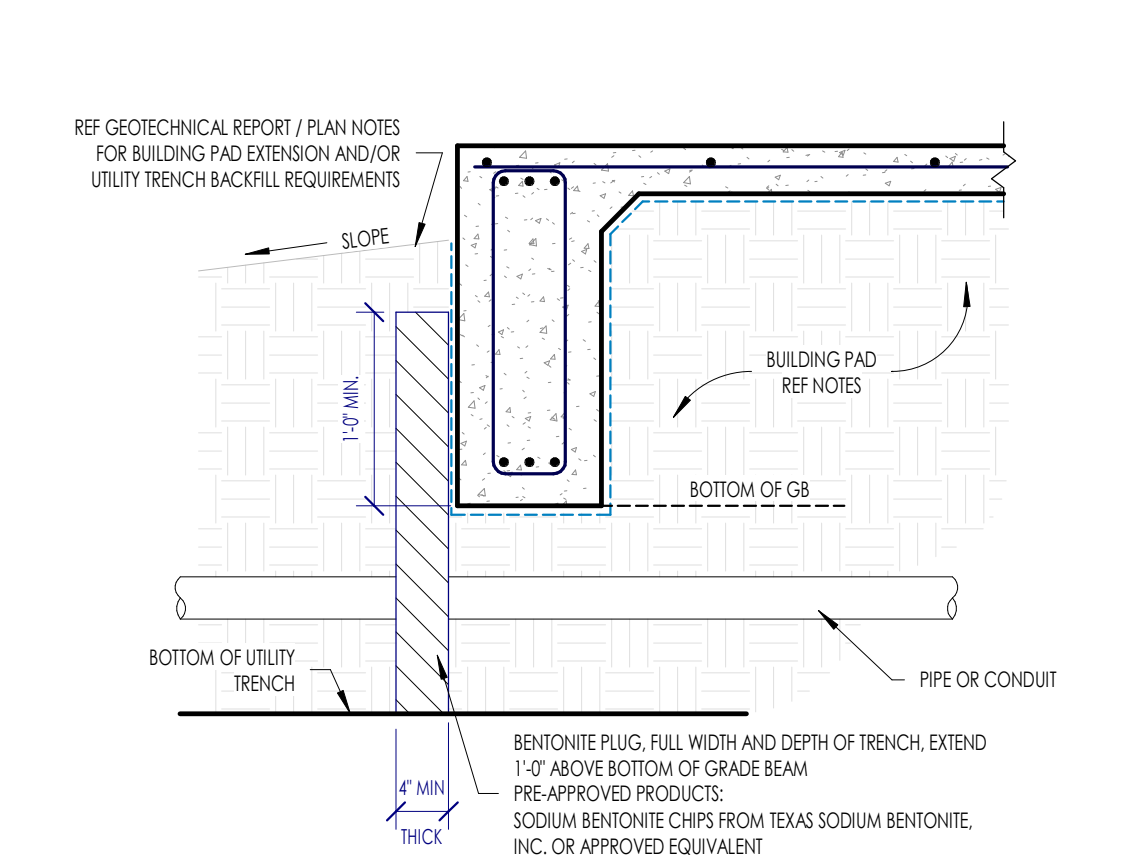
**6A**  
S3.0  
TYPICAL DROP TRANSITION IN GRADE BEAM - VERTICAL MOISTURE BARRIER



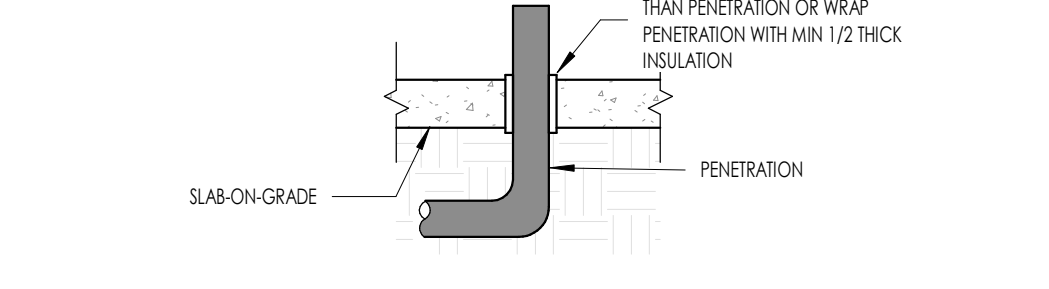
**4A**  
S3.0  
TYPICAL HORIZONTAL PENETRATION IN BEAM



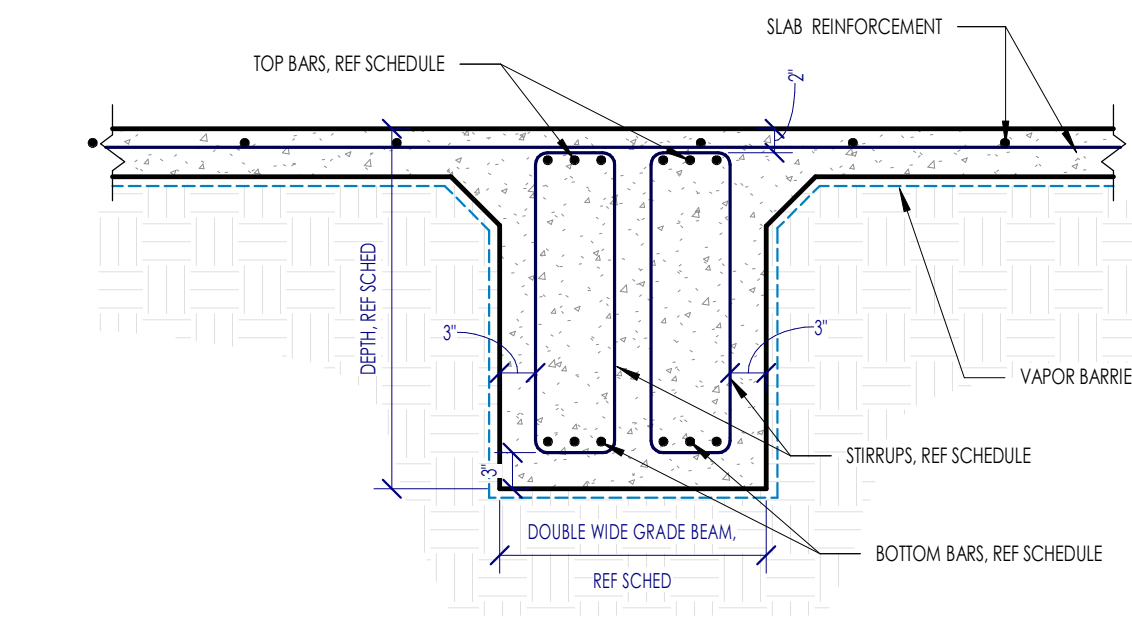
**4B**  
S3.0  
TYPICAL VERTICAL PENETRATION IN GRADE BEAM



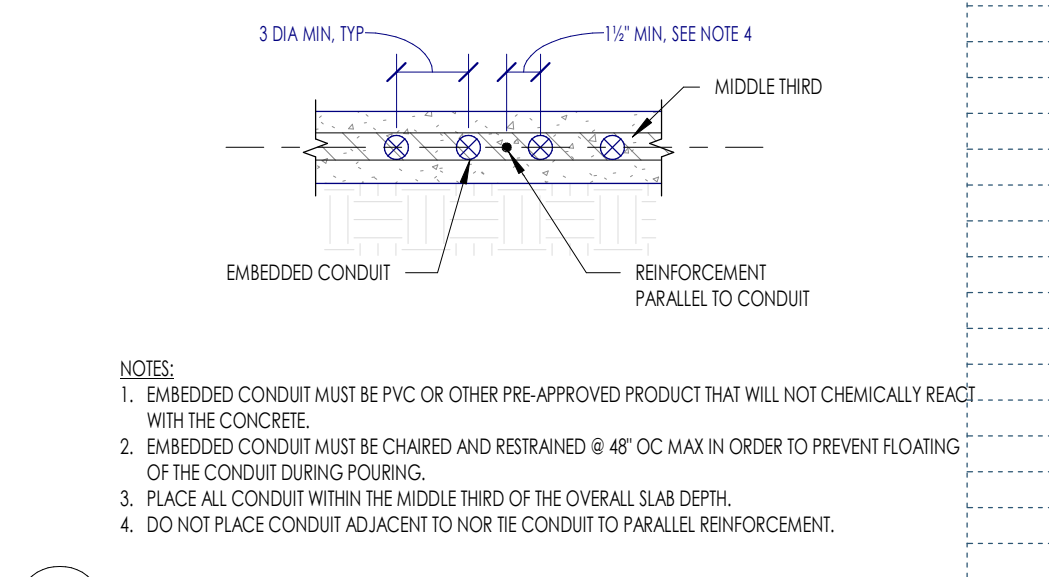
**2B**  
S3.0  
TYPICAL UTILITY TRENCH UNDER BUILDING PAD BENTONITE PLUG AT EXTERIOR BEAM



**1B**  
S3.0  
VERTICAL PENETRATION THROUGH SLAB-ON-GRADE



**2A**  
S3.0  
TYPICAL DOUBLE WIDE INTERIOR GRADE BEAM



**1A**  
S3.0  
TYPICAL CONDUITS EMBEDDED IN SLAB-ON-GRADE

Date	Description
06/10/2022	Issued for Permit