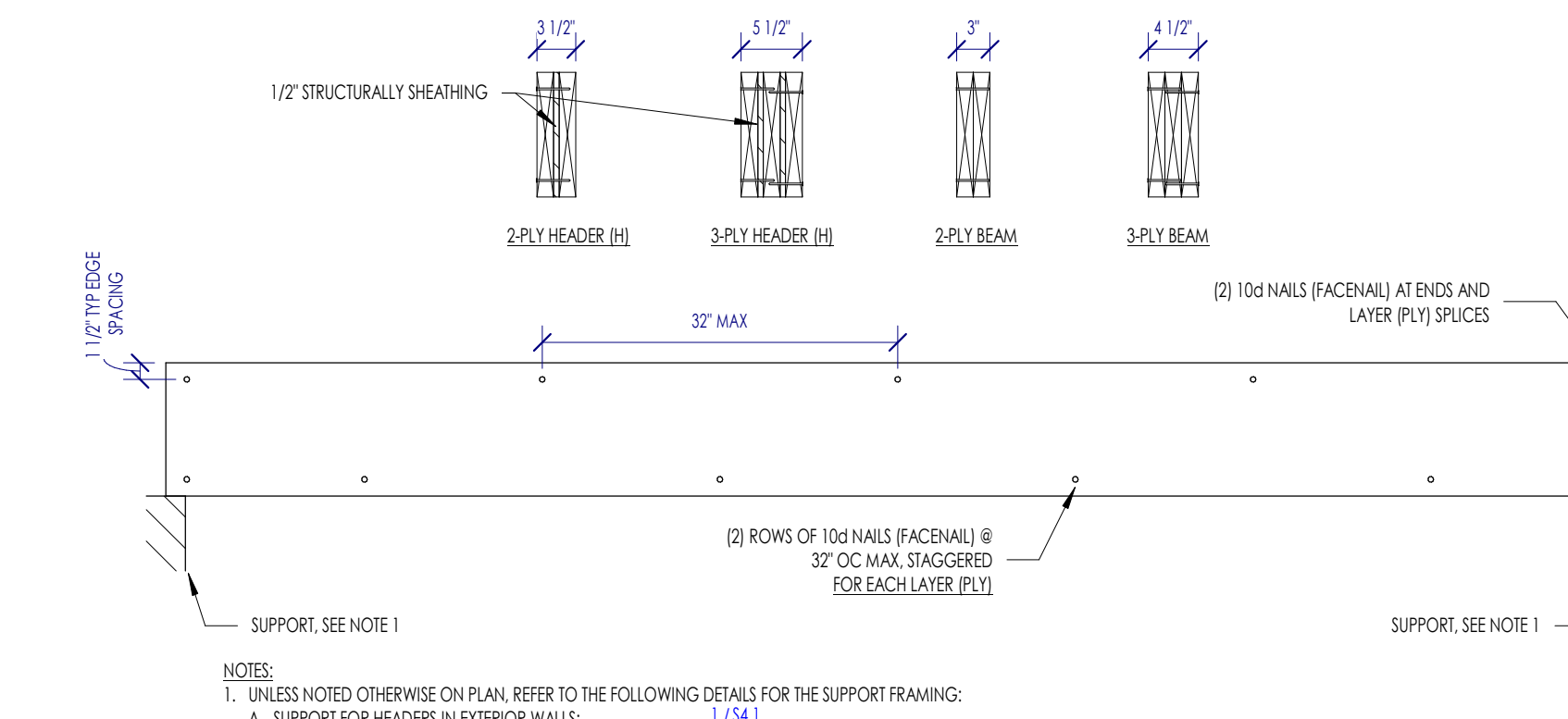
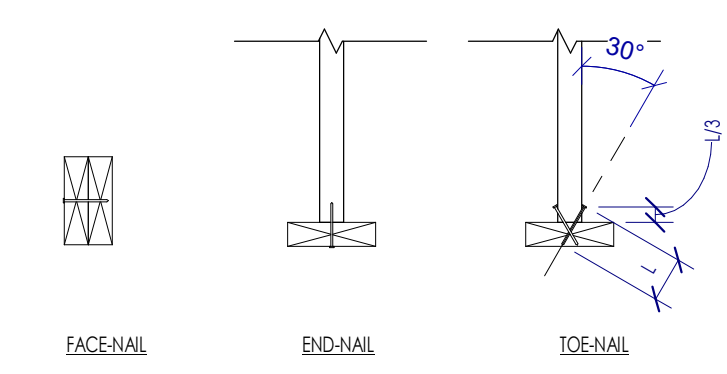
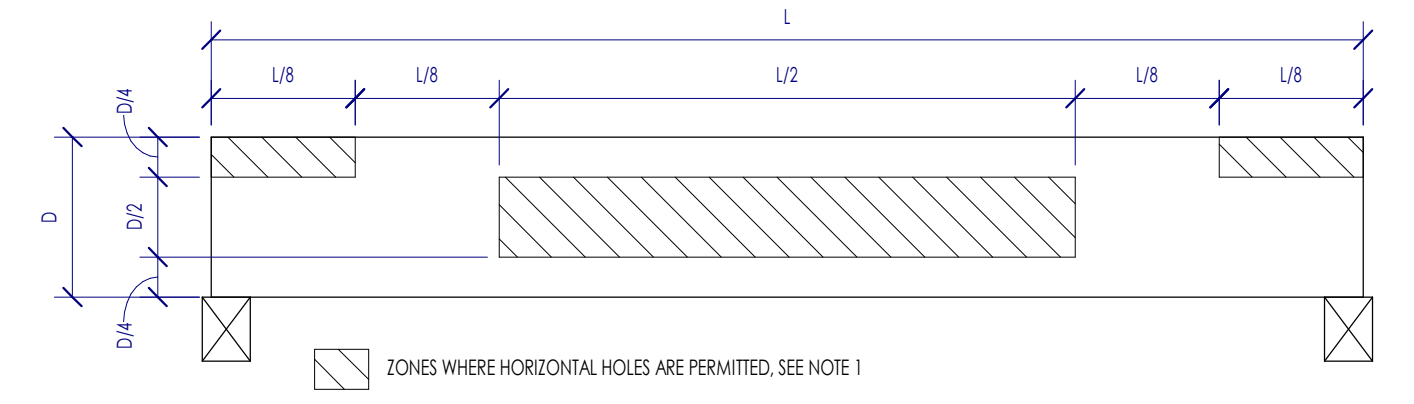


This project, like most OpeningDesign's projects, is open source (Attribution-ShareAlike 4.0 International-CC BY-SA 4.0)-freely available to any party for future use, assuming the terms such as Attribution and ShareAlike are honored.

TYPICAL FASTENING SCHEDULE

CONNECTION ID	CONNECTION TYPE	FASTENING	FASTENING ORIENTATION
1	JOIST TO RILL OR GIRDER	(1) - 0.131"Ø X 3"	TOENAIL
2	SOLE PLATE TO JOIST OR BLOCKING	0.148"Ø X 3 1/2" NAILS @ 12" OC NAILS	FACE NAIL
3	TOP PLATE TO STUD	(1) - 0.131"Ø X 3" NAILS	END NAIL
4	STUD TO SOLE PLATE - OPTION 1	(2) - 1/4" COMMON (2) - 0.131"Ø X 3" NAILS	END NAIL
5	STUD TO SOLE PLATE - OPTION 2	(4) 0.131"Ø X 3" NAILS	TOENAIL
6	DOUBLE/MULTIPLE STUDS	REFERENCE DETAIL 7/15A1	FACE NAIL
7	DOUBLE TOP PLATES	0.131"Ø X 3" NAILS @ 12" OC	FACE NAIL
8	DOUBLE TOP PLATE SPICE	REFERENCE DETAIL 10/15A1	FACE NAIL
9	BLOCKING BETWEEN JOISTS/RAFERS TO TOP PLATE	(1) - 0.131"Ø X 3" NAILS	TOENAIL
10	RIM JOIST TO TOP PLATE	0.131"Ø X 3" NAILS @ 6" OC	TOENAIL
11	CeILING JOIST TO TOP PLATE	(1) - 0.131"Ø X 3" NAILS	TOENAIL
12	CeILING JOIST LAP OVER PARTITION	(1) - 0.131"Ø X 3" NAILS	FACE NAIL
13	CeILING JOIST TO PARALLEL RAFTERS	(1) - 0.131"Ø X 3" NAILS	FACE NAIL
14	RAFTER TO TOP PLATE	(1) - 0.131"Ø X 3" NAILS	TOENAIL
15	BUILT-UP CORNER STUDS	0.131"Ø X 3" NAILS @ 14" OC	FACE NAIL
16	BUILT-UP BEAMS	REFERENCE DETAIL 4/15A0	FACE NAIL
17	COLLAR TIE TO RAFTER	(1) - 0.131"Ø X 3" NAILS	FACE NAIL
18	JACK RAFTER TO HP	(1) - 0.131"Ø X 3" NAILS	TOENAIL
19	RAFTER TO RIDGE BOARD/BEAM	(1) - 0.131"Ø X 3" NAILS	TOENAIL
20	BLOCKING AT STUDS	(1) - 0.131"Ø X 3" NAILS EACH SDC	TOENAIL

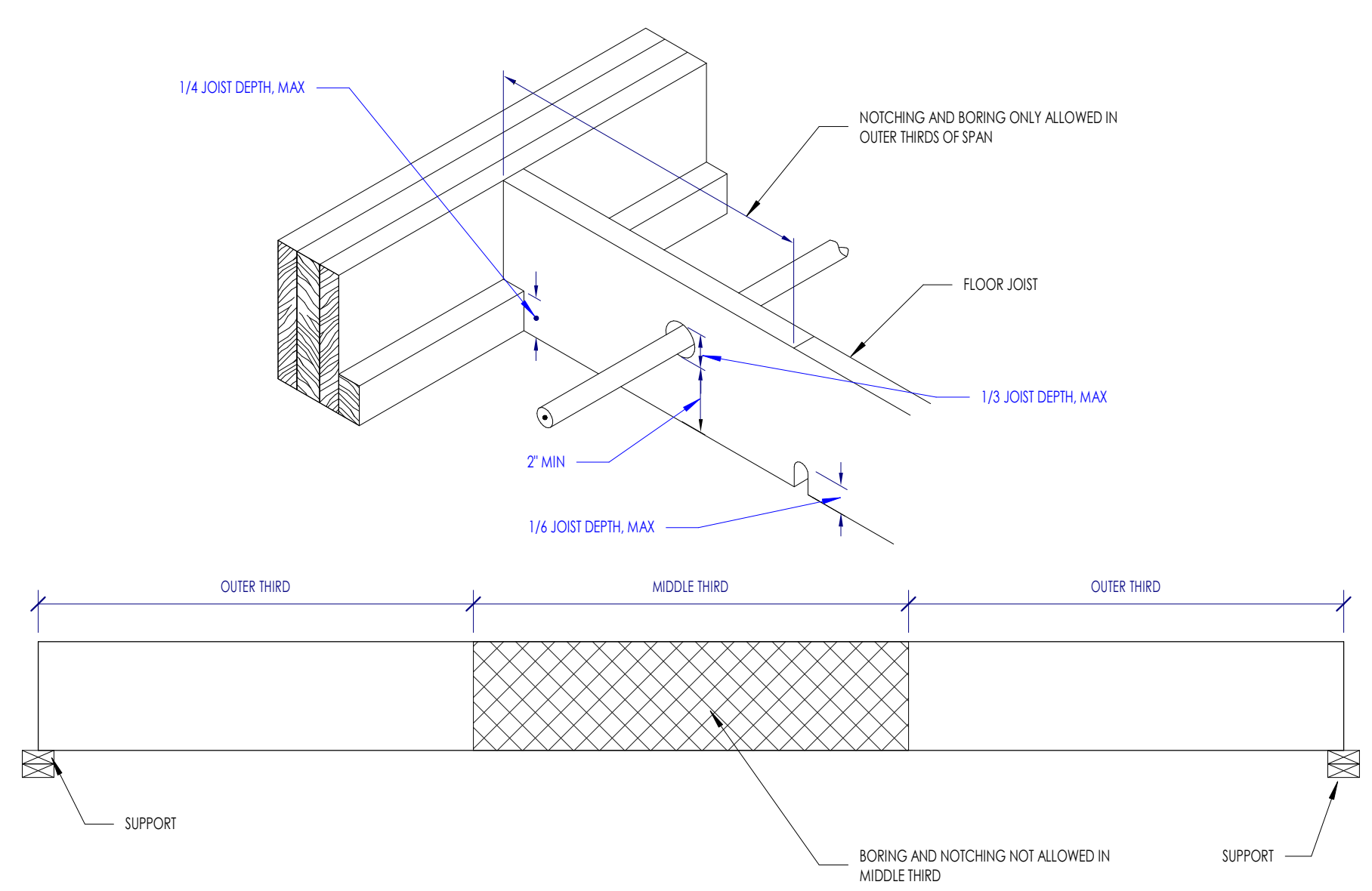


1 TYPICAL WOOD FASTENING SCHEDULE
NOT TO SCALE

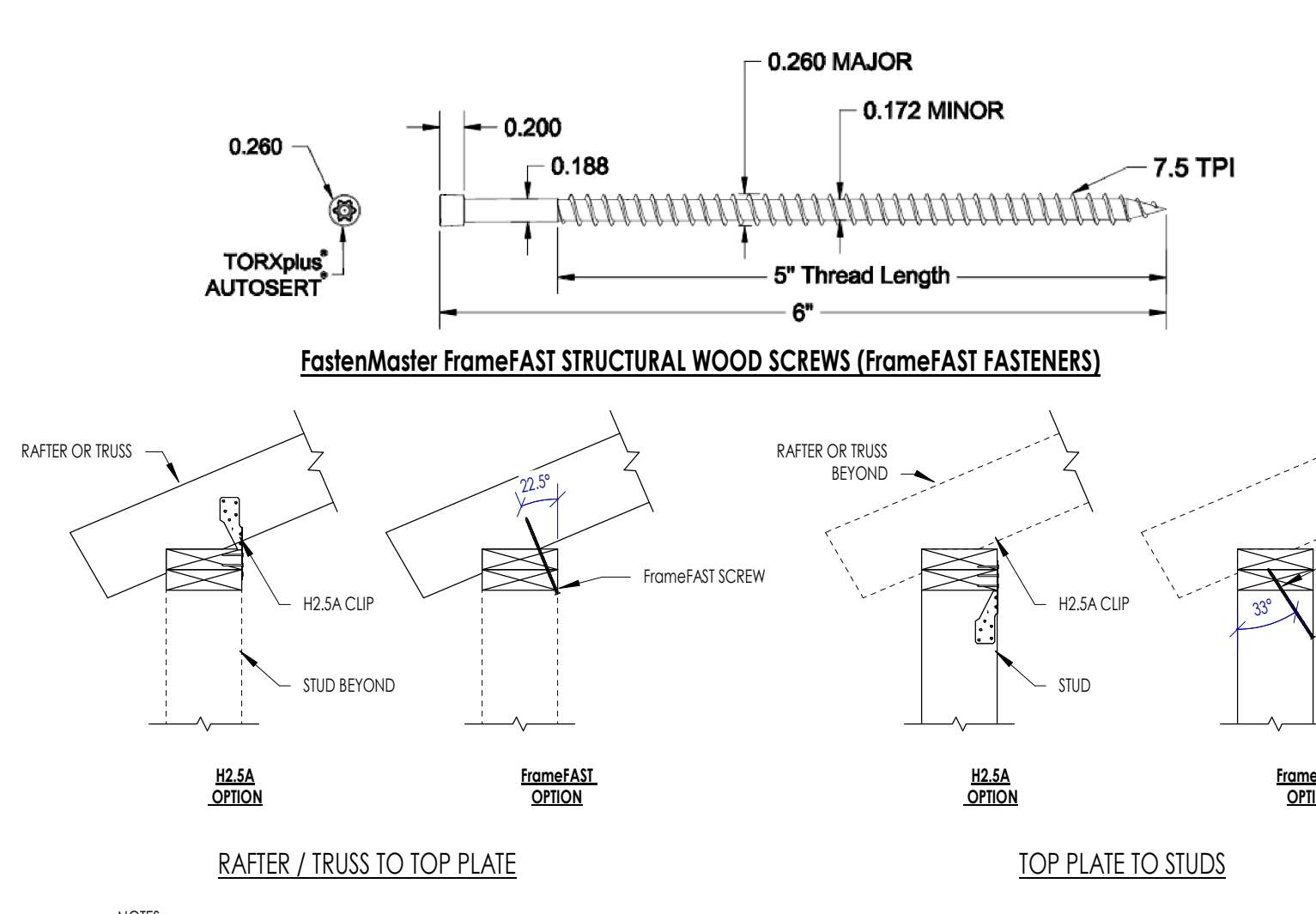
2 ALLOWABLE HORIZONTAL HOLE LOCATIONS IN GLUE LAMINATED TIMBER BEAMS
NOT TO SCALE

3 TYPICAL NAILING CONFIGURATIONS
NOT TO SCALE

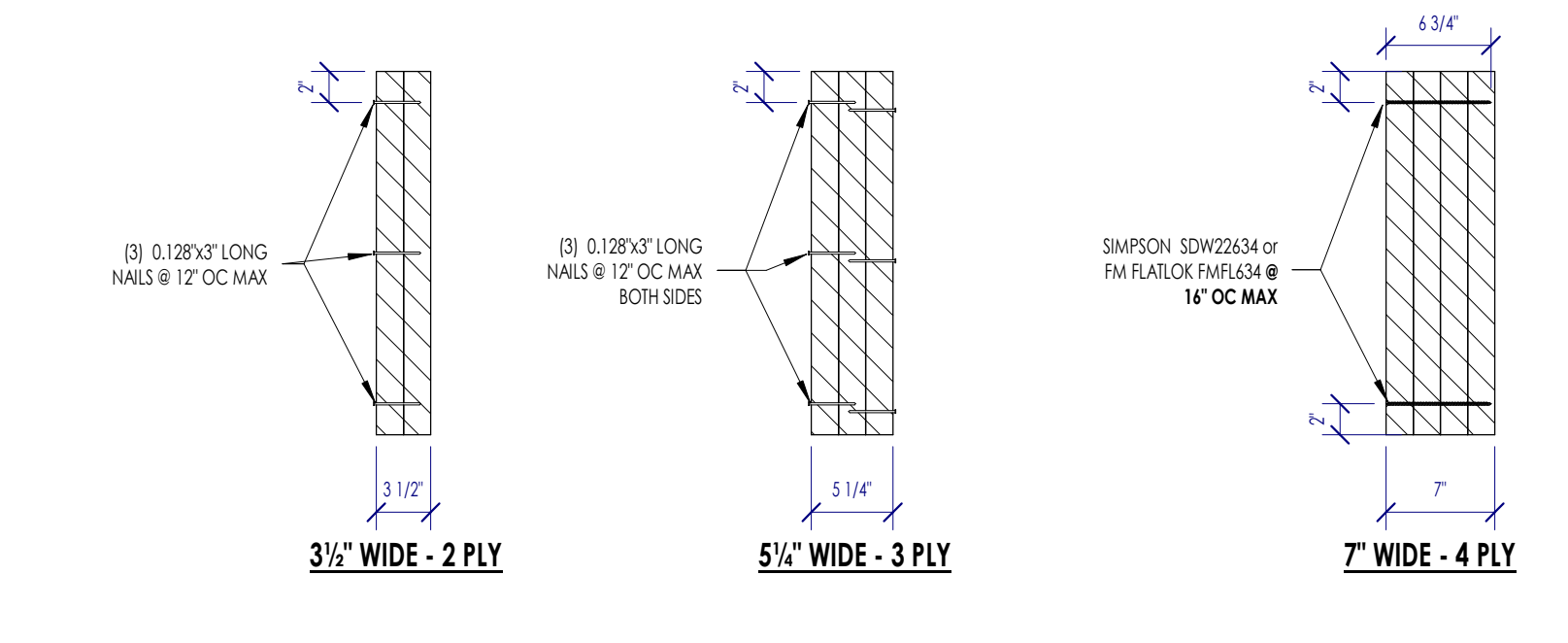
4 TYPICAL NAILING BUILT UP BEAMS, GIRDERS & HEADERS
NOT TO SCALE



5 ALLOWABLE NOTCHING AND BORING OF FLOOR JOISTS
NOT TO SCALE



6 ALLOWABLE SUBSTITUTION OF H2.5A CLIPS WITH FrameFAST SCREWS - UPLIFT LOAD PATH
NOT TO SCALE



7 TYPICAL LVL MULTIPLE PLY FASTENING REQUIREMENTS
NOT TO SCALE

FASTENER SCHEDULE - TO BEAM TOP FLANGE

L (ft)	PAF FASTENER	BOLT / ROD
< 0.35	XU 47 @ 12" OC	1/2"Ø @ 24" OC
0.35 < L ≤ 0.44	DS 47 @ 12" OC	1/2"Ø @ 24" OC
L > 0.44	N/A	1/2"Ø @ 12" OC

FASTENER SCHEDULE - TO BEAM WEB / BOTTOM FLANGE

L (ft)	PAF FASTENER	BOLT / ROD
< 0.35	XU 47 @ 12" OC	(2) - 1/2"Ø @ 24" OC
0.35 < L ≤ 0.44	DS 47 @ 12" OC	(2) - 1/2"Ø @ 24" OC
L > 0.44	N/A	(2) - 1/2"Ø @ 12" OC

NAILER SCHEDULE - TO BEAM FLANGE

d (ft)	NAILER SIZE
≤ 5.5	2x4
5.5 < d ≤ 7.25	2x6
d > 7.25	2x8

NAILER SCHEDULE - TO BEAM WEB

d (ft)	NAILER SIZE
5 < d ≤ 6.75	2x4
6.75 < d ≤ 8.75	2x6
8.75 < d ≤ 10.75	2x10
10.75 < d ≤ 15	(2) - 2x8
15 < d ≤ 19	(2) - 2x10
19 < d ≤ 23	(2) - 2x12
d > 23	(2) - 2x8

NOTES:
1. ALL FASTENERS SHALL BE SPACED PER SCHEDULE.
2. FASTENER DESCRIPTIONS, ALL FASTENERS ARE POWDER-ACTUATED FASTENERS MFG BY HILT, INC.:
A. XU 47
B. DS 47
C. UNIVERSAL ENKURLED SHANK FASTENER WITH A SHANK DIAMETER OF 0.131" AND A SHANK LENGTH OF 47 mm (1.85")
D. HEAVY DUTY SMOOTH SHANK FASTENER WITH A SHANK DIAMETER OF 0.131" AND A SHANK LENGTH OF 47 mm (1.85")
3. FASTENER INSTALLATION SHALL FOLLOW ALL SPECIFICATIONS PER THE MANUFACTURER.
4. THROUGH BOLTS SHALL BE GALVANIZED ASTM A307 BOLTS, THREADED ROD SHALL BE GALVANIZED ASTM F1554 GR 36.

10 WOOD NAILER TO TOP OF STRUCTURAL STEEL
NOT TO SCALE

