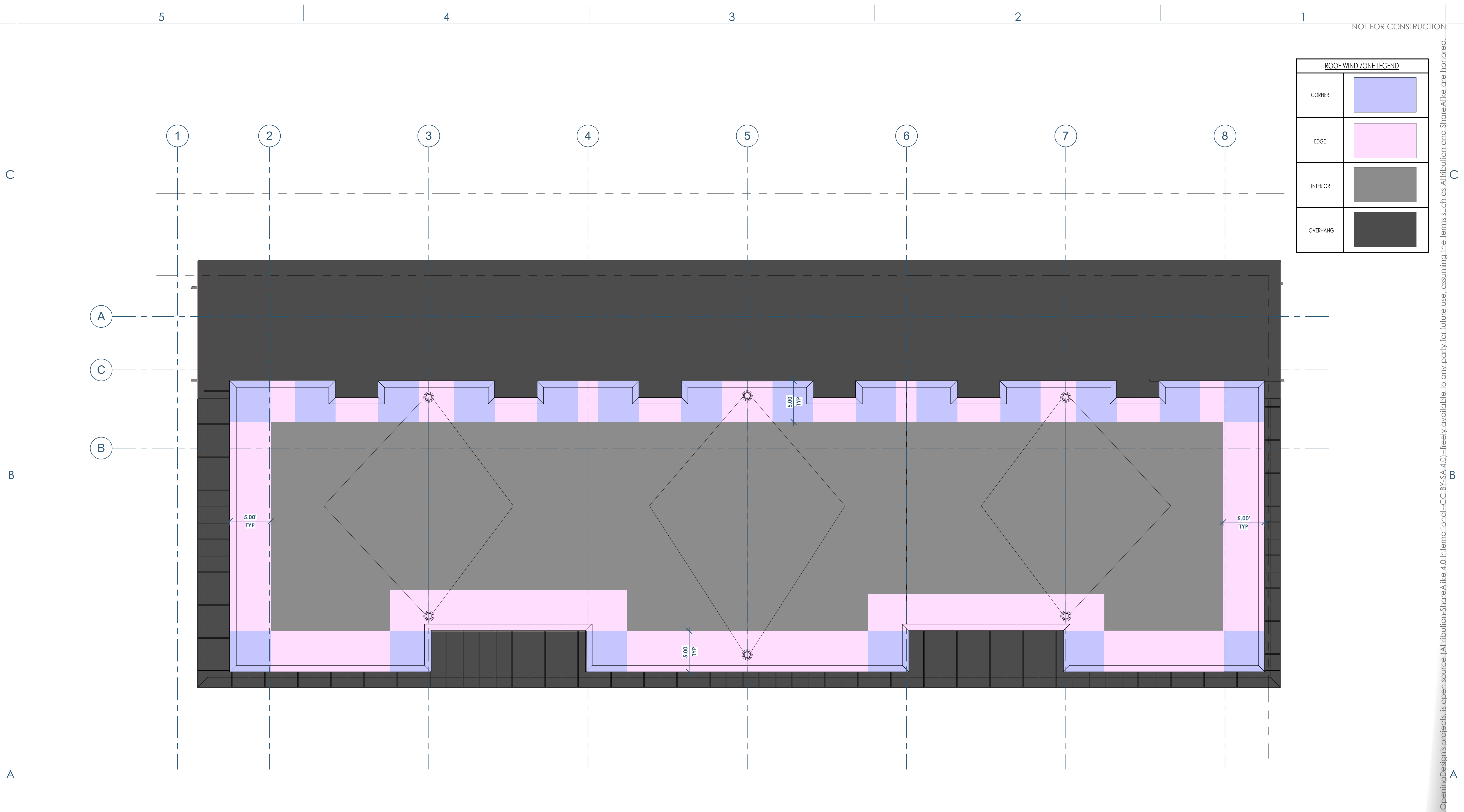


ROOF WIND ZONE LEGEND	
CORNER	
EDGE	
INTERIOR	
OVERHANG	



1 FLOOR PLAN - ROOF - Dependent 1
 TK100 3/16" = 1'-0"



Owner: Renovation Wranglers
 102 E 26th St
 Bryan, TX 77803
 Kafeneason@me.com | 979.450.9969

Architect of Record: LKB Architecture
 2929 Allen Pkwy Suite 200
 Houston, TX 77019
 lisa@lkbarchitecture.com | 713.425.3076

Civil: Glenn Jones - J4 Engineering
 1135 N. Earl Rudder Frwy, Suite 100
 Bryan, Texas 77805
 gjones@j4engineering.com | 979.739.0567

Architect: Ryan Schultz - OpeningDesign
 17 S Fairchild St | FL 7
 Madison, WI 53703
 ryan@openingdesign.com | 773.425.6456

COMPONENTS AND CLADDING PLAN - 03.17.2022
 MARCO POLO - 101 W 33RD STREET
 BRYAN, TX 77803

TK100

This project, like most OpeningDesign's projects, is open source. (Attribution-ShareAlike 4.0 International) - CC BY-SA 4.0 - freely available to any party for future use...assuming the terms such as Attribution and ShareAlike are honored.