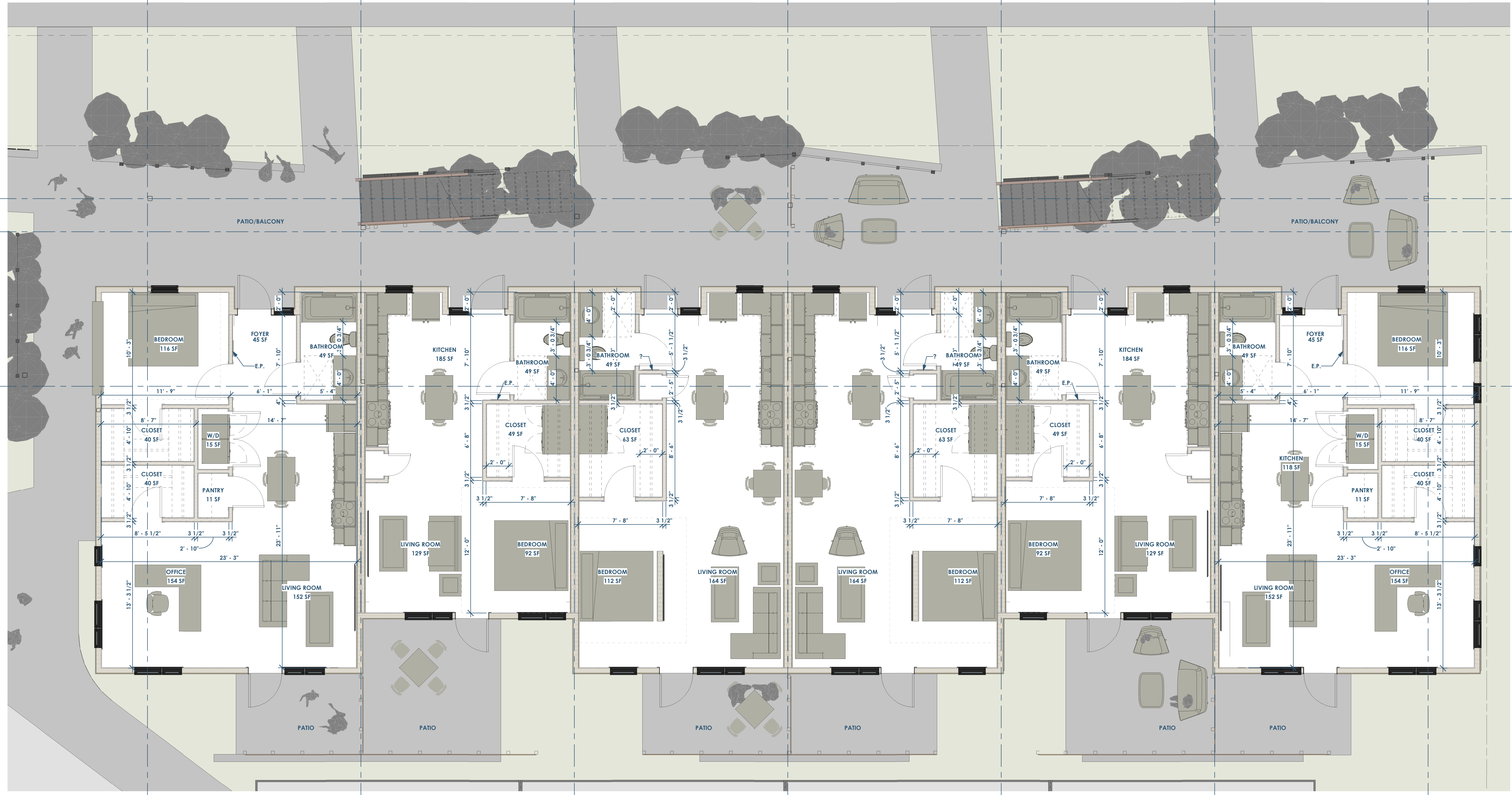


RENOVATION  
Wranglers  
Engineers  
Owner: Renovation Wranglers  
102 E 26th St  
Bryan, TX 77803  
Kateneason@wrangler.com | 979.450.9969

ARCHITECTURE  
Architect of Record: LKB Architecture  
2929 Allen Pkwy Suite 200  
Houston, TX 77019  
isa@lkbarchitecture.com | 713.425.3076

STRUCTURE  
DUDLEY  
Structural: Dudley  
6102 Imperial Loop Drive  
College Station, TX 77845  
(979) 777-0720

MEP  
amc  
ENGINEERS  
MEP: AMC Engineers  
508 E Jackson St # 552  
Burnet, TX 78611  
info@amcengineers.com



A101 01 - FLOOR PLAN - 1ST FLOOR  
1/4" = 1'-0"

This project, like most OpeningDesign's projects, is open source (Attribution-ShareAlike 4.0 International-CC BY-SA 4.0)-freely available to any party for future use, assuming the terms such as Attribution and ShareAlike are honored.

openingdesign  
Architect: OpeningDesign  
17 S Fairchild | FL 7  
Madison, WI 53703  
ryan@openingdesign.com | 773.425.6456

Date	Description
02.22.2022	Progress DD Set

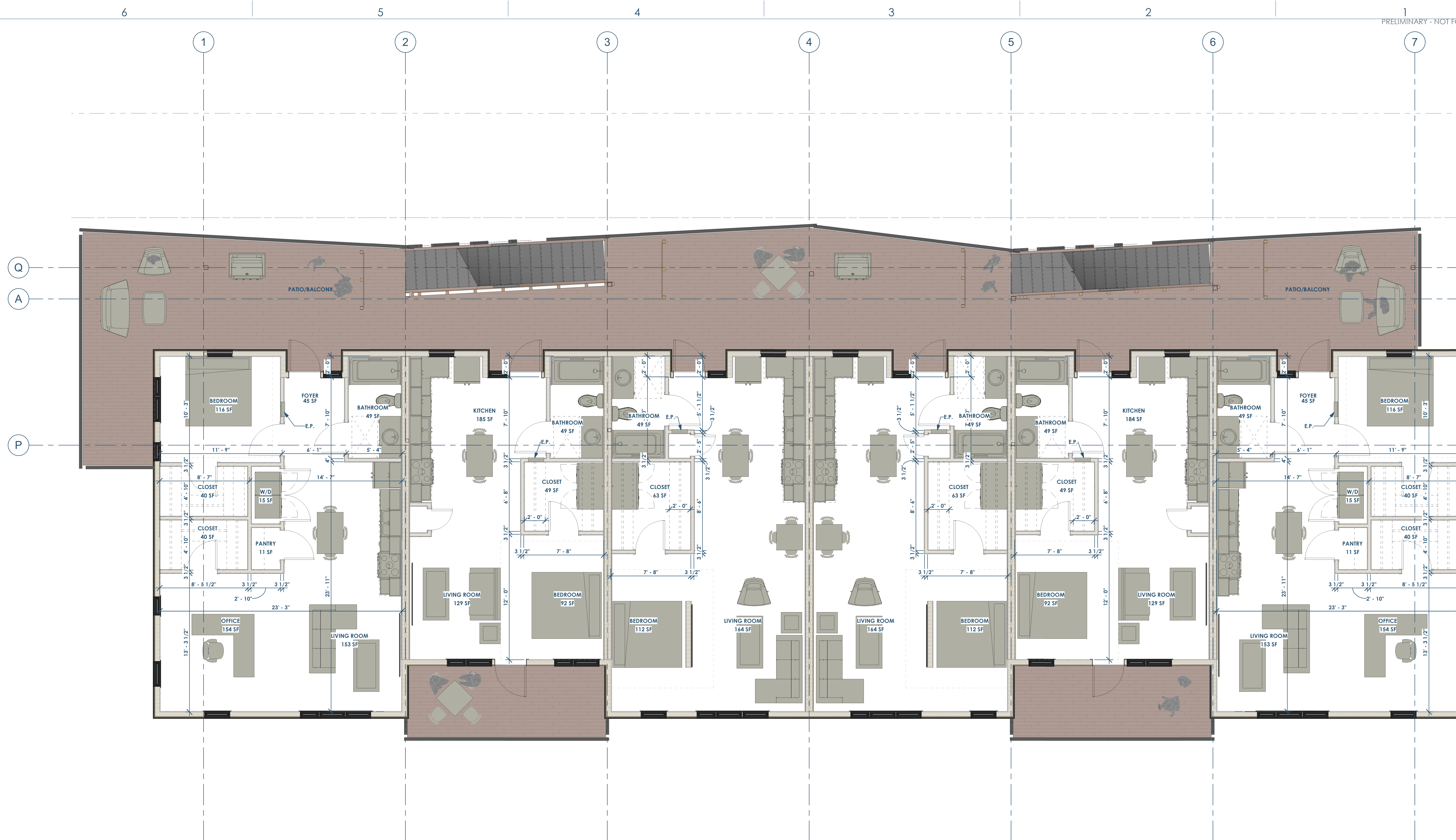
RENOVATION  
Wranglers  
ENGINEERS  
Owner: Renovation Wranglers  
102 E 26th St  
Bryan, TX 77803  
Kateneason@wranglers.com | 979.450.9969

LKB  
ARCHITECTURE  
Architect of Record: LKB Architecture  
2929 Allen Pkwy Suite 200  
Houston, TX 77019  
isa@lkbarchitecture.com | 713.425.3076

DUDLEY  
Structural: Dudley  
6102 Imperial Loop Drive  
College Station, TX 77845  
(979) 777-0720

amc  
ENGINEERS  
MEP: AMC Engineers  
508 E Jackson St # 552  
Burnet, TX 78611  
info@amcengineers.com

This project, like most OpeningDesign's projects, is open source (Attribution-ShareAlike 4.0 International-CC BY-SA 4.0)-freely available to any party for future use, assuming the terms such as Attribution and ShareAlike are honored.



1  
A102  
O1 - FLOOR PLAN - 2ND FLOOR  
1/4" = 1'-0"

openingdesign  
Architect: OpeningDesign  
17 S Fairchild | FL 7  
Madison, WI 53703  
ryan@openingdesign.com | 773.425.6456

Date	Description
02.22.2022	Progress DD Set







This project, like most OpeningDesign's projects, is open source. Attribution and ShareAlike are honored.

6 5 4 3 2 1

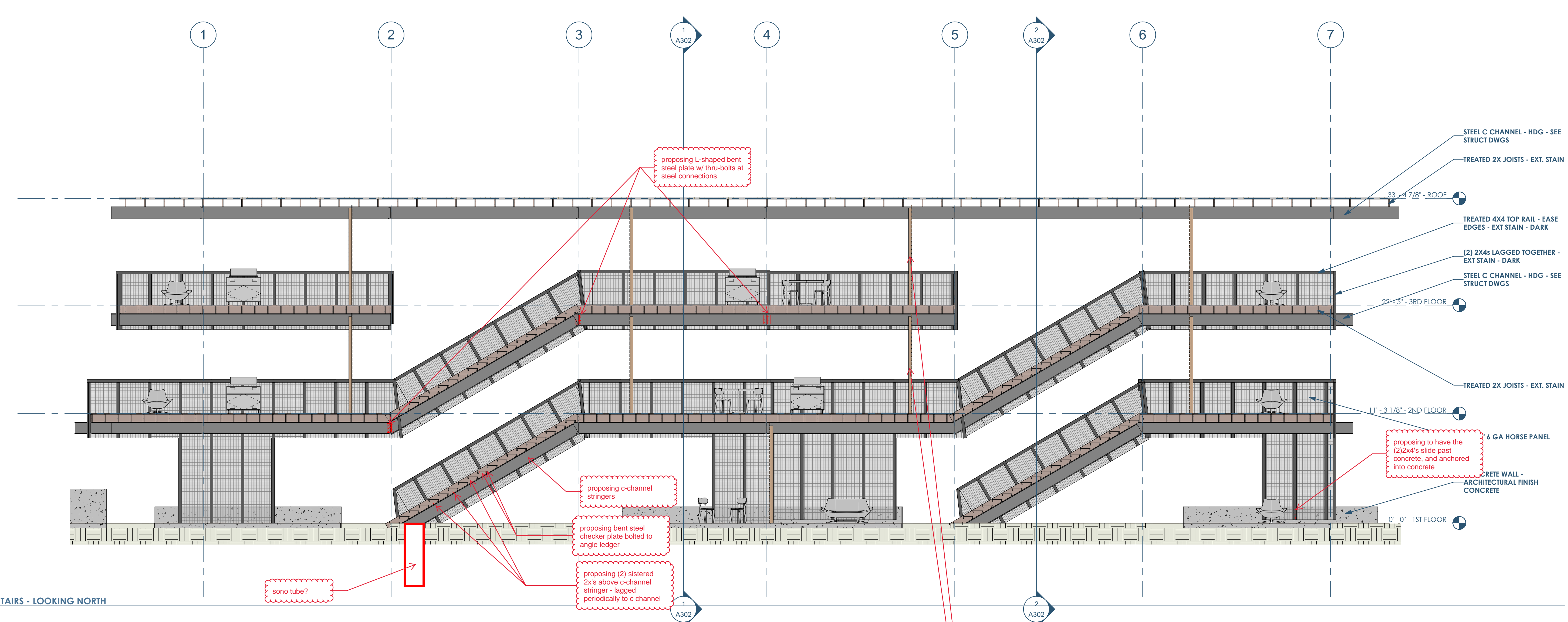
E

D

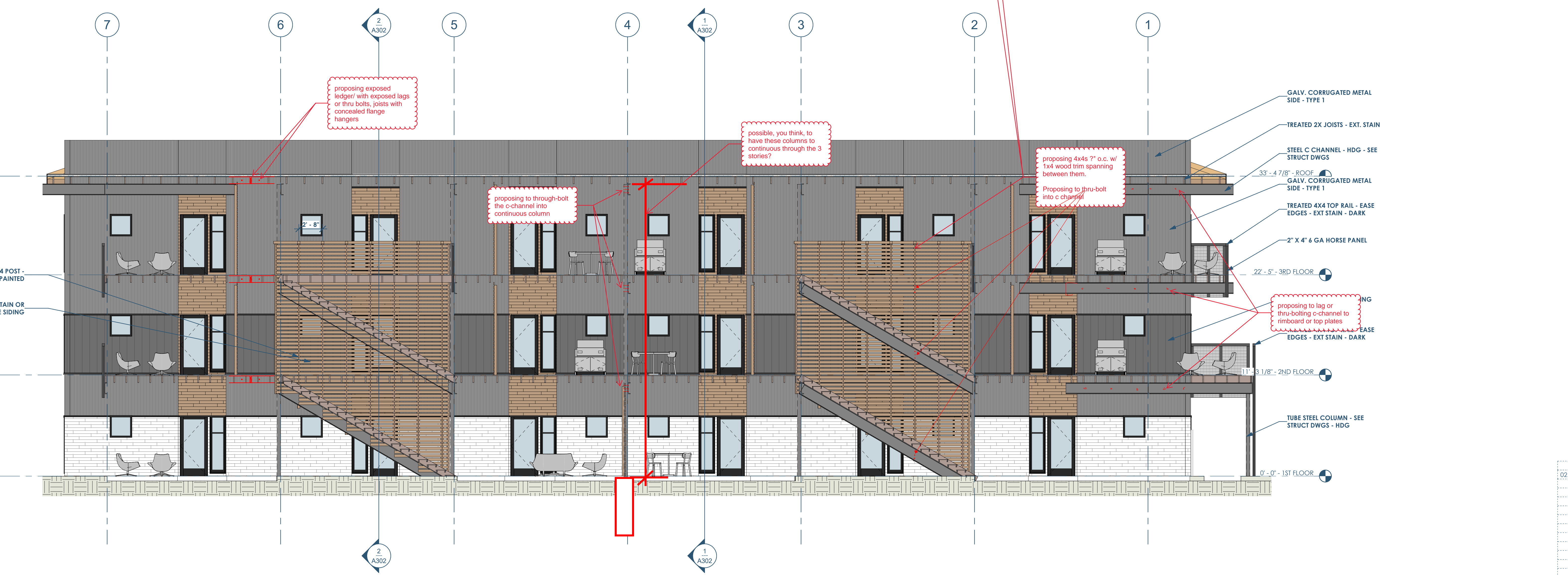
C

B

A



1 A300 BUILDING SECTION - THROUGH STAIRS - LOOKING NORTH  
3/16" = 1'-0"



2 A300 BUILDING SECTION - THROUGH STAIRS - LOOKING SOUTH  
3/16" = 1'-0"

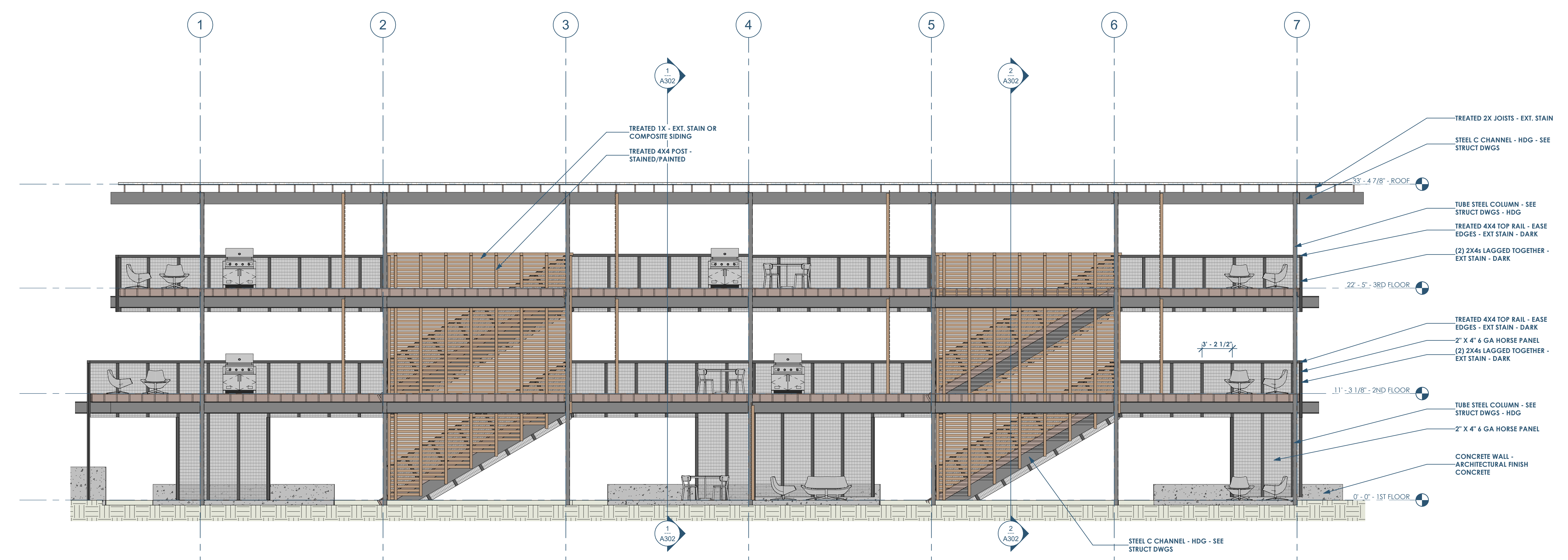
6 5 4 3 2 1

Date	Description
02.22.2022	Progress DD Set

This project, like most OpeningDesign's projects, is open source (Attribution-ShareAlike 4.0 International-CC BY-SA 4.0)-freely available to any party for future use, assuming the terms such as Attribution and ShareAlike are honored.



1 A301 BUILDING SECTION - THRU BALCONY - LOOKING SOUTH  
3/16" = 1'-0"



2 A301 BUILDING SECTION - THRU BALCONY - LOOKING NORTH  
3/16" = 1'-0"

Date	Description
02.22.2022	Progress DD Set

**RENOVATION**  
Wranglers  
Engineers

Owner: Renovation Wranglers  
102 E 26th St  
Bryan, TX 77803  
Katherine@wranglers.com | 979.450.9969

**LKB**  
ARCHITECTURE

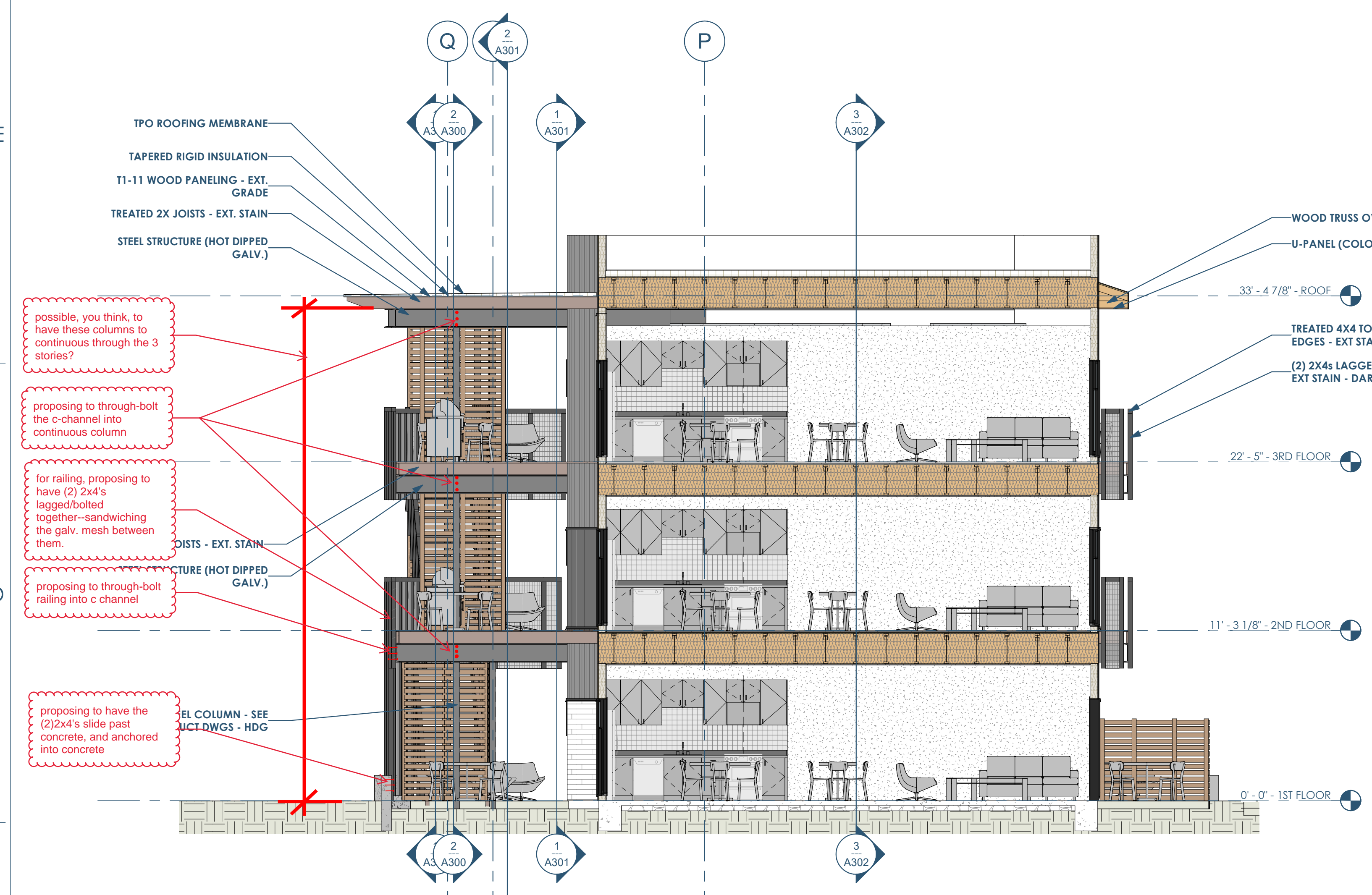
Architect of Record: LKB Architecture  
2929 Allen Pkwy Suite 200  
Houston, TX 77019  
isa@lkbarchitecture.com | 713.425.3076

**DUDDLEY**

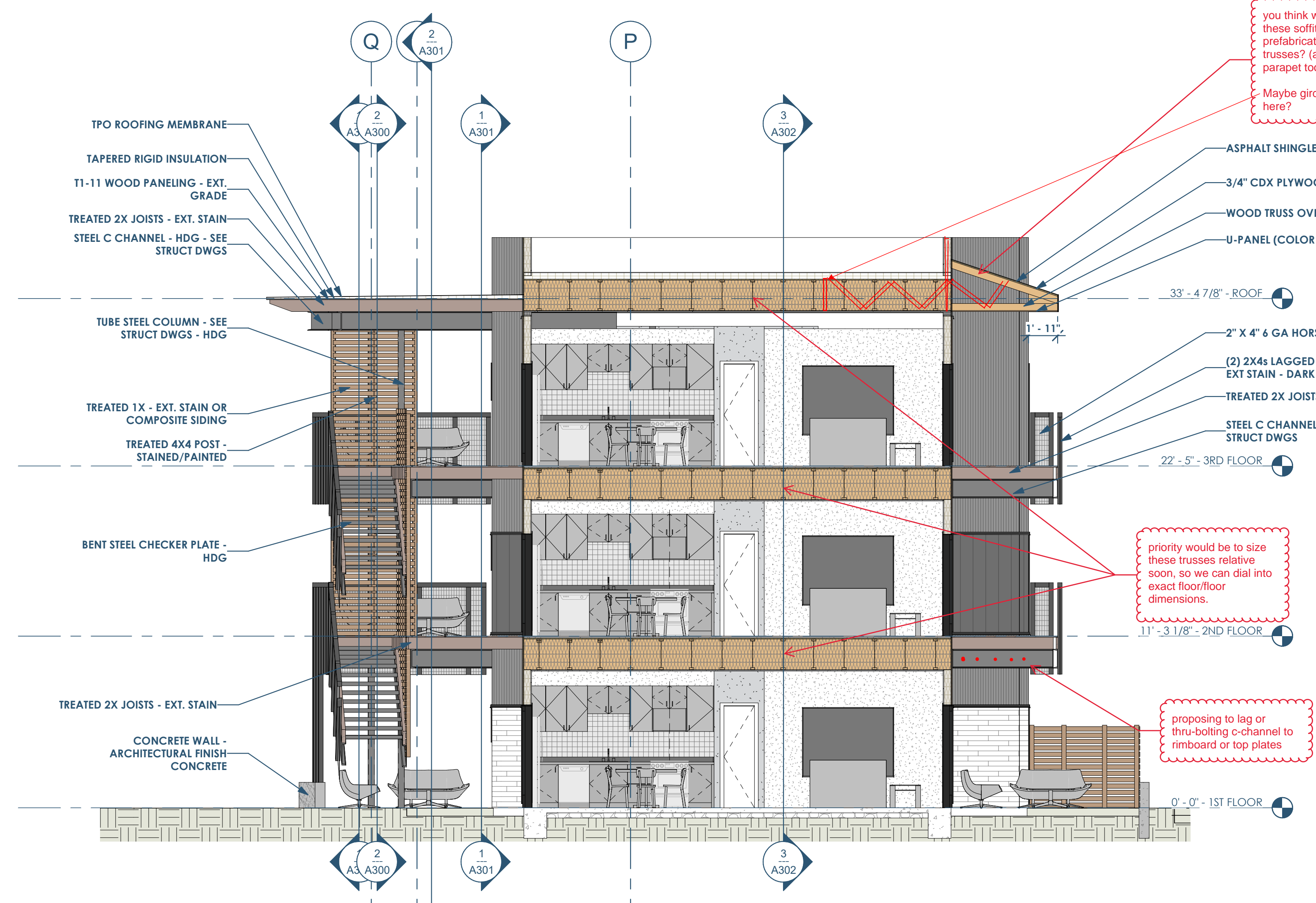
Structural: Dudley  
4102 Imperial Loop Drive  
College Station, TX 77845  
(979) 777-0720

**amc**  
ENGINEERS

MEP: AMC Engineers  
508 E Jackson St # 552  
Burnet, TX 78611  
info@amcengineers.com



1 BUILDING SECTION - THRU LARGE STUDIO - LOOKING EAST  
3/16" = 1'-0"



2 BUILDING SECTION - THRU SMALL STUDIO - LOOKING EAST  
3/16" = 1'-0"



3 BUILDING SECTION - EAST/WEST - LOOKING SOUTH  
3/16" = 1'-0"

you think we could frame these soffits out of prefabricated roof trusses? (along with parapet too)  
Maybe girder truss back here?

priority would be to size these trusses relative soon, so we can dial into exact floor/floor dimensions.

proposing to lag or thru-bolting c-channel to rimboard or top plates

proposing top-loading trusses... thoughts?

This project, like most OpeningDesign's projects, is open source (Attribution-ShareAlike 4.0 International-CC BY-SA 4.0)-freely available to any party for future use, assuming the terms such as Attribution and ShareAlike are honored.

Date	Description
02/22/2022	Progress DD Set

**openingdesign**

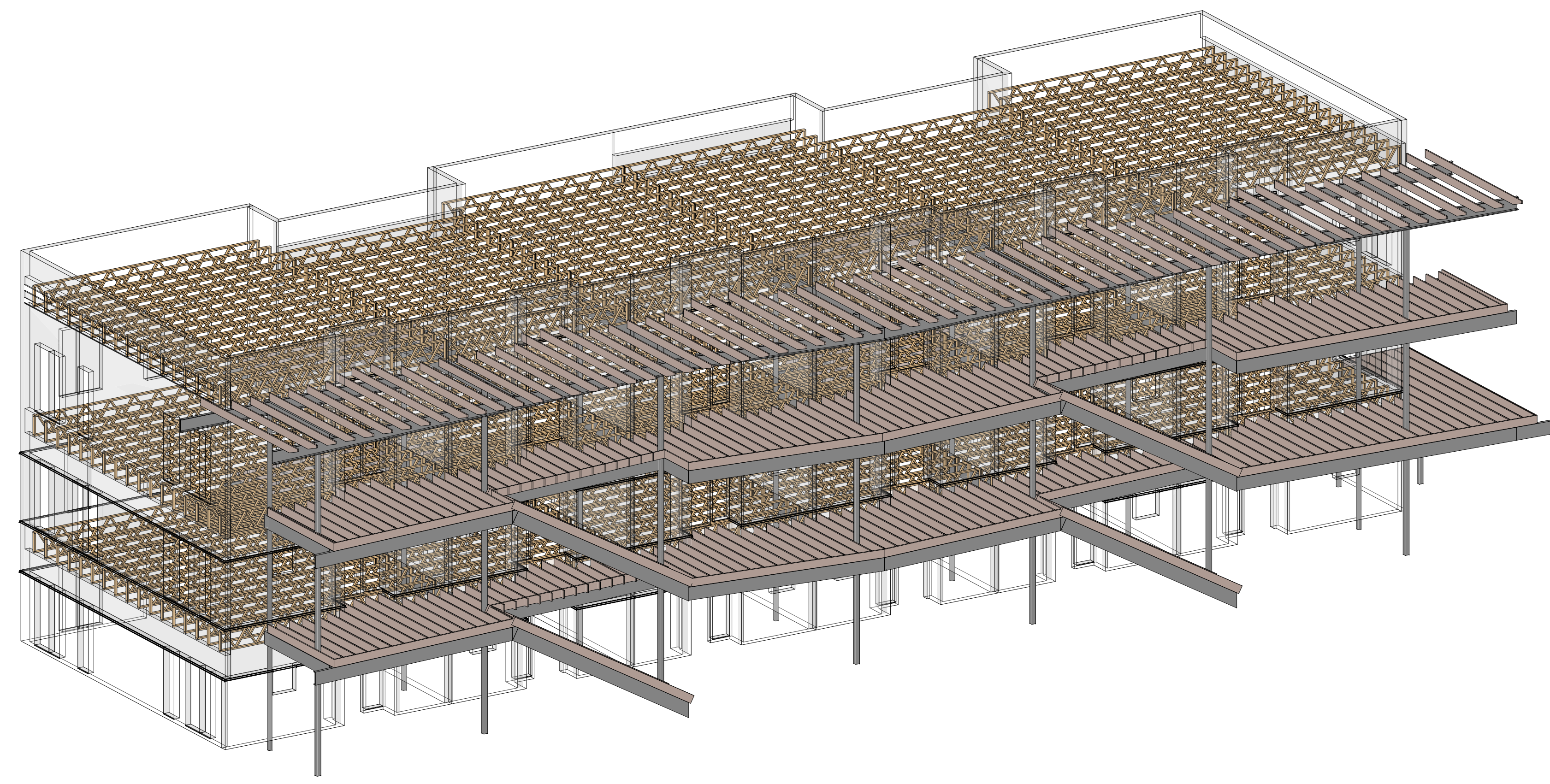
Architect: OpeningDesign  
17 S Fairchild | FL 7  
Madison, WI 53703  
ryan@openingdesign.com | 773.425.6456



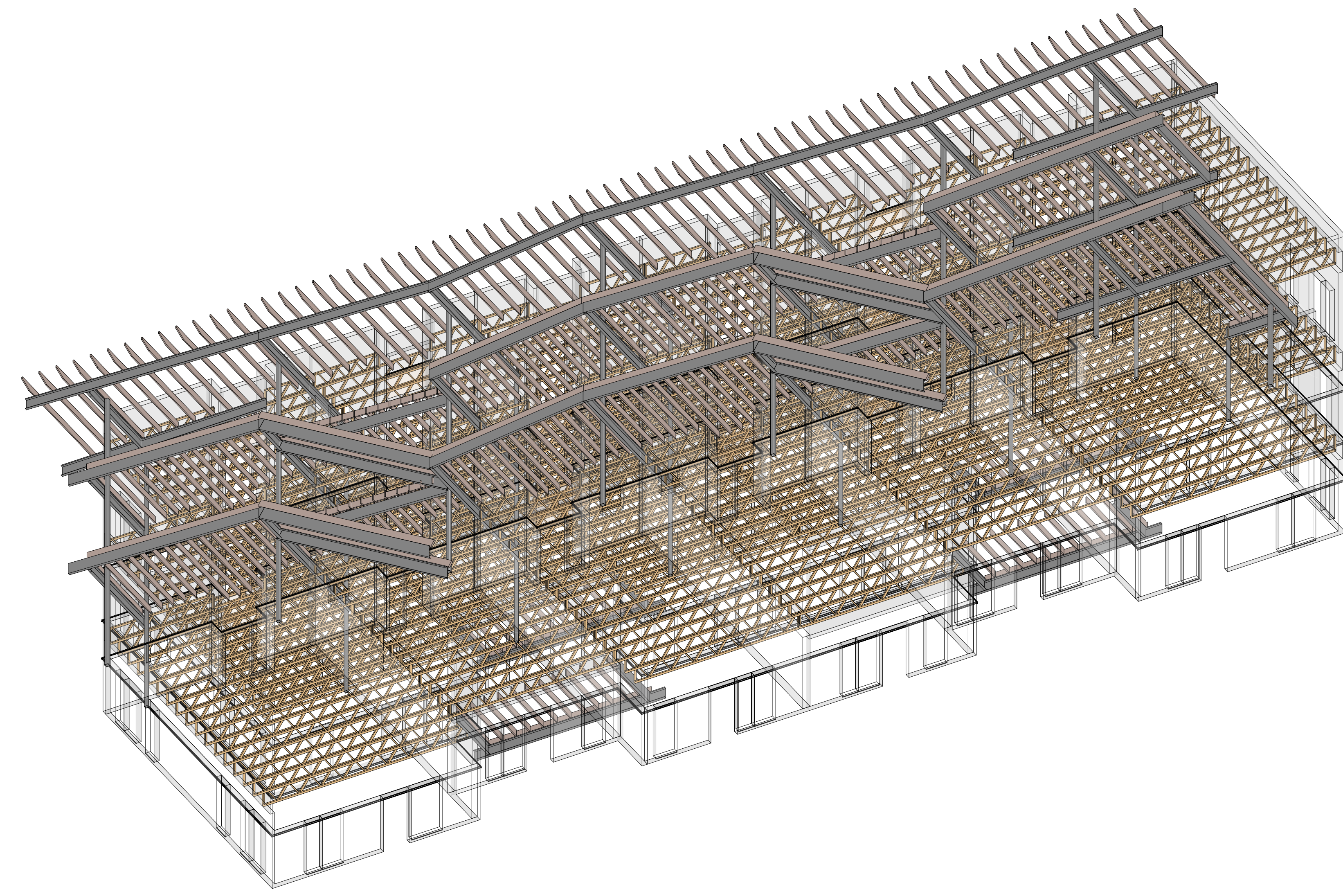








1 STRUCTURAL FRAMING - 3D - 1  
S900



2 STRUCTURAL FRAMING - 3D - 2  
S900

Owner: Renovation Wranglers  
102 E 26th St  
Bryan, TX 77803  
Kateneason@me.com | 979.450.9969

ARCHITECTURE  
Architect of Record: LKB Architecture  
2929 Allen Pkwy Suite 200  
Houston, TX 77019  
isa@lkbarchitecture.com | 713.425.3076

STRUCTURAL  
DUDLEY  
Structural: Dudley  
6102 Imperial Loop Drive  
College Station, TX 77845  
(979) 777-0720

MEP: AMC Engineers  
508 E Jackson St # 552  
Burnet, TX 78611  
info@amcengineers.com

This project, like most OpeningDesign's projects, is open source (Attribution-ShareAlike 4.0 International-CC BY-SA 4.0)-freely available to any party for future use, assuming the terms such as Attribution and ShareAlike are honored.

openingdesign  
Architect: OpeningDesign  
17 S Fairchild | FL 7  
Madison, WI 53703  
ryan@openingdesign.com | 773.425.6456

Date	Description
02.22.2022	Progress DD Set