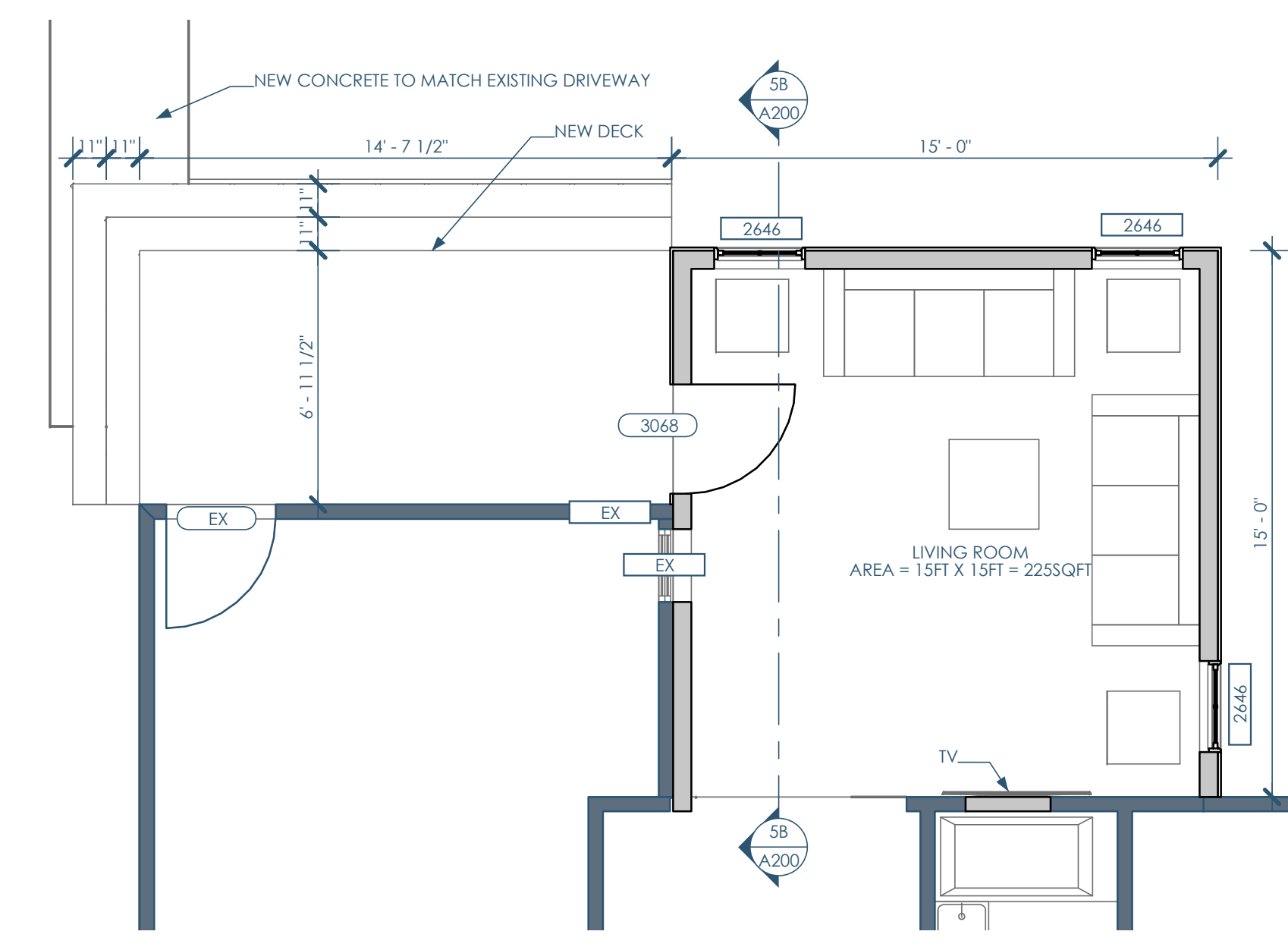
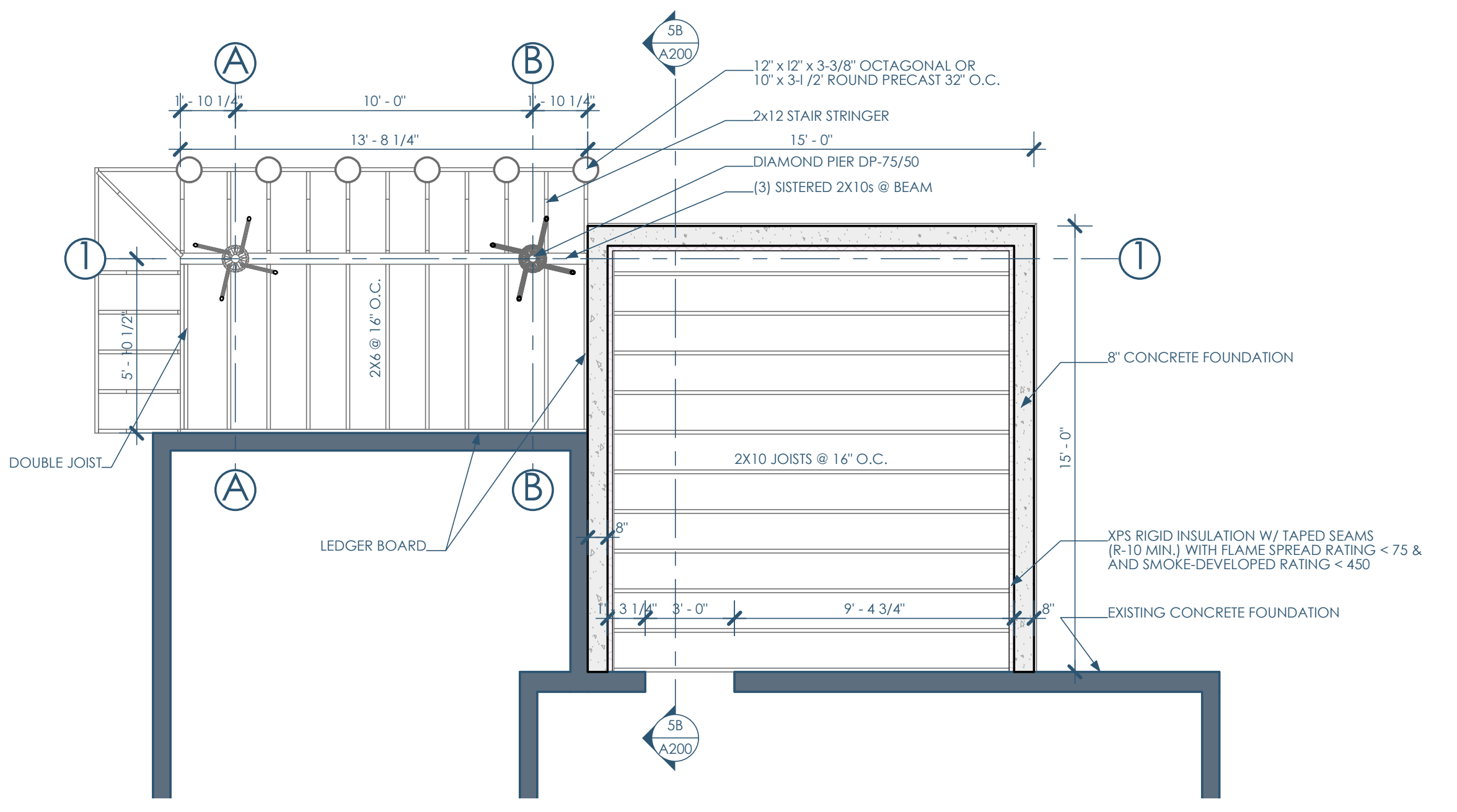


TOTAL SQ = 6556 SQF  
 EXISTING DRIVEWAY & EXISTING PATHWAY = 1006 SQFT  
 BUILDING AREA = 1284 SQFT  
 TOTAL USED AREA = 1284 + 1006 = 2290 SQFT  
 LOT COVERAGE = (2290 / 6556) = 35%

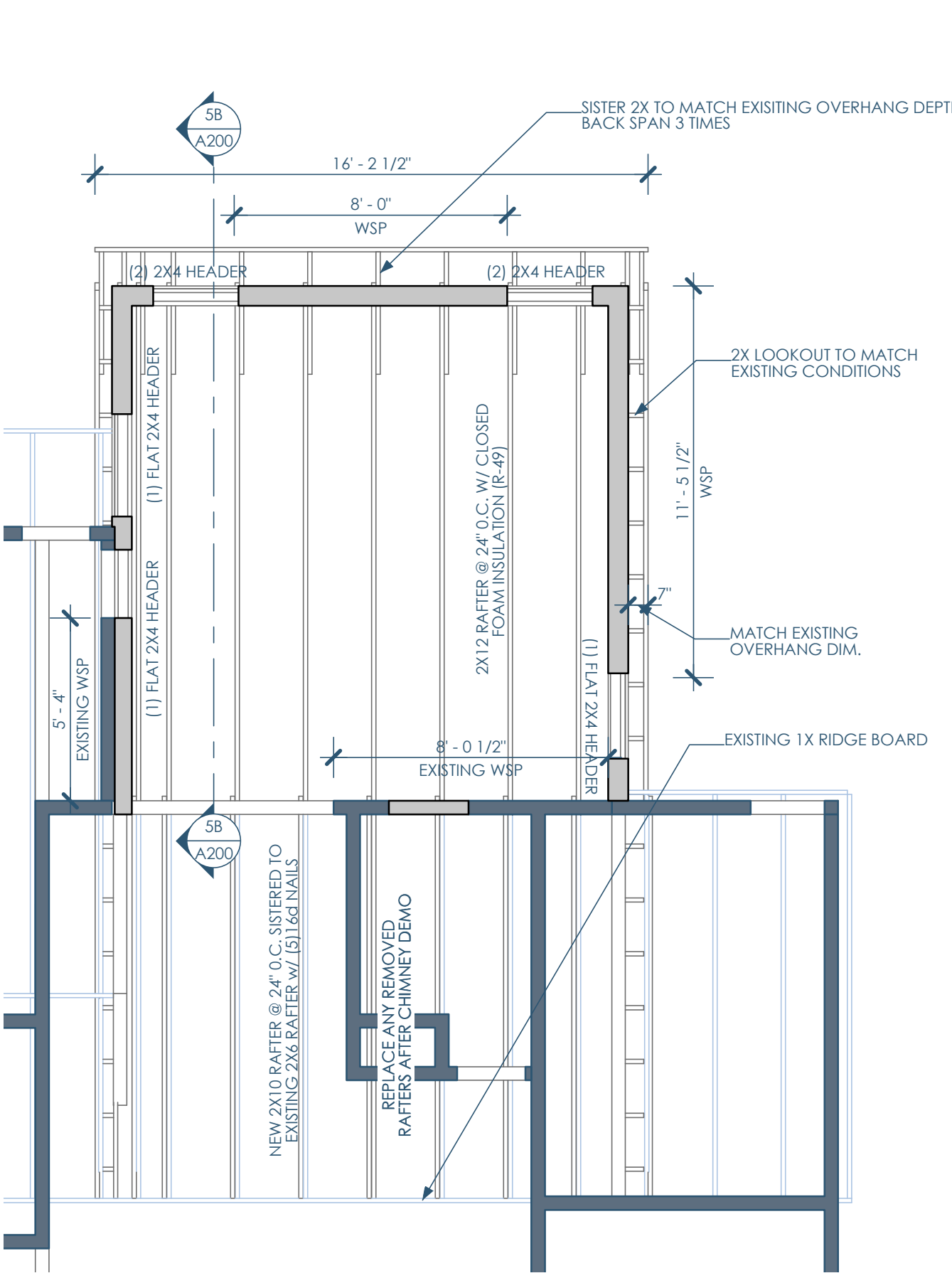
5A/A100 SITE PLAN  
 1/8"=1'-0"



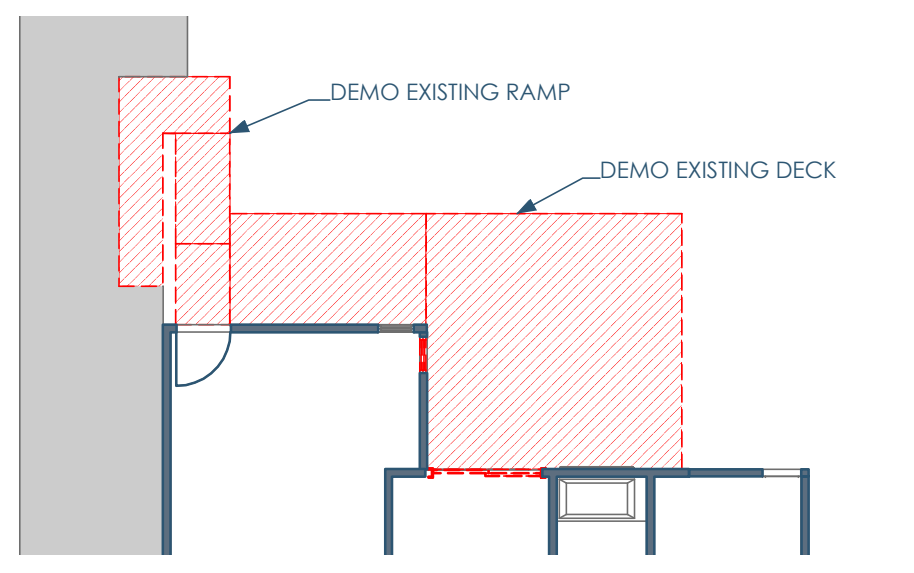
4C/A100 FLOOR PLAN  
 1/4"=1'-0"



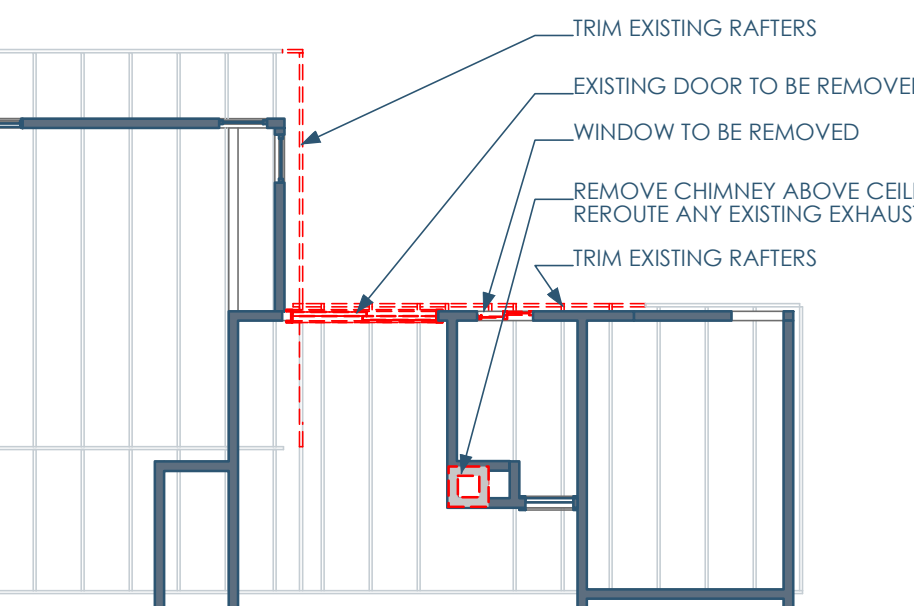
2B/A100 FLOOR FRAMING RCP  
 1/4"=1'-0"



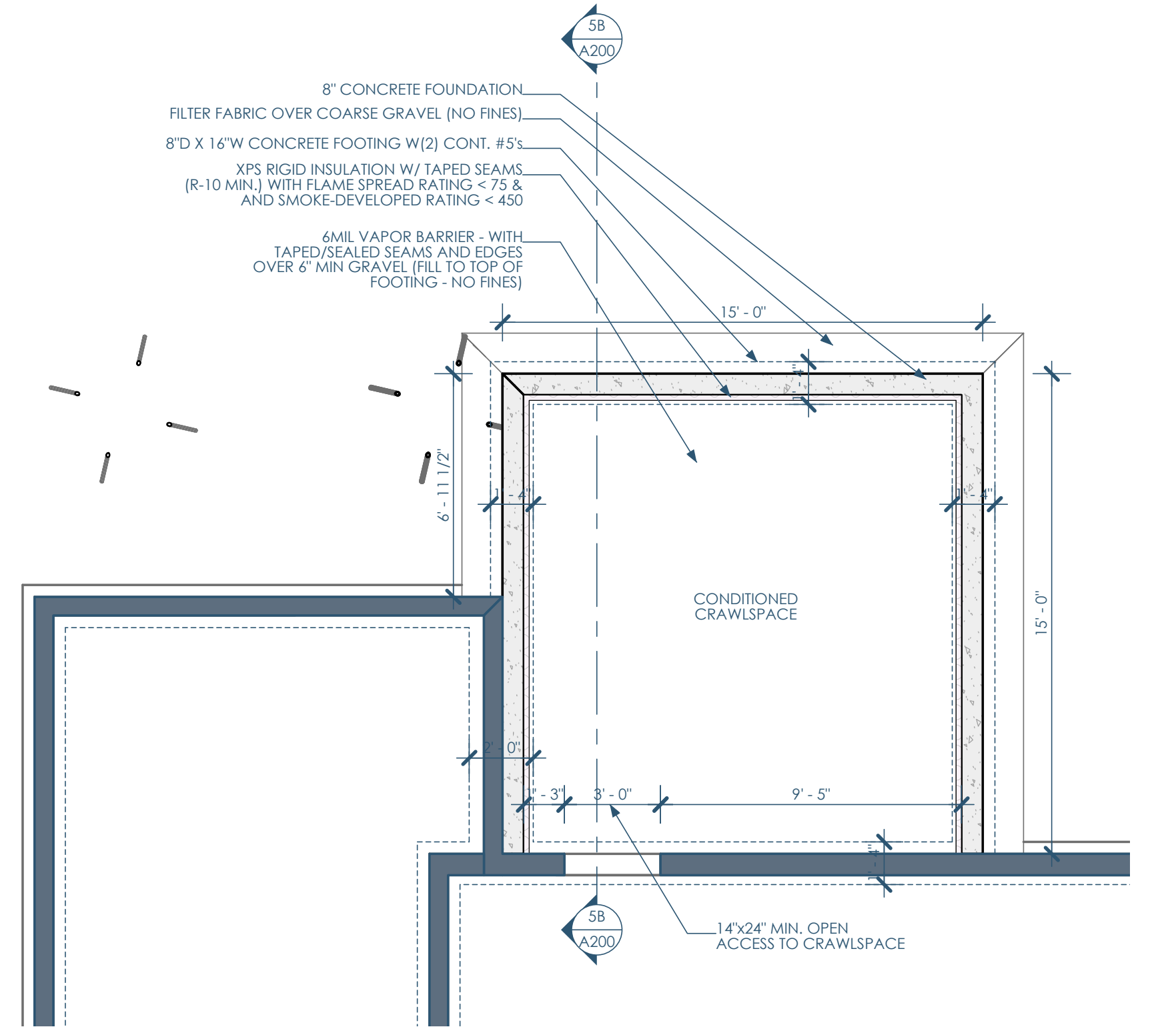
4A/A100 ROOF FRAMING RCP  
 1/4"=1'-0"



3B/A100 DEMO PLAN  
 3/32"=1'-0"



3A/A100 ROOF FRAMING RCP - DEMO  
 1/8"=1'-0"



2A/A100 BASEMENT PLAN  
 1/4"=1'-0"



Architect: OpeningDesign  
 17 S Fairchild | FL 7  
 Madison, WI 53703  
 ryan@openingdesign.com | 773.425.6456

GC: Exceptional Exteriors  
 441 Glacier Moraine Dr | Unit 10  
 Stoughton, WI, 52589  
 exceptionalexteriors608@gmail.com | 608.354.6887

This project, like most OpeningDesign's projects, is open source (Attribution-ShareAlike 4.0 International--CC-BY-SA 4.0)--freely available to any party for future use, assuming the terms such as Attribution and ShareAlike are honored.

5

4

3

2

1

C

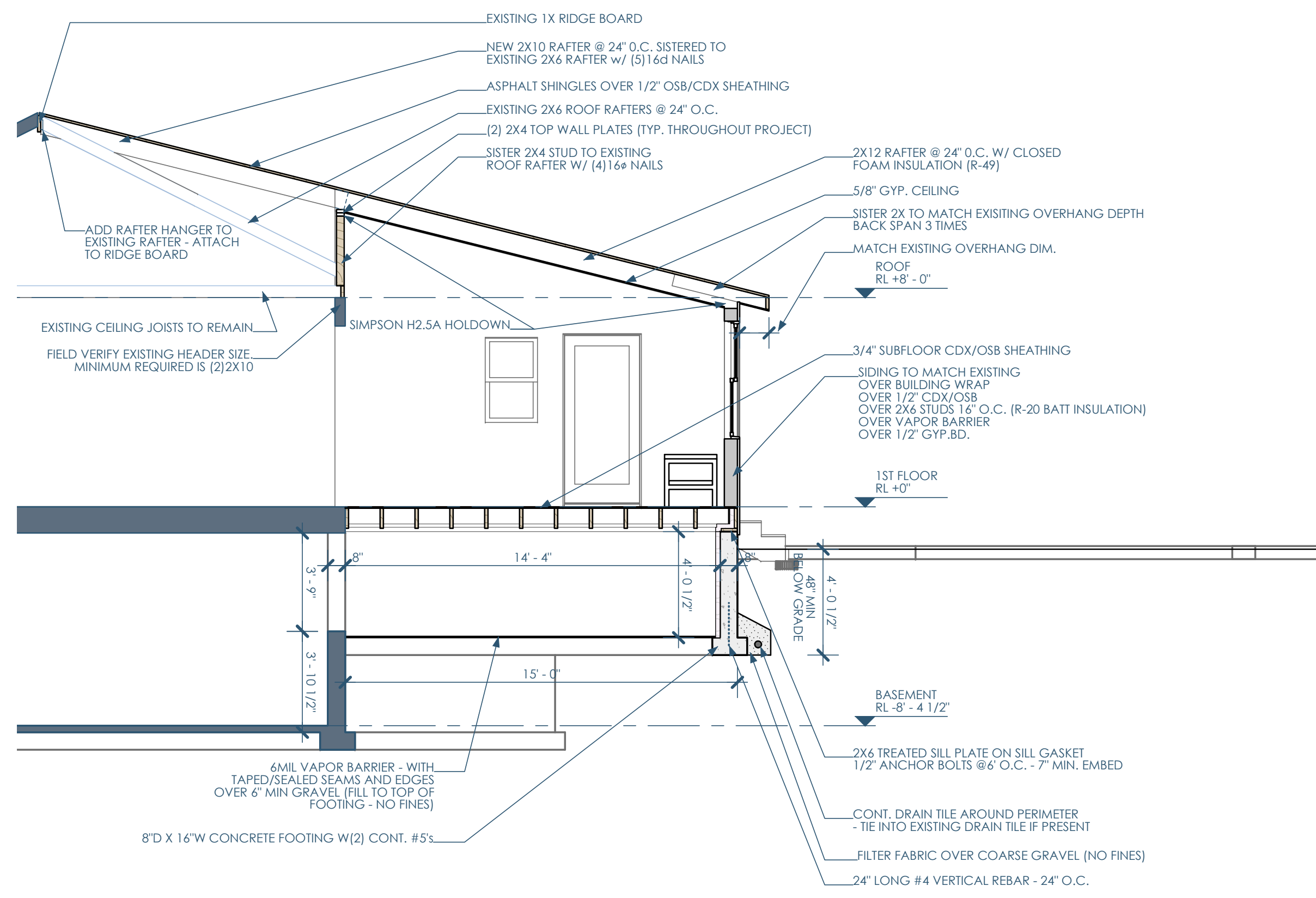
C

B

B

A

A



5B/A200 WEST SECTION  
 1/4"=1'-0"



Architect: Opening Design  
 17 S Fairchild | FL 7  
 Madison, WI 53703  
 ryan@openingdesign.com | 773.425.6456

GC: Exceptional Exteriors  
 441 Glacier Moraine Dr | Unit 10  
 Stoughton, WI, 52589  
 exceptionalexteriors608@gmail.com | 608.354.6887

BUILDING SECTION 04/05/2024  
 RESIDENTIAL EXTENSION  
 1316 LOFTSGORDON AVE, MADISON, WI, 53704

A200

5

4

3

2

1

This project, like most Opening Design's projects, is open source (Attribution-ShareAlike 4.0 International=CC-BY-SA 4.0)=freely available to any party for future use, assuming the terms such as Attribution and ShareAlike are honored.