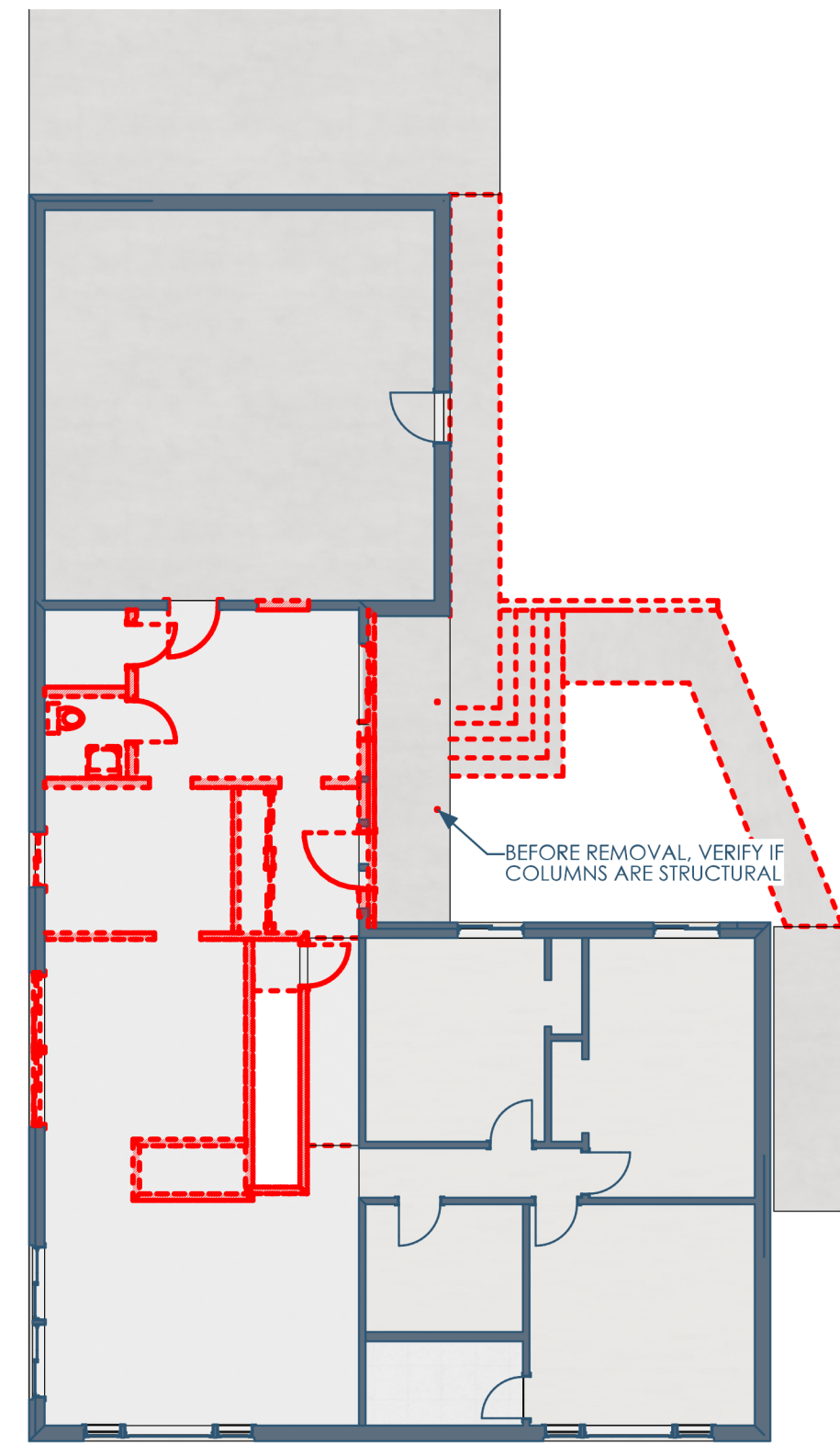
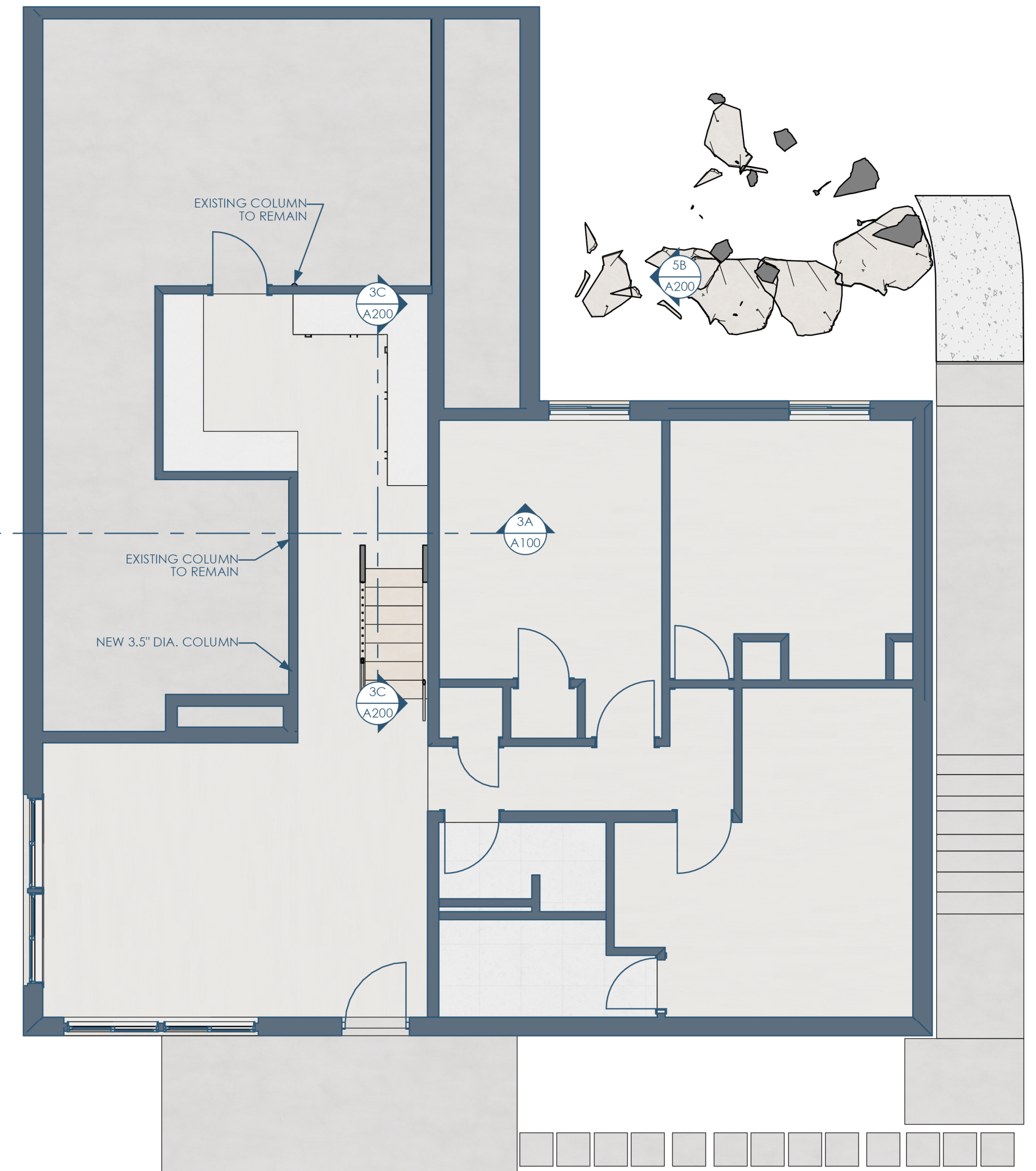


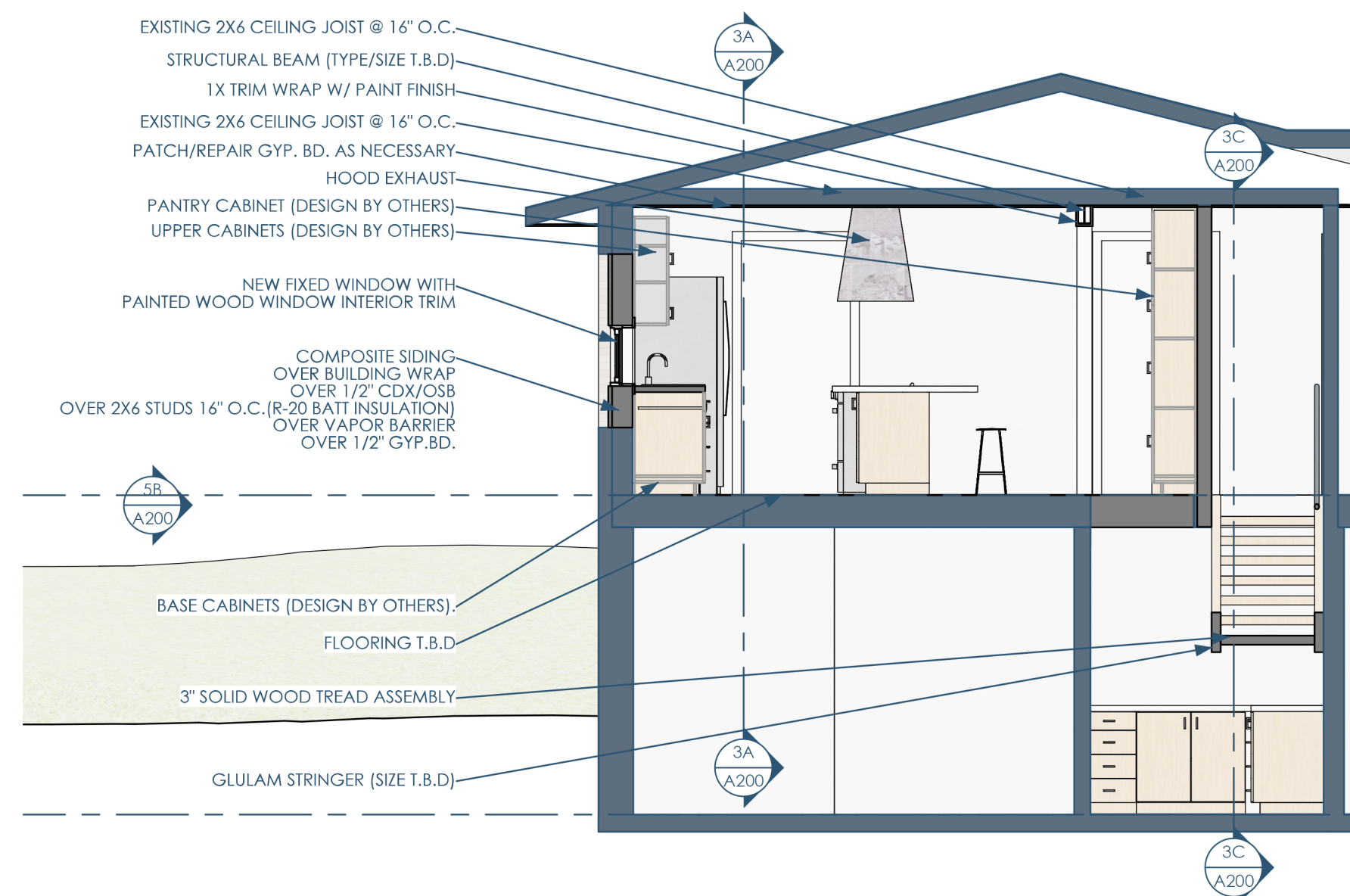
5A/A100 FLOOR PLAN - 1ST FLOOR
3/16"=1'-0"



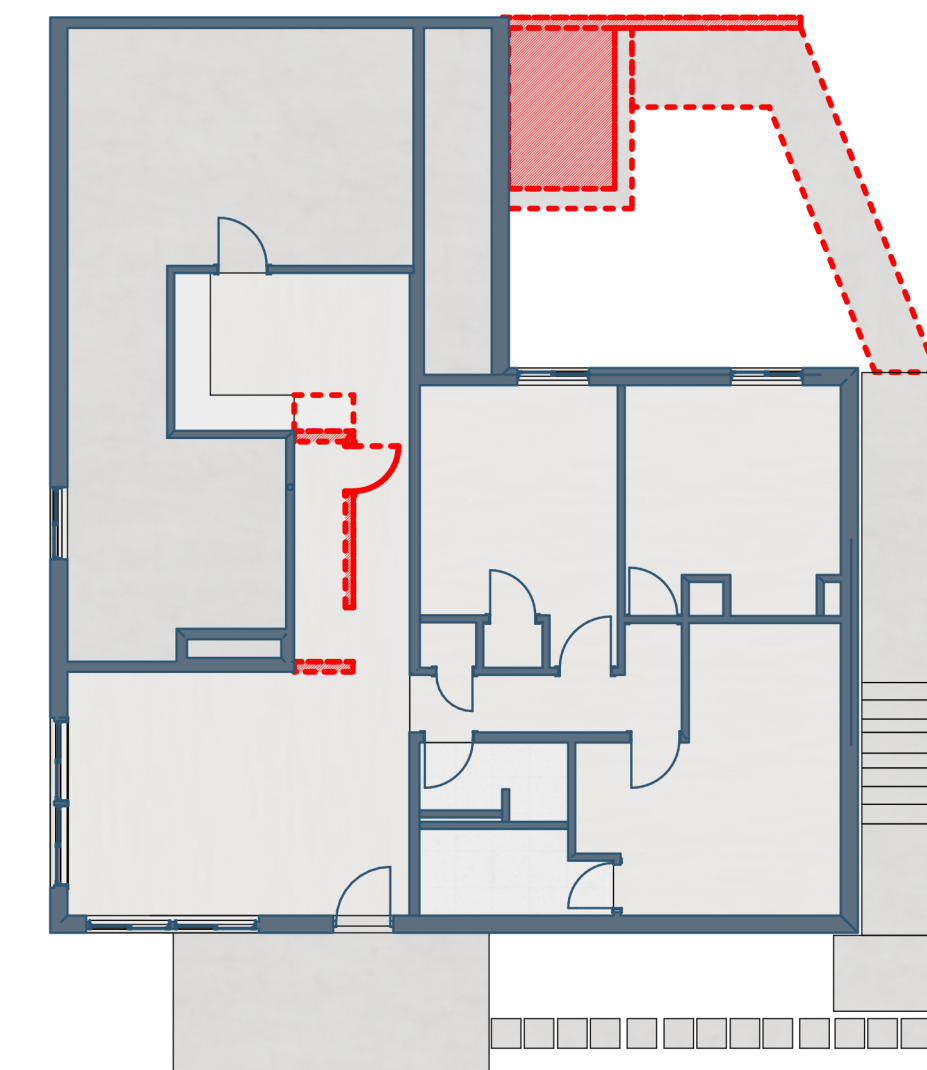
3B/A100 DEMO PLAN - 1ST FLOOR
3/32"=1'-0"



2B/A100 FLOOR PLAN - BASEMENT
3/16"=1'-0"



3A/A100 SECTION - SOUTH AT KITCHEN
1/4"=1'-0"



2A/A100 DEMO PLAN - BASEMENT
3/32"=1'-0"



5

4

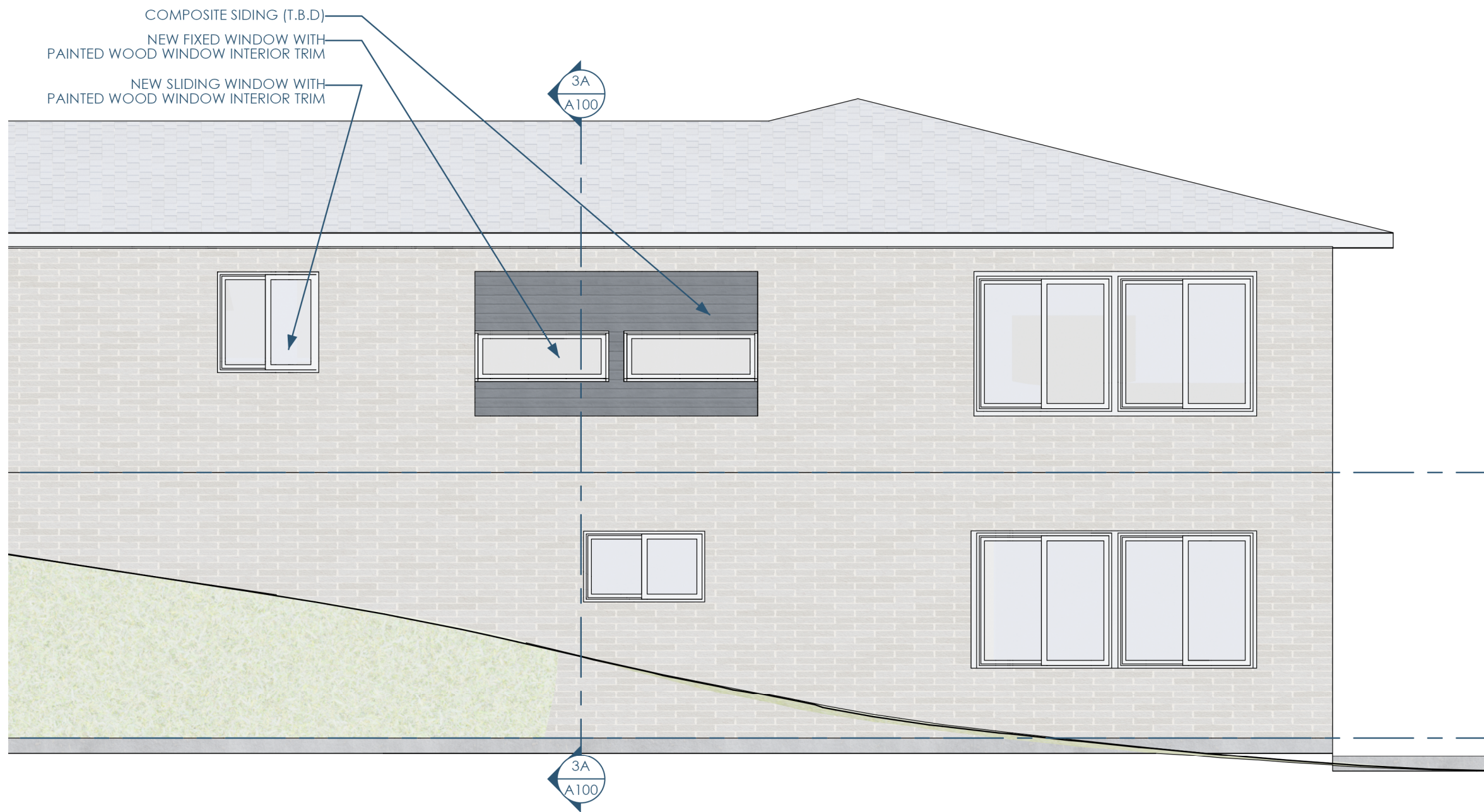
3

2

1

C

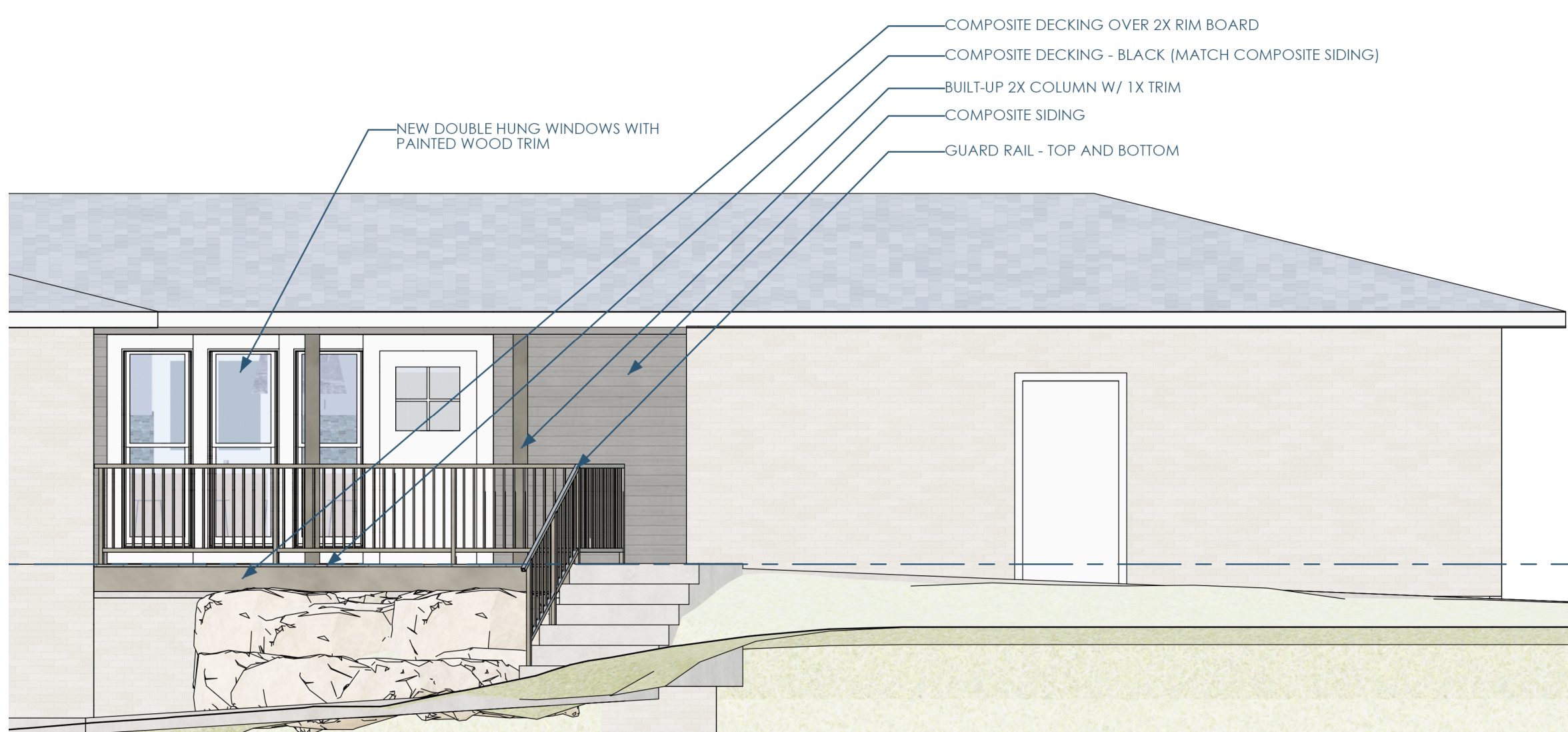
C



5B/A200 ELEVATION - EAST
1/4"=1'-0"

B

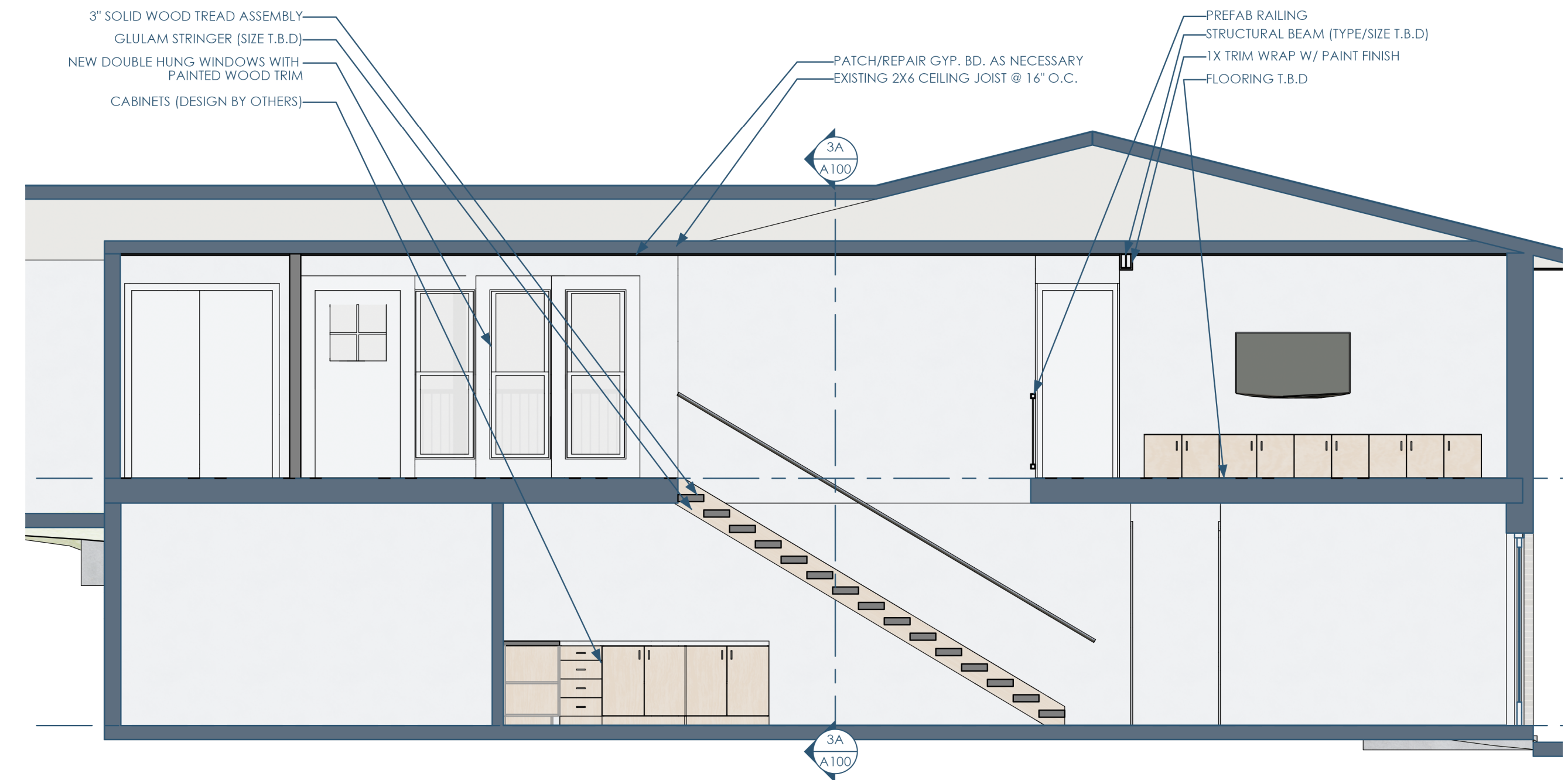
B



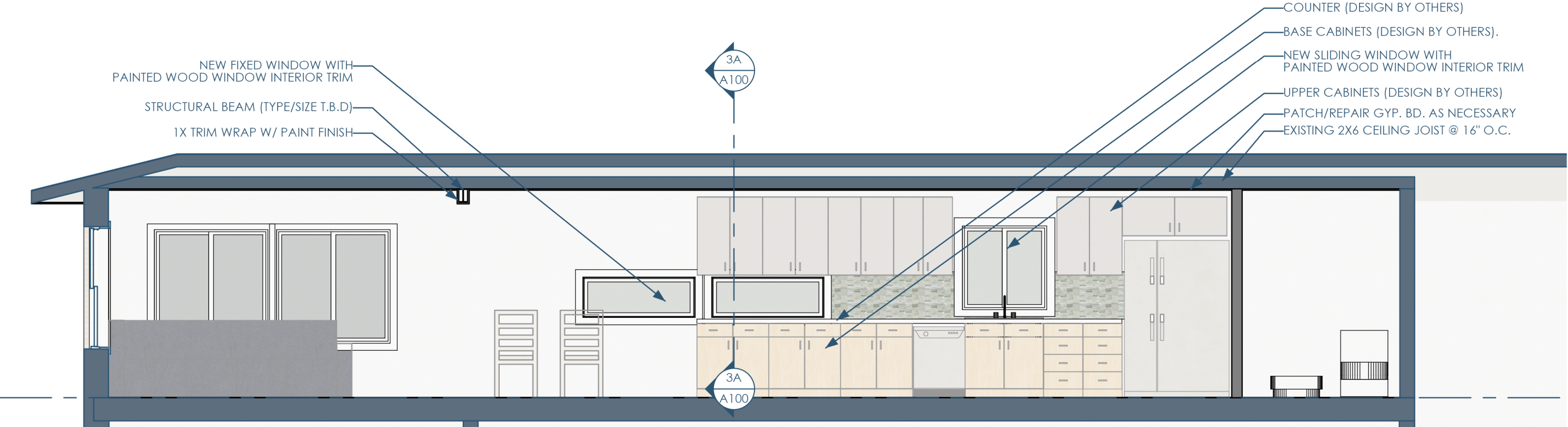
5B/A200 ELEVATION - WEST AT FRONT PORCH
1/4"=1'-0"

A

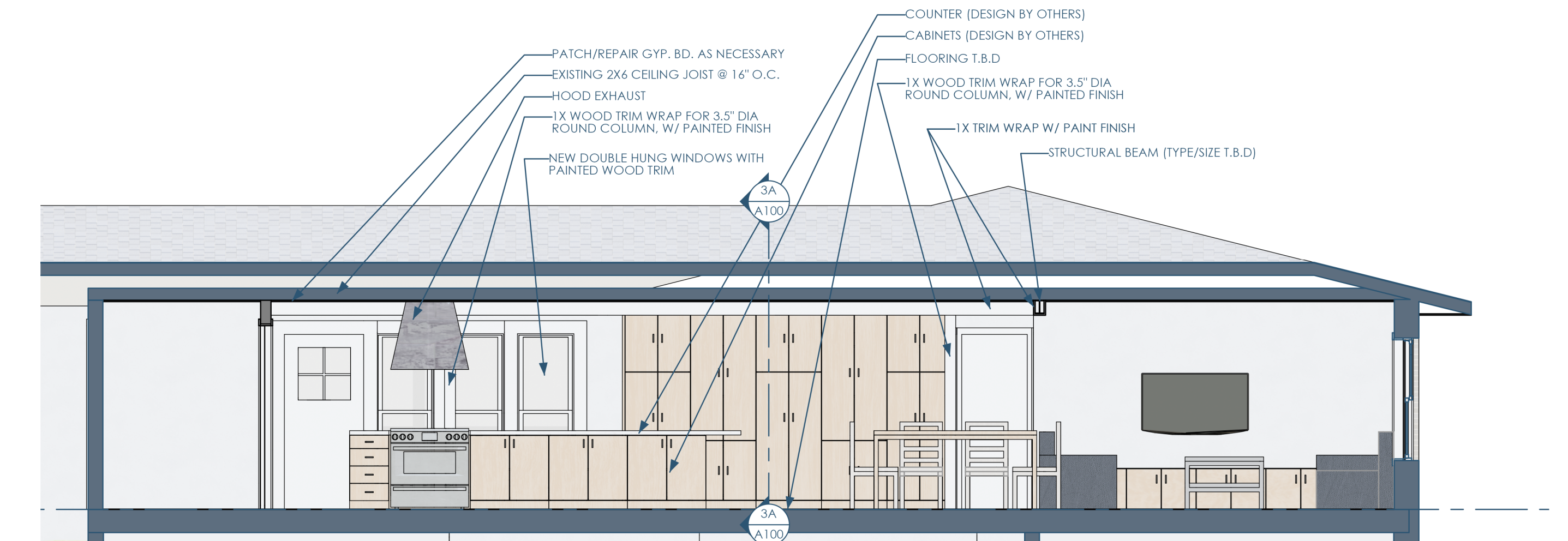
A



3C/A200 SECTION - EAST AT STAIR
1/4"=1'-0"



3B/A200 SECTION - WEST AT KITCHEN
1/4"=1'-0"



3A/A200 SECTION - EAST LOOKING AT TALL CABINETS
1/4"=1'-0"



Architect: OpeningDesign
 17 S Fairchild | FL 7
 Madison, WI 53703
 ryan@openingdesign.com | 773.425.6456

SECTIONS & ELEVATIONS
 LAKE KEGONSA RESIDENCE

A200

5

4

3

2

1

This project, like most OpeningDesign's projects, is open source (Attribution-ShareAlike 4.0 International-CC BY-SA 4.0)-freely available to any party for future use, assuming the terms such as Attribution and ShareAlike are honored.

5

4

3

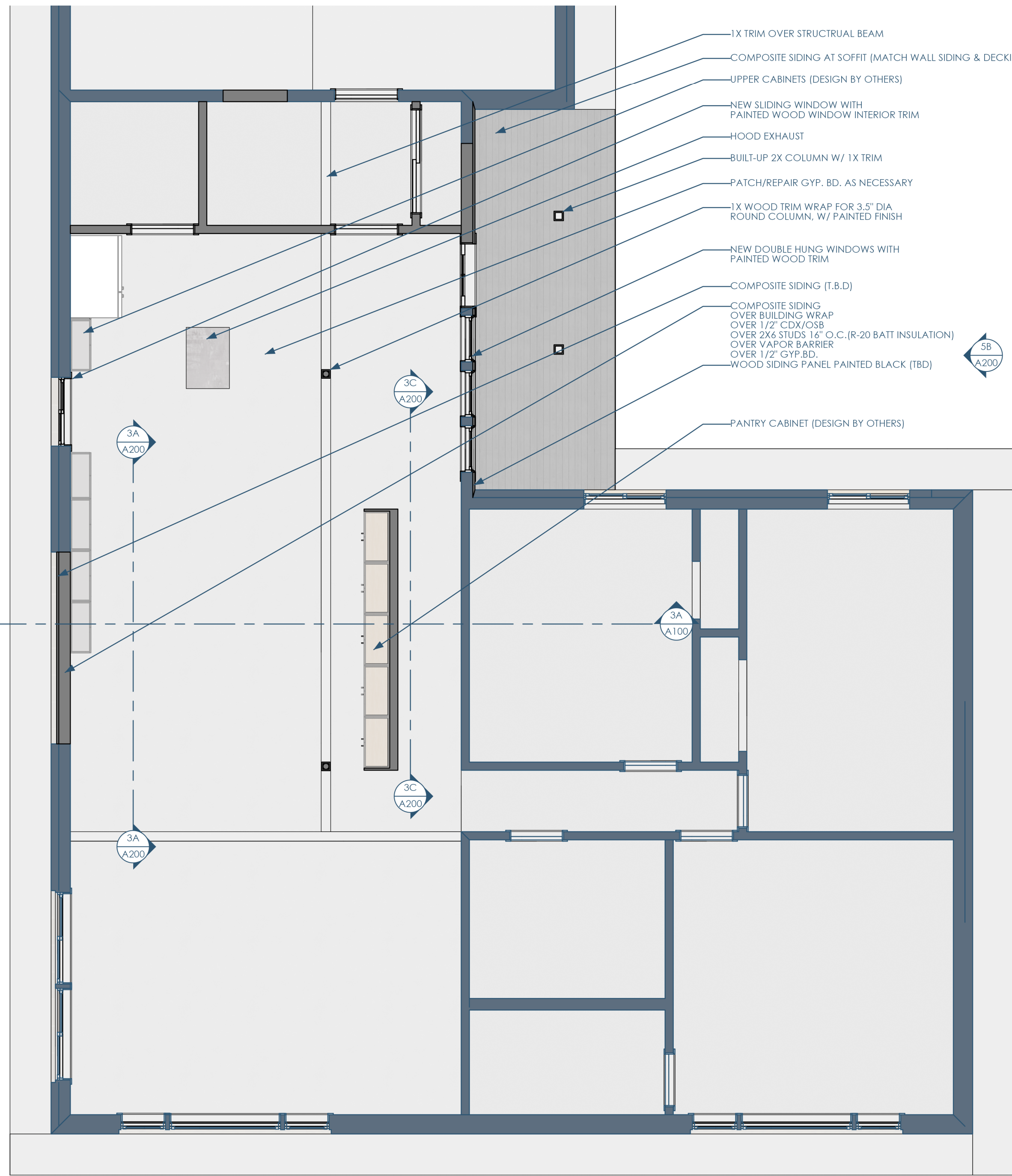
2

1

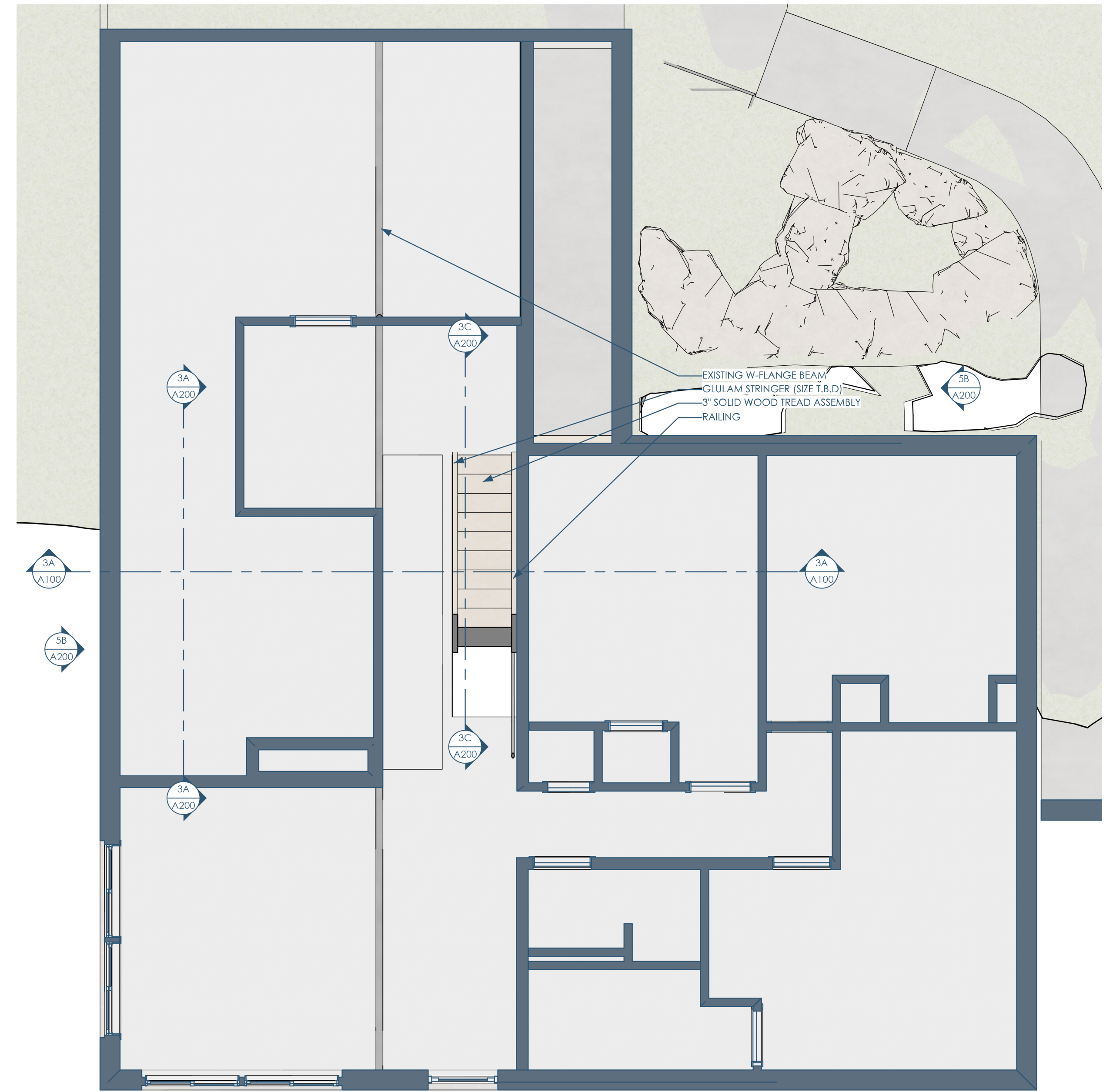
C

B

A



5A/A300 RCP - 1ST FLOOR
1/4"=1'-0"



3A/A300 RCP - BASEMENT
1/4"=1'-0"



openingdesign
Architect: OpeningDesign
17 S Fairchild | FL 7
Madison, WI 53703
ryan@openingdesign.com | 773.425.6456

RCP PLANS
LAKE KEGONSA RESIDENCE

A300

This project, like most OpeningDesign's projects, is open source (Attribution-ShareAlike 4.0 International=CC-BY-SA 4.0) - freely available to any party for future use, assuming the terms such as Attribution and ShareAlike are honored.



5B/A400 INTERIOR - LIVING ROOM 2



4B/A400 INTERIOR - LIVING ROOM 1



1A/A400 ENTRY WAY - 2



5A/A400 ENTRY WAY - 1



3A/A400 INTERIOR - ENTRY



2B/A400 INTERIOR - BASEMENT

