

5

4

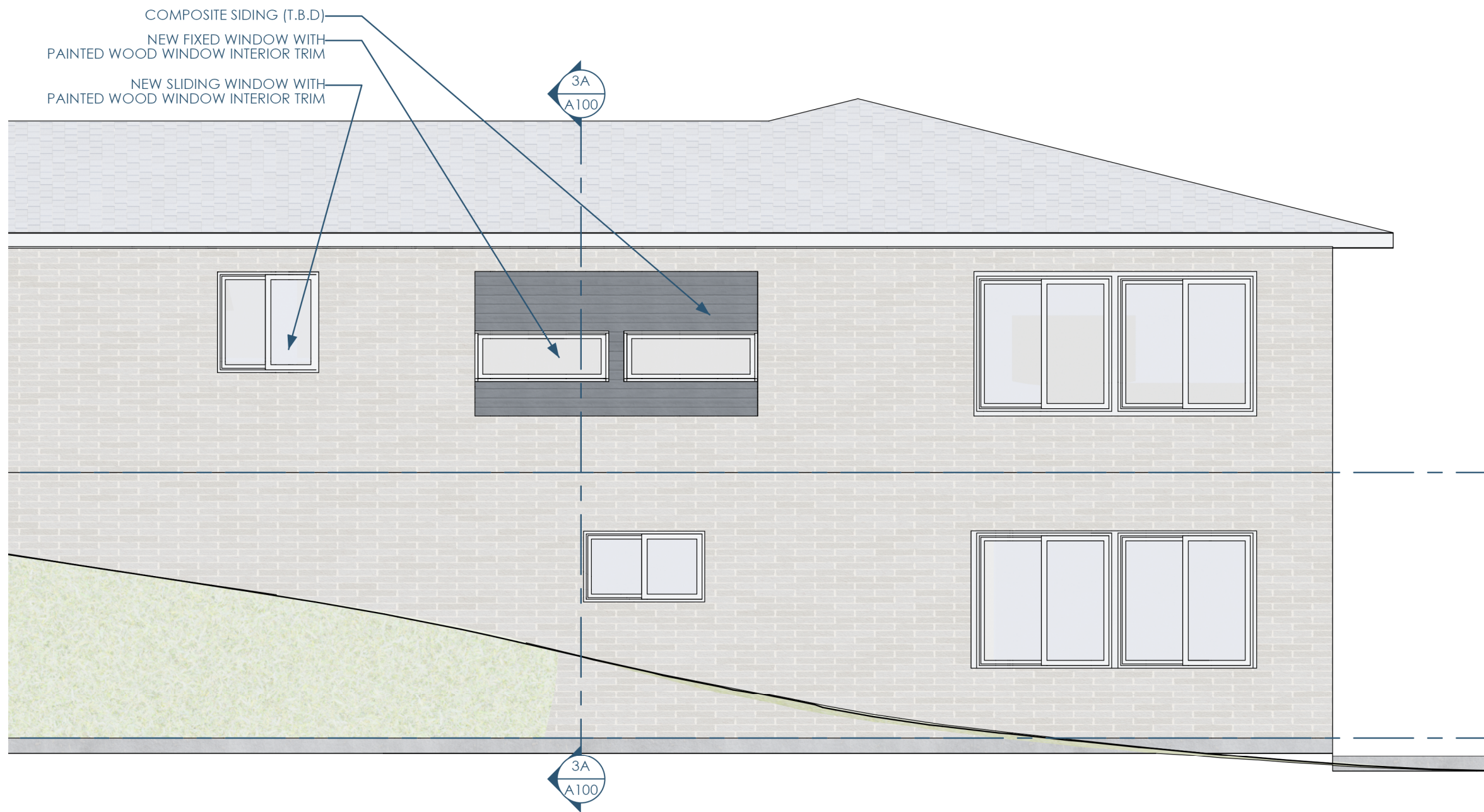
3

2

1

C

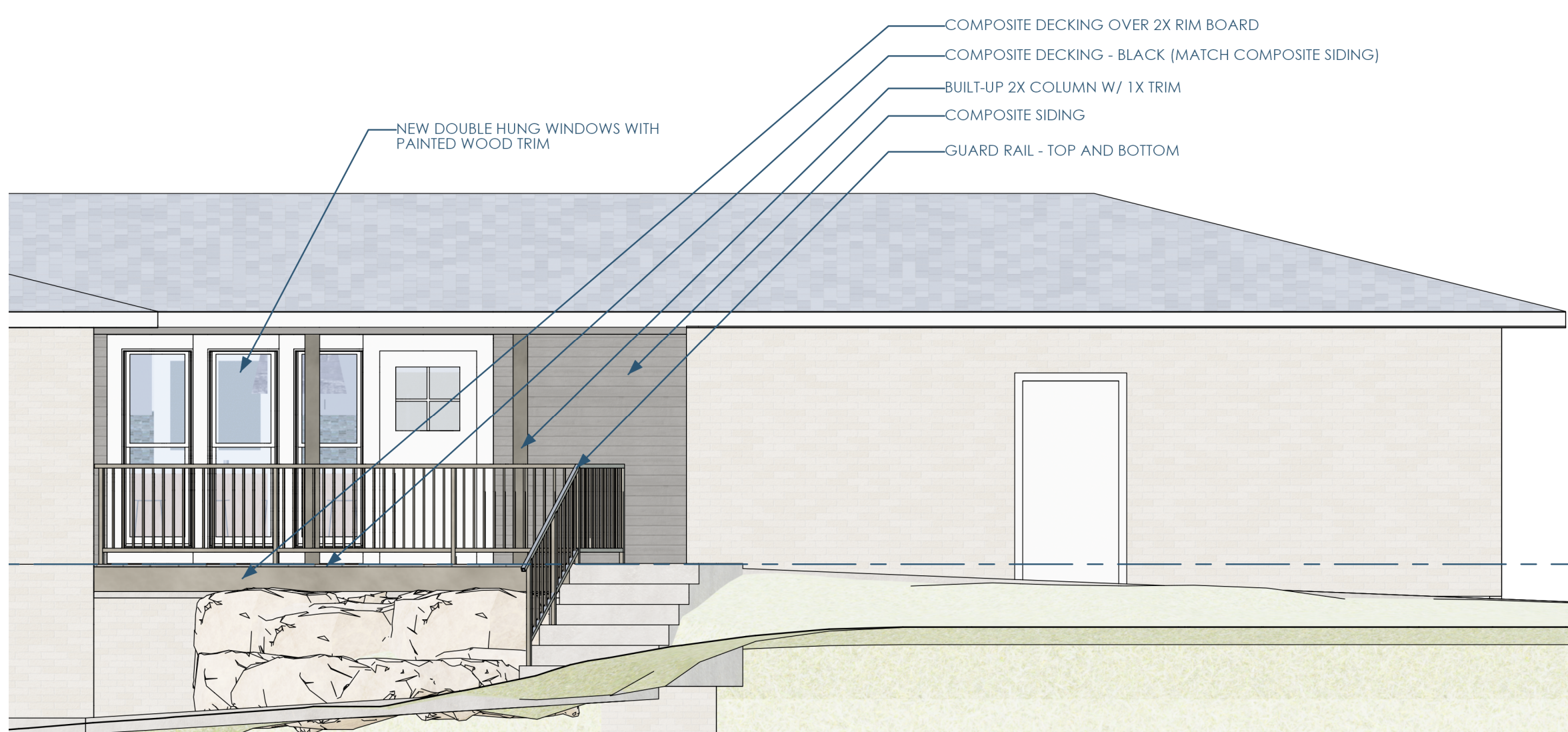
C



5B/A200 ELEVATION - EAST  
1/4"=1'-0"

B

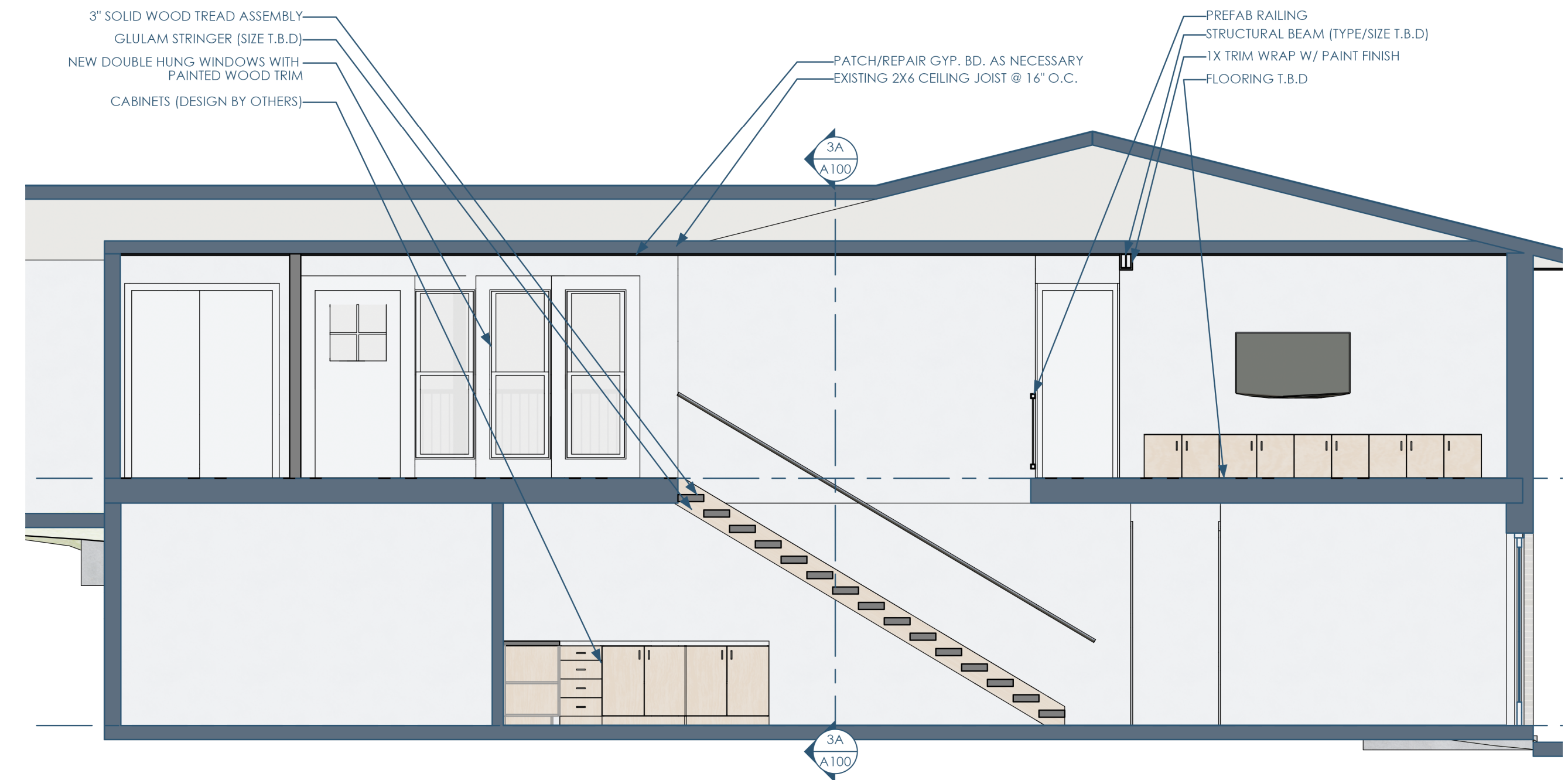
B



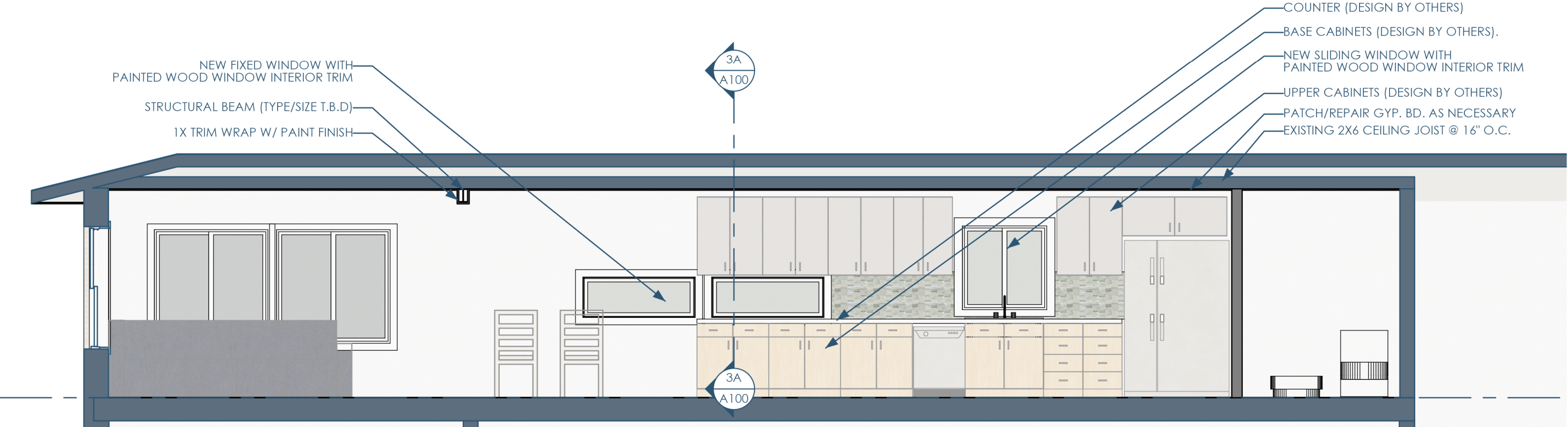
5B/A200 ELEVATION - WEST AT FRONT PORCH  
1/4"=1'-0"

A

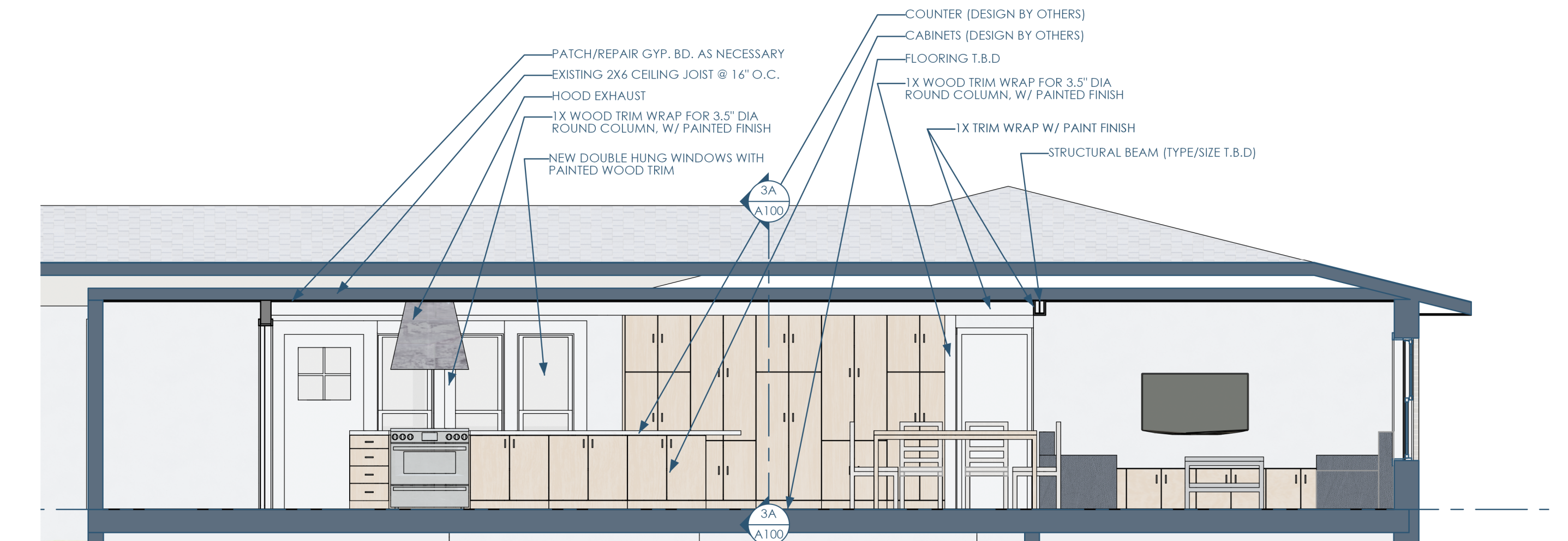
A



3C/A200 SECTION - EAST AT STAIR  
1/4"=1'-0"



3B/A200 SECTION - WEST AT KITCHEN  
1/4"=1'-0"



3A/A200 SECTION - EAST LOOKING AT TALL CABINETS  
1/4"=1'-0"



Architect: OpeningDesign  
 17 S Fairchild | FL 7  
 Madison, WI 53703  
 ryan@openingdesign.com | 773.425.6456

SECTIONS & ELEVATIONS  
 LAKE KEGONSA RESIDENCE

A200

5

4

3

2

1

This project, like most OpeningDesign's projects, is open source (Attribution-ShareAlike 4.0 International-CC BY-SA 4.0)-freely available to any party for future use, assuming the terms such as Attribution and ShareAlike are honored.