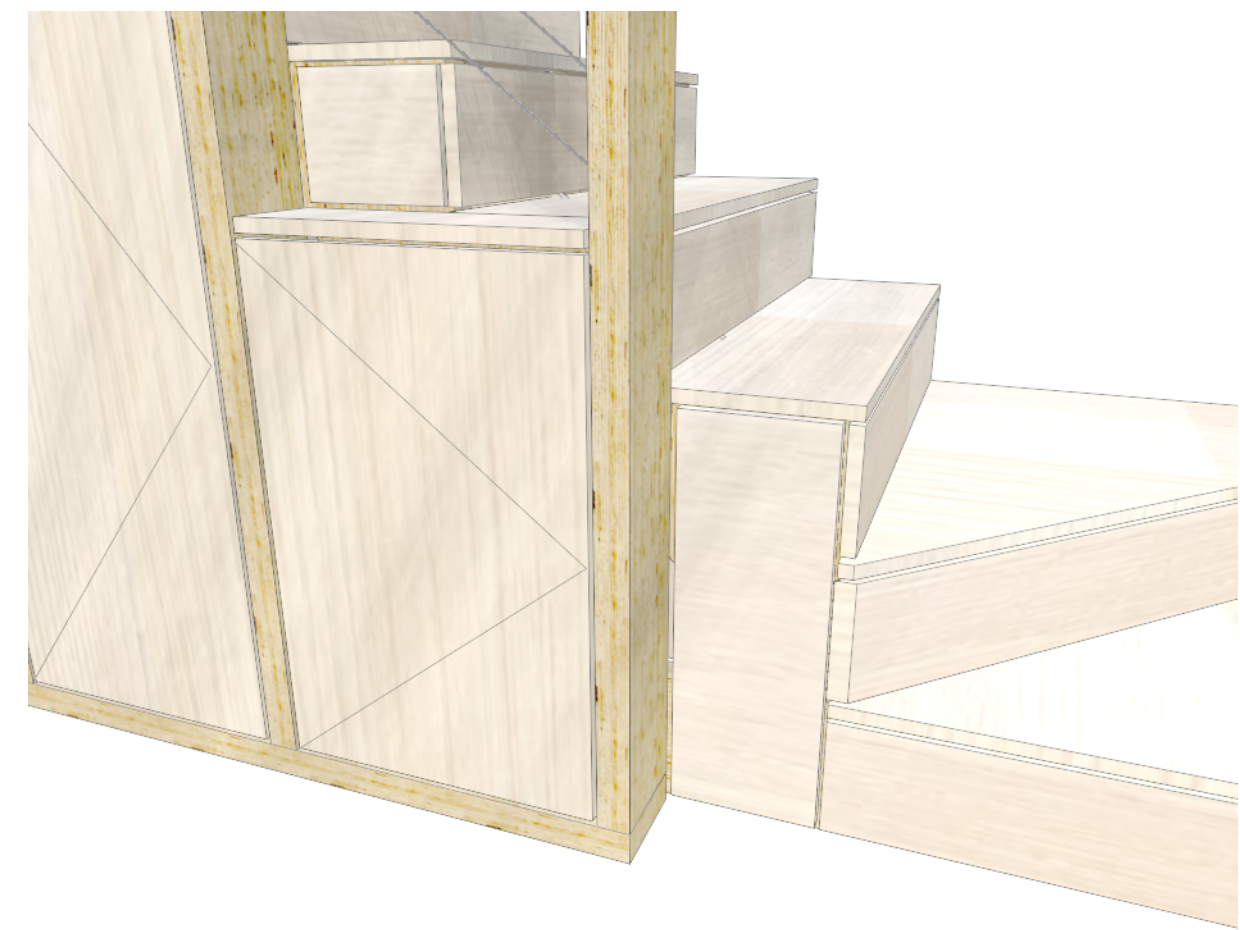


5C/A400 STAIR - PERSPECTIVE 1
1/16"=1'-0"

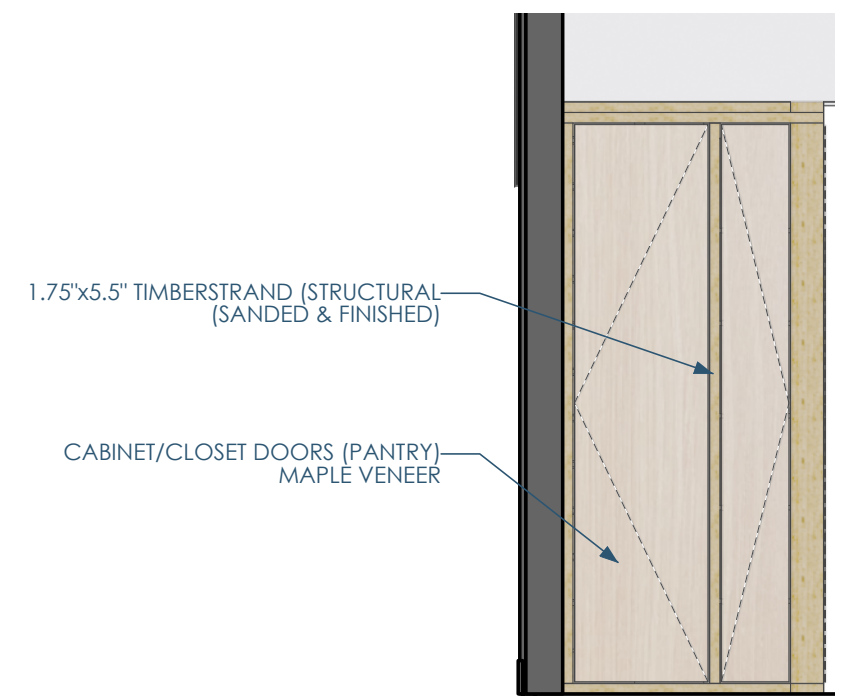
4C/A400 STAIR - PERSPECTIVE 2
1/16"=1'-0"

3C/A400 STAIR - PERSPECTIVE 3
1/16"=1'-0"

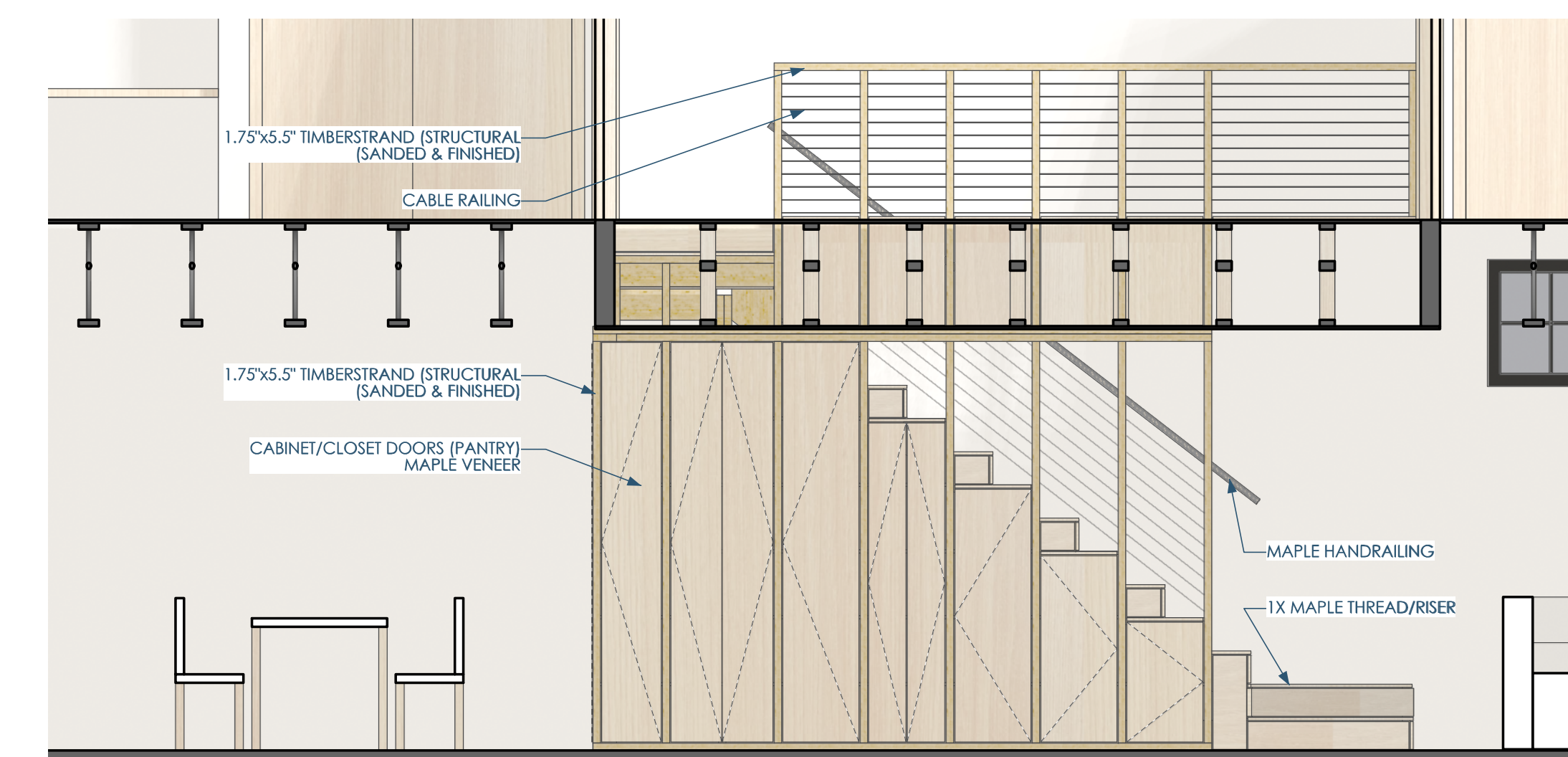
2C/A400 STAIR - PERSPECTIVE 4
1/16"=1'-0"



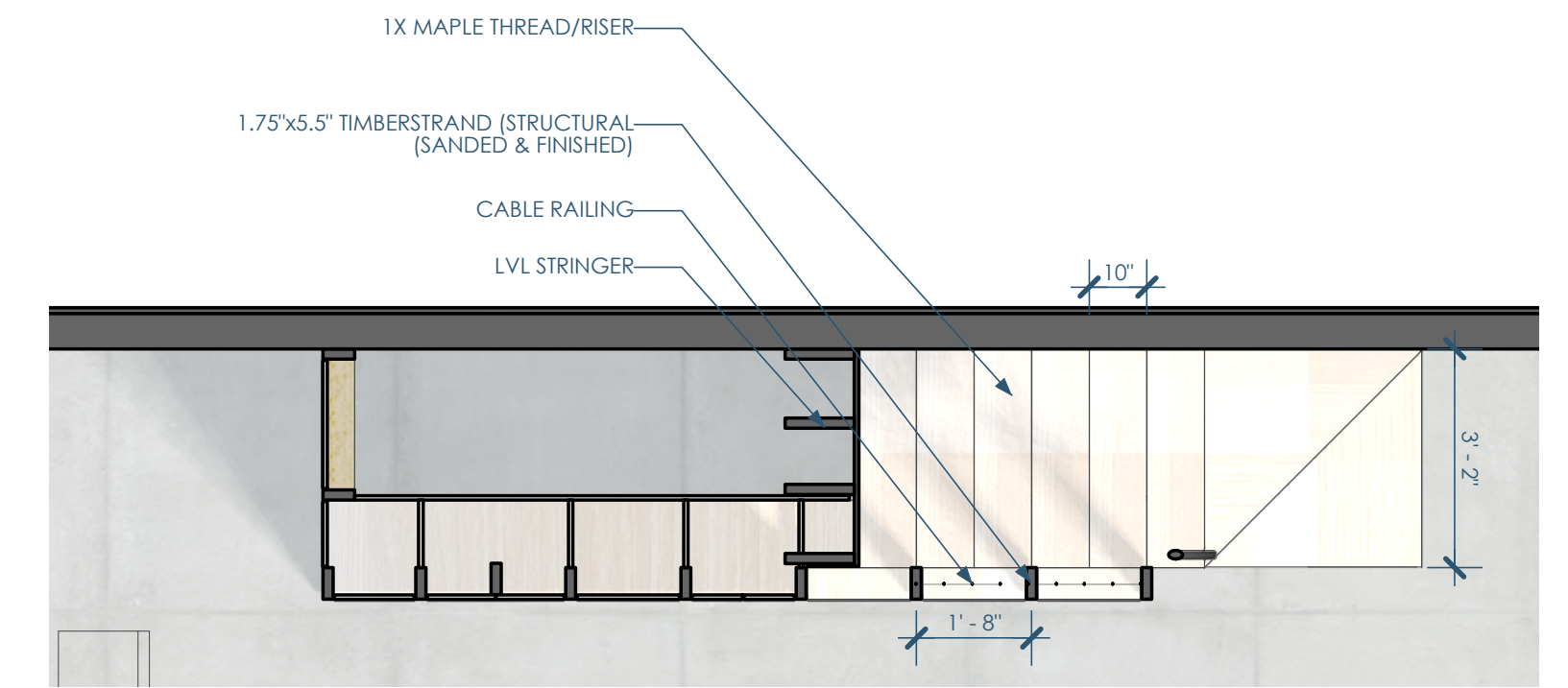
5B/A400 STAIR - PERSPECTIVE 5 - detail
1"=20"



3B/A400 STAIR - ELEVATION - END
3/8"=1'-0"



2B/A400 STAIR - ELEVATION - FRONT
3/8"=1'-0"



2A/A400 STAIR - ENLARGED PLAN
3/8"=1'-0"



Architect: OpeningDesign
17 S Fairchild | FL 7
Madison, WI 53703
ryan@openingdesign.com | 773.425.6456

GC: J W Schultz Construction
N2941 Bander Rd
Fort Atkinson, WI 53589
jason@jwschultz.net | 608.295.6891

ENLARGED PLANS - STAIRS_06/20/2024
HIGHLAND HAVEN
N1807 S MAIN ST, FORT ATKINSON, WI

A400

This project, like most OpeningDesign's projects, is open source (Attribution-ShareAlike 4.0 International-CC BY-SA 4.0)-freely available to any party for future use, assuming the terms such as Attribution and ShareAlike are honored.