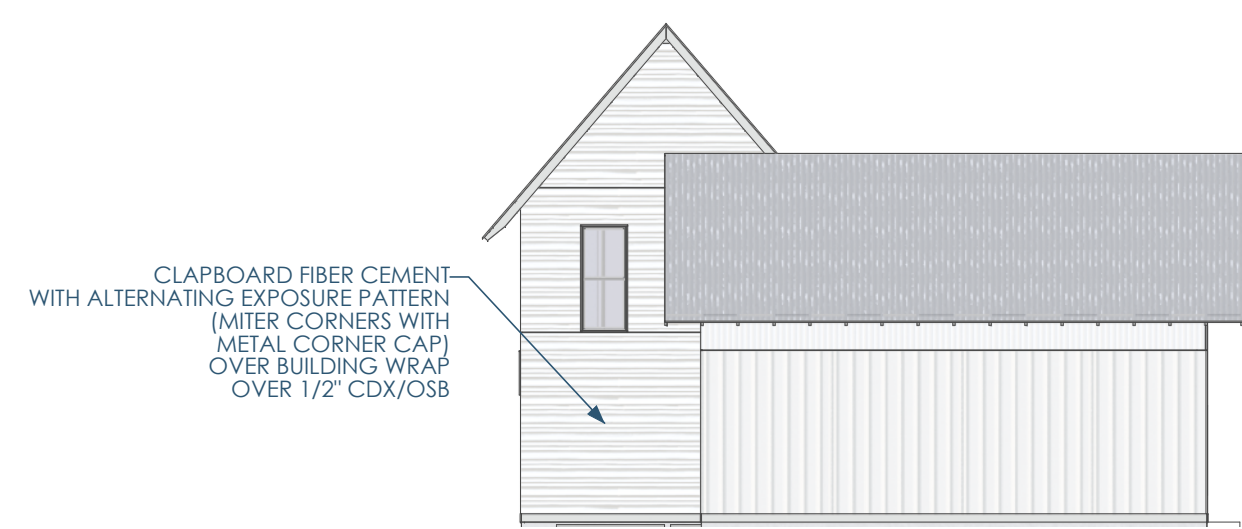
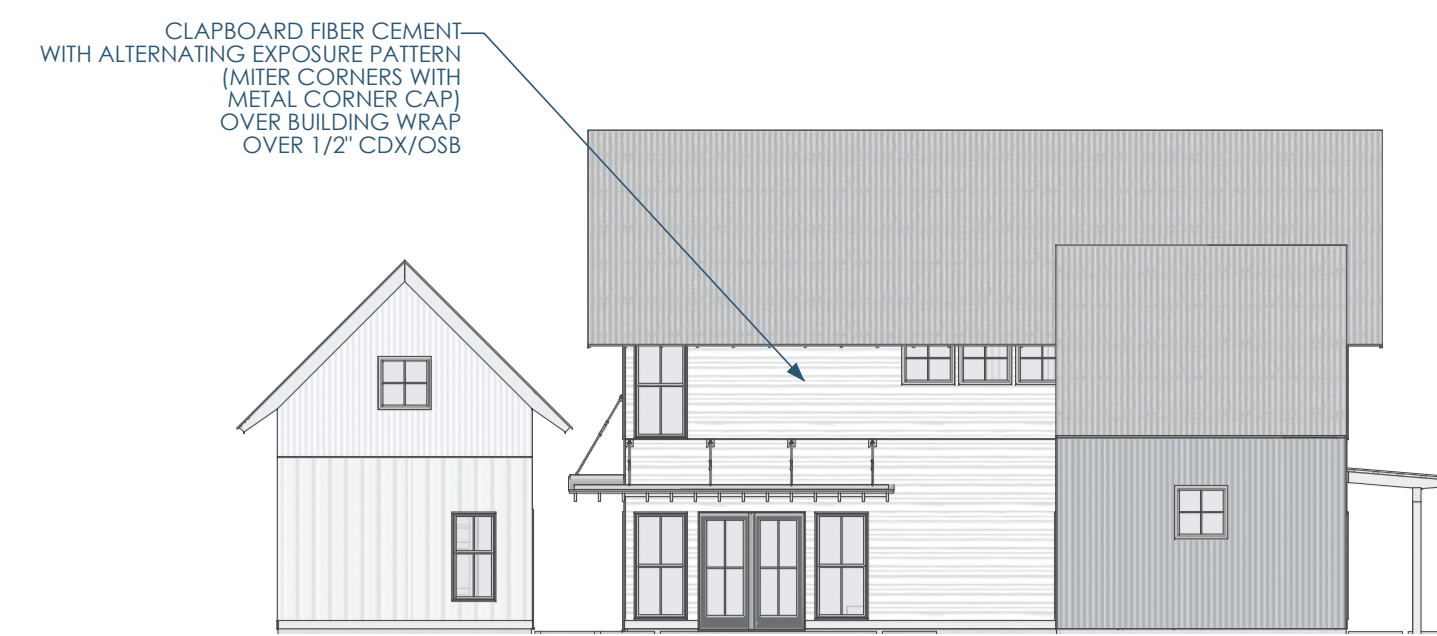


5C/A250 RR - ELEVATION - EAST  
3/32"=1'-0"



4C/A250 RR - ELEVATION - NORTH  
3/32"=1'-0"



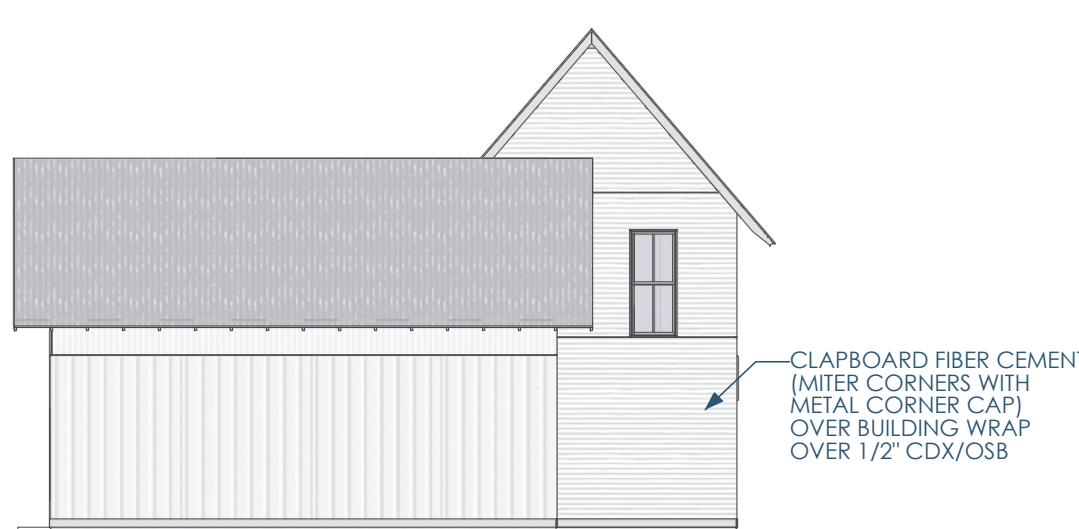
3C/A250 RR - ELEVATION - WEST  
3/32"=1'-0"



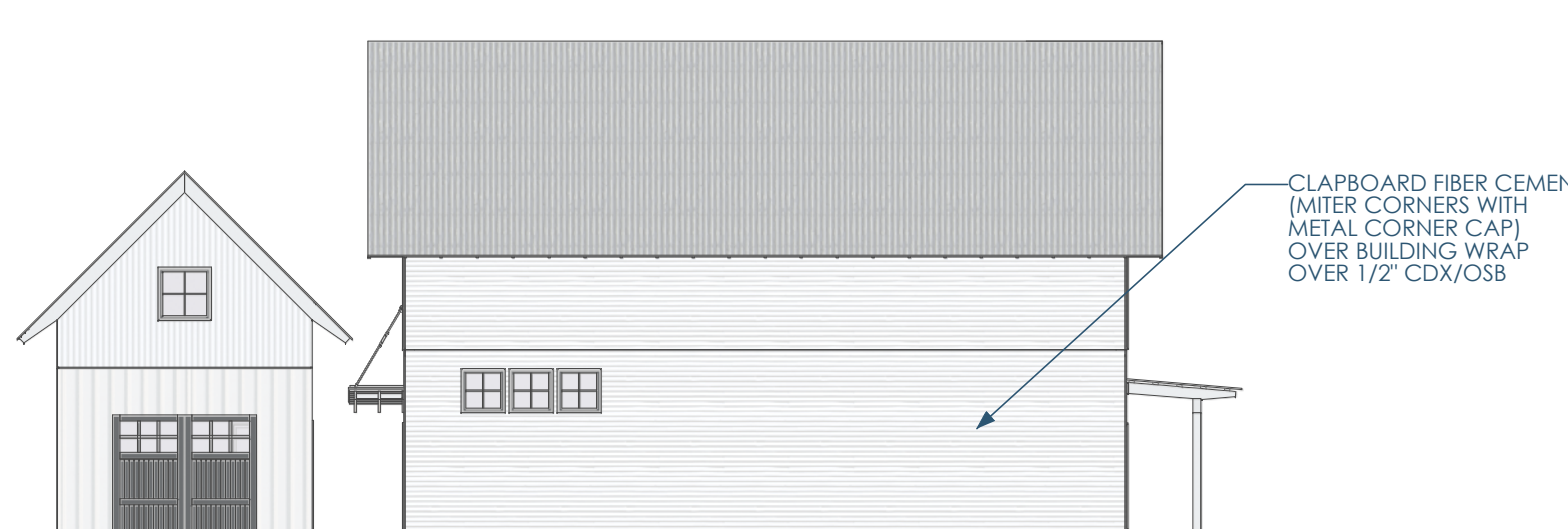
2C/A250 RR - ELEVATION - SOUTH  
3/32"=1'-0"



5B/A250 LL - ELEVATION - EAST  
3/32"=1'-0"



4B/A250 LL - ELEVATION - NORTH  
3/32"=1'-0"



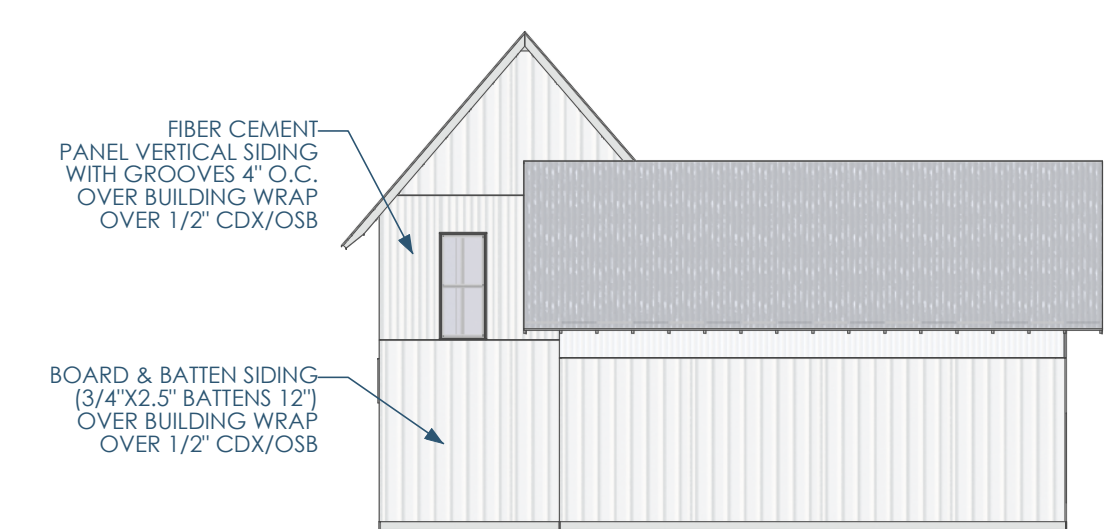
3B/A250 LL - ELEVATION - WEST  
3/32"=1'-0"



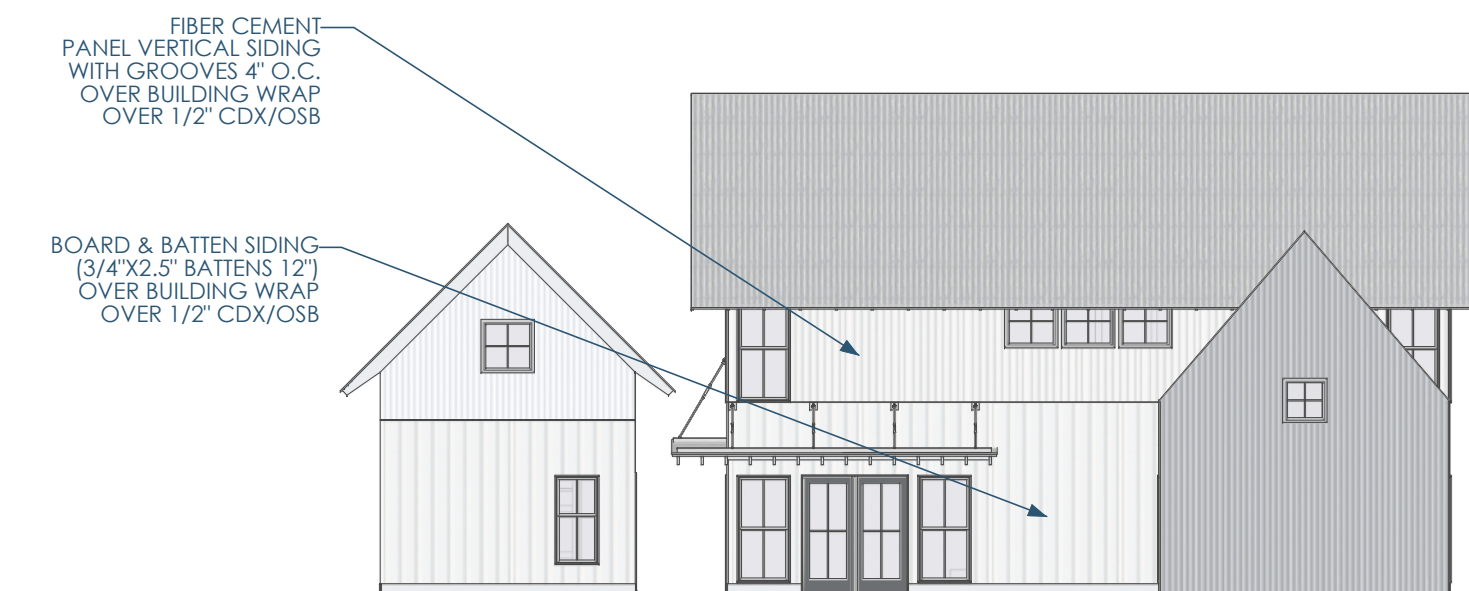
2B/A250 LL - ELEVATION - SOUTH  
3/32"=1'-0"



5A/A250 R - ELEVATION - EAST  
3/32"=1'-0"



4A/A250 R - ELEVATION - NORTH  
3/32"=1'-0"



3A/A250 R - ELEVATION - WEST  
3/32"=1'-0"



2A/A250 R - ELEVATION - SOUTH  
3/32"=1'-0"

SEE SHEETS A200-A203 FOR 'L ELEVATIONS'  
AND SEE SHEET A250 FOR OVERALL SITE ELEVATIONS



Architect: OpeningDesign  
17 S Fairchild | FL 7  
Madison, WI 53703  
ryan@openingdesign.com | 773.425.6456



GC: J W Schultz Construction  
N2941 Bander Rd  
Fort Atkinson, WI 53589  
jason@jwschultz.net | 608.295.6891

OTHER ELEVATIONS 04/02/2024

HIGHLAND HAVEN  
N1777 FRIEDEL RD - FORT ATKINSON, WI 53589

A250

This project, like most OpeningDesign's projects, is open source (Attribution-ShareAlike 4.0 International-CC BY-SA 4.0)-freely available to any party for future use, assuming the terms such as Attribution and ShareAlike are honored.