

OCCUPANCY	NUMBER	NAME	AREA	FLOORING	WALLS	CEILING	WALL BASE	COMMENTS
RESIDENCE	100	PRIMARY BEDROOM	166	CARPET (RADIANT HEAT IN SLAB)	PAINTED GYP. BD. (5/8" AT EXT. WALLS & CEILINGS) - 1/2" AT INTERIOR WALLS	SEE REFLECTED CEILING PLAN	1X3 PINE	-
RESIDENCE	101	WALK-IN CLOSET	45	CARPET (RADIANT HEAT IN SLAB)	PAINTED GYP. BD. (5/8" AT EXT. WALLS & CEILINGS) - 1/2" AT INTERIOR WALLS	SEE REFLECTED CEILING PLAN	1X3 PINE	-
RESIDENCE	102	BATHROOM - 1ST	51	LVT - 1 (RADIANT HEAT IN SLAB)	TILE - 1 AT SHOWER/TOILET - PAINTED GYP. BD. (5/8" AT EXT. WALLS & CEILINGS) - 1/2" AT INTERIOR WALLS	SEE REFLECTED CEILING PLAN	1X3 PINE	-
RESIDENCE	103	CLOS.	12	STAINED AND SEALED CONCRETE (RADIANT HEAT IN SLAB)	PAINTED GYP. BD. (5/8" AT EXT. WALLS & CEILINGS) - 1/2" AT INTERIOR WALLS	SEE REFLECTED CEILING PLAN	1X3 PINE	-
RESIDENCE	104	ENTRY	50	STAINED AND SEALED CONCRETE (RADIANT HEAT IN SLAB)	PAINTED GYP. BD. (5/8" AT EXT. WALLS & CEILINGS) - 1/2" AT INTERIOR WALLS	SEE REFLECTED CEILING PLAN	1X3 PINE	-
RESIDENCE	105	DINING	169	STAINED AND SEALED CONCRETE (RADIANT HEAT IN SLAB)	PAINTED GYP. BD. (5/8" AT EXT. WALLS & CEILINGS) - 1/2" AT INTERIOR WALLS	SEE REFLECTED CEILING PLAN	1X3 PINE	-
RESIDENCE	106	KITCHEN	188	STAINED AND SEALED CONCRETE (RADIANT HEAT IN SLAB)	TILE - 2 AT BACK SPLASH - PAINTED GYP. BD. (5/8" AT EXT. WALLS & CEILINGS) - 1/2" AT INTERIOR WALLS	SEE REFLECTED CEILING PLAN	1X3 PINE	-
RESIDENCE	107	PANTRY	32	STAINED AND SEALED CONCRETE (RADIANT HEAT IN SLAB)	PAINTED GYP. BD. (5/8" AT EXT. WALLS & CEILINGS) - 1/2" AT INTERIOR WALLS	SEE REFLECTED CEILING PLAN	1X3 PINE	-
RESIDENCE	108	LIVING ROOM	177	STAINED AND SEALED CONCRETE (RADIANT HEAT IN SLAB)	PAINTED GYP. BD. (5/8" AT EXT. WALLS & CEILINGS) - 1/2" AT INTERIOR WALLS	SEE REFLECTED CEILING PLAN	1X3 PINE	-
RESIDENCE	200	BEDROOM 1	152	CARPET OVER 3/4" ACOUSTICAL MAT	PAINTED GYP. BD. (5/8" AT EXT. WALLS & CEILINGS) - 1/2" AT INTERIOR WALLS	SEE REFLECTED CEILING PLAN	1X3 PINE	-
RESIDENCE	201	CLOS.	14	CARPET OVER 3/4" ACOUSTICAL MAT	PAINTED GYP. BD. (5/8" AT EXT. WALLS & CEILINGS) - 1/2" AT INTERIOR WALLS	SEE REFLECTED CEILING PLAN	1X3 PINE	-
RESIDENCE	202	BATHROOM	106	LVT - 2	PAINTED GYP. BD. (5/8" AT EXT. WALLS & CEILINGS) - 1/2" AT INTERIOR WALLS	SEE REFLECTED CEILING PLAN	1X3 PINE	-
RESIDENCE	203	HALLWAY	56	LVT - 3	PAINTED GYP. BD. (5/8" AT EXT. WALLS & CEILINGS) - 1/2" AT INTERIOR WALLS	SEE REFLECTED CEILING PLAN	1X3 PINE	-
RESIDENCE	204	STAIR	57	1X MAPLE TREADS AND RISERS	PAINTED GYP. BD. (5/8" AT EXT. WALLS & CEILINGS) - 1/2" AT INTERIOR WALLS	SEE REFLECTED CEILING PLAN	1X3 PINE	-
RESIDENCE	205	BEDROOM 2	152	CARPET OVER 3/4" ACOUSTICAL MAT	PAINTED GYP. BD. (5/8" AT EXT. WALLS & CEILINGS) - 1/2" AT INTERIOR WALLS	SEE REFLECTED CEILING PLAN	1X3 PINE	-
RESIDENCE	206	CLOS.	14	CARPET OVER 3/4" ACOUSTICAL MAT	PAINTED GYP. BD. (5/8" AT EXT. WALLS & CEILINGS) - 1/2" AT INTERIOR WALLS	SEE REFLECTED CEILING PLAN	1X3 PINE	-
			1441					
GARAGE	109	GARAGE	350	SEALED CONCRETE	PAINTED GYP. BD. (5/8" AT EXT. WALLS & CEILINGS) - 1/2" AT INTERIOR WALLS	SEE REFLECTED CEILING PLAN	1X3 PINE	-
GARAGE	207	GARAGE STORAGE	301	UNFINISHED OSB	PAINTED GYP. BD. (5/8" AT EXT. WALLS & CEILINGS) - 1/2" AT INTERIOR WALLS	SEE REFLECTED CEILING PLAN	1X3 PINE	-
			651					

5C/A101 ROOM FINISH SCHEDULE

TYPE	AREA	MATERIAL
2" EPS INSULATION - HORZ. EXTENSION	521	2" x 24" XPS RIGID INSULATION \n ALT BID: 3" x 24" \n WITH 2% SLOPE AWAY FROM BUILDING \n COVERED IN COURSE GRAVEL (NO FINES) \n COVERED WITH FILTER FABRIC
2" EPS INSULATION - UNDER SLAB	681	2" XPS RIGID INSULATION \n OVER 4" MIN. COMPACTED \n CRUSHED GRAVEL (NO FINES)
2" EPS INSULATION - UNDER SLAB - SLOPED	490	2" XPS RIGID INSULATION \n OVER 4" MIN. COMPACTED \n CRUSHED GRAVEL (NO FINES)
2" EPS INSULATION - VERTICAL - AT PERIMETER	489	GALV. SHEET METAL \n OVER 2" XPS RIGID INSULATION \n ALT BID: 3" XPS
GYP. CEILING	379	1/2" GYP. BD @ CEILING
GYP. CEILING AT ROOF	1021	R-49 BATT. INSULATION \n OVER VAPOR BARRIER \n OVER 5/8" GYP. BD.
GYP. CEILING w/ STUD	30	1/2" GYP. BD @ CEILING
TILE - 1	95	TILE - 1
TILE - 2	22	TILE - 2

5B/A101 QUANTITY TAKE-OFF - COVERINGS

TYPE	AREA	MATERIAL
CONCRETE PAVERS	318	LARGE FIELD-FORMED \n 4" CONCRETE PAVERS
CONCRETE SLAB	1386	4" CONCRETE SLAB (STAINED & SEALED) \n W/ 6"x6" WIRE MESH \n W/ RADIANT HEAT TUBS \n OVER 6 MIL VAPOR BARRIER
CORRUGATED METAL	2680	CORRUGATED GALV. ROOF \n WITH EXPOSED FASTENERS \n OVER 30LB FELT UNDERLAYMENT \n OVER 1/2" CDX (PAINTED AT EXTERIOR) \n CONT. VENT AT RIDGE
CORRUGATED METAL - BUTYL	94	CORRUGATED GALV. ROOF (BUTYL AT SEAMS) \n WITH EXPOSED FASTENERS \n OVER 30LB FELT UNDERLAYMENT \n 1/2" SLOPE
CORRUGATED METAL AT OVERHANGS	184	CORRUGATED GALV. ROOF \n WITH EXPOSED FASTENERS
FLOOR OSB	635	3/4" OSB
T1-11	389	5/8" T1-11 (ABOVE DINING/LIVING ROOM) \n 3/4" OSB AT OTHER AREAS

5B/A101 QUANTITY TAKE-OFF - SLABS

TYPE	DESCRIPTION	AREA
E-BAT-F	EXTERIOR - BATTEN BOARD SIDING (FIELD)	1802
E-BAT-U	EXTERIOR - BATTEN BOARD SIDING (UPPER)	684
E-CORR-D	EXTERIOR - CORRUGATED METAL - DARK	689
E-CORR-L	EXTERIOR - CORRUGATED METAL - LIGHT	302
I-2X4	INTERIOR - 2X4 - NOT LOAD BEARING	610
I-2X6	INTERIOR - 2X6 - NOT LOAD BEARING	126
I-2X6-LB	INTERIOR - 2X6 - LOAD BEARING	309

5A/A101 QUANTITY TAKE-OFF - WALLS

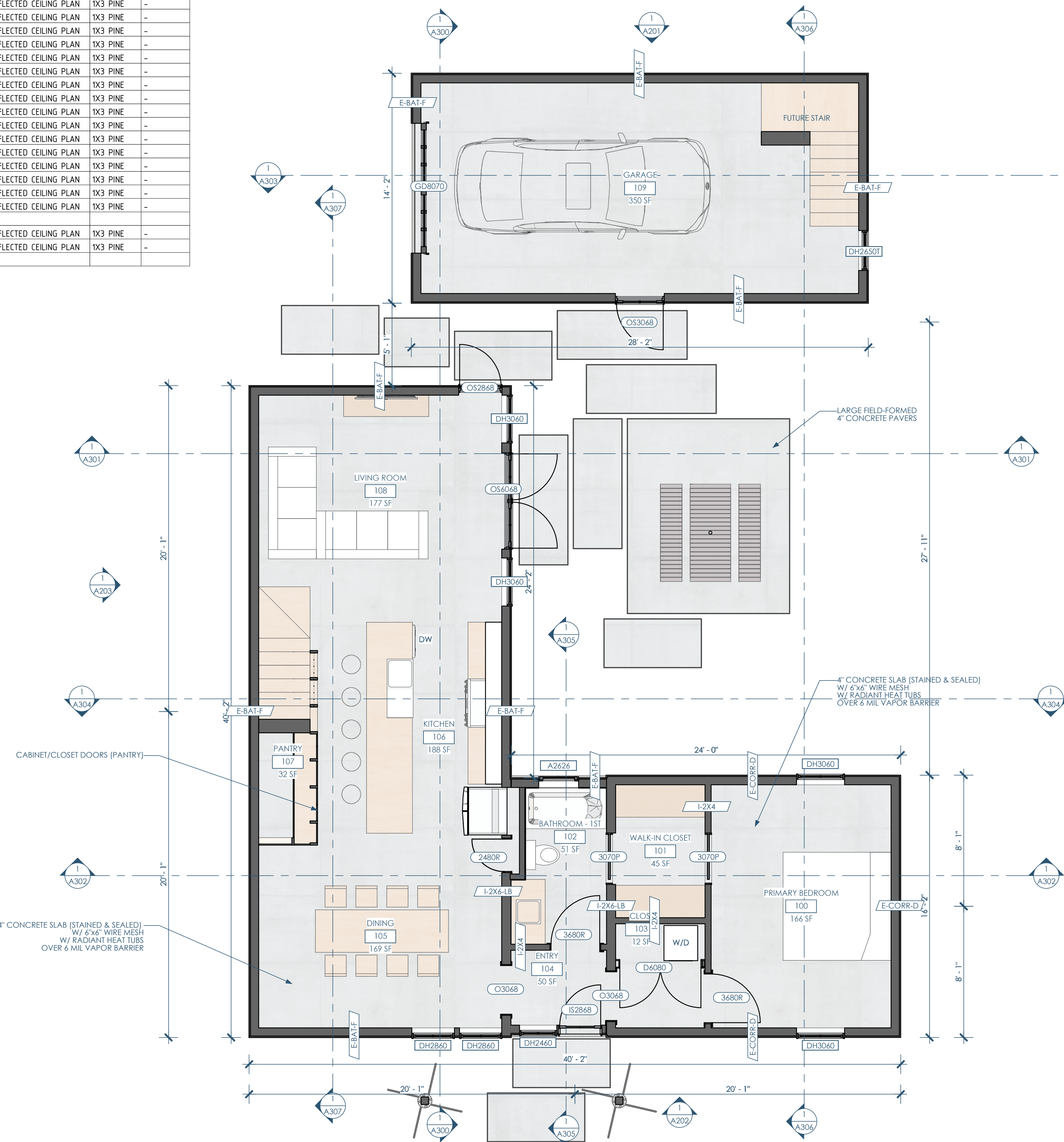
TYPE MARK	TYPE	COUNT
2480R	SINGLE SWING DOOR	1
3070P	POCKET DOOR	2
3680L	SINGLE SWING DOOR	2
3680R	SINGLE SWING DOOR	4
ATTIC	TRAPDOOR ATTIC ACCESS PANELS	1
D6080	DOUBLE SWING DOOR	1
GD8070	GARAGE DOOR - CARRIAGE HOUSE STYLE	1
IS2868	FRONT DOOR	1
O3068	OPENING - TRIM ONLY	2
OS2868	OUTSWING PATIO DOOR	1
OS3068	OUTSWING DOOR AT GARAGE	1
OS6068	OUTSWING PATIO DOUBLE DOOR	1
S7280	DOUBLE SWING DOOR	2

5A/A101 DOOR SCHEDULE - SIMPLE

TYPE MARK	TYPE	COUNT
A2626	AWING - 29-1/2" x 29-1/2"	5
A3030	AWING - 35-1/2" x 35-1/2"	5
DH2460	DOUBLE HUNG - 27-1/2" x 71-1/2"	1
DH2650T	DOUBLE HUNG - 29-1/2" x 59-1/2"	1
DH2860	DOUBLE HUNG - 31-1/2" x 71-1/2"	6
DH3060	DOUBLE HUNG - 35-1/2" x 71-1/2"	6

4A/A101 WINDOW SCHEDULE - SIMPLE

3A/A101 FLOOR PLAN - 1ST
1/4"=1'-0"



openingdesign
Architect: OpeningDesign
17 S Fairchild | FL 7
Madison, WI 53703
ryan@openingdesign.com | 773.425.6456

SCHULTZ CONSTRUCTION CO.
GC: J W Schultz Construction
N2941 Bander Rd
Fort Atkinson, WI 53589
jason@jwschultz.net | 608.295.6891

This project, like most OpeningDesign's projects, is open source. (Attribution-ShareAlike 4.0 International) CC-BY-SA 4.0 - freely available to any party for future use, assuming the terms such as Attribution and ShareAlike are honored.