

MARK	TYPE	MANUFACTURER	MODEL	DESCRIPTION	TYPE COMMENTS	URL
L1	CAN LIGHT	LITHONIA	LDN4	MATTE BLACK TRIM		https://trivul.com/59n5rty
L2	2X2 LED FLAT PANEL	LITHONIA	CPX 2X2 300LM 80 CRI 30K SWL MINI D			https://trivul.com/2yvvvau45
L3	PENDANT	HYPERLITE	HERO SERIES W/ 60 REFLECTOR	BLACK BODY, CLEAR REFLECTOR		https://trivul.com/2wvm386
L4	LINEAR LED	HYPERLITE	4FT VAPOR TIGHT LIGHT			https://trivul.com/59nccs2
L5	WALL SCONCE	RAB	VBR1000CB	BLACK		https://trivul.com/2896tme
L6	WALL SCONCE	STUFF BY ANDREW MEYER	PIPE LIGHT	BLACK		http://trivul.com/3daiaou6
L7	LINEAR LED	AGC LIGHTING	LH816			https://trivul.com/ymaurtv
L7a	24\"/>					

5A/A150 LIGHTING SCHEDULE

Date	Description
12/15/2025	PROGRESS SET

This project, like most OpeningDesign's projects, is open source. (Attribution:ShareAlike 4.0 International-CC BY-SA 4.0)-freely available to any party for future use, assuming the terms such as Attribution and ShareAlike are honored.



LAKE COUNTRY
CONSTRUCTION GROUP



openingdesign

Owner: Cool Car Guys
1600 Center Ave
Janesville, WI 53546
608.531.1600

GC: Lake Country Construction Group
161 Horizon Dr
Verona, WI 53593
608.845.1398

Architect: Opening Design
17 S Fairchild | FL 7
Madison, WI 53703
ryan@openingdesign.com | 773.425.6456

REFLECTED CEILING PLAN - 1ST FLOOR

COOL CAR GUYS

1600 CENTER AVE, JANESVILLE, WI 53546

A150

5

4

3

2

1

EXTERNAL	TYPE	DESCRIPTION	AREA	LENGTH	COUNT	1ST LAYER	2ND LAYER	3RD LAYER	4TH LAYER
-	C8Q2D	CONCRETE WALL (SIZE TBD)	12046	3400	7	CONCRETE WALL (SIZE TBD)	-	-	-
-	W4B2D	5/8 GYP - 2X4 WOOD - 5/8 GYP	18243	1905	18	5/8" GYP, BD OR CEMENT BACKERBOARD ON WET WALL	2X WOOD STUD W/ BATT INSULATION	5/8" GYP, BD OR CEMENT BACKERBOARD ON WET WALL	-
-	W4E2A	STAIR/BALCONY GUARDRAIL	1516	306	6	GM_Trim_Dark	GM_Trim_Dark	1/2" OSB (NO WOOD STAMPS) - SAND/PRIME/SEAL W/ CLEAR POLYURETHANE	-
-	W6B2D	5/8 GYP - 2X6 WOOD - 5/8 GYP	1050	90	2	5/8" GYP, BD OR CEMENT BACKERBOARD ON WET WALL	2X WOOD STUD W/ BATT INSULATION	5/8" GYP, BD OR CEMENT BACKERBOARD ON WET WALL	-
YES	E6S2D	EXTERIOR - LSL STUDS	9201	749	3	BUILDING WRAP OVER 1/2" CDX SHEATHING	ENGINEERED LUMBER (SIZE/SPACING TBD)	6 MIL VAPOR BARRIER	1/2" CDX (BFT AFF) W/ 1/2" GYP, BD ABOVE
YES	E6T2D	EXTERIOR - LSL STUDS - W/ FINISHED OSB	4550	200	2	BUILDING WRAP OVER 1/2" CDX SHEATHING	ENGINEERED LUMBER (SIZE/SPACING TBD)	1/2" OSB (NO WOOD STAMPS) - SAND/PRIME/SEAL W/ CLEAR POLYURETHANE	-
YES	W6S2D	EXTERIOR - WOOD STUDS	11373	475	4	BUILDING WRAP OVER 1/2" CDX SHEATHING	2X WOOD STUD W/ BATT INSULATION	5/8" GYP, BD w/ VAPOR BARRIER behind	-

3/A600 QUANTITY TAKE-OFF - WALLS

TYPE MARK	TYPE	WIDTH	HEIGHT	TYPE COMMENTS	COUNT
SF3636	ALUM. STOREFRONT WINDOW W/ INSULATED GLAZING	3'-0"	3'-0"	MATCH RED TRIM	13
SF3636.1	SINGLE GLAZED HOLLOW METAL WINDOW	3'-0"	3'-0"	FRAME: PT-2	3
SF4644	ALUM. STOREFRONT WINDOW W/ INSULATED GLAZING	5'-4"	5'-4"	MATCH RED TRIM	1
SF4644.4	ALUM. STOREFRONT WINDOW W/ INSULATED GLAZING	5'-4"	5'-4"	[4] EQUAL LIGHTS - MATCH RED TRIM	2
SF_VARIES	ALUM. STOREFRONT WINDOW W/ INSULATED GLAZING	-	-	SEE ELEVATIONS FOR SIZES	4

2/A600 WINDOW SCHEDULE - SIMPLE

TYPE MARK	TYPE	WIDTH	HEIGHT	TYPE COMMENTS
3680L	HOLLOW METAL DOOR W/ SOLID CORE WOOD PANEL	3'-0"	6'-8"	PANEL: PT-2 - JAMB: PT-3 (BOTH SEMI-GLOSS)
3680R	HOLLOW METAL DOOR W/ SOLID CORE WOOD PANEL	3'-0"	6'-8"	PANEL: PT-2 - JAMB: PT-3 (BOTH SEMI-GLOSS)
3684R	HOLLOW METAL DOOR/JAMB	3'-0"	7'-0"	EXTERIOR GRADE - JAMB/DOOR: PT-4
G3680L	HOLLOW METAL DOOR - METAL PANEL W/ GLASS INSERT	3'-0"	6'-8"	PANEL: PT-2 - JAMB: PT-3 (BOTH SEMI-GLOSS) W/ TEMPERED GLAZING
G3680R	HOLLOW METAL DOOR - METAL PANEL W/ GLASS INSERT	3'-0"	7'-0"	PANEL: PT-2 - JAMB: PT-3 (BOTH SEMI-GLOSS) W/ TEMPERED GLAZING
G3684R	ALUM. STOREFRONT DOOR	3'-0"	7'-0"	MATCH RED TRIM (W/ TEMPERED GLAZING)
G4284R	ALUM. STOREFRONT DOOR	3'-6"	7'-0"	MATCH RED TRIM (W/ TEMPERED GLAZING)
GD120120	INSULATED GARAGE DOOR	10'-0"	10'-0"	EXTERIOR GRADE - JAMB/DOOR: PT-4
GGD120120	INSULATED GLASS GARAGE DOOR	10'-0"	10'-0"	MATCH RED TRIM (W/ TEMPERED GLAZING)

1/A600 DOOR SCHEDULE - SIMPLE

TYPE	AREA	COUNT	1ST LAYER	2ND LAYER	3RD LAYER	4TH LAYER
ASPHALT PAVEMENT	13555	3	ASPHALT PAVEMENT	-	-	-
COMPACTED BASE - INSIDE	6910	3	6" COMPACTED CRUSHED STONE	-	-	-
COMPACTED BASE - OUTSIDE	298	1	6" COMPACTED CRUSHED STONE	-	-	-
CONCRETE SLAB AT FENCED IN AREA	337	1	5' CONCRETE SLAB ON GRADE W/646-W1.4WV1.4-WVF (SLOPE (2%) AWAY FROM BUILDING)	-	-	-
CONCRETE SLAB - INSIDE - FLAT	864	1	5' CONCRETE SLAB ON GRADE W/646-W1.4WV1.4-WVF OVER VAPOR BARRIER	-	-	-
CONCRETE SLAB - INSIDE - SLOPED TO DRAIN	4317	2	5' CONCRETE SLAB ON GRADE W/646-W1.4WV1.4-WVF OVER VAPOR BARRIER	-	-	-
SIDEWALK	703	1	CONCRETE PAVING	-	-	-
TJb - ABOVE DROP OFF	304	1	5/8" GYP, BD @ CEILING (SEMI-GLOSS EPOXY PAINT)	TJ1 (SIZE/SPACING TBD) (W/ FULL CAVITY OF BATT, INSULATION)	3/4" CDX SHEATHING	CARPET OR LVL
TJb - ABOVE OFFICE	657	1	5/8" GYP, BD @ CEILING (PT-1)	TJ1 (SIZE/SPACING TBD) (W/ FULL CAVITY OF BATT, INSULATION)	3/4" CDX SHEATHING	CARPET OR LVL

4/A600 QUANTITY TAKE-OFF - SLABS



Owner: Cool Car Guys
1600 Center Ave
Janesville, WI 53546
608.531.1600



GC: Lake Country Construction Group
161 Horizon Dr
Verona, WI 53593
608.845.1398



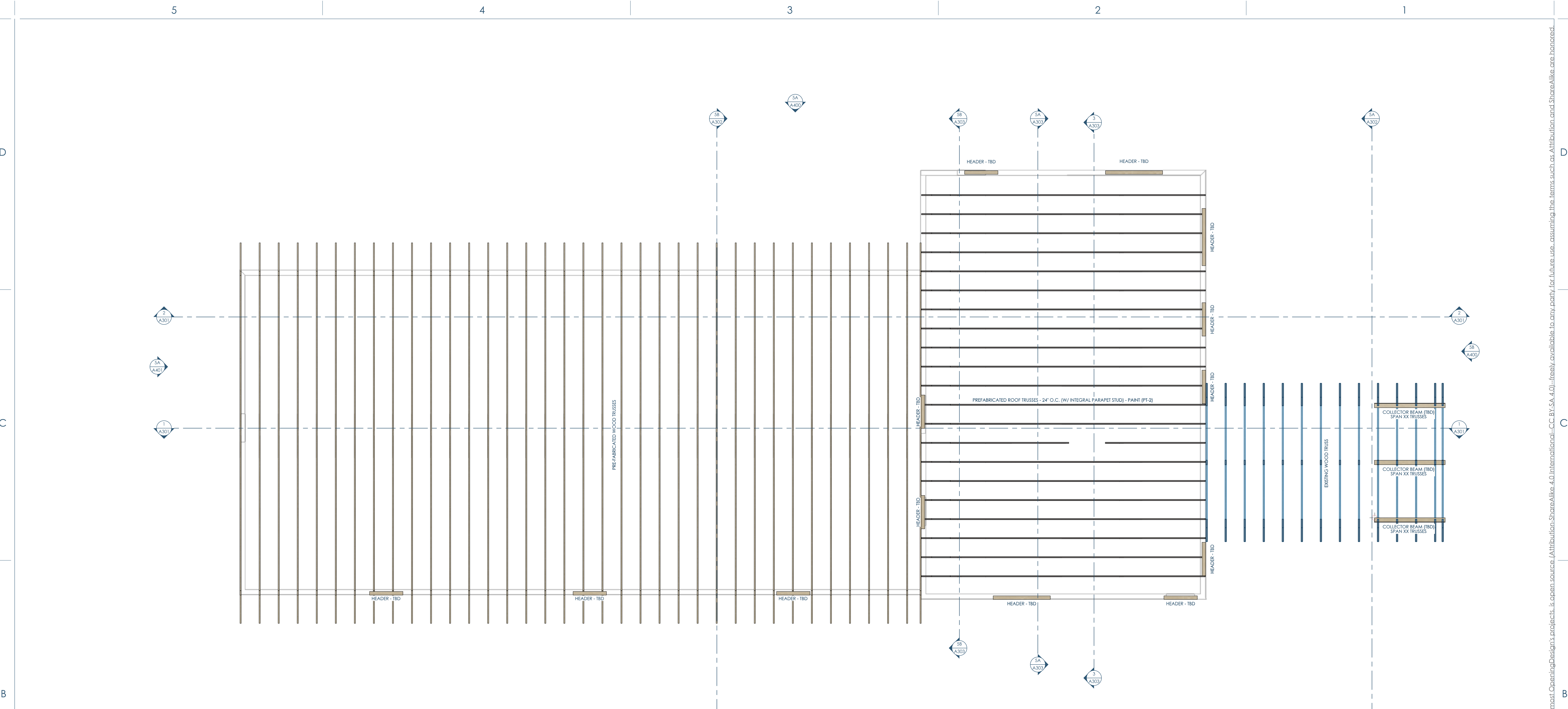
Architect: Opening Design
17 S Fairchild | FL 7
Madison, WI 53703
ryan@openingdesign.com | 773.425.6456

SCHEDULES
COOL CAR GUYS

1600 CENTER AVE, JANESVILLE, WI 53546

A600

This project, like most Opening Design's projects, is open source (Attribution-ShareAlike 4.0 International - CC BY-SA 4.0) - freely available to any party for future use, assuming the terms such as Attribution and ShareAlike are honored.



2/S103 RCP - FRAMING - ROOF
1/4"=1'-0"

Date	Description
12/15/2025	PROGRESS SET

This project, like most Opening Design's projects, is open source. (Attribution: ShareAlike 4.0 International - CC BY-SA 4.0) - freely available to any party for future use, assuming the terms such as Attribution and ShareAlike are honored.