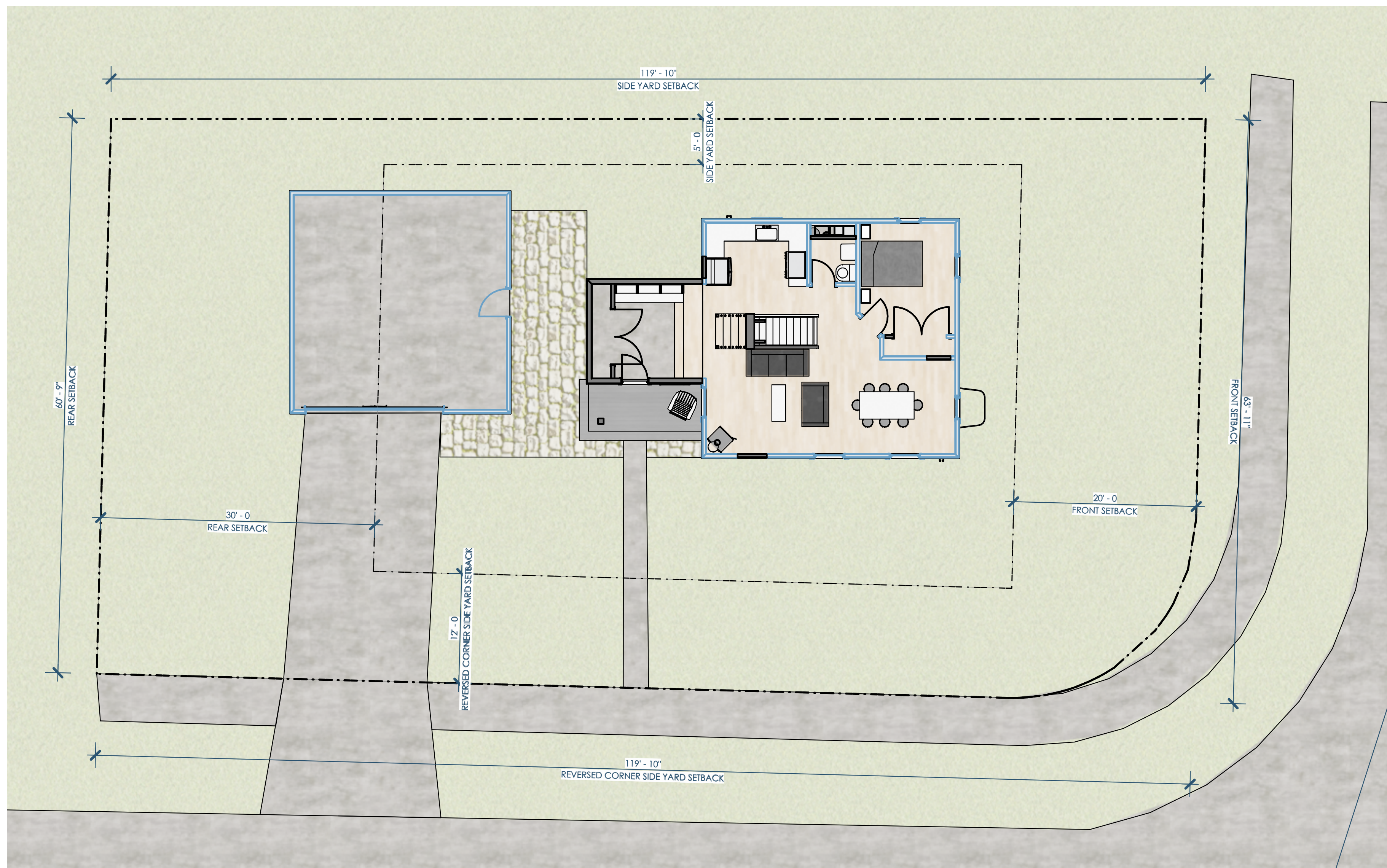
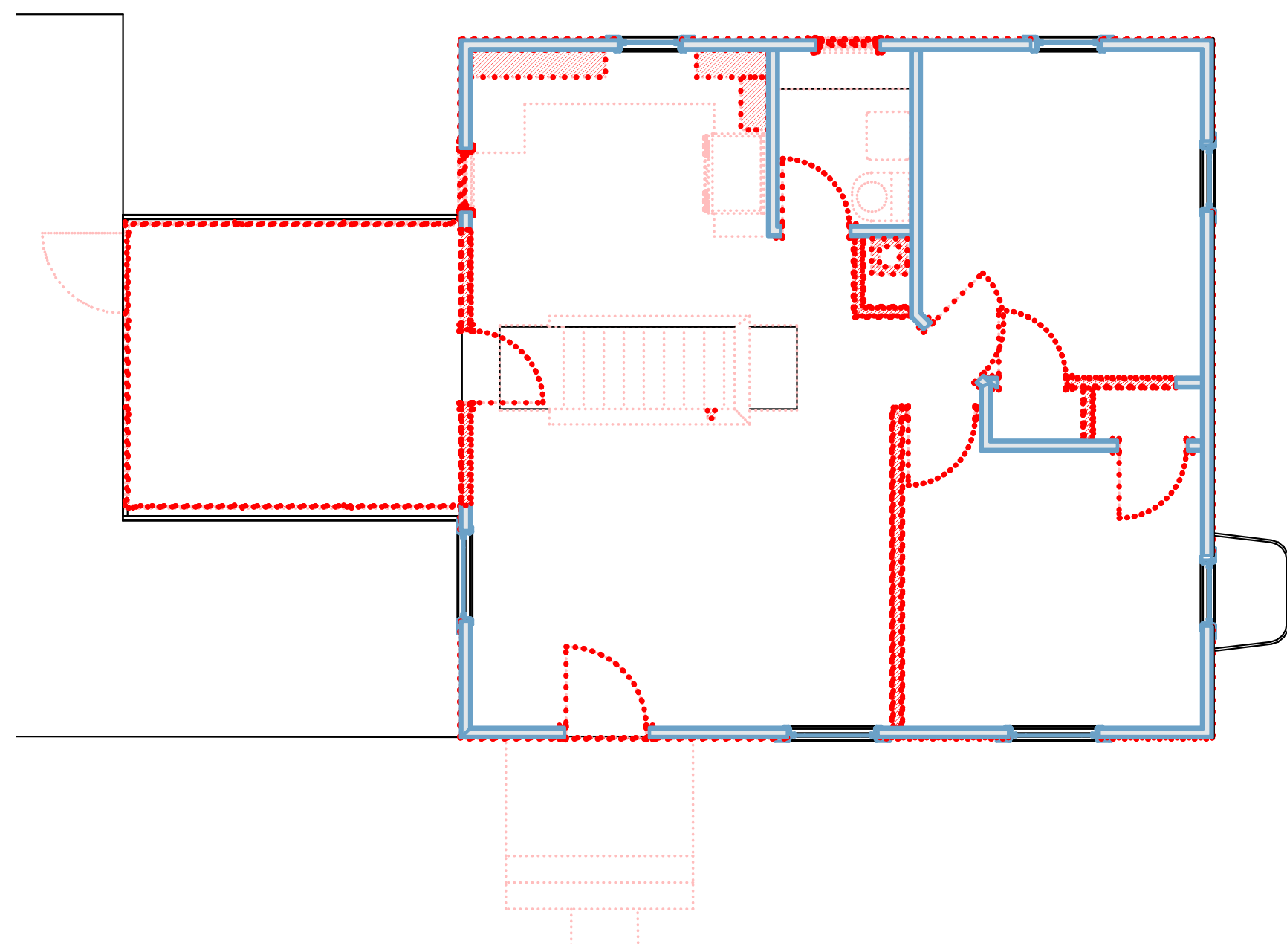


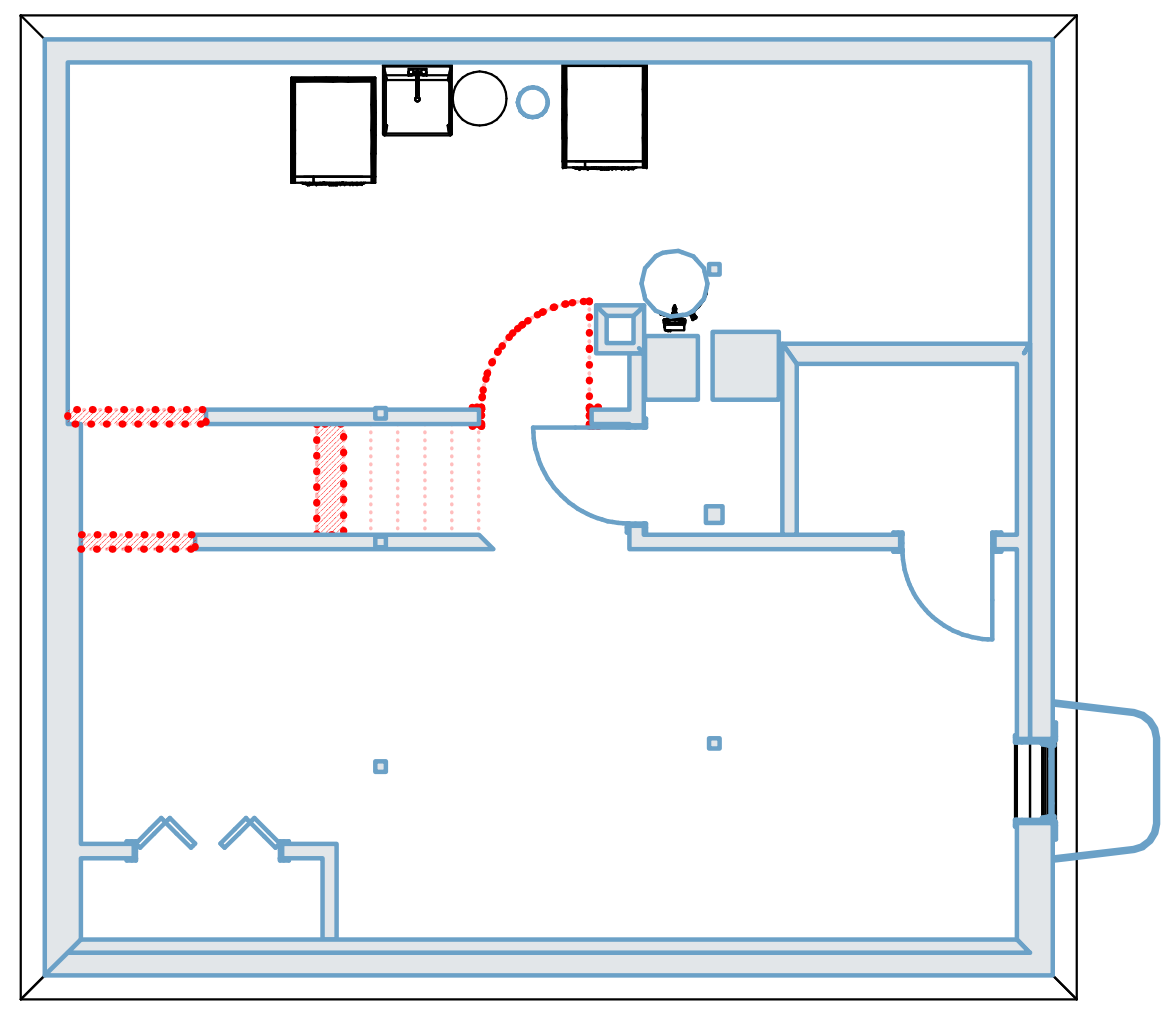
# CLOVER LANE RESIDENCE



5B/A000 SITE PLAN  
1/8"=1'-0"



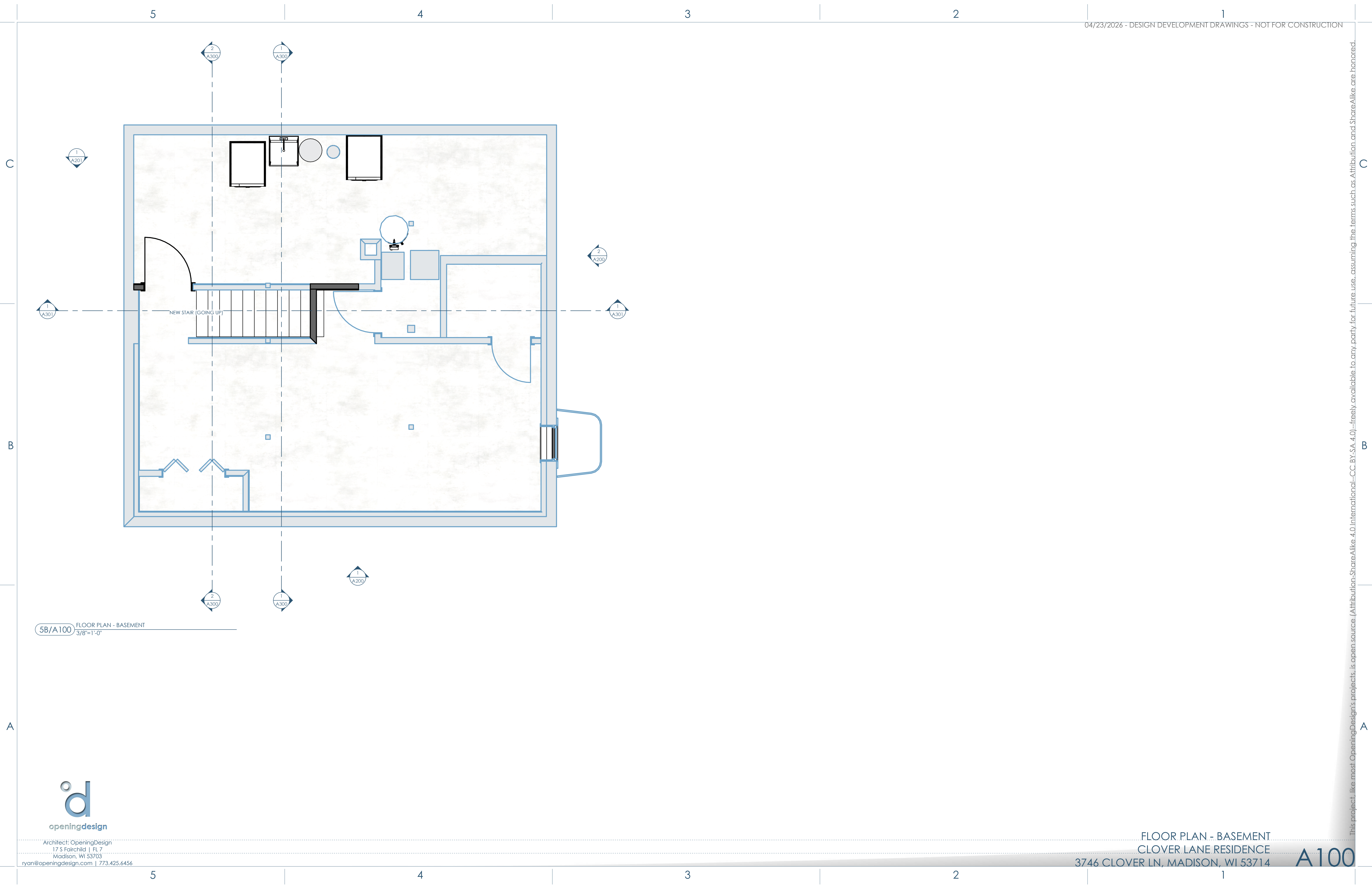
2/A000 DEMOLITION PLAN - 1ST FLOOR  
3/16"=1'-0"



3/A000 DEMOLITION PLAN - BASEMENT  
3/16"=1'-0"



This project, like most OpeningDesign's projects, is open source. (Attribution-ShareAlike 4.0 International=CC-BY-SA 4.0)---freely available to any party for future use, assuming the terms such as Attribution and ShareAlike are honored.



5B/A100 FLOOR PLAN - BASEMENT  
3/8"=1'-0"

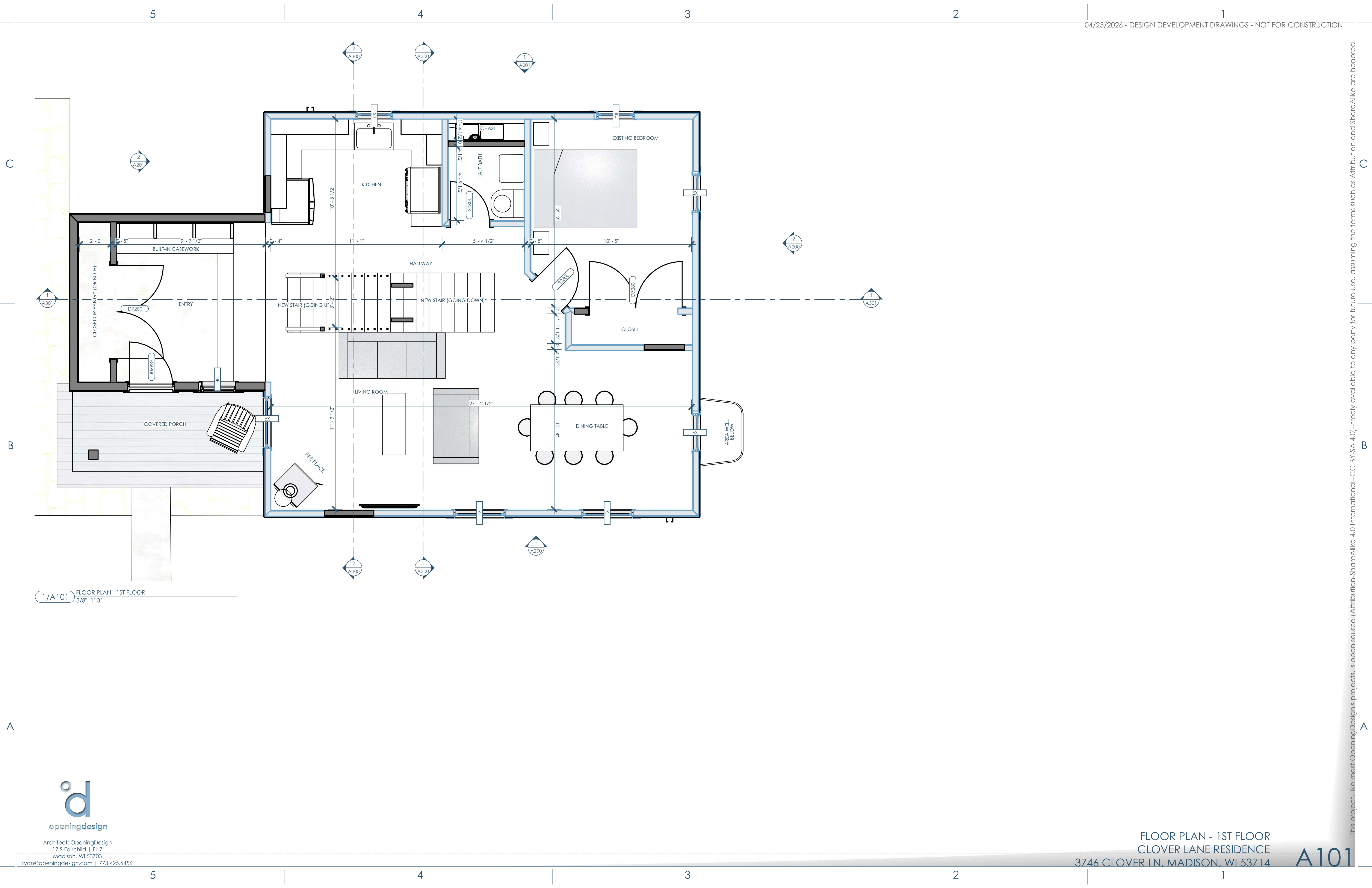


Architect: OpeningDesign  
 17 S Fairchild | FL 7  
 Madison, WI 53703  
 ryan@openingdesign.com | 773.425.6456

FLOOR PLAN - BASEMENT  
 CLOVER LANE RESIDENCE  
 3746 CLOVER LN, MADISON, WI 53714

A100

This project, like most OpeningDesign's projects, is open source (Attribution-ShareAlike 4.0 International=CC-BY-SA 4.0)=freely available to any party for future use, assuming the terms such as Attribution and ShareAlike are honored.



1/A101 FLOOR PLAN - 1ST FLOOR  
3/8"=1'-0"

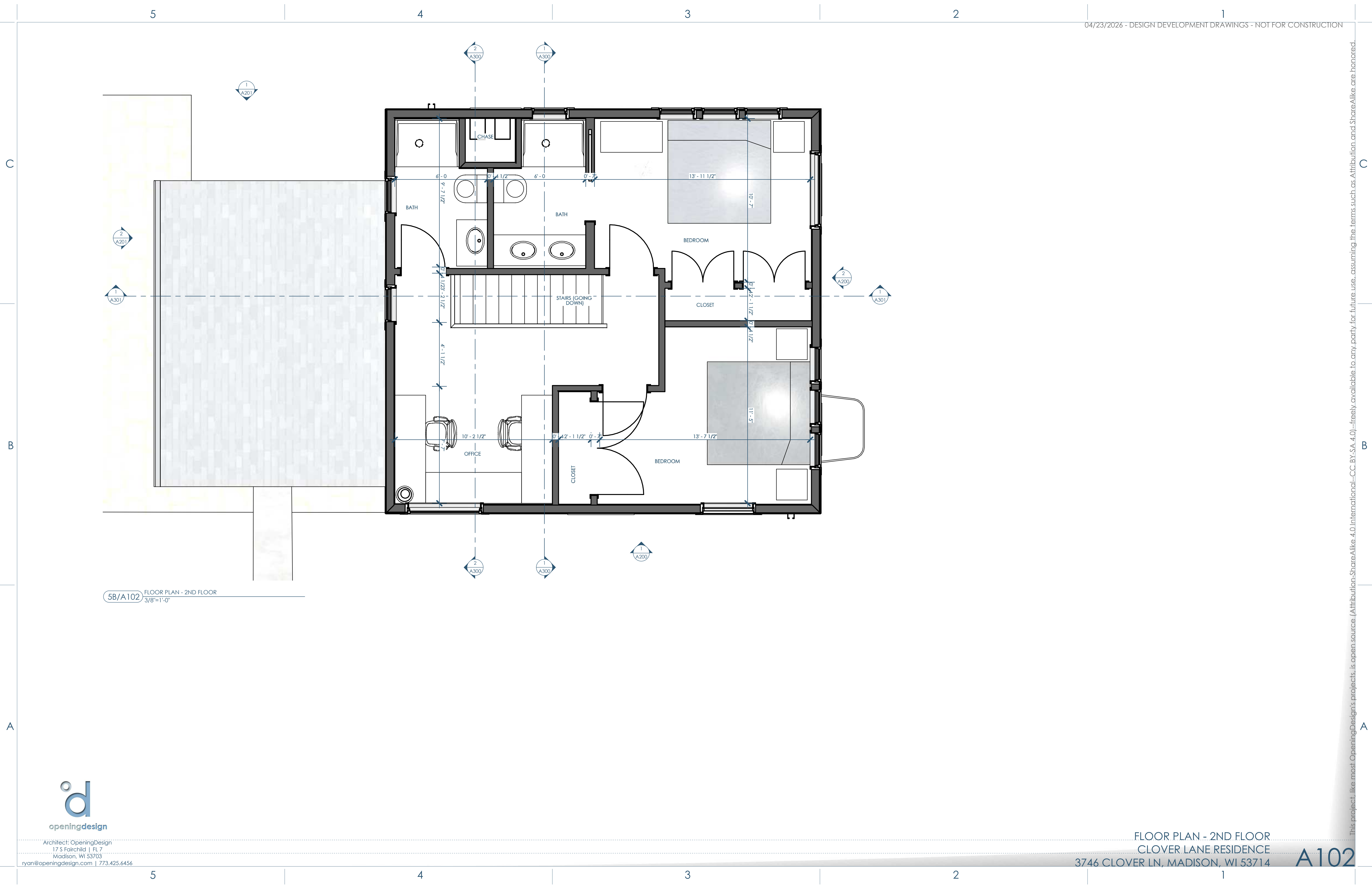


Architect: OpeningDesign  
 17 S Fairchild | FL 7  
 Madison, WI 53703  
 ryan@openingdesign.com | 773.425.6456

FLOOR PLAN - 1ST FLOOR  
 CLOVER LANE RESIDENCE  
 3746 CLOVER LN, MADISON, WI 53714

A101

This project, like most OpeningDesign's projects, is open source (Attribution-ShareAlike 4.0 International=CC-BY-SA 4.0)=freely available to any party for future use, assuming the terms such as Attribution and ShareAlike are honored.



5B/A102 FLOOR PLAN - 2ND FLOOR  
3/8"=1'-0"



Architect: OpeningDesign  
 17 S Fairchild | FL 7  
 Madison, WI 53703  
 ryan@openingdesign.com | 773.425.6456

FLOOR PLAN - 2ND FLOOR  
 CLOVER LANE RESIDENCE  
 3746 CLOVER LN, MADISON, WI 53714

A102

This project, like most OpeningDesign's projects, is open source (Attribution-ShareAlike 4.0 International=CC-BY-SA 4.0)---freely available to any party for future use, assuming the terms such as Attribution and ShareAlike are honored.

5

4

3

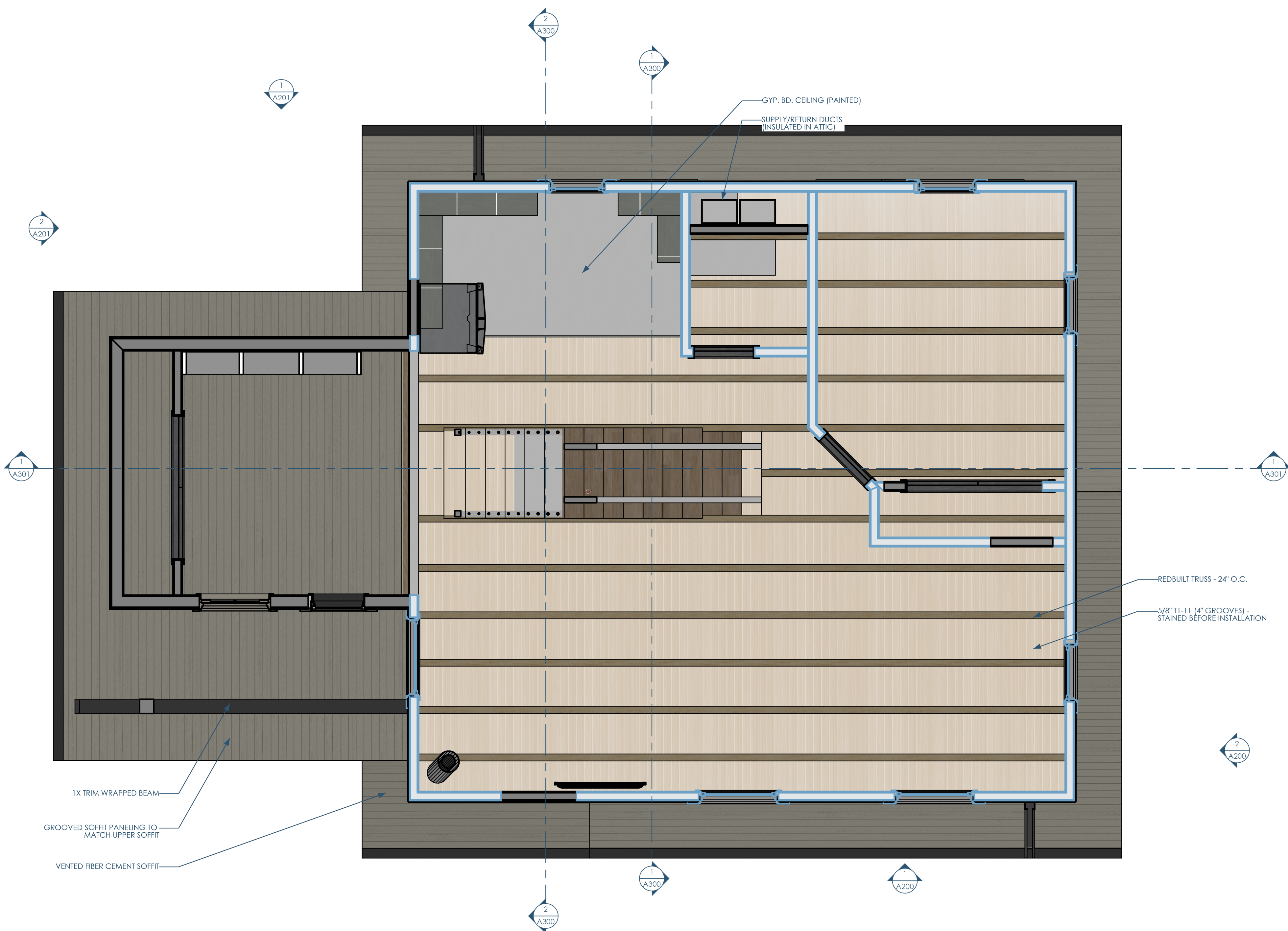
2

1

C

B

A



GYP. BD. CEILING (PAINTED)  
 SUPPLY/RETURN DUCTS  
 (INSULATED IN ATTIC)

REDBUILT TRUSS - 24\"/>
 5/8\"/>

1X TRIM WRAPPED BEAM  
 GROOVED SOFFIT PANELING TO  
 MATCH UPPER SOFFIT  
 VENTED FIBER CEMENT SOFFIT

1/A150 RCP - 1ST FLOOR  
 3/8\"/>

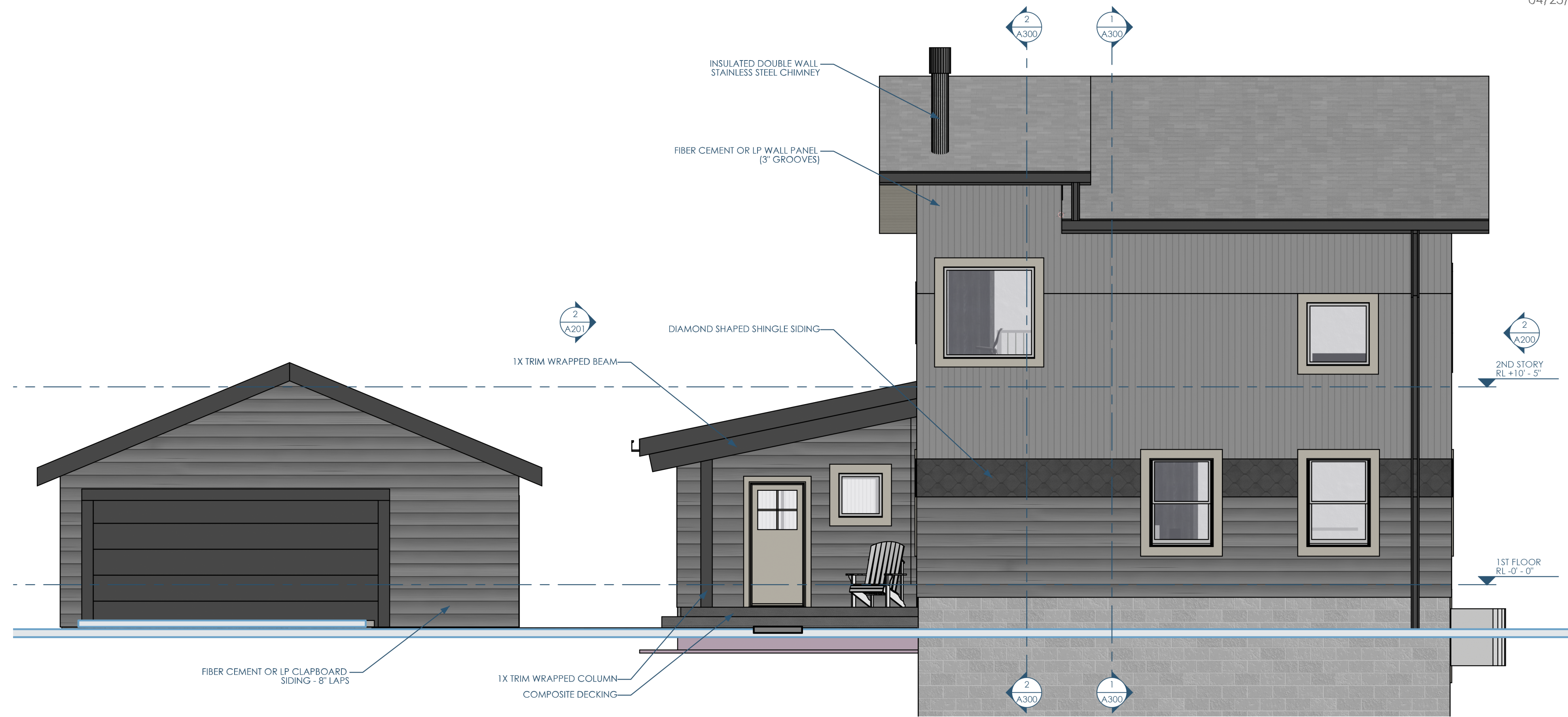


Architect: OpeningDesign  
 17 S Fairchild | FL 7  
 Madison, WI 53703  
 ryan@openingdesign.com | 773.425.6456

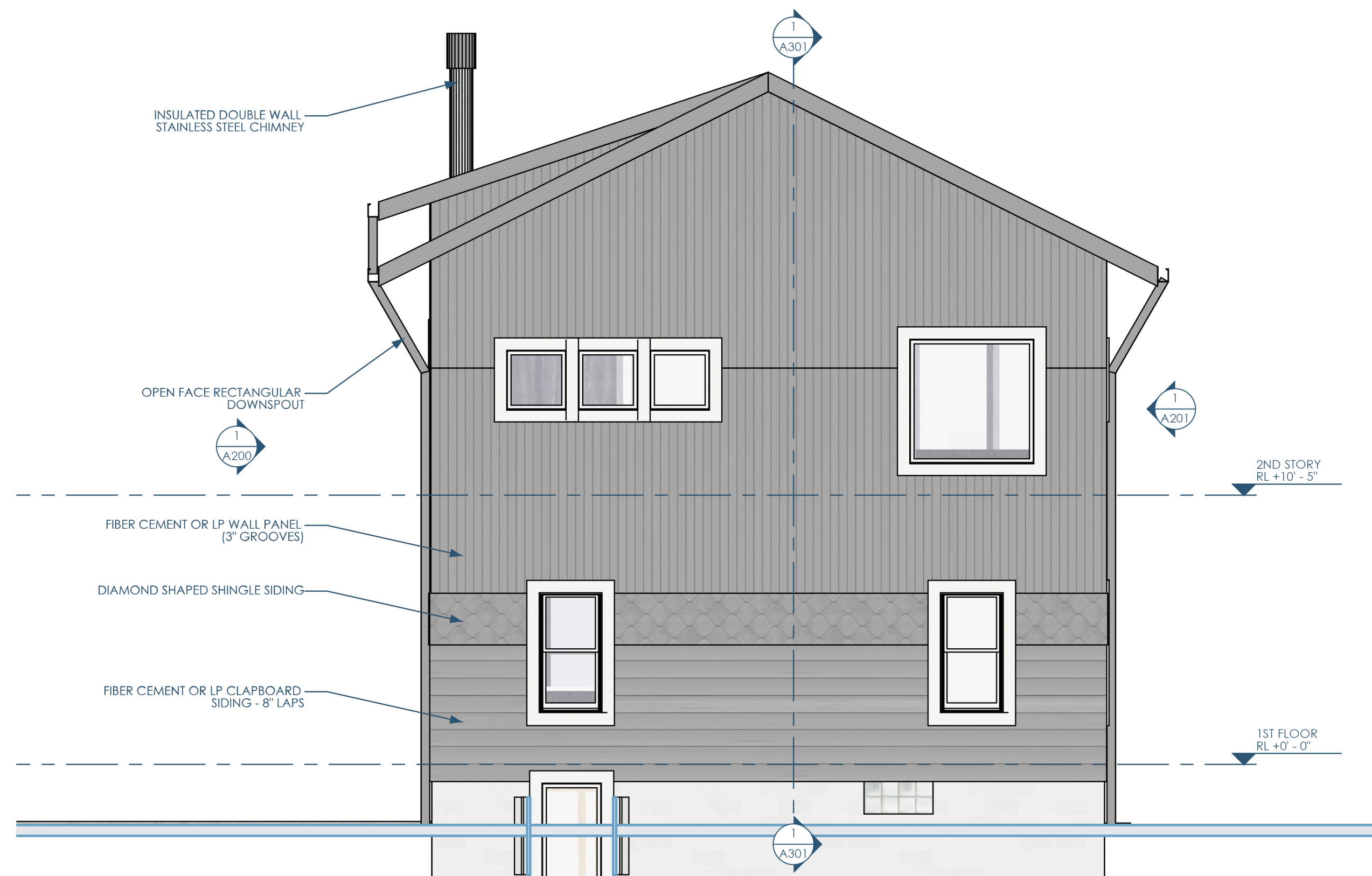
RCP - 1ST FLOOR  
 CLOVER LANE RESIDENCE  
 3746 CLOVER LN, MADISON, WI 53714

A150

This project, like most OpeningDesign's projects, is open source (Attribution-ShareAlike 4.0 International - CC BY-SA 4.0) - freely available to any party for future use, assuming the terms such as Attribution and ShareAlike are honored.



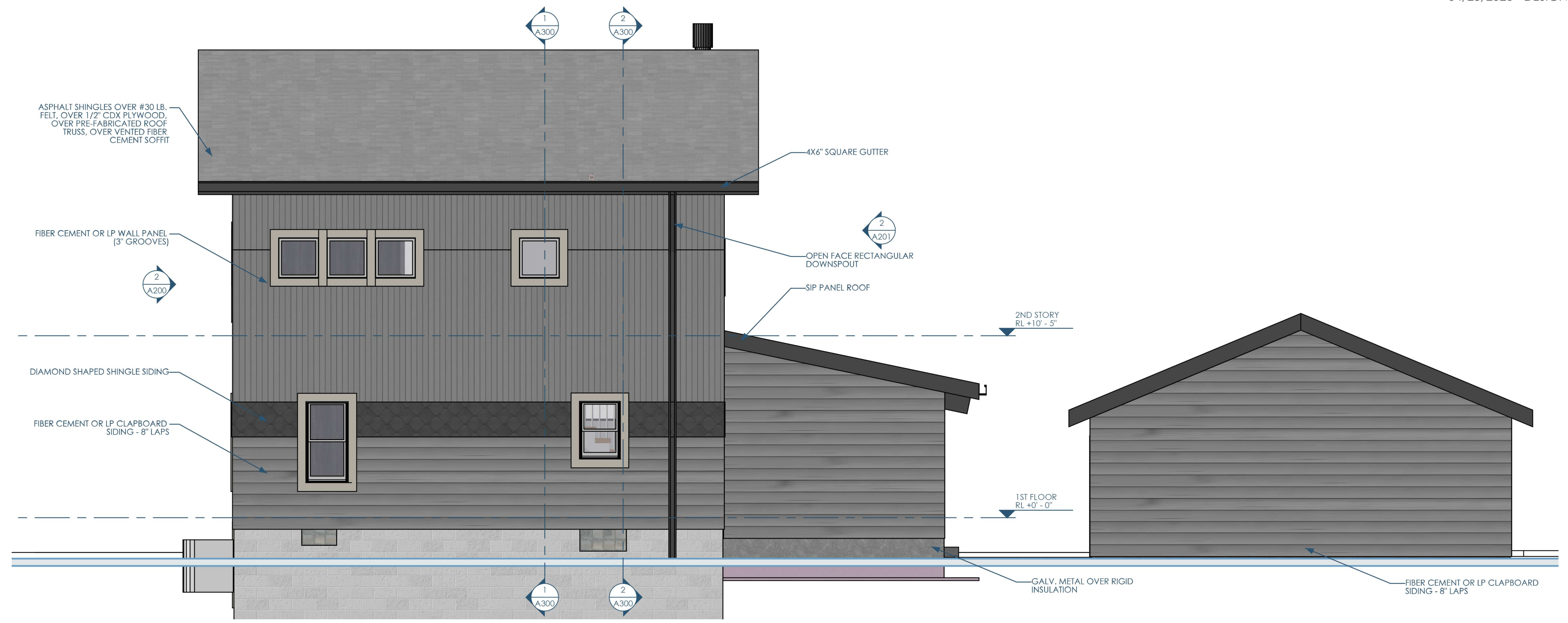
1/A200 ELEVATION - WEST  
1/4"=1'-0"



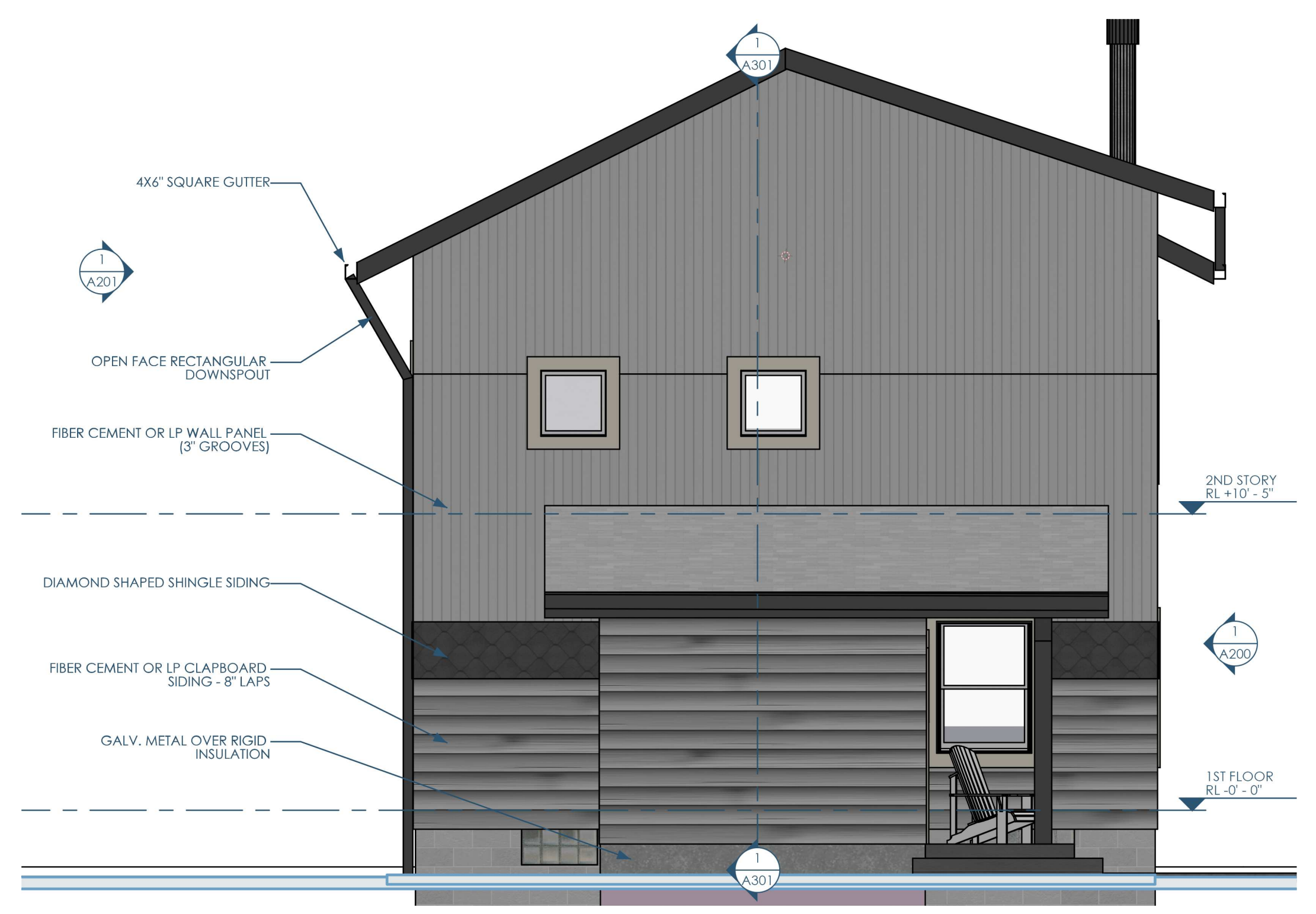
2/A200 ELEVATION - SOUTH  
1/4"=1'-0"



This project, like most OpeningDesign's projects, is open source (Attribution-ShareAlike 4.0 International=CC-BY-SA 4.0) - freely available to any party for future use, assuming the terms such as Attribution and ShareAlike are honored.



1/A201 ELEVATION - EAST  
1/4"=1'-0"



2/A201 ELEVATION - NORTH  
1/4"=1'-0"



Architect: OpeningDesign  
17 S Fairchild | FL 7  
Madison, WI 53703  
ryan@openingdesign.com | 773.425.6456

This project, like most OpeningDesign's projects, is open source (Attribution-ShareAlike 4.0 International=CC-BY-SA 4.0) - freely available to any party for future use, assuming the terms such as Attribution and ShareAlike are honored.

5

4

3

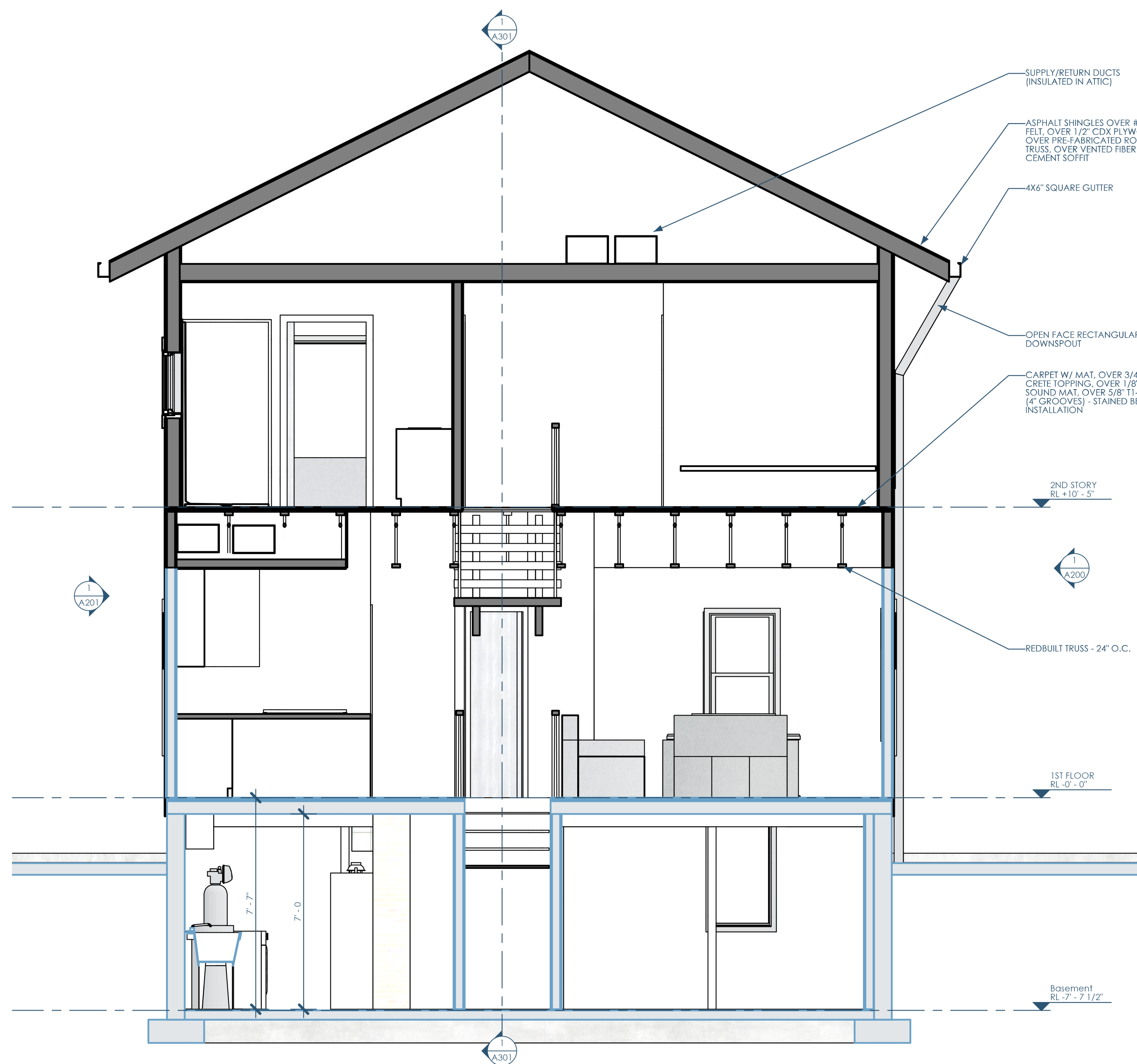
2

1

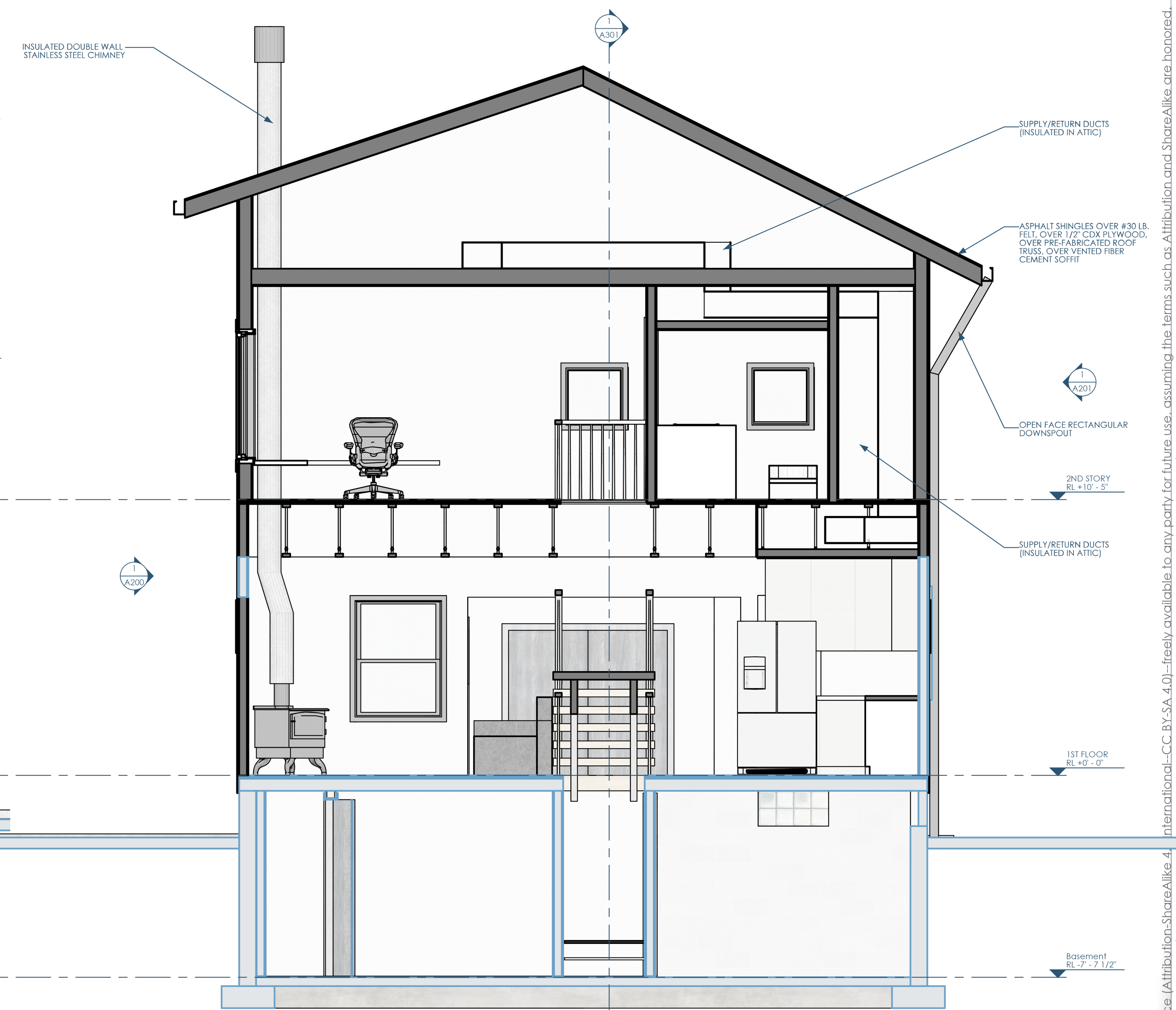
C

B

A



1/A300 SECTION E, W - LOOKING SOUTH  
3/8"=1'-0"



2/A300 SECTION E, W - LOOKING NORTH  
3/8"=1'-0"



Architect: OpeningDesign  
17 S Fairchild | FL 7  
Madison, WI 53703  
ryan@openingdesign.com | 773.425.6456

SECTION  
CLOVER LANE RESIDENCE  
3746 CLOVER LN, MADISON, WI 53714

A300

5

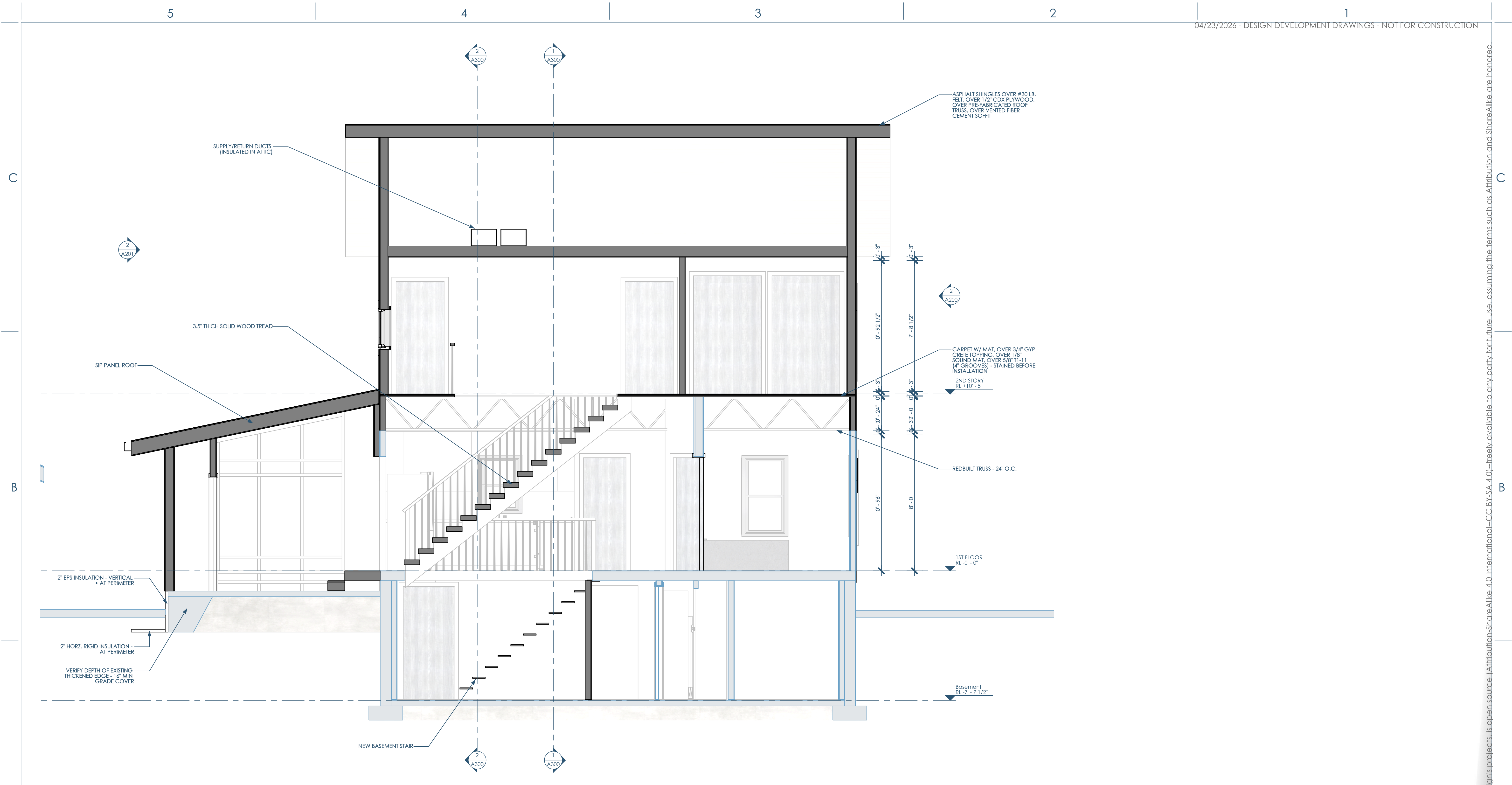
4

3

2

1

This project, like most OpeningDesign's projects, is open source. (Attribution-ShareAlike 4. International-CC BY-SA 4.0) - freely available to any party for future use, assuming the terms such as Attribution and ShareAlike are honored.



1/A301 SECTION N-S - LOOKING EAST - stair  
3/8"=1'-0"



Architect: Opening Design  
17 S Fairchild | FL 7  
Madison, WI 53703  
ryan@openingdesign.com | 773.425.6456

SECTION  
CLOVER LANE RESIDENCE  
3746 CLOVER LN, MADISON, WI 53714

A301

This project, like most Opening Design's projects, is open source. (Attribution: ShareAlike 4.0 International - CC BY-SA 4.0) - freely available to any party for future use, assuming the terms such as Attribution and ShareAlike are honored.



1/A900 PERSPECTIVE 1



2/A900 PERSPECTIVE 2



3/A900 PERSPECTIVE 3



4/A900 PERSPECTIVE 4



5/A900 PERSPECTIVE 6



6/A900 PERSPECTIVE 5



openingdesign  
Architect: OpeningDesign  
17 S Fairchild | FL 7  
Madison, WI 53703  
ryan@openingdesign.com | 773.425.6456

RENDERINGS  
CLOVER LANE RESIDENCE  
3746 CLOVER LN, MADISON, WI 53714

A900

This project, like most OpeningDesign's projects, is open source (Attribution-ShareAlike 4.0 International-CC-BY-SA 4.0)-freely available to any party for future use, assuming the terms such as Attribution and ShareAlike are honored.