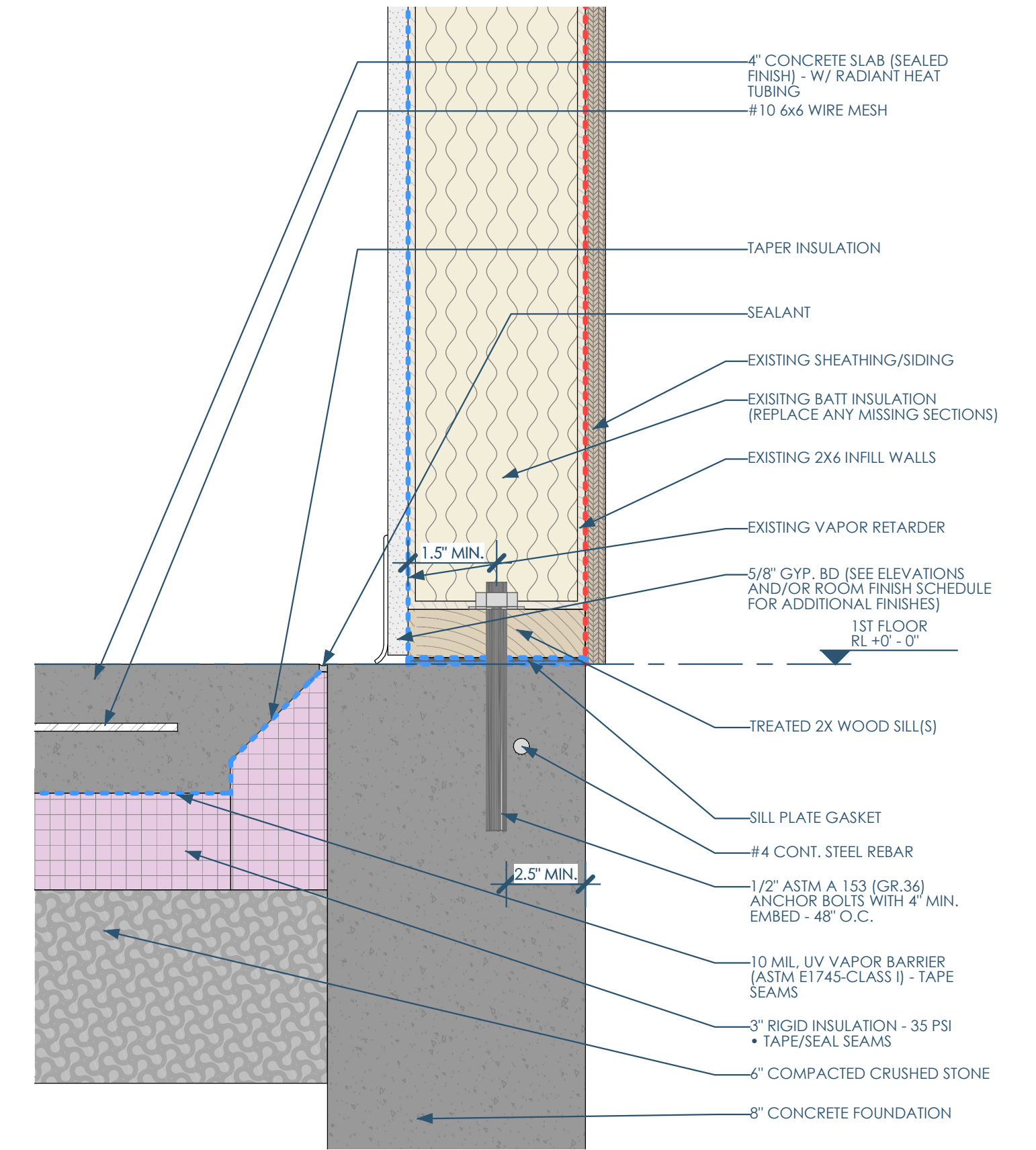
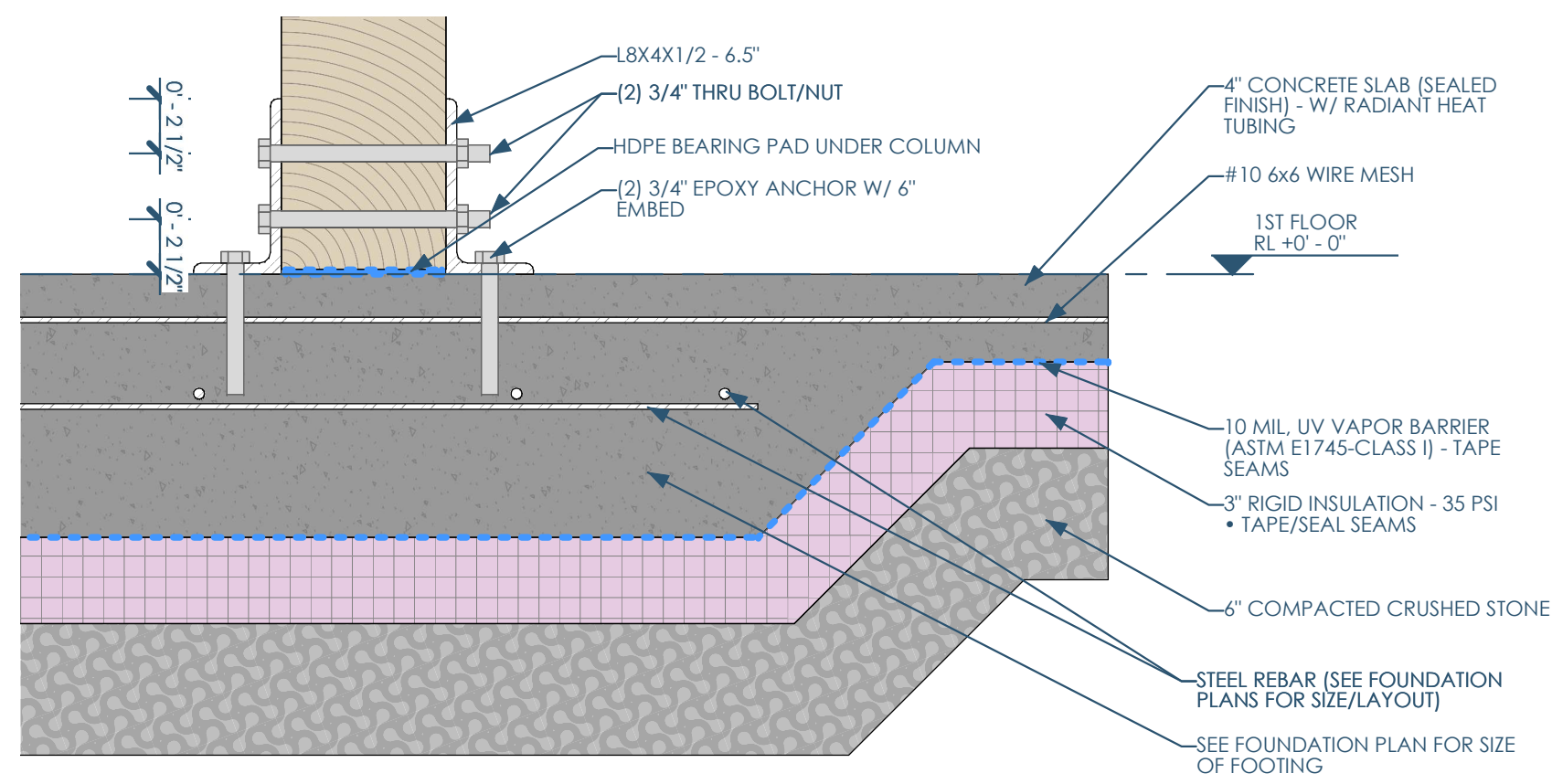


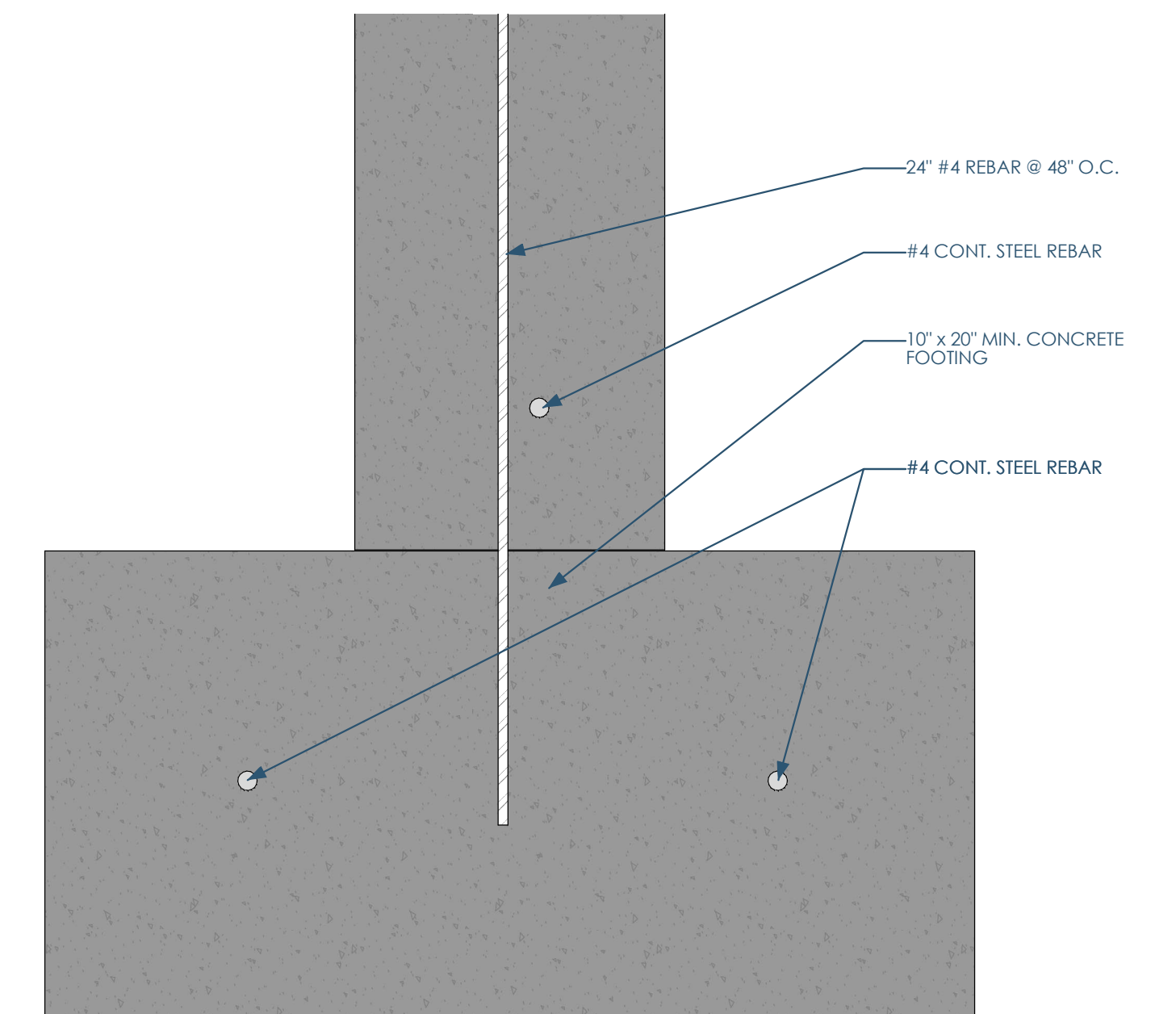
5C/S500 ANCHORAGE AT SILL AND TIMBER COLUMN
3/4\"=1'-0\"



2B/S500 DETAIL - SLAB AND FROST WALL
3\"=1'-0\"



5A/S500 DETAIL - INTERIOR COLUMN BASE
1-1/2\"=1'-0\"



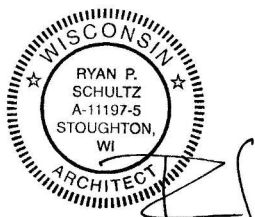
2A/S500 DETAIL - FOOTING
3\"=1'-0\"



Owner: Kenlyn/Marquis German Shepherd Dogs
11714 N Eastman Rd
Edgerton, WI 53534-9051
Kentboylesgsd@aol.com | 608.884.8355

Structural: Ennovation
PO Box 148
Orfordville, WI 53576
kfrey@ennovationbuilt.com | 608.212.6998

Architect: Opening Design
17 S Fairchild | FL 7
Madison, WI 53703
ryan@openingdesign.com | 773.425.6456



DETAILS
BARN RELOCATION

389 E HEMENWAY LANE - EDGERTON, WI 53534

S500

This project, like most Opening Design's projects, is open source (Attribution-ShareAlike 4.0 International=CC-BY-SA 4.0)=freely available to any party for future use, assuming the terms such as Attribution and ShareAlike are honored.